

## Home report

**1244 Foxborough Private, Rothwell Heights - Beacon Hill North,  
Beacon Heights, Gloucester, Ontario, Canada, K1J 1E2**

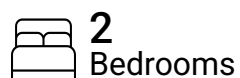


**Total Area: 1769 sq. ft**

Below Ground: 602 sq. ft, Floor 2: 1167 sq. ft

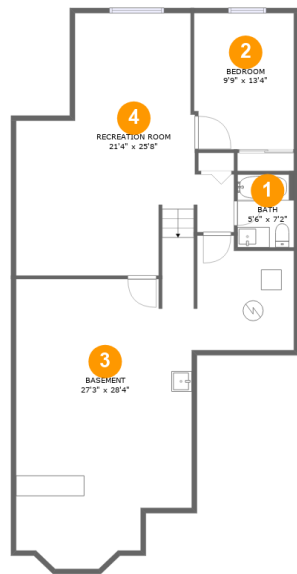
Excluded: Basement 564 sq. ft, Walls: 161 sq. ft

## Property summary



Home report

1244 Foxborough Private, Rothwell Heights - Beacon Hill North,  
Beacon Heights, Gloucester, Ontario, Canada, K1J 1E2



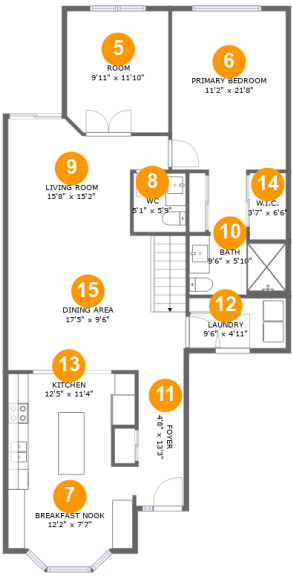
Room dimensions

Floor 1 Below ground Total:602sqft    Excluded: 564sqft

#		Max Dimensions	sqft	Included
1	Bath	5'6" x 7'2"	40 sq. ft	Yes
2	Bedroom	9'9" x 13'4"	129 sq. ft	Yes
3	Basement	27'3" x 28'4"	561 sq. ft	No
4	Recreation Room	21'4" x 25'8"	391 sq. ft	Yes

Home report

1244 Foxborough Private, Rothwell Heights - Beacon Hill North,  
Beacon Heights, Gloucester, Ontario, Canada, K1J 1E2



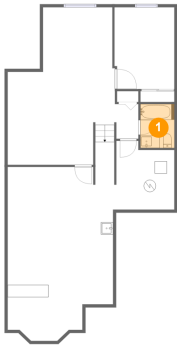
Room dimensions

Floor 2 Total:1167sqft   Excluded: 0sqft

#		Max Dimensions	sqft	Included
5	Room	9'11" x 11'10"	117 sq. ft	Yes
6	Primary Bedroom	11'2" x 21'8"	196 sq. ft	Yes
7	Breakfast Nook	12'2" x 7'7"	82 sq. ft	Yes
8	WC	5'1" x 5'9"	30 sq. ft	Yes
9	Living Room	15'8" x 15'2"	205 sq. ft	Yes
10	Bath	9'6" x 5'10"	52 sq. ft	Yes
11	Foyer	4'8" x 13'3"	60 sq. ft	Yes
12	Laundry	9'6" x 4'11"	38 sq. ft	Yes
13	Kitchen	12'5" x 11'4"	137 sq. ft	Yes
14	W.I.C.	3'7" x 6'6"	23 sq. ft	Yes
15	Dining Area	17'5" x 9'6"	164 sq. ft	Yes

1244 Foxborough Private, Rothwell Heights - Beacon Hill North,  
Beacon Heights, Gloucester, Ontario, Canada, K1J 1E2

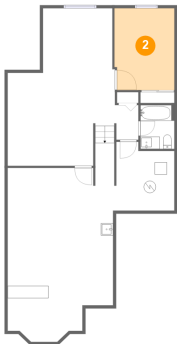
1 Floor 1 - Bath



Max Dimensions: 5'6" x 7'2"  
Calculated Area: 40 sq. ft  
Included: Yes

Heated: Yes  
Finished: Yes  
Enclosed: Yes  
Contiguous: Yes  
Permitted: Yes  
Wet space: Yes  
Addition: No  
Conversion: No

2 Floor 1 - Bedroom

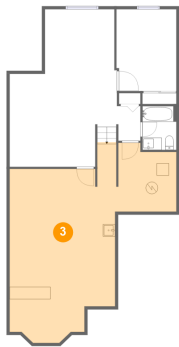


Max Dimensions: 9'9" x  
13'4"  
Calculated Area: 129 sq. ft  
Included: Yes

Heated: Yes  
Finished: Yes  
Enclosed: Yes  
Contiguous:  
Yes  
Permitted: Yes  
Wet space: No  
Addition: No  
Conversion: No

1244 Foxborough Private, Rothwell Heights - Beacon Hill North,  
Beacon Heights, Gloucester, Ontario, Canada, K1J 1E2

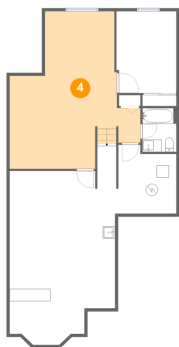
3 Floor 1 - Basement



Max Dimensions: 27'3" x 28'4"  
Calculated Area: 561 sq. ft  
Included: No

Heated: Yes  
Finished: No  
Enclosed: Yes  
Contiguous: Yes  
Permitted: Yes  
Wet space: No  
Addition: No  
Conversion: No

4 Floor 1 - Recreation Room



Max Dimensions: 21'4" x 25'8"  
Calculated Area: 391 sq. ft  
Included: Yes

Heated: Yes  
Finished: Yes  
Enclosed: Yes  
Contiguous: Yes  
Permitted: Yes  
Wet space: No  
Addition: No  
Conversion: No

5 Floor 2 - Room



Max Dimensions: 9'11" x 11'10"  
Calculated Area: 117 sq. ft  
Included: Yes

Heated: Yes  
Finished: Yes  
Enclosed: Yes  
Contiguous: Yes  
Permitted: Yes  
Wet space: No  
Addition: No  
Conversion: No

1244 Foxborough Private, Rothwell Heights - Beacon Hill North,  
Beacon Heights, Gloucester, Ontario, Canada, K1J 1E2

6 Floor 2 - Primary Bedroom



Max Dimensions: 11'2" x 21'8"  
Calculated Area: 196 sq. ft  
Included: Yes

Heated: Yes  
Finished: Yes  
Enclosed: Yes  
Contiguous: Yes  
Permitted: Yes  
Wet space: No  
Addition: No  
Conversion: No

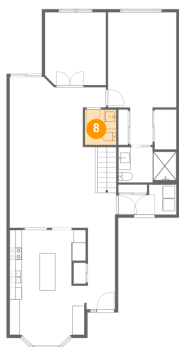
7 Floor 2 - Breakfast Nook



Max Dimensions: 12'2" x 7'7"  
Calculated Area: 82 sq. ft  
Included: Yes

Heated: Yes  
Finished: Yes  
Enclosed: Yes  
Contiguous: Yes  
Permitted: Yes  
Wet space: No  
Addition: No  
Conversion: No

8 Floor 2 - WC



Max Dimensions: 5'1" x 5'9"  
Calculated Area: 30 sq. ft  
Included: Yes

Heated: Yes  
Finished: Yes  
Enclosed: Yes  
Contiguous: Yes  
Permitted: Yes  
Wet space: Yes  
Addition: No  
Conversion: No

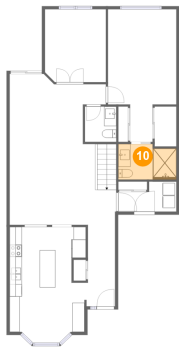
9 Floor 2 - Living Room



Max Dimensions: 15'8" x 15'2"  
Calculated Area: 205 sq. ft  
Included: Yes

Heated: Yes  
Finished: Yes  
Enclosed: Yes  
Contiguous: Yes  
Permitted: Yes  
Wet space: No  
Addition: No  
Conversion: No

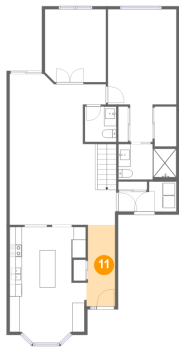
10 Floor 2 - Bath



Max Dimensions: 9'6" x 5'10"  
Calculated Area: 52 sq. ft  
Included: Yes

Heated: Yes  
Finished: Yes  
Enclosed: Yes  
Contiguous: Yes  
Permitted: Yes  
Wet space: Yes  
Addition: No  
Conversion: No

11 Floor 2 - Foyer



Max Dimensions: 4'8" x 13'3"  
Calculated Area: 60 sq. ft  
Included: Yes

Heated: Yes  
Finished: Yes  
Enclosed: Yes  
Contiguous: Yes  
Permitted: Yes  
Wet space: No  
Addition: No  
Conversion: No

1244 Foxborough Private, Rothwell Heights - Beacon Hill North,  
Beacon Heights, Gloucester, Ontario, Canada, K1J 1E2

12 Floor 2 - Laundry



Max Dimensions: 9'6" x 4'11"  
Calculated Area: 38 sq. ft  
Included: Yes

Heated: Yes  
Finished: Yes  
Enclosed: Yes  
Contiguous: Yes  
Permitted: Yes  
Wet space: No  
Addition: No  
Conversion: No

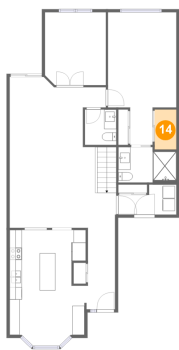
13 Floor 2 - Kitchen



Max Dimensions: 12'5" x 11'4"  
Calculated Area: 137 sq. ft  
Included: Yes

Heated: Yes  
Finished: Yes  
Enclosed: Yes  
Contiguous: Yes  
Permitted: Yes  
Wet space: No  
Addition: No  
Conversion: No

14 Floor 2 - W.I.C.



Max Dimensions: 3'7" x 6'6"  
Calculated Area: 23 sq. ft  
Included: Yes

Heated: Yes  
Finished: Yes  
Enclosed: Yes  
Contiguous: Yes  
Permitted: Yes  
Wet space: No  
Addition: No  
Conversion: No



1244 Foxborough Private, Rothwell Heights - Beacon Hill North,  
Beacon Heights, Gloucester, Ontario, Canada, K1J 1E2

15 Floor 2 - Dining Area



Max Dimensions: 17'5" x 9'6"  
Calculated Area: 164 sq. ft  
Included: Yes

Heated: Yes  
Finished: Yes  
Enclosed: Yes  
Contiguous: Yes  
Permitted: Yes  
Wet space: No  
Addition: No  
Conversion: No