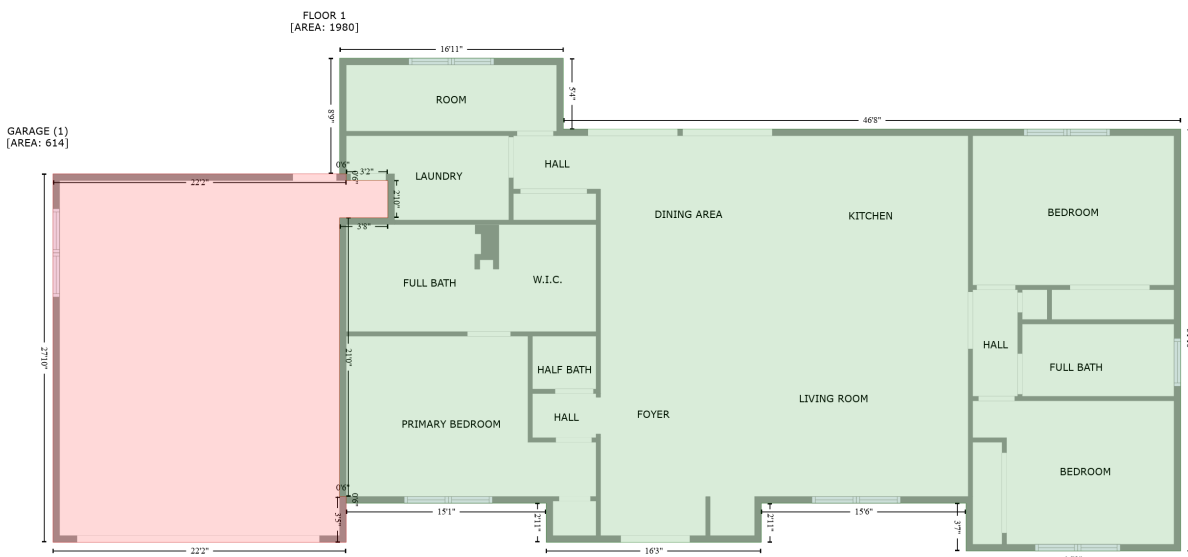


# 303 Wittenburg Springs Dr, Taylorsville, NC, United States

Gross Living Area: 1980 sq. ft

## Level 1



Space	Area (sq. ft)	Calculation
FLOOR 1 (Living area)	1980	Coordinate Polygon Area Algorithm using inches $-((456.8 + 456.8) * (1.9 - 66) + (456.8 + 1016.6) * (66 - 66) + (1016.6 + 1016.6) * (66 - 448.1) + (1016.6 + 822) * (448.1 - 448.1) + (822 + 822) * (448.1 - 404.8) + (822 + 636.3) * (404.8 - 404.8) + (636.3 + 636.3) * (404.8 - 440.3) + (636.3 + 441.2) * (440.3 - 440.3) + (441.2 + 441.2) * (440.3 - 404.8) + (441.2 + 259.9) * (404.8 - 404.8) + (259.9 + 259.9) * (404.8 - 398.8) + (259.9 + 253.9) * (398.8 - 398.8) + (253.9 + 253.9) * (398.8 - 146.4) + (253.9 + 297.7) * (146.4 - 146.4) + (297.7 + 297.7) * (146.4 - 112.6) + (297.7 + 259.9) * (112.6 - 112.6) + (259.9 + 259.9) * (112.6 - 106.6) + (259.9 + 253.9) * (106.6 - 106.6) + (253.9 + 253.9) * (106.6 - 1.9) + (253.9 + 456.8) * (1.9 - 1.9)) * 0.5 * 0.00694$
GARAGE (Non-living area)	614	$-((259.9 + 259.9) * (106.6 - 112.6) + (259.9 + 297.7) * (112.6 - 112.6) + (297.7 + 297.7) * (112.6 - 146.4) + (297.7 + 253.9) * (146.4 - 146.4) + (253.9 + 253.9) * (146.4 - 398.8) + (253.9 + 259.9) * (398.8 - 398.8) + (259.9 + 259.9) * (398.8 - 440.3) + (259.9 + -6) * (440.3 - 440.3) + (-6 + -6) * (440.3 - 106.6) + (-6 + 259.9) * (106.6 - 106.6)) * 0.5 * 0.00694$