

Home report

961 Focal Road, East Credit, Mississauga, Peel County, Ontario,  
Canada, L5V 1M8



**Total Area: 3593 sq. ft**  
Below Ground: 1047 sq. ft, Floor 2: 1200 sq. ft, Floor 3: 1346 sq. ft  
Excluded: Storage 104 sq. ft, Utility 64 sq. ft, Garage 341 sq. ft

Property summary

 **3** Floors

 **4** Bedrooms

 **3** Bathrooms

Home report

**961 Focal Road, East Credit, Mississauga, Peel County, Ontario,  
Canada, L5V 1M8**



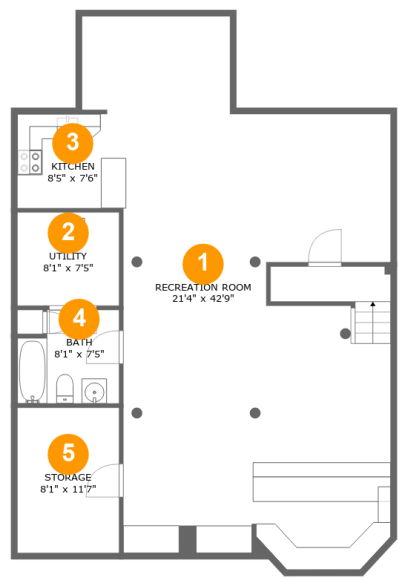
**1**  
Half baths



**1**  
Garages

Home report

961 Focal Road, East Credit, Mississauga, Peel County, Ontario,  
Canada, L5V 1M8



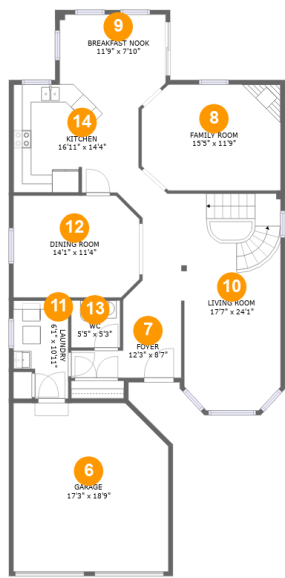
Room dimensions

Floor 1 Below ground Total:1047sqft    Excluded: 168sqft

#		Max Dimensions	sqft	Included
1	Recreation Room	21'4" x 42'9"	838 sq. ft	Yes
2	Utility	8'1" x 7'5"	60 sq. ft	No
3	Kitchen	8'5" x 7'6"	63 sq. ft	Yes
4	Bath	8'1" x 7'5"	55 sq. ft	Yes
5	Storage	8'1" x 11'7"	94 sq. ft	No

Home report

961 Focal Road, East Credit, Mississauga, Peel County, Ontario, Canada, L5V 1M8



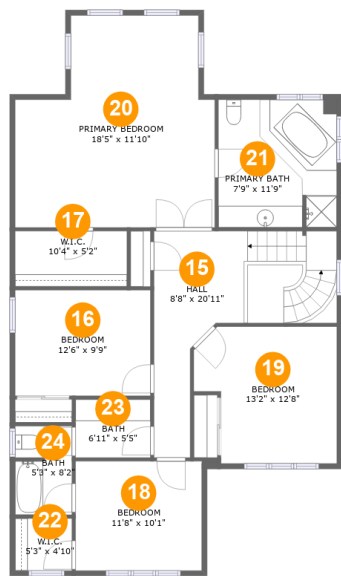
Room dimensions

Floor 2 Total:1200sqft    Excluded: 341sqft

#		Max Dimensions	sqft	Included
6	Garage	17'3" x 18'9"	312 sq. ft	No
7	Foyer	12'3" x 8'7"	73 sq. ft	Yes
8	Family Room	15'5" x 11'9"	175 sq. ft	Yes
9	Breakfast Nook	11'9" x 7'10"	92 sq. ft	Yes
10	Living Room	17'7" x 24'1"	307 sq. ft	Yes
11	Laundry	6'1" x 10'11"	59 sq. ft	Yes
12	Dining Room	14'1" x 11'4"	154 sq. ft	Yes
13	WC	5'5" x 5'3"	29 sq. ft	Yes
14	Kitchen	16'11" x 14'4"	183 sq. ft	Yes

Home report

961 Focal Road, East Credit, Mississauga, Peel County, Ontario, Canada, L5V 1M8

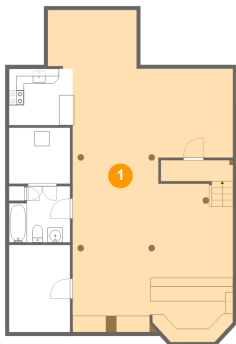


Room dimensions

Floor 3 Total:1346sqft Excluded: 0sqft

#		Max Dimensions	sqft	Included
15	Hall	8'8" x 20'11"	188 sq. ft	Yes
16	Bedroom	12'6" x 9'9"	122 sq. ft	Yes
17	W.I.C.	10'4" x 5'2"	53 sq. ft	Yes
18	Bedroom	11'8" x 10'1"	118 sq. ft	Yes
19	Bedroom	13'2" x 12'8"	148 sq. ft	Yes
20	Primary Bedroom	18'5" x 11'10"	310 sq. ft	Yes
21	Primary Bath	7'9" x 11'9"	128 sq. ft	Yes
22	W.I.C.	5'3" x 4'10"	25 sq. ft	Yes
23	Bath	6'11" x 5'5"	37 sq. ft	Yes
24	Bath	5'3" x 8'2"	42 sq. ft	Yes

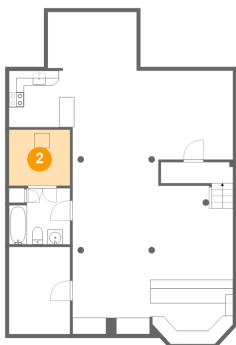
1 Floor 1 - Recreation Room



Max Dimensions: 21'4" x 42'9"  
Calculated Area: 838 sq. ft  
Included: Yes

Heated: Yes  
Finished: Yes  
Enclosed: Yes  
Contiguous: Yes  
Permitted: Yes  
Wet space: No  
Addition: No  
Conversion: No

2 Floor 1 - Utility

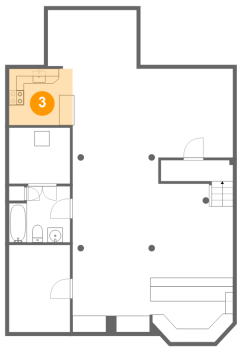


Max Dimensions: 8'1" x 7'5"  
Calculated Area: 60 sq. ft  
Included: No

Heated: Yes  
Finished: No  
Enclosed: Yes  
Contiguous: Yes  
Permitted: Yes  
Wet space: No  
Addition: No  
Conversion: No

961 Focal Road, East Credit, Mississauga, Peel County, Ontario, Canada, L5V 1M8

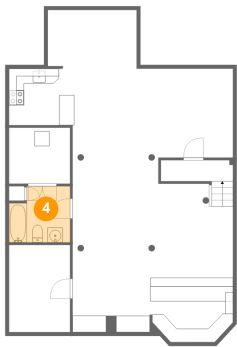
3 Floor 1 - Kitchen



Max Dimensions: 8'5" x 7'6"  
Calculated Area: 63 sq. ft  
Included: Yes

Heated: Yes  
Finished: Yes  
Enclosed: Yes  
Contiguous: Yes  
Permitted: Yes  
Wet space: No  
Addition: No  
Conversion: No

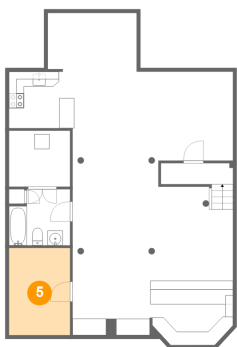
4 Floor 1 - Bath



Max Dimensions: 8'1" x 7'5"  
Calculated Area: 55 sq. ft  
Included: Yes

Heated: Yes  
Finished: Yes  
Enclosed: Yes  
Contiguous: Yes  
Permitted: Yes  
Wet space: Yes  
Addition: No  
Conversion: No

5 Floor 1 - Storage



Max Dimensions: 8'1" x 11'7"  
Calculated Area: 94 sq. ft  
Included: No

Heated: No  
Finished: No  
Enclosed: No  
Contiguous: Yes  
Permitted: Yes  
Wet space: No  
Addition: No  
Conversion: No

6 Floor 2 - Garage



Max Dimensions: 17'3" x 18'9"  
Calculated Area: 312 sq. ft  
Included: No

Heated: No  
Finished: No  
Enclosed: Yes  
Contiguous: Yes  
Permitted: Yes  
Wet space: No  
Addition: No  
Conversion: No

7 Floor 2 - Foyer



Max Dimensions: 12'3" x 8'7"  
Calculated Area: 73 sq. ft  
Included: Yes

Heated: Yes  
Finished: Yes  
Enclosed: Yes  
Contiguous: Yes  
Permitted: Yes  
Wet space: No  
Addition: No  
Conversion: No

8 Floor 2 - Family Room



Max Dimensions: 15'5" x 11'9"  
Calculated Area: 175 sq. ft  
Included: Yes

Heated: Yes  
Finished: Yes  
Enclosed: Yes  
Contiguous: Yes  
Permitted: Yes  
Wet space: No  
Addition: No  
Conversion: No



9 Floor 2 - Breakfast Nook



Max Dimensions: 11'9" x 7'10"  
Calculated Area: 92 sq. ft  
Included: Yes

Heated: Yes  
Finished: Yes  
Enclosed: Yes  
Contiguous: Yes  
Permitted: Yes  
Wet space: No  
Addition: No  
Conversion: No

10 Floor 2 - Living Room



Max Dimensions: 17'7" x 24'1"  
Calculated Area: 307 sq. ft  
Included: Yes

Heated: Yes  
Finished: Yes  
Enclosed: Yes  
Contiguous: Yes  
Permitted: Yes  
Wet space: No  
Addition: No  
Conversion: No

11 Floor 2 - Laundry



Max Dimensions: 6'1" x 10'11"  
Calculated Area: 59 sq. ft  
Included: Yes

Heated: Yes  
Finished: Yes  
Enclosed: Yes  
Contiguous: Yes  
Permitted: Yes  
Wet space: No  
Addition: No  
Conversion: No

12 Floor 2 - Dining Room



Max Dimensions: 14'1" x 11'4"  
Calculated Area: 154 sq. ft  
Included: Yes

Heated: Yes  
Finished: Yes  
Enclosed: Yes  
Contiguous: Yes  
Permitted: Yes  
Wet space: No  
Addition: No  
Conversion: No

13 Floor 2 - WC



Max Dimensions: 5'5" x 5'3"  
Calculated Area: 29 sq. ft  
Included: Yes

Heated: Yes  
Finished: Yes  
Enclosed: Yes  
Contiguous: Yes  
Permitted: Yes  
Wet space: Yes  
Addition: No  
Conversion: No

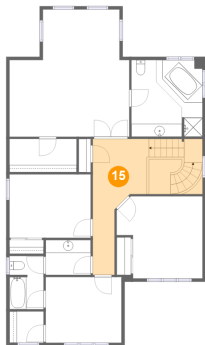
14 Floor 2 - Kitchen



Max Dimensions: 16'11" x 14'4"  
Calculated Area: 183 sq. ft  
Included: Yes

Heated: Yes  
Finished: Yes  
Enclosed: Yes  
Contiguous: Yes  
Permitted: Yes  
Wet space: No  
Addition: No  
Conversion: No

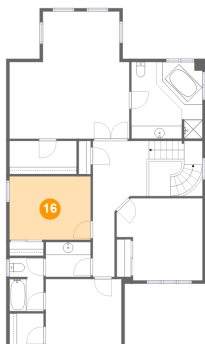
15 Floor 3 - Hall



Max Dimensions: 8'8" x 20'11"  
Calculated Area: 188 sq. ft  
Included: Yes

Heated: Yes  
Finished: Yes  
Enclosed: Yes  
Contiguous: Yes  
Permitted: Yes  
Wet space: No  
Addition: No  
Conversion: No

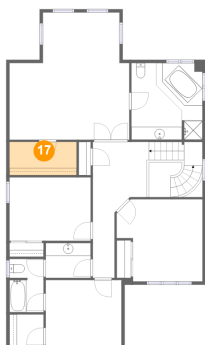
16 Floor 3 - Bedroom



Max Dimensions: 12'6" x 9'9"  
Calculated Area: 122 sq. ft  
Included: Yes

Heated: Yes  
Finished: Yes  
Enclosed: Yes  
Contiguous: Yes  
Permitted: Yes  
Wet space: No  
Addition: No  
Conversion: No

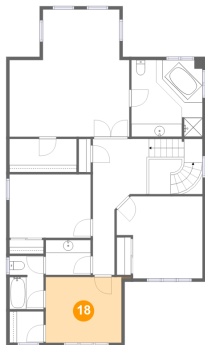
17 Floor 3 - W.I.C.



Max Dimensions: 10'4" x 5'2"  
Calculated Area: 53 sq. ft  
Included: Yes

Heated: Yes  
Finished: Yes  
Enclosed: Yes  
Contiguous: Yes  
Permitted: Yes  
Wet space: No  
Addition: No  
Conversion: No

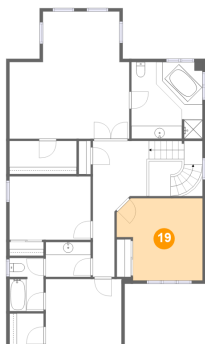
18 Floor 3 - Bedroom



Max Dimensions: 11'8" x 10'1"  
Calculated Area: 118 sq. ft  
Included: Yes

Heated: Yes  
Finished: Yes  
Enclosed: Yes  
Contiguous: Yes  
Permitted: Yes  
Wet space: No  
Addition: No  
Conversion: No

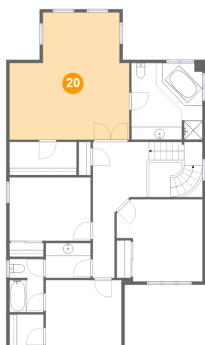
19 Floor 3 - Bedroom



Max Dimensions: 13'2" x 12'8"  
Calculated Area: 148 sq. ft  
Included: Yes

Heated: Yes  
Finished: Yes  
Enclosed: Yes  
Contiguous: Yes  
Permitted: Yes  
Wet space: No  
Addition: No  
Conversion: No

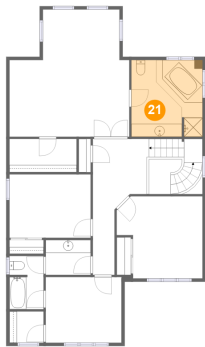
20 Floor 3 - Primary Bedroom



Max Dimensions: 18'5" x 11'10"  
Calculated Area: 310 sq. ft  
Included: Yes

Heated: Yes  
Finished: Yes  
Enclosed: Yes  
Contiguous: Yes  
Permitted: Yes  
Wet space: No  
Addition: No  
Conversion: No

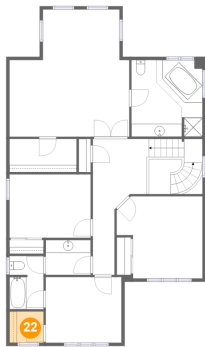
21 Floor 3 - Primary Bath



Max Dimensions: 7'9" x 11'9"  
Calculated Area: 128 sq. ft  
Included: Yes

Heated: Yes  
Finished: Yes  
Enclosed: Yes  
Contiguous: Yes  
Permitted: Yes  
Wet space: Yes  
Addition: No  
Conversion: No

22 Floor 3 - W.I.C.



Max Dimensions: 5'3" x 4'10"  
Calculated Area: 25 sq. ft  
Included: Yes

Heated: Yes  
Finished: Yes  
Enclosed: Yes  
Contiguous: Yes  
Permitted: Yes  
Wet space: No  
Addition: No  
Conversion: No

23 Floor 3 - Bath

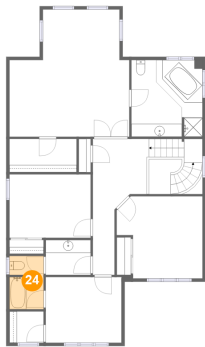


Max Dimensions: 6'11" x 5'5"  
Calculated Area: 37 sq. ft  
Included: Yes

Heated: Yes  
Finished: Yes  
Enclosed: Yes  
Contiguous: Yes  
Permitted: Yes  
Wet space: Yes  
Addition: No  
Conversion: No

961 Focal Road, East Credit, Mississauga, Peel County, Ontario,  
Canada, L5V 1M8

**24** Floor 3 - Bath



Max Dimensions: 5'3" x 8'2"  
Calculated Area: 42 sq. ft  
Included: Yes

Heated: Yes  
Finished: Yes  
Enclosed: Yes  
Contiguous: Yes  
Permitted: Yes  
Wet space: Yes  
Addition: No  
Conversion: No