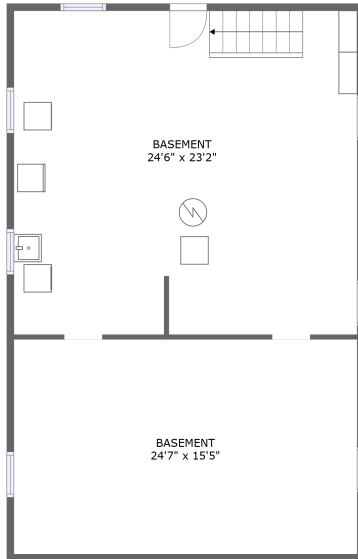
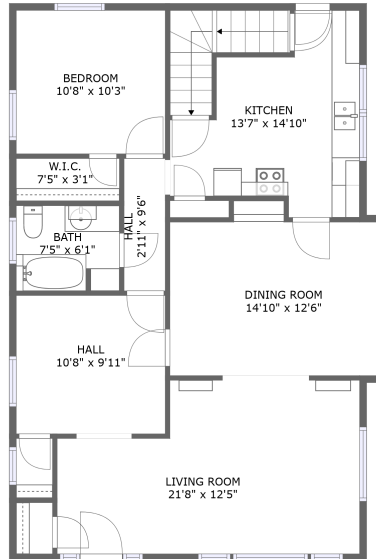


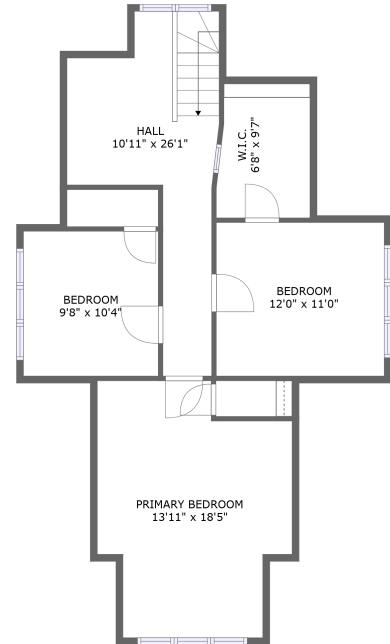
# 716 N Alberta St, Portland, OR, US



FLOOR 1




FLOOR 2



FLOOR 3

## Property summary

 **0** Garages

 **4** Bedrooms

 **1** Bathrooms

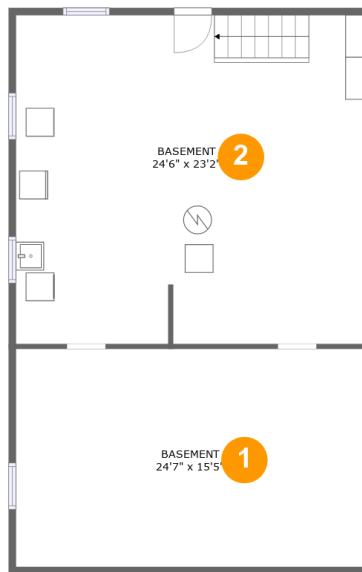
 **0** Half baths

 **3** Floors

 **1,803** Gross living area sqft

 **2,861** Total sqft

# 716 N Alberta St, Portland, OR, US



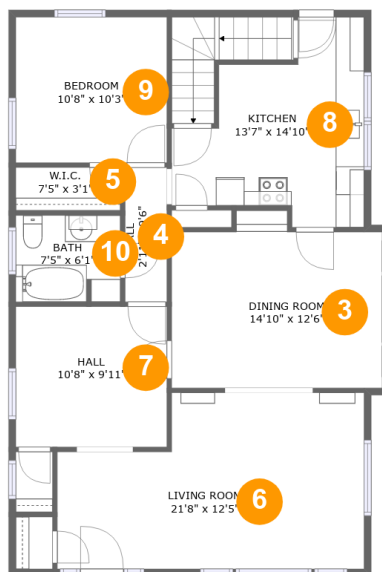
## Room dimensions

Floor 1

Total sqft: 1021

Living area: 0

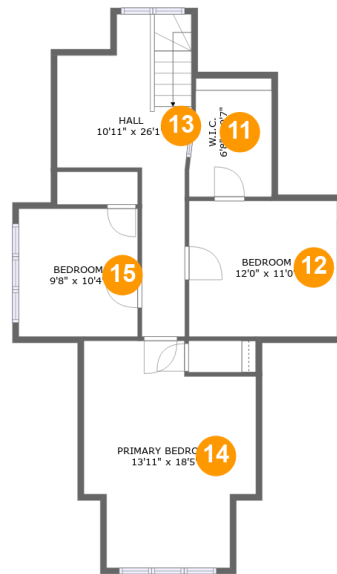
#		Dimensions	sqft	Counted as living area
1	Basement	24'7" x 15'5"	378 sq. ft	No
2	Basement	24'6" x 23'2"	569 sq. ft	No

**716 N Alberta St,Portland,OR,US****Room dimensions**

Floor 2

Total sqft: 1036 Living area: 1036

#		Dimensions	sqft	Counted as living area
3	Dining Room	14'10" x 12'6"	169 sq. ft	Yes
4	Hall	2'11" x 9'6"	28 sq. ft	Yes
5	W.I.C.	7'5" x 3'1"	22 sq. ft	Yes
6	Living Room	21'8" x 12'5"	235 sq. ft	Yes
7	Hall	10'8" x 9'11"	106 sq. ft	Yes
8	Kitchen	13'7" x 14'10"	143 sq. ft	Yes
9	Bedroom	10'8" x 10'3"	109 sq. ft	Yes
10	Bath	7'5" x 6'1"	44 sq. ft	Yes

**716 N Alberta St,Portland,OR,US**

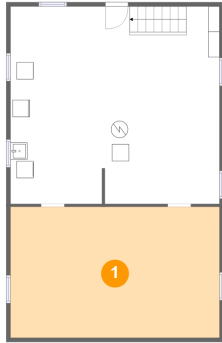
## Room dimensions

Floor 3

Total sqft: 804 Living area: 767

#		Dimensions	sqft	Counted as living area
11	W.I.C.	6'8" x 9'7"	51 sq. ft	Yes
12	Bedroom	12'0" x 11'0"	132 sq. ft	Yes
13	Hall	10'11" x 26'1"	153 sq. ft	Yes
14	Primary Bedroom	13'11" x 18'5"	216 sq. ft	Yes
15	Bedroom	9'8" x 10'4"	100 sq. ft	Yes

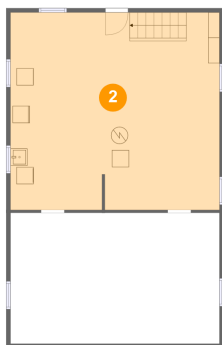
## 1 Floor 1 - Basement



Dimensions: 24'7" x 15'5"  
Area: 378 sq. ft  
Counted as living area: No

Heated: Yes  
Finished: No  
Enclosed: Yes  
Contiguous: Yes  
Permitted: Yes  
Wet space: No  
Addition: No  
Conversion: No

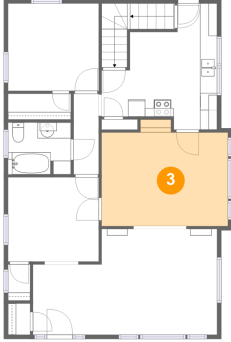
## 2 Floor 1 - Basement



Dimensions: 24'6" x 23'2"  
Area: 569 sq. ft  
Counted as living area: No

Heated: Yes  
Finished: No  
Enclosed: Yes  
Contiguous: Yes  
Permitted: Yes  
Wet space: No  
Addition: No  
Conversion: No

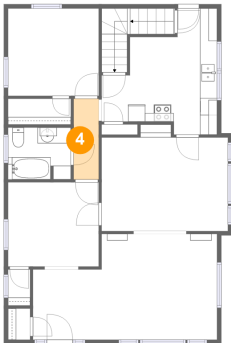
### 3 Floor 2 - Dining Room



Dimensions: 14'10" x 12'6"  
Area: 169 sq. ft  
Counted as living area: Yes

Heated: Yes  
Finished: Yes  
Enclosed: Yes  
Contiguous: Yes  
Permitted: Yes  
Wet space: No  
Addition: No  
Conversion: No

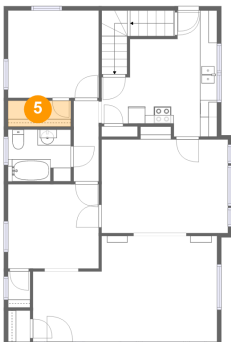
### 4 Floor 2 - Hall



Dimensions: 2'11" x 9'6"  
Area: 28 sq. ft  
Counted as living area: Yes

Heated: Yes  
Finished: Yes  
Enclosed: Yes  
Contiguous: Yes  
Permitted: Yes  
Wet space: No  
Addition: No  
Conversion: No

### 5 Floor 2 - W.I.C.

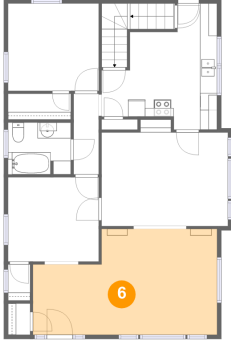


Dimensions: 7'5" x 3'1"  
Area: 22 sq. ft  
Counted as living area: Yes

Heated: Yes  
Finished: Yes  
Enclosed: Yes  
Contiguous: Yes  
Permitted: Yes  
Wet space: No  
Addition: No  
Conversion: No

# 716 N Alberta St, Portland, OR, US

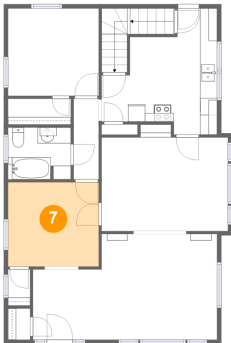
## 6 Floor 2 - Living Room



**Dimensions:** 21'8" x 12'5"  
**Area:** 235 sq. ft  
**Counted as living area:** Yes

**Heated:** Yes  
**Finished:** Yes  
**Enclosed:** Yes  
**Contiguous:** Yes  
**Permitted:** Yes  
**Wet space:** No  
**Addition:** No  
**Conversion:** No

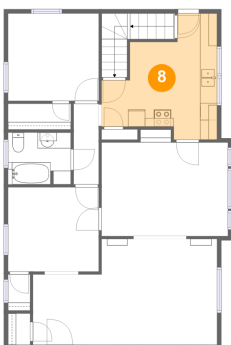
## 7 Floor 2 - Hall



**Dimensions:** 10'8" x 9'11"  
**Area:** 106 sq. ft  
**Counted as living area:** Yes

**Heated:** Yes  
**Finished:** Yes  
**Enclosed:** Yes  
**Contiguous:** Yes  
**Permitted:** Yes  
**Wet space:** No  
**Addition:** No  
**Conversion:** No

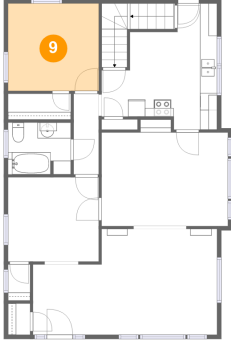
## 8 Floor 2 - Kitchen



**Dimensions:** 13'7" x 14'10"  
**Area:** 143 sq. ft  
**Counted as living area:** Yes

**Heated:** Yes  
**Finished:** Yes  
**Enclosed:** Yes  
**Contiguous:** Yes  
**Permitted:** Yes  
**Wet space:** No  
**Addition:** No  
**Conversion:** No

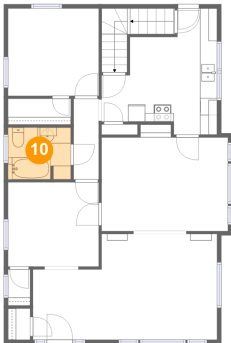
**9** Floor 2 - Bedroom



Dimensions: 10'8" x 10'3"  
Area: 109 sq. ft  
Counted as living area: Yes

Heated: Yes  
Finished: Yes  
Enclosed: Yes  
Contiguous: Yes  
Permitted: Yes  
Wet space: No  
Addition: No  
Conversion: No

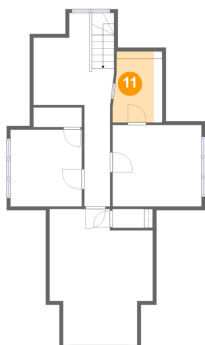
**10** Floor 2 - Bath



Dimensions: 7'5" x 6'1"  
Area: 44 sq. ft  
Counted as living area: Yes

Heated: Yes  
Finished: Yes  
Enclosed: Yes  
Contiguous: Yes  
Permitted: Yes  
Wet space: Yes  
Addition: No  
Conversion: No

**11** Floor 3 - W.I.C.

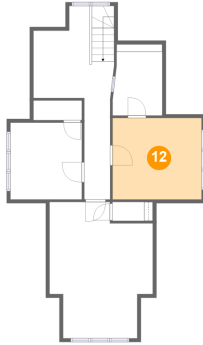


Dimensions: 6'8" x 9'7"  
Area: 51 sq. ft  
Counted as living area: Yes

Heated: Yes  
Finished: Yes  
Enclosed: Yes  
Contiguous: Yes  
Permitted: Yes  
Wet space: No  
Addition: No  
Conversion: No



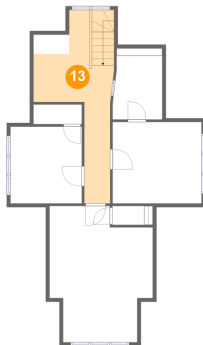
### 12 Floor 3 - Bedroom



Dimensions: 12'0" x 11'0"  
Area: 132 sq. ft  
Counted as living area: Yes

Heated: Yes  
Finished: Yes  
Enclosed: Yes  
Contiguous: Yes  
Permitted: Yes  
Wet space: No  
Addition: No  
Conversion: No

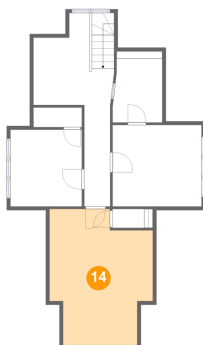
### 13 Floor 3 - Hall



Dimensions: 10'11" x 26'1"  
Area: 153 sq. ft  
Counted as living area: Yes

Heated: Yes  
Finished: Yes  
Enclosed: Yes  
Contiguous: Yes  
Permitted: Yes  
Wet space: No  
Addition: No  
Conversion: No

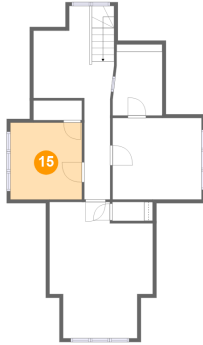
### 14 Floor 3 - Primary Bedroom



Dimensions: 13'11" x 18'5"  
Area: 216 sq. ft  
Counted as living area: Yes

Heated: Yes  
Finished: Yes  
Enclosed: Yes  
Contiguous: Yes  
Permitted: Yes  
Wet space: No  
Addition: No  
Conversion: No

**15** Floor 3 - Bedroom



**Dimensions:** 9'8" x 10'4"  
**Area:** 100 sq. ft  
**Counted as living area:** Yes

**Heated:** Yes  
**Finished:** Yes  
**Enclosed:** Yes  
**Contiguous:** Yes  
**Permitted:** Yes  
**Wet space:** No  
**Addition:** No  
**Conversion:** No