

1710 Dawn Lane, Greater Deyerle, Roanoke, Roanoke, Virginia, United States, 24018

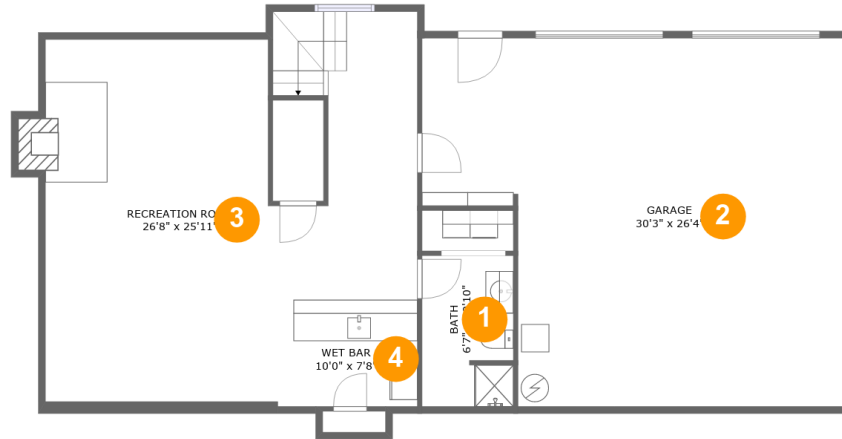


Property Summary

1 garages **5** bedrooms **4** bathrooms **1** half baths

4 floors **4,192** Gross Living Area sqft **5,318** total sqft

1710 Dawn Lane, Greater Deyerle, Roanoke, Roanoke, Virginia, United States, 24018



Room Dimensions

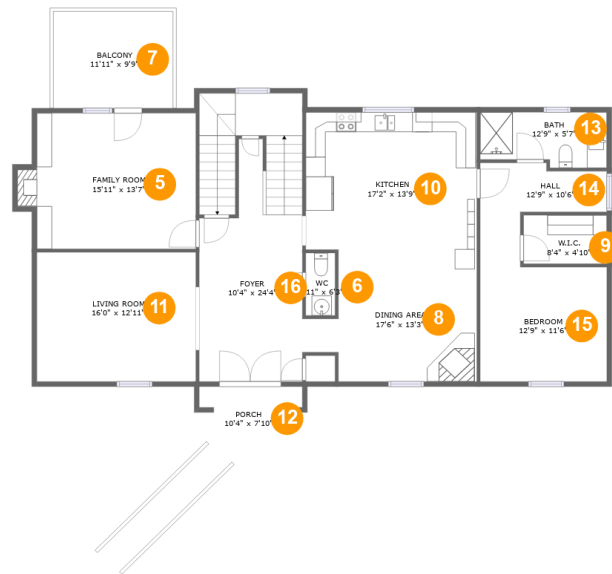
Floor 1

Total sqft: 1634

Living area: 886

#	Room name	Dimensions	Area (sqft)	Counted as Living Area
1	Bath	6'7" x 10'10"	70 sq. ft	Yes
2	Garage	30'3" x 26'4"	699 sq. ft	No
3	Recreation Room	26'8" x 25'11"	612 sq. ft	Yes
4	Wet Bar	10'0" x 7'8"	76 sq. ft	Yes

1710 Dawn Lane, Greater Deyerle, Roanoke, Roanoke, Virginia, United States, 24018



Room Dimensions

Floor 2

Total sqft: 1891

Living area: 1655

#	Room name	Dimensions	Area (sqft)	Counted as Living Area
5	Family Room	15'11" x 13'7"	225 sq. ft	Yes
6	Wc	2'11" x 6'3"	18 sq. ft	Yes
7	Balcony	11'11" x 9'9"	117 sq. ft	No
8	Dining Area	17'6" x 13'3"	196 sq. ft	Yes
9	W.i.c.	8'4" x 4'10"	41 sq. ft	Yes
10	Kitchen	17'2" x 13'9"	237 sq. ft	Yes
11	Living Room	16'0" x 12'11"	207 sq. ft	Yes
12	Porch	10'4" x 7'10"	110 sq. ft	No
13	Bath	12'9" x 5'7"	65 sq. ft	Yes
14	Hall	12'9" x 10'6"	80 sq. ft	Yes
15	Bedroom	12'9" x 11'6"	146 sq. ft	Yes

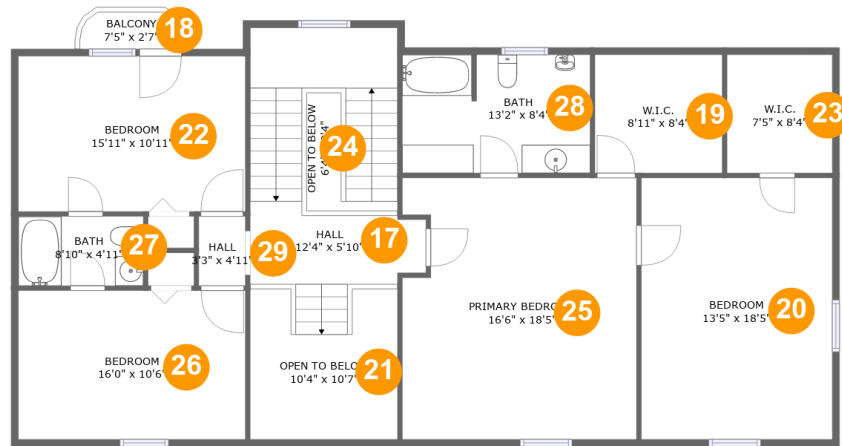
Scan captured on Fri, 06 Sep 2024 15:09:16 GMT

Information is calculated by CubiCasa technology; deemed highly reliable but not guaranteed.

**1710 Dawn Lane, Greater Deyerle, Roanoke,
Roanoke, Virginia, United States, 24018**

#	Room name	Dimensions	Area (sqft)	Counted as Living Area
16	Foyer	10'4" x 24'4"	294 sq. ft	Yes

1710 Dawn Lane, Greater Deyerle, Roanoke, Roanoke, Virginia, United States, 24018



Room Dimensions

Floor 3

Total sqft: 1671

Living area: 1529

#	Room name	Dimensions	Area (sqft)	Counted as Living Area
17	Hall	12'4" x 5'10"	189 sq. ft	Yes
18	Balcony	7'5" x 2'7"	18 sq. ft	No
19	W.i.c.	8'11" x 8'4"	75 sq. ft	Yes
20	Bedroom	13'5" x 18'5"	247 sq. ft	Yes
21	Open To Below	10'4" x 10'7"	96 sq. ft	No
22	Bedroom	15'11" x 10'11"	174 sq. ft	Yes
23	W.i.c.	7'5" x 8'4"	62 sq. ft	Yes
24	Open To Below	6'4" x 8'4"	23 sq. ft	No
25	Primary Bedroom	16'6" x 18'5"	294 sq. ft	Yes
26	Bedroom	16'0" x 10'6"	167 sq. ft	Yes
27	Bath	8'10" x 4'11"	43 sq. ft	Yes

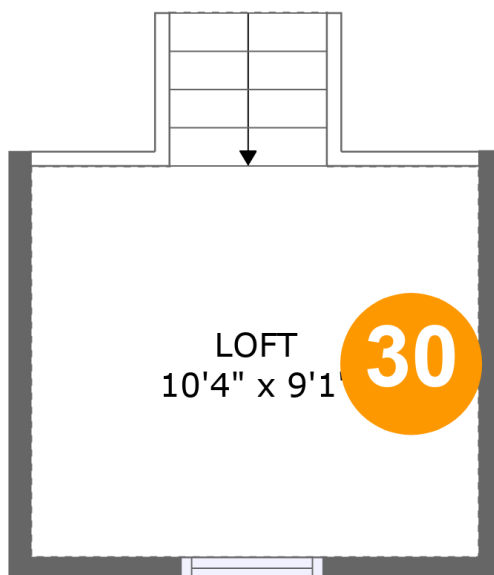
Scan captured on Fri, 06 Sep 2024 15:09:16 GMT

Information is calculated by CubiCasa technology; deemed highly reliable but not guaranteed.

**1710 Dawn Lane, Greater Deyerle, Roanoke,
Roanoke, Virginia, United States, 24018**

#	Room name	Dimensions	Area (sqft)	Counted as Living Area
28	Bath	13'2" x 8'4"	109 sq. ft	Yes
29	Hall	3'3" x 4'11"	16 sq. ft	Yes

1710 Dawn Lane, Greater Deyerle, Roanoke, Roanoke, Virginia, United States, 24018



Room Dimensions

Floor 4

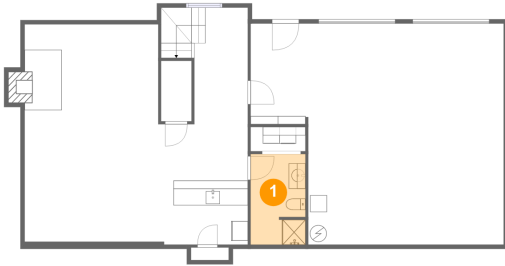
Total sqft: 122

Living area: 122

#	Room name	Dimensions	Area (sqft)	Counted as Living Area
30	Loft	10'4" x 9'1"	107 sq. ft	Yes

1710 Dawn Lane, Greater Deyerle, Roanoke, Roanoke, Virginia, United States, 24018

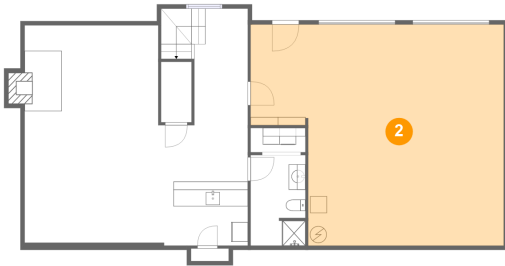
1 Floor 1 - Bath



Dimensions: 6'7" x 10'10"
Area: 70 sq. ft
Counted as Living Area:
Yes

Heated: Yes
Finished: Yes
Enclosed: Yes
Contiguous:
Yes
Permitted: Yes
Wet Space: Yes
Addition: No
Conversion: No

2 Floor 1 - Garage

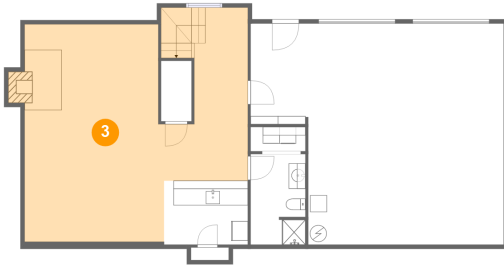


Dimensions: 30'3" x 26'4"
Area: 699 sq. ft
Counted as Living Area: No

Heated: No
Finished: No
Enclosed: Yes
Contiguous: Yes
Permitted: Yes
Wet Space: No
Addition: No
Conversion: No

1710 Dawn Lane, Greater Deyerle, Roanoke, Roanoke, Virginia, United States, 24018

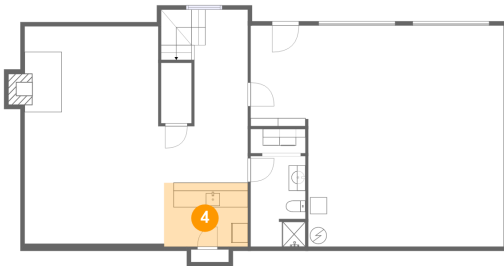
3 Floor 1 - Recreation Room



Dimensions: 26'8" x 25'11"
Area: 612 sq. ft
Counted as Living Area:
Yes

Heated: Yes
Finished: Yes
Enclosed: Yes
Contiguous:
Yes
Permitted: Yes
Wet Space: No
Addition: No
Conversion: No

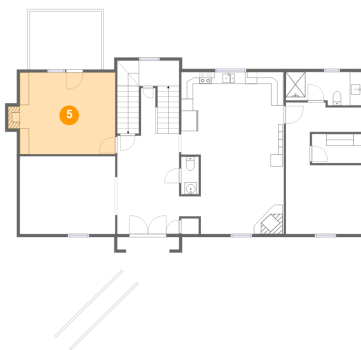
4 Floor 1 - Wet Bar



Dimensions: 10'0" x 7'8"
Area: 76 sq. ft
Counted as Living Area:
Yes

Heated: Yes
Finished: Yes
Enclosed: Yes
Contiguous:
Yes
Permitted: Yes
Wet Space: No
Addition: No
Conversion: No

5 Floor 2 - Family Room

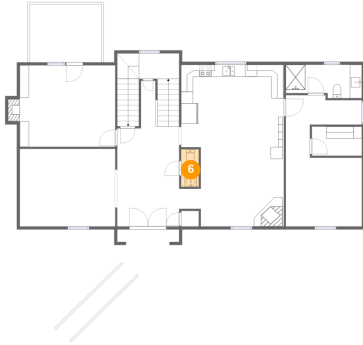


Dimensions: 15'11" x 13'7"
Area: 225 sq. ft
Counted as Living Area:
Yes

Heated: Yes
Finished: Yes
Enclosed: Yes
Contiguous:
Yes
Permitted: Yes
Wet Space: No
Addition: No
Conversion: No

1710 Dawn Lane, Greater Deyerle, Roanoke, Roanoke, Virginia, United States, 24018

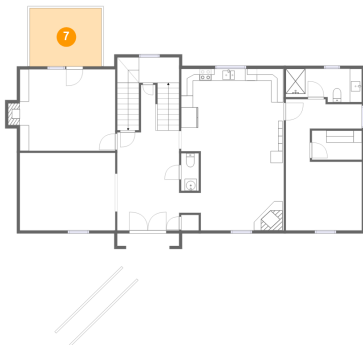
6 Floor 2 - Wc



Dimensions: 2'11" x 6'3"
Area: 18 sq. ft
Counted as Living Area:
Yes

Heated: Yes
Finished: Yes
Enclosed: Yes
Contiguous:
Yes
Permitted: Yes
Wet Space: Yes
Addition: No
Conversion: No

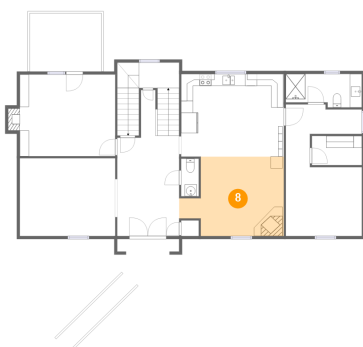
7 Floor 2 - Balcony



Dimensions: 11'11" x 9'9"
Area: 117 sq. ft
Counted as Living Area: No

Heated: No
Finished: Yes
Enclosed: No
Contiguous: Yes
Permitted: Yes
Wet Space: No
Addition: No
Conversion: No

8 Floor 2 - Dining Area

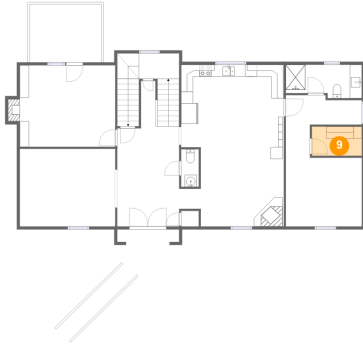


Dimensions: 17'6" x 13'3"
Area: 196 sq. ft
Counted as Living Area:
Yes

Heated: Yes
Finished: Yes
Enclosed: Yes
Contiguous:
Yes
Permitted: Yes
Wet Space: No
Addition: No
Conversion: No

**1710 Dawn Lane, Greater Deyerle, Roanoke,
Roanoke, Virginia, United States, 24018**

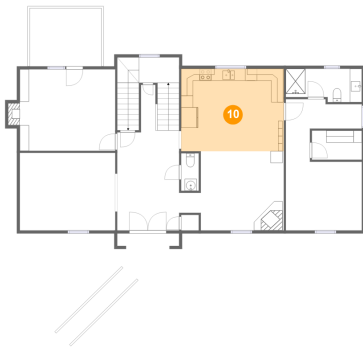
9 Floor 2 - W.i.c.



Dimensions: 8'4" x 4'10"
Area: 41 sq. ft
Counted as Living Area:
Yes

Heated: Yes
Finished: Yes
Enclosed: Yes
Contiguous:
Yes
Permitted: Yes
Wet Space: No
Addition: No
Conversion: No

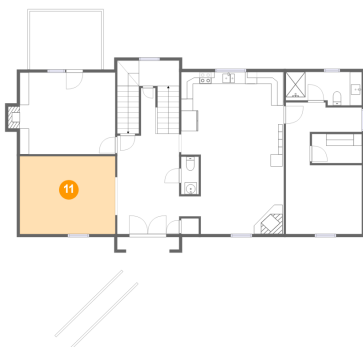
10 Floor 2 - Kitchen



Dimensions: 17'2" x 13'9"
Area: 237 sq. ft
Counted as Living Area:
Yes

Heated: Yes
Finished: Yes
Enclosed: Yes
Contiguous:
Yes
Permitted: Yes
Wet Space: No
Addition: No
Conversion: No

11 Floor 2 - Living Room

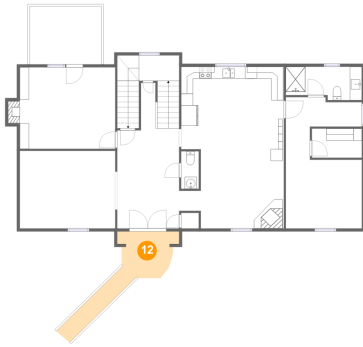


Dimensions: 16'0" x 12'11"
Area: 207 sq. ft
Counted as Living Area:
Yes

Heated: Yes
Finished: Yes
Enclosed: Yes
Contiguous:
Yes
Permitted: Yes
Wet Space: No
Addition: No
Conversion: No

1710 Dawn Lane, Greater Deyerle, Roanoke, Roanoke, Virginia, United States, 24018

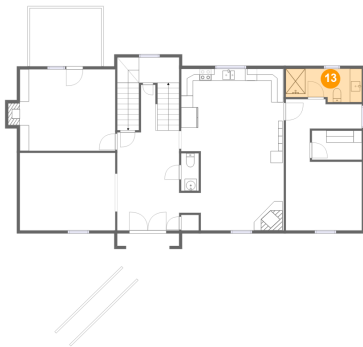
12 Floor 2 - Porch



Dimensions: 10'4" x 7'10"
Area: 110 sq. ft
Counted as Living Area: No

Heated: No
Finished: Yes
Enclosed: No
Contiguous: Yes
Permitted: Yes
Wet Space: No
Addition: No
Conversion: No

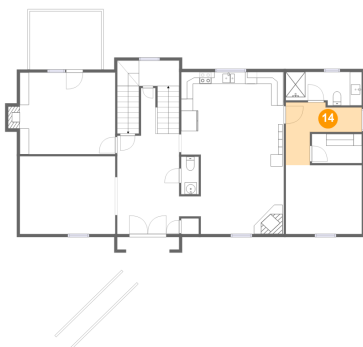
13 Floor 2 - Bath



Dimensions: 12'9" x 5'7"
Area: 65 sq. ft
Counted as Living Area:
Yes

Heated: Yes
Finished: Yes
Enclosed: Yes
Contiguous:
Yes
Permitted: Yes
Wet Space: Yes
Addition: No
Conversion: No

14 Floor 2 - Hall

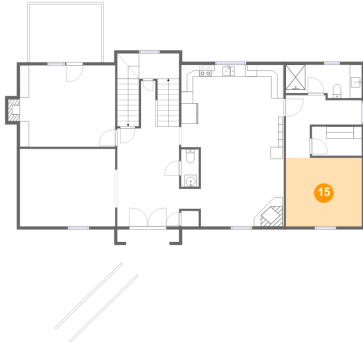


Dimensions: 12'9" x 10'6"
Area: 80 sq. ft
Counted as Living Area:
Yes

Heated: Yes
Finished: Yes
Enclosed: Yes
Contiguous:
Yes
Permitted: Yes
Wet Space: No
Addition: No
Conversion: No

1710 Dawn Lane, Greater Deyerle, Roanoke, Roanoke, Virginia, United States, 24018

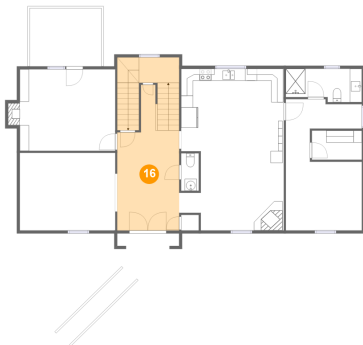
15 Floor 2 - Bedroom



Dimensions: 12'9" x 11'6"
Area: 146 sq. ft
Counted as Living Area:
Yes

Heated: Yes
Finished: Yes
Enclosed: Yes
Contiguous:
Yes
Permitted: Yes
Wet Space: No
Addition: No
Conversion: No

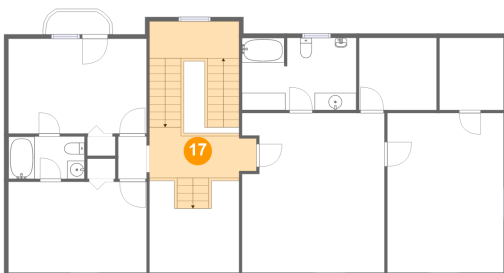
16 Floor 2 - Foyer



Dimensions: 10'4" x 24'4"
Area: 294 sq. ft
Counted as Living Area:
Yes

Heated: Yes
Finished: Yes
Enclosed: Yes
Contiguous:
Yes
Permitted: Yes
Wet Space: No
Addition: No
Conversion: No

17 Floor 3 - Hall

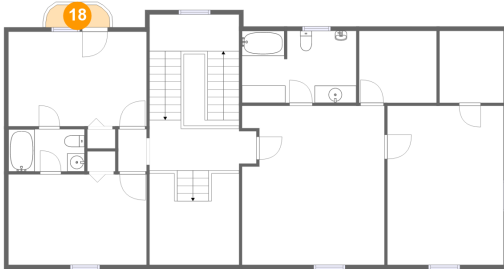


Dimensions: 12'4" x 5'10"
Area: 189 sq. ft
Counted as Living Area:
Yes

Heated: Yes
Finished: Yes
Enclosed: Yes
Contiguous:
Yes
Permitted: Yes
Wet Space: No
Addition: No
Conversion: No

**1710 Dawn Lane, Greater Deyerle, Roanoke,
Roanoke, Virginia, United States, 24018**

18 Floor 3 - Balcony



Dimensions: 7'5" x 2'7"
Area: 18 sq. ft
Counted as Living Area: No

Heated: No
Finished: Yes
Enclosed: No
Contiguous: Yes
Permitted: Yes
Wet Space: No
Addition: No
Conversion: No

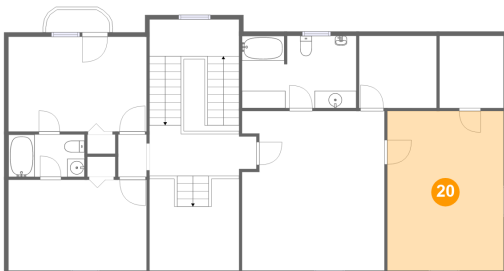
19 Floor 3 - W.i.c.



Dimensions: 8'11" x 8'4"
Area: 75 sq. ft
Counted as Living Area:
Yes

Heated: Yes
Finished: Yes
Enclosed: Yes
Contiguous:
Yes
Permitted: Yes
Wet Space: No
Addition: No
Conversion: No

20 Floor 3 - Bedroom

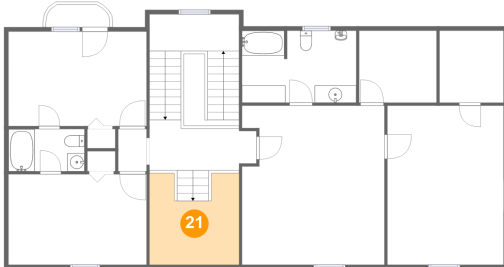


Dimensions: 13'5" x 18'5"
Area: 247 sq. ft
Counted as Living Area:
Yes

Heated: Yes
Finished: Yes
Enclosed: Yes
Contiguous:
Yes
Permitted: Yes
Wet Space: No
Addition: No
Conversion: No

**1710 Dawn Lane, Greater Deyerle, Roanoke,
Roanoke, Virginia, United States, 24018**

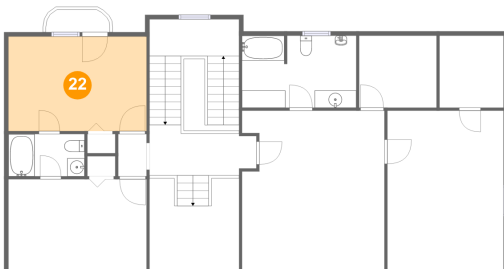
21 Floor 3 - Open To Below



Dimensions: 10'4" x 10'7"
Area: 96 sq. ft
Counted as Living Area: No

Heated: No
Finished: No
Enclosed: No
Contiguous: Yes
Permitted: No
Wet Space: No
Addition: No
Conversion: No

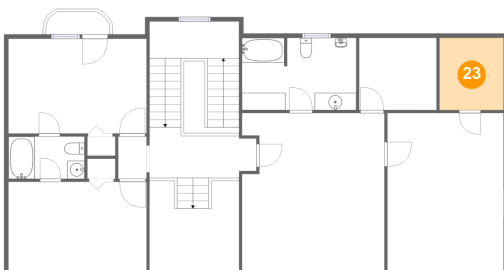
22 Floor 3 - Bedroom



Dimensions: 15'11" x 10'11"
Area: 174 sq. ft
Counted as Living Area:
Yes

Heated: Yes
Finished: Yes
Enclosed: Yes
Contiguous:
Yes
Permitted: Yes
Wet Space: No
Addition: No
Conversion: No

23 Floor 3 - W.i.c.

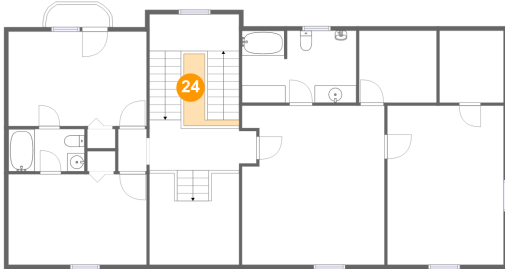


Dimensions: 7'5" x 8'4"
Area: 62 sq. ft
Counted as Living Area:
Yes

Heated: Yes
Finished: Yes
Enclosed: Yes
Contiguous:
Yes
Permitted: Yes
Wet Space: No
Addition: No
Conversion: No

1710 Dawn Lane, Greater Deyerle, Roanoke, Roanoke, Virginia, United States, 24018

24 Floor 3 - Open To Below



Dimensions: 6'4" x 8'4"
Area: 23 sq. ft
Counted as Living Area: No

Heated: No
Finished: No
Enclosed: No
Contiguous: Yes
Permitted: No
Wet Space: No
Addition: No
Conversion: No

25 Floor 3 - Primary Bedroom



Dimensions: 16'6" x 18'5"
Area: 294 sq. ft
Counted as Living Area:
Yes

Heated: Yes
Finished: Yes
Enclosed: Yes
Contiguous:
Yes
Permitted: Yes
Wet Space: No
Addition: No
Conversion: No

26 Floor 3 - Bedroom

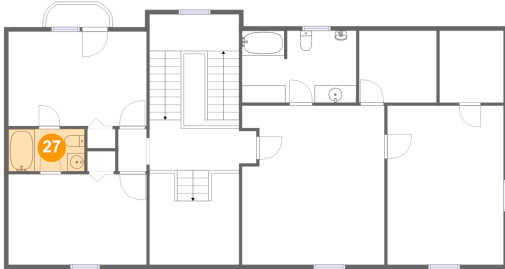


Dimensions: 16'0" x 10'6"
Area: 167 sq. ft
Counted as Living Area:
Yes

Heated: Yes
Finished: Yes
Enclosed: Yes
Contiguous:
Yes
Permitted: Yes
Wet Space: No
Addition: No
Conversion: No

1710 Dawn Lane, Greater Deyerle, Roanoke, Roanoke, Virginia, United States, 24018

27 Floor 3 - Bath



Dimensions: 8'10" x 4'11"
Area: 43 sq. ft
Counted as Living Area:
Yes

Heated: Yes
Finished: Yes
Enclosed: Yes
Contiguous:
Yes
Permitted: Yes
Wet Space: Yes
Addition: No
Conversion: No

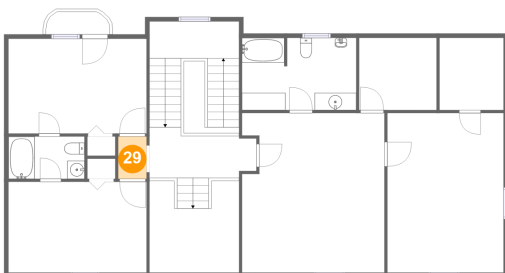
28 Floor 3 - Bath



Dimensions: 13'2" x 8'4"
Area: 109 sq. ft
Counted as Living Area:
Yes

Heated: Yes
Finished: Yes
Enclosed: Yes
Contiguous:
Yes
Permitted: Yes
Wet Space: Yes
Addition: No
Conversion: No

29 Floor 3 - Hall

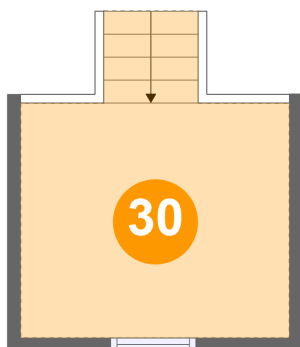


Dimensions: 3'3" x 4'11"
Area: 16 sq. ft
Counted as Living Area:
Yes

Heated: Yes
Finished: Yes
Enclosed: Yes
Contiguous:
Yes
Permitted: Yes
Wet Space: No
Addition: No
Conversion: No

**1710 Dawn Lane, Greater Deyerle, Roanoke,
Roanoke, Virginia, United States, 24018**

30 Floor 4 - Loft



Dimensions: 10'4" x 9'1"
Area: 107 sq. ft
Counted as Living Area:
Yes

Heated: Yes
Finished: Yes
Enclosed: Yes
Contiguous:
Yes
Permitted: Yes
Wet Space: No
Addition: No
Conversion: No