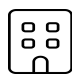




**416 Settlers Village Circle, Cranberry Township,
Pennsylvania 16066, United States**





Property Summary


 **3** floors

 **4** bedrooms

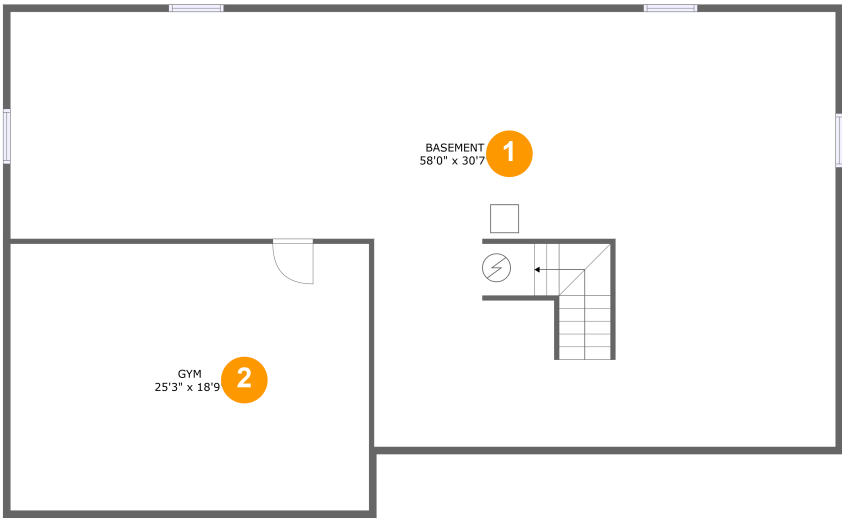
 **3** bathrooms

 **6,058** total sqft

 **1** garages

 **3,069** Gross Living Area sqft

**416 Settlers Village Circle, Cranberry Township,
Pennsylvania 16066, United States**

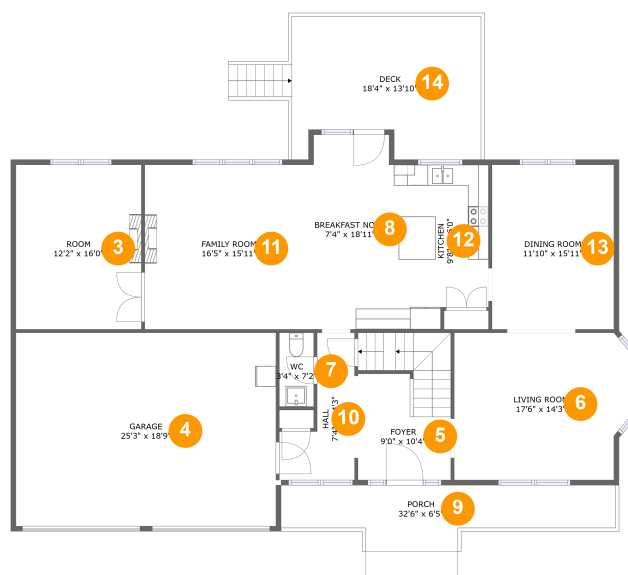


Room Dimensions

Floor 1 **Total sqft: 1983** **Living area: 0**

#	Room name	Dimensions	Area (sqft)	Counted as Living Area
1	Basement	58'0" x 30'7"	1402 sq. ft	No
2	Gym	25'3" x 18'9"	474 sq. ft	No

416 Settlers Village Circle, Cranberry Township, Pennsylvania 16066, United States



Room Dimensions

Floor 2

Total sqft: 2409

Living area: 1525

#	Room name	Dimensions	Area (sqft)	Counted as Living Area
3	Room	12'2" x 16'0"	194 sq. ft	Yes
4	Garage	25'3" x 18'9"	474 sq. ft	No
5	Foyer	9'0" x 10'4"	127 sq. ft	Yes
6	Living Room	17'6" x 14'3"	236 sq. ft	Yes
7	Wc	3'4" x 7'2"	24 sq. ft	Yes
8	Breakfast Nook	7'4" x 18'11"	138 sq. ft	Yes
9	Porch	32'6" x 6'5"	155 sq. ft	No
10	Hall	7'4" x 14'3"	69 sq. ft	Yes
11	Family Room	16'5" x 15'11"	262 sq. ft	Yes
12	Kitchen	9'8" x 16'0"	144 sq. ft	Yes
13	Dining Room	11'10" x 15'11"	189 sq. ft	Yes

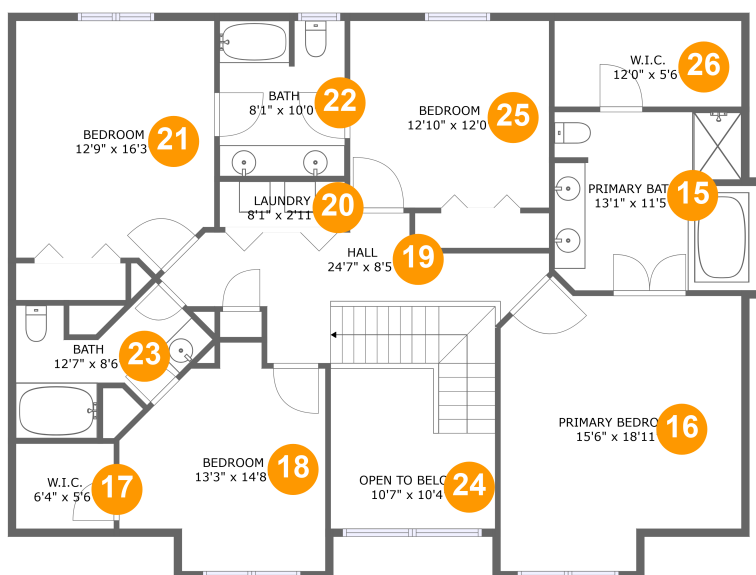
Scan captured on Tue, 07 May 2024 20:45:03 GMT

Information is calculated by CubiCasa technology; deemed highly reliable but not guaranteed.

**416 Settlers Village Circle, Cranberry Township,
Pennsylvania 16066, United States**

#	Room name	Dimensions	Area (sqft)	Counted as Living Area
14	Deck	18'4" x 13'10"	231 sq. ft	No

416 Settlers Village Circle, Cranberry Township, Pennsylvania 16066, United States



Room Dimensions

Floor 3

Total sqft: 1666

Living area: 1544

#	Room name	Dimensions	Area (sqft)	Counted as Living Area
15	Primary Bath	13'1" x 11'5"	142 sq. ft	Yes
16	Primary Bedroom	15'6" x 18'11"	255 sq. ft	Yes
17	W.i.c.	6'4" x 5'6"	35 sq. ft	Yes
18	Bedroom	13'3" x 14'8"	156 sq. ft	Yes
19	Hall	24'7" x 8'5"	178 sq. ft	Yes
20	Laundry	8'1" x 2'11"	24 sq. ft	No
21	Bedroom	12'9" x 16'3"	192 sq. ft	Yes
22	Bath	8'1" x 10'0"	80 sq. ft	Yes
23	Bath	12'7" x 8'6"	73 sq. ft	Yes
24	Open To Below	10'7" x 10'4"	92 sq. ft	No
25	Bedroom	12'10" x 12'0"	154 sq. ft	Yes

Scan captured on Tue, 07 May 2024 20:45:03 GMT

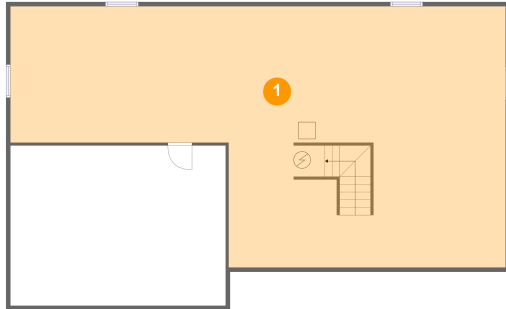
Information is calculated by CubiCasa technology; deemed highly reliable but not guaranteed.

**416 Settlers Village Circle, Cranberry Township,
Pennsylvania 16066, United States**

#	Room name	Dimensions	Area (sqft)	Counted as Living Area
26	W.i.c.	12'0" x 5'6"	66 sq. ft	Yes

416 Settlers Village Circle, Cranberry Township, Pennsylvania 16066, United States

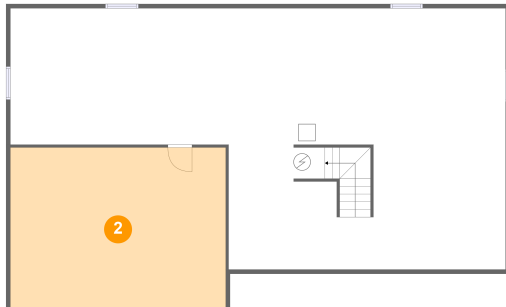
1 Floor 1 - Basement



Dimensions: 58'0" x 30'7"
Area: 1402 sq. ft
Counted as Living Area: No

Heated: No
Finished: No
Enclosed: Yes
Contiguous: Yes
Permitted: Yes
Wet Space: No
Addition: No
Conversion: No

2 Floor 1 - Gym

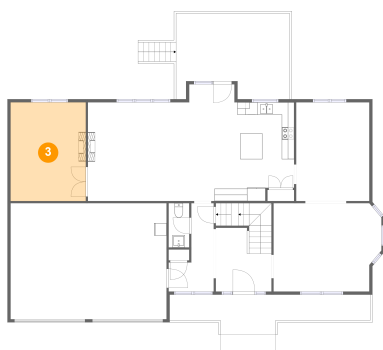


Dimensions: 25'3" x 18'9"
Area: 474 sq. ft
Counted as Living Area: No

Heated: Yes
Finished: Yes
Enclosed: Yes
Contiguous: No
Permitted: Yes
Wet Space: No
Addition: No
Conversion: No

416 Settlers Village Circle, Cranberry Township, Pennsylvania 16066, United States

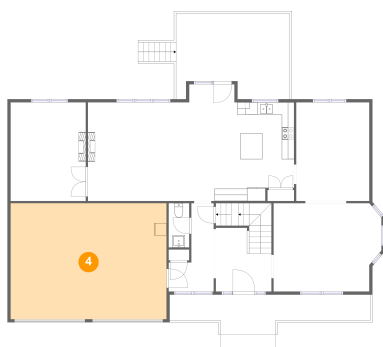
3 Floor 2 - Room



Dimensions: 12'2" x 16'0"
Area: 194 sq. ft
Counted as Living Area:
Yes

Heated: Yes
Finished: Yes
Enclosed: Yes
Contiguous:
Yes
Permitted: Yes
Wet Space: No
Addition: No
Conversion: No

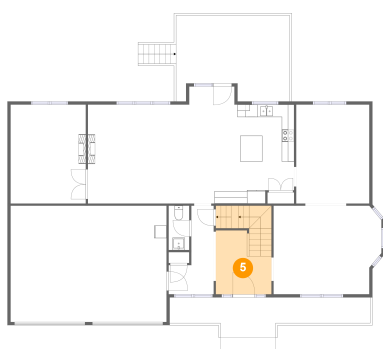
4 Floor 2 - Garage



Dimensions: 25'3" x 18'9"
Area: 474 sq. ft
Counted as Living Area: No

Heated: No
Finished: No
Enclosed: Yes
Contiguous: Yes
Permitted: Yes
Wet Space: No
Addition: No
Conversion: No

5 Floor 2 - Foyer

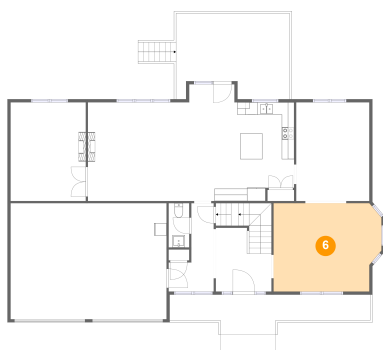


Dimensions: 9'0" x 10'4"
Area: 127 sq. ft
Counted as Living Area:
Yes

Heated: Yes
Finished: Yes
Enclosed: Yes
Contiguous:
Yes
Permitted: Yes
Wet Space: No
Addition: No
Conversion: No

416 Settlers Village Circle, Cranberry Township, Pennsylvania 16066, United States

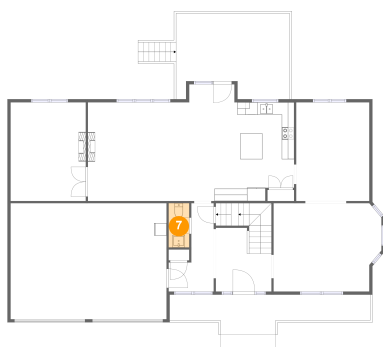
6 Floor 2 - Living Room



Dimensions: 17'6" x 14'3"
Area: 236 sq. ft
Counted as Living Area:
Yes

Heated: Yes
Finished: Yes
Enclosed: Yes
Contiguous:
Yes
Permitted: Yes
Wet Space: No
Addition: No
Conversion: No

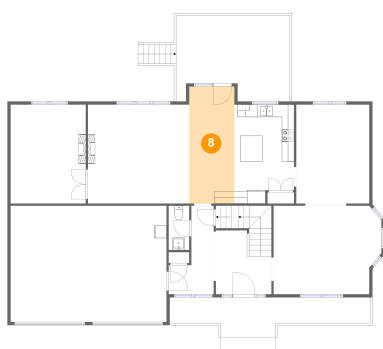
7 Floor 2 - Wc



Dimensions: 3'4" x 7'2"
Area: 24 sq. ft
Counted as Living Area:
Yes

Heated: Yes
Finished: Yes
Enclosed: Yes
Contiguous:
Yes
Permitted: Yes
Wet Space: Yes
Addition: No
Conversion: No

8 Floor 2 - Breakfast Nook

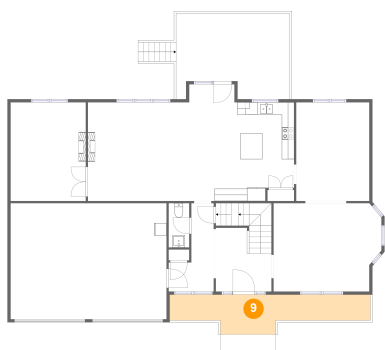


Dimensions: 7'4" x 18'11"
Area: 138 sq. ft
Counted as Living Area:
Yes

Heated: Yes
Finished: Yes
Enclosed: Yes
Contiguous:
Yes
Permitted: Yes
Wet Space: No
Addition: No
Conversion: No

416 Settlers Village Circle, Cranberry Township, Pennsylvania 16066, United States

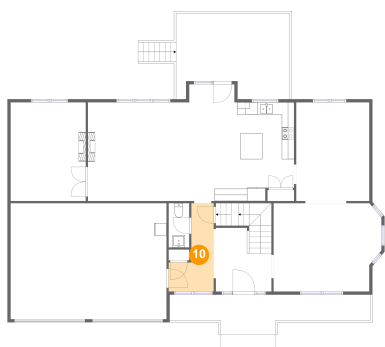
9 Floor 2 - Porch



Dimensions: 32'6" x 6'5"
Area: 155 sq. ft
Counted as Living Area: No

Heated: No
Finished: Yes
Enclosed: No
Contiguous: Yes
Permitted: Yes
Wet Space: No
Addition: No
Conversion: No

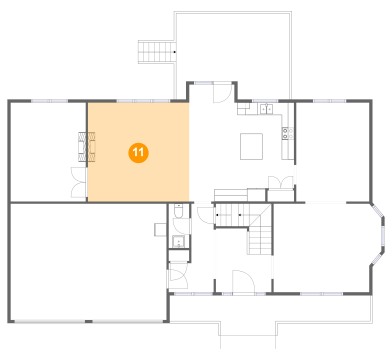
10 Floor 2 - Hall



Dimensions: 7'4" x 14'3"
Area: 69 sq. ft
Counted as Living Area: Yes

Heated: Yes
Finished: Yes
Enclosed: Yes
Contiguous: Yes
Permitted: Yes
Wet Space: No
Addition: No
Conversion: No

11 Floor 2 - Family Room

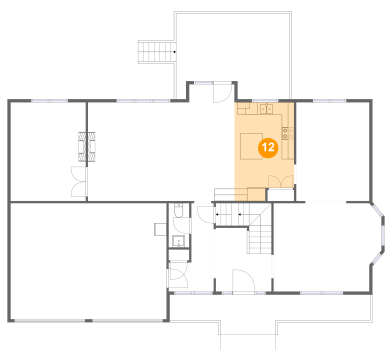


Dimensions: 16'5" x 15'11"
Area: 262 sq. ft
Counted as Living Area: Yes

Heated: Yes
Finished: Yes
Enclosed: Yes
Contiguous: Yes
Permitted: Yes
Wet Space: No
Addition: No
Conversion: No

416 Settlers Village Circle, Cranberry Township, Pennsylvania 16066, United States

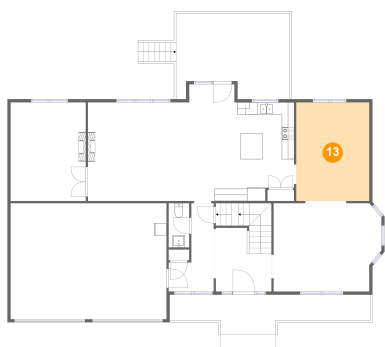
12 Floor 2 - Kitchen



Dimensions: 9'8" x 16'0"
Area: 144 sq. ft
Counted as Living Area:
Yes

Heated: Yes
Finished: Yes
Enclosed: Yes
Contiguous:
Yes
Permitted: Yes
Wet Space: No
Addition: No
Conversion: No

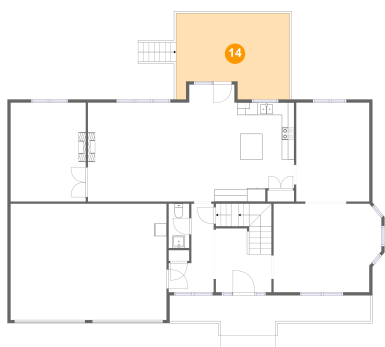
13 Floor 2 - Dining Room



Dimensions: 11'10" x 15'11"
Area: 189 sq. ft
Counted as Living Area:
Yes

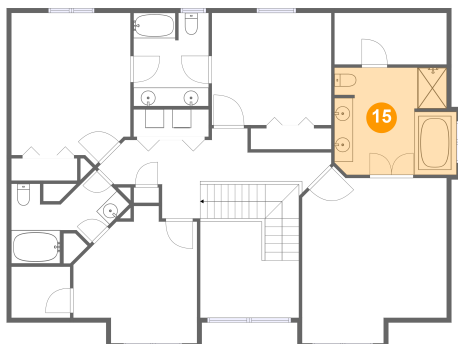
Heated: Yes
Finished: Yes
Enclosed: Yes
Contiguous:
Yes
Permitted: Yes
Wet Space: No
Addition: No
Conversion: No

14 Floor 2 - Deck



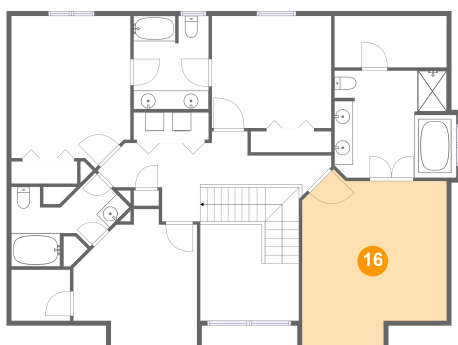
Dimensions: 18'4" x 13'10"
Area: 231 sq. ft
Counted as Living Area: No

Heated: No
Finished: Yes
Enclosed: No
Contiguous: Yes
Permitted: Yes
Wet Space: No
Addition: No
Conversion: No

**416 Settlers Village Circle, Cranberry Township,
Pennsylvania 16066, United States****15 Floor 3 - Primary Bath**

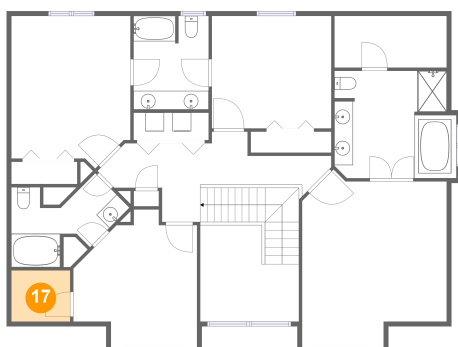
Dimensions: 13'1" x 11'5"
Area: 142 sq. ft
Counted as Living Area:
Yes

Heated: Yes
Finished: Yes
Enclosed: Yes
Contiguous:
Yes
Permitted: Yes
Wet Space: Yes
Addition: No
Conversion: No

16 Floor 3 - Primary Bedroom

Dimensions: 15'6" x 18'11"
Area: 255 sq. ft
Counted as Living Area:
Yes

Heated: Yes
Finished: Yes
Enclosed: Yes
Contiguous:
Yes
Permitted: Yes
Wet Space: No
Addition: No
Conversion: No

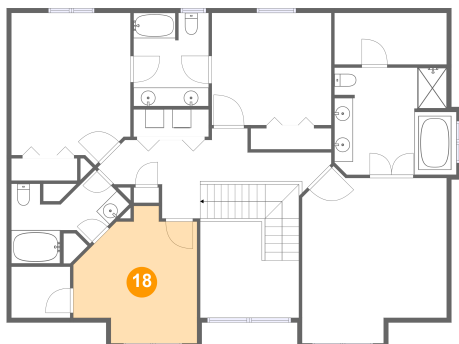
17 Floor 3 - W.i.c.

Dimensions: 6'4" x 5'6"
Area: 35 sq. ft
Counted as Living Area:
Yes

Heated: Yes
Finished: Yes
Enclosed: Yes
Contiguous:
Yes
Permitted: Yes
Wet Space: No
Addition: No
Conversion: No

416 Settlers Village Circle, Cranberry Township, Pennsylvania 16066, United States

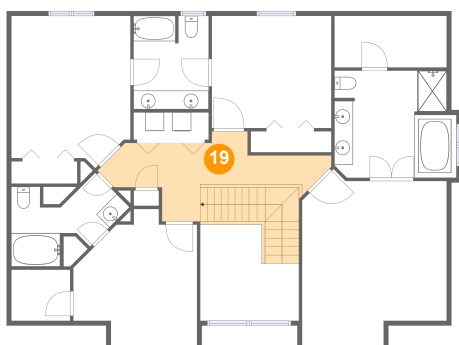
18 Floor 3 - Bedroom



Dimensions: 13'3" x 14'8"
Area: 156 sq. ft
Counted as Living Area:
Yes

Heated: Yes
Finished: Yes
Enclosed: Yes
Contiguous:
Yes
Permitted: Yes
Wet Space: No
Addition: No
Conversion: No

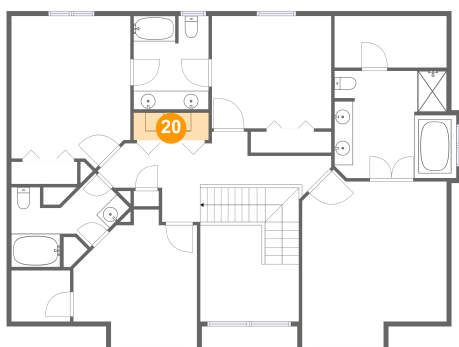
19 Floor 3 - Hall



Dimensions: 24'7" x 8'5"
Area: 178 sq. ft
Counted as Living Area:
Yes

Heated: Yes
Finished: Yes
Enclosed: Yes
Contiguous:
Yes
Permitted: Yes
Wet Space: No
Addition: No
Conversion: No

20 Floor 3 - Laundry

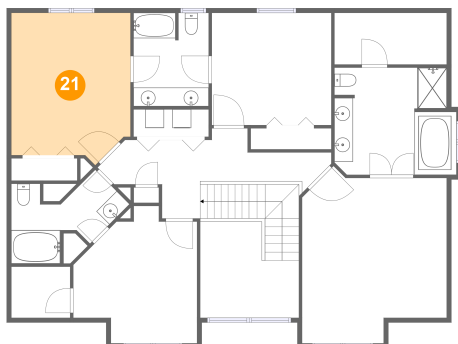


Dimensions: 8'1" x 2'11"
Area: 24 sq. ft
Counted as Living Area: No

Heated: Yes
Finished: Yes
Enclosed: Yes
Contiguous: Yes
Permitted: Yes
Wet Space: No
Addition: No
Conversion: No

416 Settlers Village Circle, Cranberry Township, Pennsylvania 16066, United States

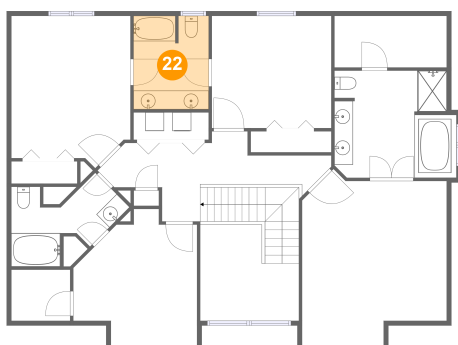
21 Floor 3 - Bedroom



Dimensions: 12'9" x 16'3"
Area: 192 sq. ft
Counted as Living Area:
Yes

Heated: Yes
Finished: Yes
Enclosed: Yes
Contiguous:
Yes
Permitted: Yes
Wet Space: No
Addition: No
Conversion: No

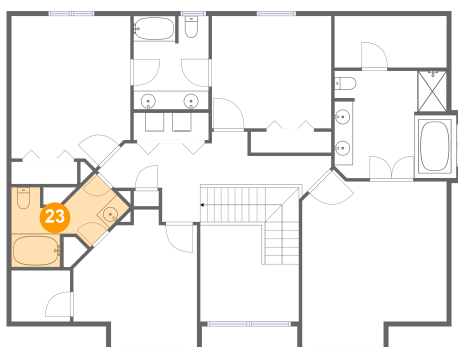
22 Floor 3 - Bath



Dimensions: 8'1" x 10'0"
Area: 80 sq. ft
Counted as Living Area:
Yes

Heated: Yes
Finished: Yes
Enclosed: Yes
Contiguous:
Yes
Permitted: Yes
Wet Space: Yes
Addition: No
Conversion: No

23 Floor 3 - Bath

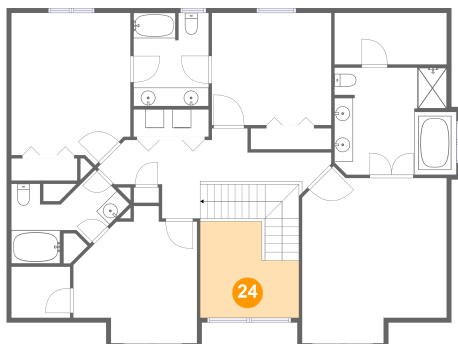


Dimensions: 12'7" x 8'6"
Area: 73 sq. ft
Counted as Living Area:
Yes

Heated: Yes
Finished: Yes
Enclosed: Yes
Contiguous:
Yes
Permitted: Yes
Wet Space: Yes
Addition: No
Conversion: No

416 Settlers Village Circle, Cranberry Township, Pennsylvania 16066, United States

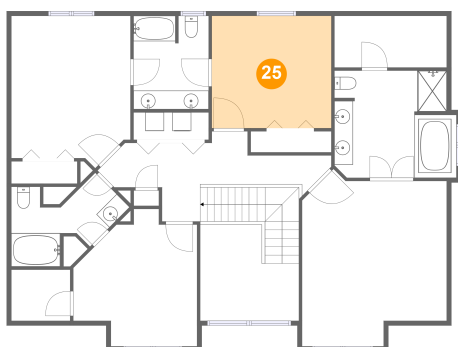
24 Floor 3 - Open To Below



Dimensions: 10'7" x 10'4"
Area: 92 sq. ft
Counted as Living Area: No

Heated: No
Finished: No
Enclosed: No
Contiguous: Yes
Permitted: No
Wet Space: No
Addition: No
Conversion: No

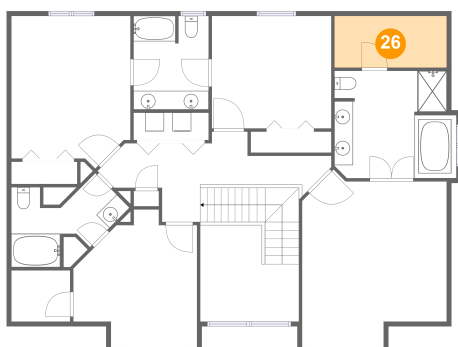
25 Floor 3 - Bedroom



Dimensions: 12'10" x 12'0"
Area: 154 sq. ft
Counted as Living Area: Yes

Heated: Yes
Finished: Yes
Enclosed: Yes
Contiguous: Yes
Permitted: Yes
Wet Space: No
Addition: No
Conversion: No

26 Floor 3 - W.i.c.



Dimensions: 12'0" x 5'6"
Area: 66 sq. ft
Counted as Living Area: Yes

Heated: Yes
Finished: Yes
Enclosed: Yes
Contiguous: Yes
Permitted: Yes
Wet Space: No
Addition: No
Conversion: No