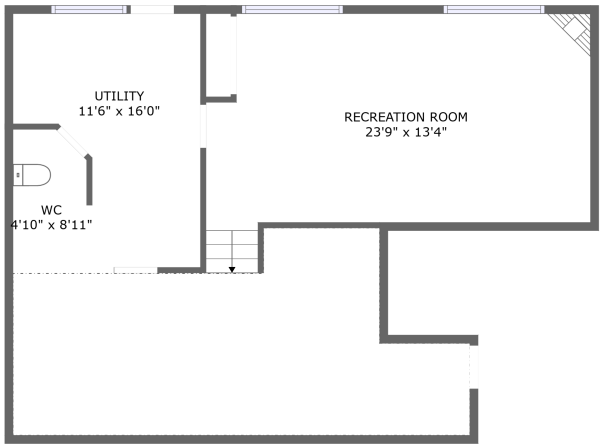
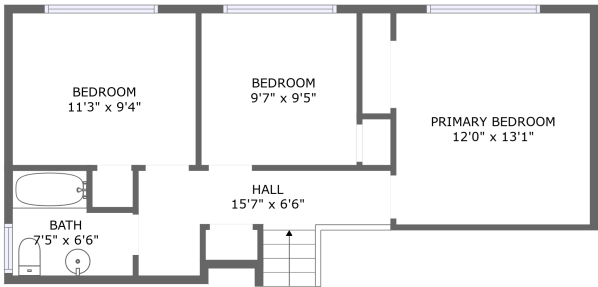


Home report

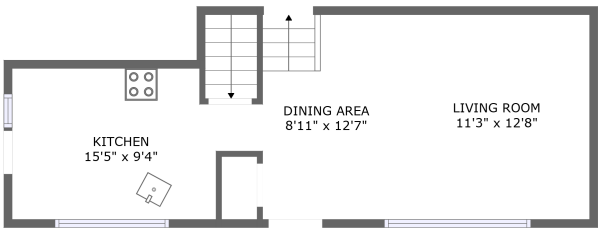
5455 Randolph Crescent, Elizabeth Gardens, Burlington, Halton County, Ontario, Canada, L7L 3C4



FLOOR 1



FLOOR 3



FLOOR 2

Total Area: 1378 sq. ft

Below Ground: 350 sq. ft, Floor 2: 460 sq. ft, Floor 3: 568 sq. ft

Excluded: Low Ceiling 308 sq. ft, Utility 153 sq. ft, Bath Toilet 45 sq. ft

Property summary

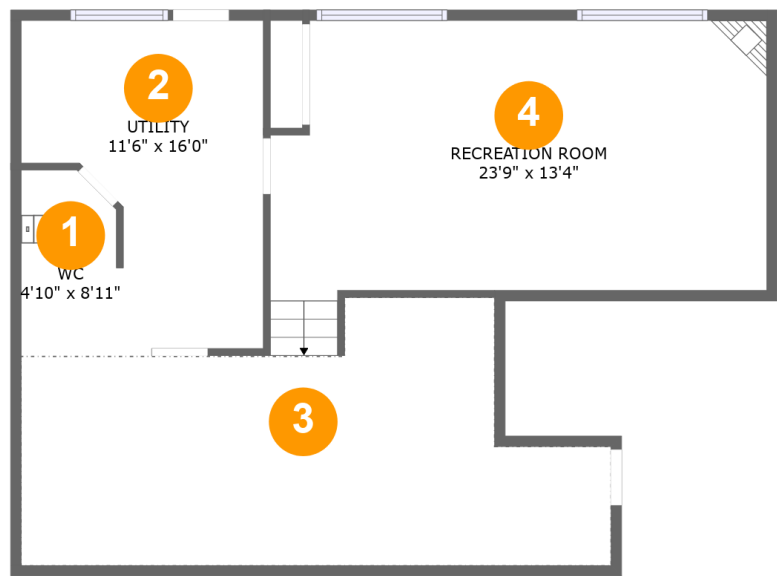
 **3** Floors

 **3** Bedrooms

 **1** Bathrooms

Home report

5455 Randolph Crescent, Elizabeth Gardens, Burlington, Halton County, Ontario, Canada, L7L 3C4



Room dimensions

Floor 1 Below ground Total:350sqft Excluded: 506sqft

| # | | Max Dimensions | sqft | Included |
|---|-----------------|----------------|------------|----------|
| 1 | WC | 4'10" x 8'11" | 40 sq. ft | No |
| 2 | Utility | 11'6" x 16'0" | 141 sq. ft | No |
| 3 | Crawl Space | 28'2" x 12'10" | 278 sq. ft | No |
| 4 | Recreation Room | 23'9" x 13'4" | 305 sq. ft | Yes |

Home report

5455 Randolph Crescent, Elizabeth Gardens, Burlington, Halton County, Ontario, Canada, L7L 3C4



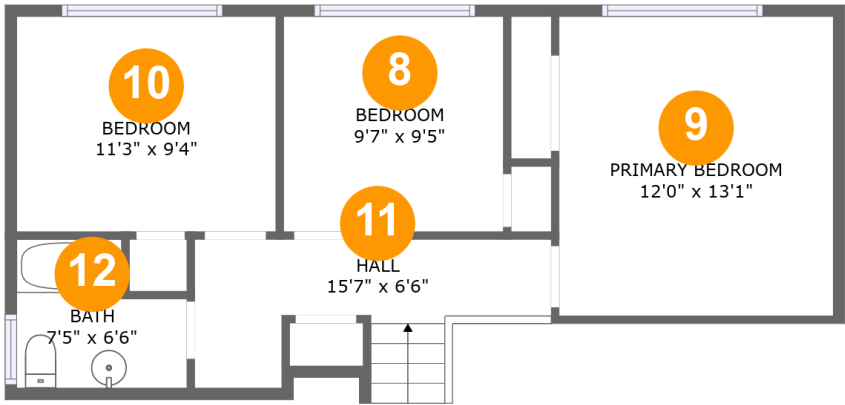
Room dimensions

Floor 2 Total:460sqft Excluded: 0sqft

| # | | Max Dimensions | sqft | Included |
|---|-------------|----------------|------------|----------|
| 5 | Dining Area | 8'11" x 12'7" | 112 sq. ft | Yes |
| 6 | Kitchen | 15'5" x 9'4" | 123 sq. ft | Yes |
| 7 | Living Room | 11'3" x 12'8" | 142 sq. ft | Yes |

Home report

5455 Randolph Crescent, Elizabeth Gardens, Burlington, Halton County, Ontario, Canada, L7L 3C4



Room dimensions

Floor 3 Total:568sqft Excluded: 0sqft

| # | | Max Dimensions | sqft | Included |
|----|-----------------|----------------|------------|----------|
| 8 | Bedroom | 9'7" x 9'5" | 90 sq. ft | Yes |
| 9 | Primary Bedroom | 12'0" x 13'1" | 156 sq. ft | Yes |
| 10 | Bedroom | 11'3" x 9'4" | 106 sq. ft | Yes |
| 11 | Hall | 15'7" x 6'6" | 76 sq. ft | Yes |
| 12 | Bath | 7'5" x 6'6" | 41 sq. ft | Yes |

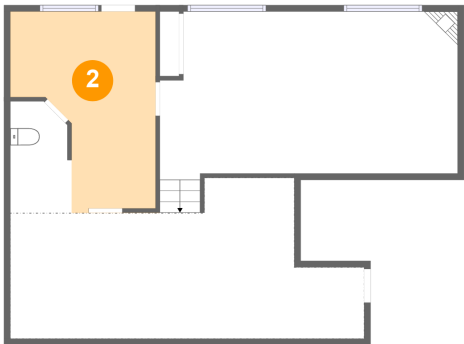
1 Floor 1 - WC



Max Dimensions: 4'10" x 8'11"
Calculated Area: 40 sq. ft
Included: No

Heated: Yes
Finished: No
Enclosed: Yes
Contiguous: Yes
Permitted: Yes
Wet space: No
Addition: No
Conversion: No

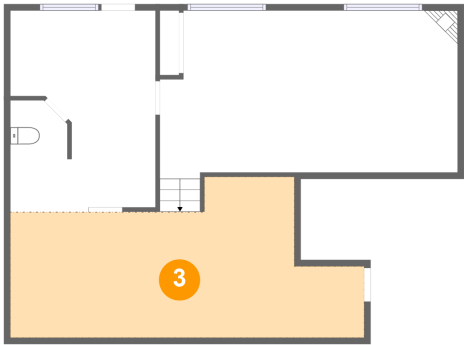
2 Floor 1 - Utility



Max Dimensions: 11'6" x 16'0"
Calculated Area: 141 sq. ft
Included: No

Heated: Yes
Finished: No
Enclosed: Yes
Contiguous: Yes
Permitted: Yes
Wet space: No
Addition: No
Conversion: No

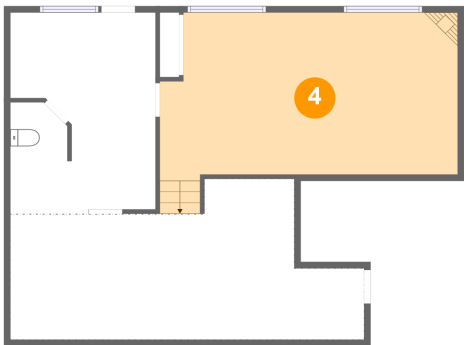
3 Floor 1 - Crawl Space



Max Dimensions: 28'2" x 12'10"
Calculated Area: 278 sq. ft
Included: No

Heated: No
Finished: No
Enclosed: No
Contiguous: Yes
Permitted: No
Wet space: No
Addition: No
Conversion: No

4 Floor 1 - Recreation Room



Max Dimensions: 23'9" x 13'4"
Calculated Area: 305 sq. ft
Included: Yes

Heated: Yes
Finished: Yes
Enclosed: Yes
Contiguous: Yes
Permitted: Yes
Wet space: No
Addition: No
Conversion: No

5 Floor 2 - Dining Area



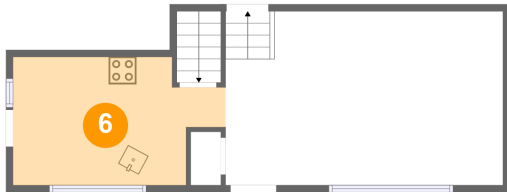
Max Dimensions: 8'11" x 12'7"
Calculated Area: 112 sq. ft
Included: Yes

Heated: Yes
Finished: Yes
Enclosed: Yes
Contiguous: Yes
Permitted: Yes
Wet space: No
Addition: No
Conversion: No

Home report

5455 Randolph Crescent, Elizabeth Gardens, Burlington, Halton County, Ontario, Canada, L7L 3C4

6 Floor 2 - Kitchen



Max Dimensions: 15'5" x 9'4"
Calculated Area: 123 sq. ft
Included: Yes

Heated: Yes
Finished: Yes
Enclosed: Yes
Contiguous: Yes
Permitted: Yes
Wet space: No
Addition: No
Conversion: No

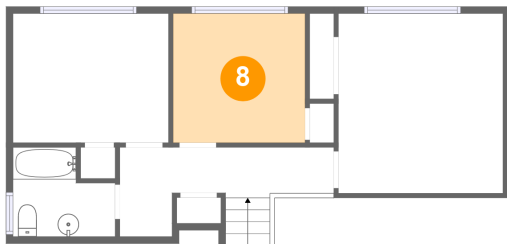
7 Floor 2 - Living Room



Max Dimensions: 11'3" x 12'8"
Calculated Area: 142 sq. ft
Included: Yes

Heated: Yes
Finished: Yes
Enclosed: Yes
Contiguous: Yes
Permitted: Yes
Wet space: No
Addition: No
Conversion: No

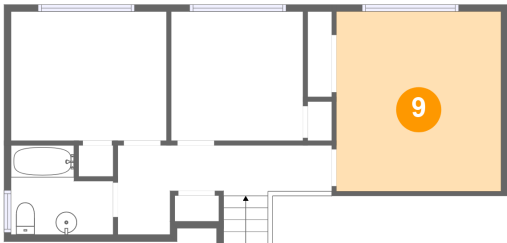
8 Floor 3 - Bedroom



Max Dimensions: 9'7" x 9'5"
Calculated Area: 90 sq. ft
Included: Yes

Heated: Yes
Finished: Yes
Enclosed: Yes
Contiguous: Yes
Permitted: Yes
Wet space: No
Addition: No
Conversion: No

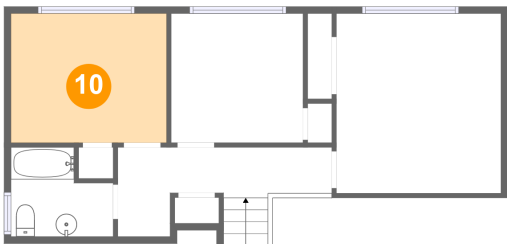
9 Floor 3 - Primary Bedroom



Max Dimensions: 12'0" x 13'1"
Calculated Area: 156 sq. ft
Included: Yes

Heated: Yes
Finished: Yes
Enclosed: Yes
Contiguous: Yes
Permitted: Yes
Wet space: No
Addition: No
Conversion: No

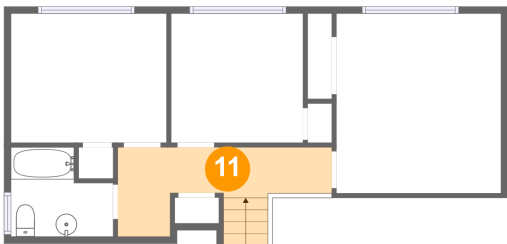
10 Floor 3 - Bedroom



Max Dimensions: 11'3" x 9'4"
Calculated Area: 106 sq. ft
Included: Yes

Heated: Yes
Finished: Yes
Enclosed: Yes
Contiguous: Yes
Permitted: Yes
Wet space: No
Addition: No
Conversion: No

11 Floor 3 - Hall

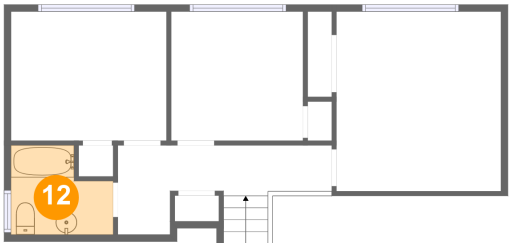


Max Dimensions: 15'7" x 6'6"
Calculated Area: 76 sq. ft
Included: Yes

Heated: Yes
Finished: Yes
Enclosed: Yes
Contiguous: Yes
Permitted: Yes
Wet space: No
Addition: No
Conversion: No

5455 Randolph Crescent, Elizabeth Gardens, Burlington, Halton County, Ontario, Canada, L7L 3C4

12 Floor 3 - Bath



Max Dimensions: 7'5" x 6'6"
Calculated Area: 41 sq. ft
Included: Yes

Heated: Yes
Finished: Yes
Enclosed: Yes
Contiguous: Yes
Permitted: Yes
Wet space: Yes
Addition: No
Conversion: No