


Home report

2723 Beulah Avenue, River Grove, Cook County,
Illinois, United States, 60171



Property summary

 **1** Garages


 **3** Bedrooms

 **2** Bathrooms

 **0** Half baths

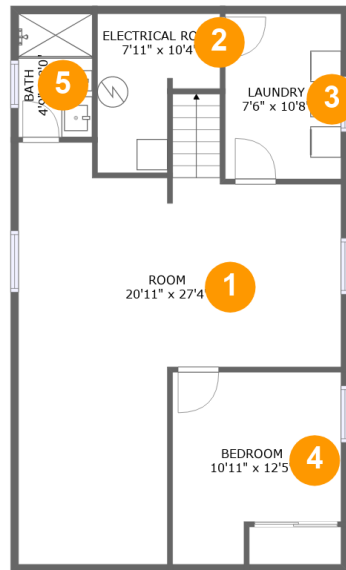
 **3** Floors

 **2,081**
Gross living
area sqft

 **2,809**
Total sqft

Home report

2723 Beulah Avenue, River Grove, Cook County,
Illinois, United States, 60171

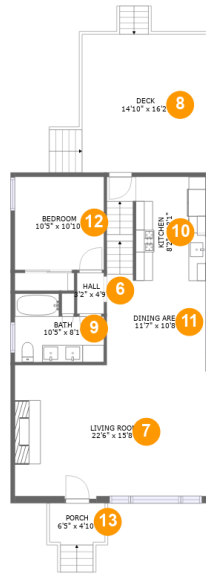


Room dimensions

Floor 1

Total sqft: 802 Living area: 735

#		Dimensions	sqft	Counted as living area
1	Room	20'11" x 27'4"	403 sq. ft	Yes
2	Electrical Room	7'11" x 10'4"	63 sq. ft	No
3	Laundry	7'6" x 10'8"	80 sq. ft	Yes
4	Bedroom	10'11" x 12'5"	118 sq. ft	Yes
5	Bath	4'9" x 8'0"	38 sq. ft	Yes



Room dimensions

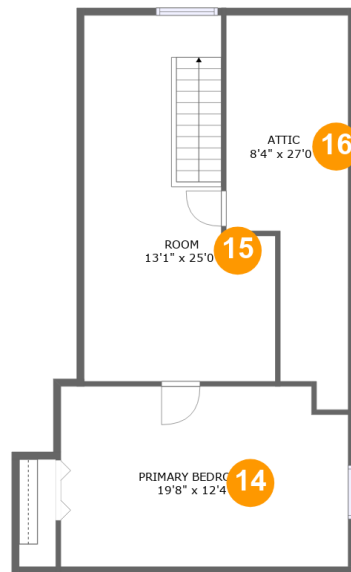
Floor 2

Total sqft: 1224 Living area: 911

#		Dimensions	sqft	Counted as living area
6	Hall	3'2" x 4'9"	15 sq. ft	Yes
7	Living Room	22'6" x 15'8"	347 sq. ft	Yes
8	Deck	14'10" x 16'2"	270 sq. ft	No
9	Bath	10'5" x 8'1"	70 sq. ft	Yes
10	Kitchen	8'2" x 12'1"	104 sq. ft	Yes
11	Dining Area	11'7" x 10'8"	153 sq. ft	Yes
12	Bedroom	10'5" x 10'10"	114 sq. ft	Yes
13	Porch	6'5" x 4'10"	43 sq. ft	No

Home report

2723 Beulah Avenue, River Grove, Cook County,
Illinois, United States, 60171



Room dimensions

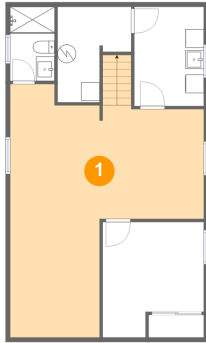
Floor 3

Total sqft: 783

Living area: 435

#		Dimensions	sqft	Counted as living area
14	Primary Bedroom	19'8" x 12'4"	176 sq. ft	Yes
15	Room	13'1" x 25'0"	217 sq. ft	Yes
16	Attic	8'4" x 27'0"	36 sq. ft	No

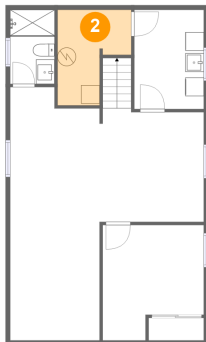
1 Floor 1 - Room



Dimensions: 20'11" x 27'4"
Area: 403 sq. ft
Counted as living area: Yes

Heated: Yes
Finished: Yes
Enclosed: Yes
Contiguous: Yes
Permitted: Yes
Wet space: No
Addition: No
Conversion: No

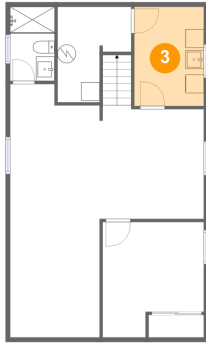
2 Floor 1 - Electrical Room



Dimensions: 7'11" x 10'4"
Area: 63 sq. ft
Counted as living area: No

Heated: No
Finished: No
Enclosed: Yes
Contiguous: Yes
Permitted: Yes
Wet space: No
Addition: No
Conversion: No

3 Floor 1 - Laundry



Dimensions: 7'6" x 10'8"
Area: 80 sq. ft
Counted as living area: Yes

Heated: Yes
Finished: Yes
Enclosed: Yes
Contiguous: Yes
Permitted: Yes
Wet space: No
Addition: No
Conversion: No

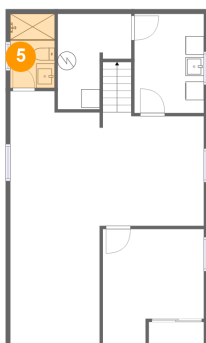
4 Floor 1 - Bedroom



Dimensions: 10'11" x 12'5"
Area: 118 sq. ft
Counted as living area: Yes

Heated: Yes
Finished: Yes
Enclosed: Yes
Contiguous: Yes
Permitted: Yes
Wet space: No
Addition: No
Conversion: No

5 Floor 1 - Bath



Dimensions: 4'9" x 8'0"
Area: 38 sq. ft
Counted as living area: Yes

Heated: Yes
Finished: Yes
Enclosed: Yes
Contiguous: Yes
Permitted: Yes
Wet space: Yes
Addition: No
Conversion: No

6 Floor 2 - Hall



Dimensions: 3'2" x 4'9"
Area: 15 sq. ft
Counted as living area: Yes

Heated: Yes
Finished: Yes
Enclosed: Yes
Contiguous: Yes
Permitted: Yes
Wet space: No
Addition: No
Conversion: No

7 Floor 2 - Living Room



Dimensions: 22'6" x 15'8"
Area: 347 sq. ft
Counted as living area: Yes

Heated: Yes
Finished: Yes
Enclosed: Yes
Contiguous: Yes
Permitted: Yes
Wet space: No
Addition: No
Conversion: No

8 Floor 2 - Deck



Dimensions: 14'10" x 16'2"
Area: 270 sq. ft
Counted as living area: No

Heated: No
Finished: Yes
Enclosed: No
Contiguous: Yes
Permitted: Yes
Wet space: No
Addition: No
Conversion: No

9 Floor 2 - Bath



Dimensions: 10'5" x 8'1"
Area: 70 sq. ft
Counted as living area: Yes

Heated: Yes
Finished: Yes
Enclosed: Yes
Contiguous: Yes
Permitted: Yes
Wet space: Yes
Addition: No
Conversion: No

10 Floor 2 - Kitchen



Dimensions: 8'2" x 12'1"
Area: 104 sq. ft
Counted as living area: Yes

Heated: Yes
Finished: Yes
Enclosed: Yes
Contiguous: Yes
Permitted: Yes
Wet space: No
Addition: No
Conversion: No

11 Floor 2 - Dining Area



Dimensions: 11'7" x 10'8"
Area: 153 sq. ft
Counted as living area: Yes

Heated: Yes
Finished: Yes
Enclosed: Yes
Contiguous: Yes
Permitted: Yes
Wet space: No
Addition: No
Conversion: No

12 Floor 2 - Bedroom



Dimensions: 10'5" x 10'10"
Area: 114 sq. ft
Counted as living area: Yes

Heated: Yes
Finished: Yes
Enclosed: Yes
Contiguous: Yes
Permitted: Yes
Wet space: No
Addition: No
Conversion: No

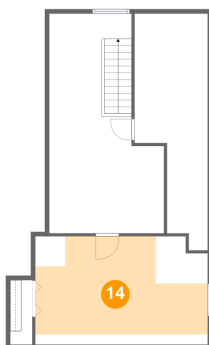
13 Floor 2 - Porch



Dimensions: 6'5" x 4'10"
Area: 43 sq. ft
Counted as living area: No

Heated: No
Finished: Yes
Enclosed: No
Contiguous: Yes
Permitted: Yes
Wet space: No
Addition: No
Conversion: No

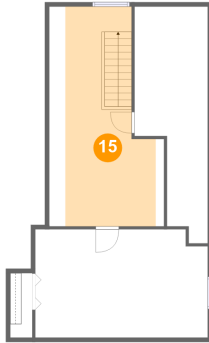
14 Floor 3 - Primary Bedroom



Dimensions: 19'8" x 12'4"
Area: 176 sq. ft
Counted as living area: Yes

Heated: Yes
Finished: Yes
Enclosed: Yes
Contiguous: Yes
Permitted: Yes
Wet space: No
Addition: No
Conversion: No

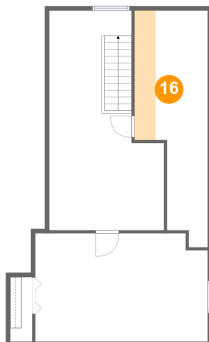
15 Floor 3 - Room



Dimensions: 13'1" x 25'0"
Area: 217 sq. ft
Counted as living area: Yes

Heated: Yes
Finished: Yes
Enclosed: Yes
Contiguous: Yes
Permitted: Yes
Wet space: No
Addition: No
Conversion: No

16 Floor 3 - Attic



Dimensions: 8'4" x 27'0"
Area: 36 sq. ft
Counted as living area: No

Heated: No
Finished: No
Enclosed: Yes
Contiguous: Yes
Permitted: Yes
Wet space: No
Addition: No
Conversion: No