

Home report

46th Avenue 8
Isle of Palms

Highlights



1 Kitchen



3 Living room



5 Bedroom



3 Bath



29 Doors



39 Windows

Nearby services Data source: Google Maps



Ocean Blvd / 14th Ave, 2.2 mi



Target Grocery, 4.2 mi



MUSC Children's Health X-Ray Services at Specialty Care - Mt Pleasant, 4.7 mi



Ivybrook Academy, 4.0 mi

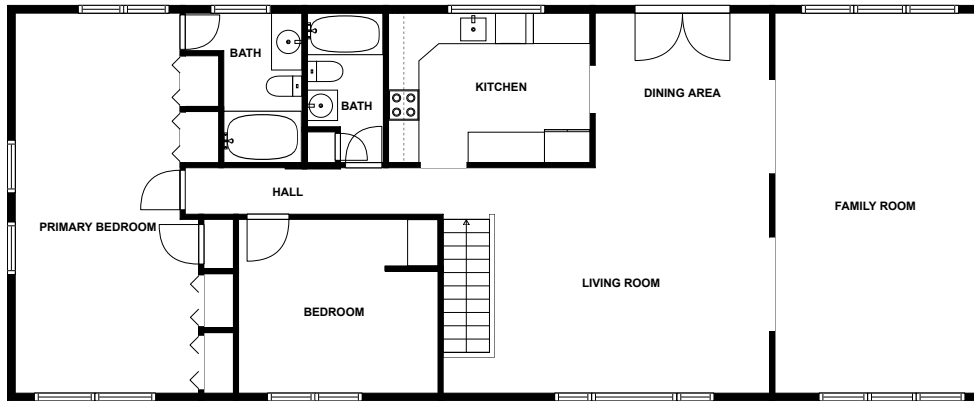


Islander 71 Fish House and Deck Bar, 0.6 mi

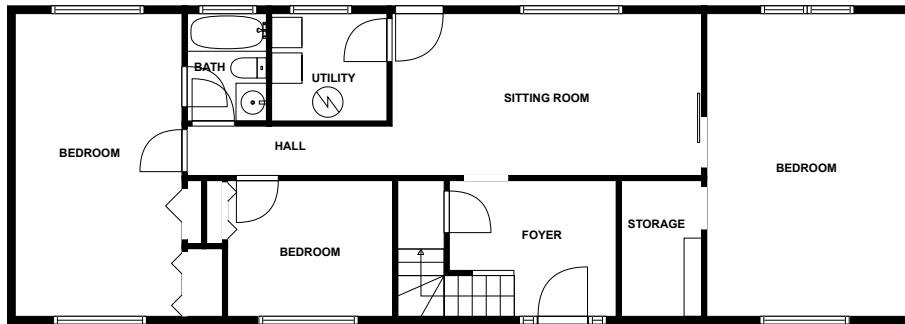


Oervind Currency Systems, Inc., 4.8 mi

Floor plan



FLOOR 2



FLOOR 1

MEASUREMENTS ARE CALCULATED BY CUBICASA TECHNOLOGY. DEEMED HIGHLY RELIABLE BUT NOT GUARANTEED.

Appendix 1: Data sheet

Bedroom - 5	Bedroom - Master - 1	Storage - 1
Utility - 1	Bath - 3	Entry - 1
Entry - Foyer - 1	LivingRoom - 3	LivingRoom - Sitting - 1
LivingRoom - Family - 1	Hall - 2	Kitchen - 1
Dining - 1	Dining - Open - 1	