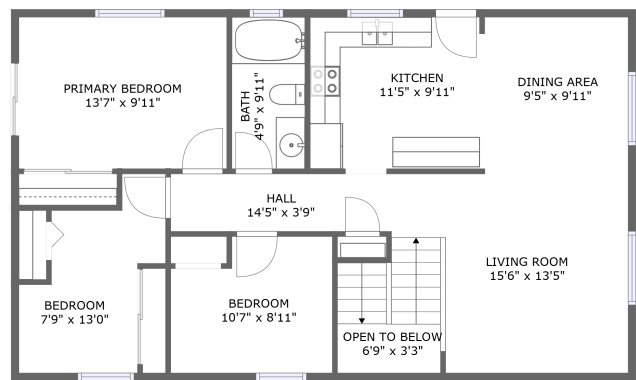
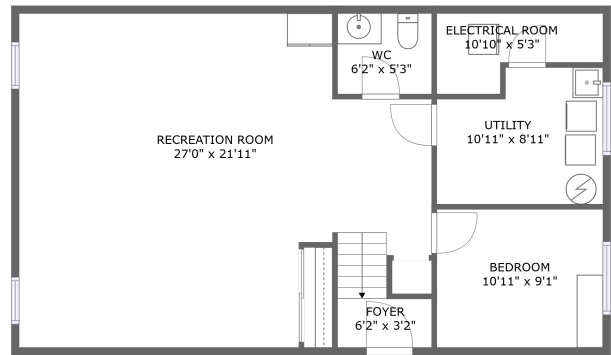


Home report

51 Coyle Crescent,Peterborough,ON,CA




FLOOR 2




FLOOR 1


Property summary




0
Garages



4
Bedrooms




1
Bathrooms



1
Half baths



2
Floors



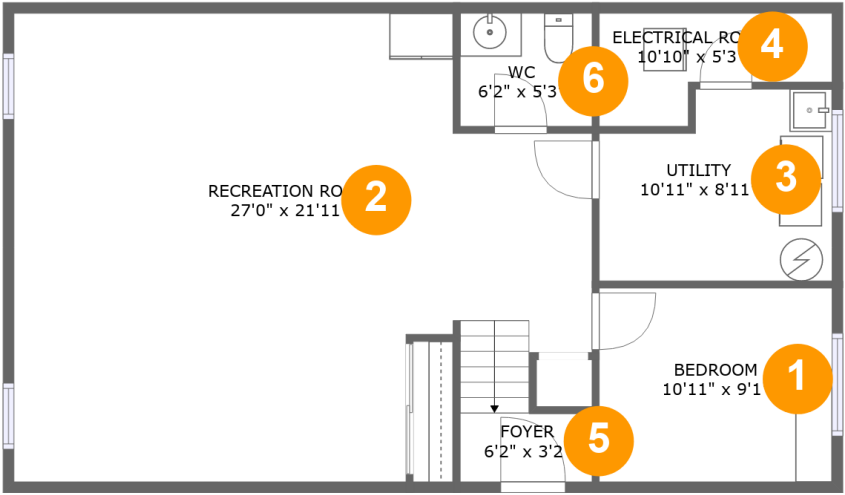
1,698
Gross living
area sqft



1,893
Total sqft

Home report

51 Coyle Crescent,Peterborough,ON,CA



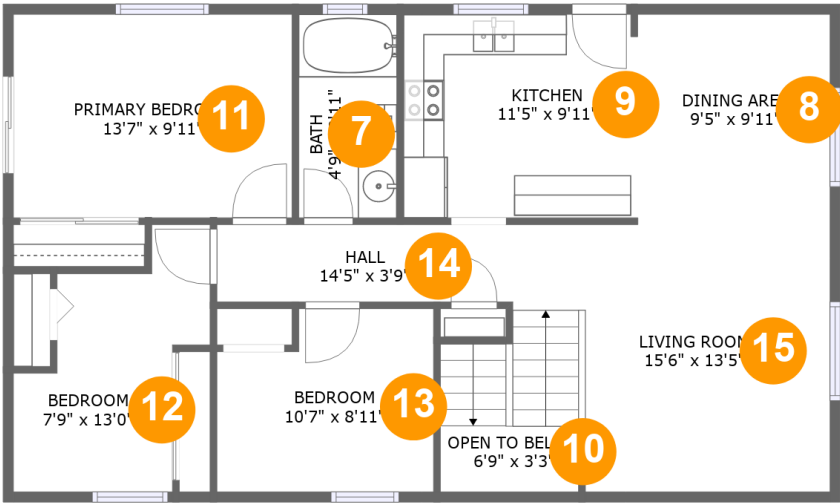
Room dimensions

Floor 1 Total sqft: 898 Living area: 750

#		Dimensions	sqft	Counted as living area
1	Bedroom	10'11" x 9'1"	98 sq. ft	Yes
2	Recreation Room	27'0" x 21'11"	500 sq. ft	Yes
3	Utility	10'11" x 8'11"	88 sq. ft	No
4	Electrical Room	10'10" x 5'3"	44 sq. ft	No
5	Foyer	6'2" x 3'2"	29 sq. ft	Yes
6	WC	6'2" x 5'3"	33 sq. ft	Yes

Home report

51 Coyle Crescent,Peterborough,ON,CA

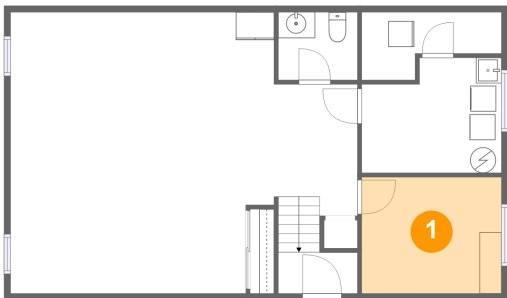


Room dimensions

Floor 2 Total sqft: 995 Living area: 948

#		Dimensions	sqft	Counted as living area
7	Bath	4'9" x 9'11"	48 sq. ft	Yes
8	Dining Area	9'5" x 9'11"	93 sq. ft	Yes
9	Kitchen	11'5" x 9'11"	113 sq. ft	Yes
10	Open To Below	6'9" x 3'3"	43 sq. ft	No
11	Primary Bedroom	13'7" x 9'11"	135 sq. ft	Yes
12	Bedroom	7'9" x 13'0"	86 sq. ft	Yes
13	Bedroom	10'7" x 8'11"	86 sq. ft	Yes
14	Hall	14'5" x 3'9"	55 sq. ft	Yes
15	Living Room	15'6" x 13'5"	187 sq. ft	Yes

1 Floor 1 - Bedroom



Dimensions: 10'11" x 9'1"
Area: 98 sq. ft
Counted as living area: Yes

Heated: Yes
Finished: Yes
Enclosed: Yes
Contiguous: Yes
Permitted: Yes
Wet space: No
Addition: No
Conversion: No

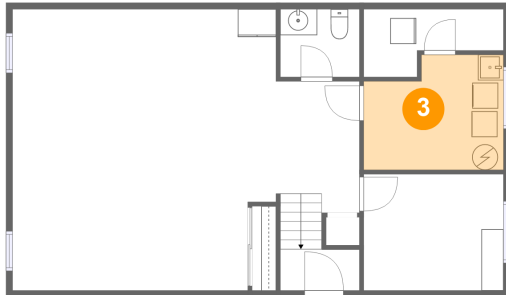
2 Floor 1 - Recreation Room



Dimensions: 27'0" x 21'11"
Area: 500 sq. ft
Counted as living area: Yes

Heated: Yes
Finished: Yes
Enclosed: Yes
Contiguous: Yes
Permitted: Yes
Wet space: No
Addition: No
Conversion: No

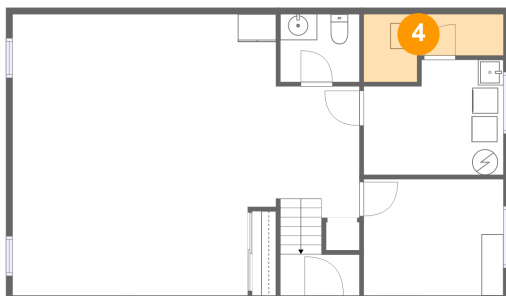
3 Floor 1 - Utility



Dimensions: 10'11" x 8'11"
Area: 88 sq. ft
Counted as living area: No

Heated: Yes
Finished: No
Enclosed: Yes
Contiguous: Yes
Permitted: Yes
Wet space: No
Addition: No
Conversion: No

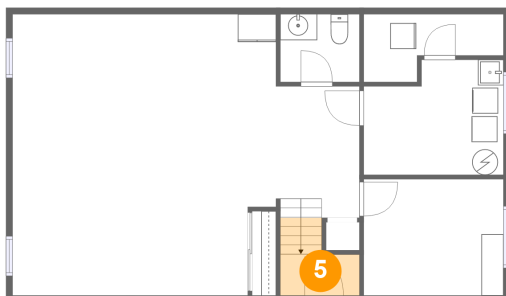
4 Floor 1 - Electrical Room



Dimensions: 10'10" x 5'3"
Area: 44 sq. ft
Counted as living area: No

Heated: No
Finished: No
Enclosed: Yes
Contiguous: Yes
Permitted: Yes
Wet space: No
Addition: No
Conversion: No

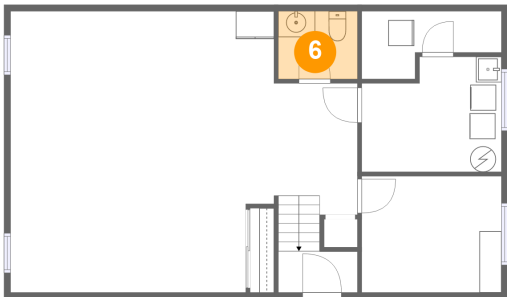
5 Floor 1 - Foyer



Dimensions: 6'2" x 3'2"
Area: 29 sq. ft
Counted as living area: Yes

Heated: Yes
Finished: Yes
Enclosed: Yes
Contiguous: Yes
Permitted: Yes
Wet space: No
Addition: No
Conversion: No

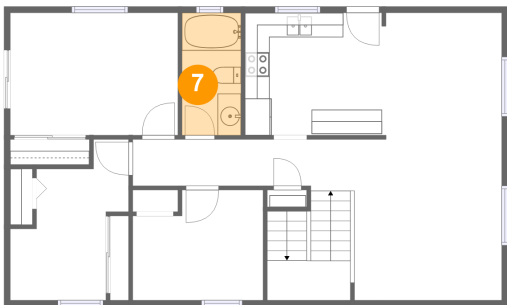
6 Floor 1 - WC



Dimensions: 6'2" x 5'3"
Area: 33 sq. ft
Counted as living area: Yes

Heated: Yes
Finished: Yes
Enclosed: Yes
Contiguous: Yes
Permitted: Yes
Wet space: Yes
Addition: No
Conversion: No

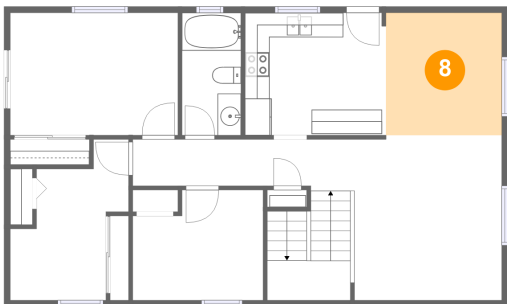
7 Floor 2 - Bath



Dimensions: 4'9" x 9'11"
Area: 48 sq. ft
Counted as living area: Yes

Heated: Yes
Finished: Yes
Enclosed: Yes
Contiguous: Yes
Permitted: Yes
Wet space: Yes
Addition: No
Conversion: No

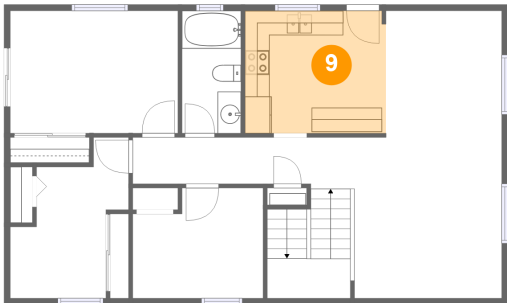
8 Floor 2 - Dining Area



Dimensions: 9'5" x 9'11"
Area: 93 sq. ft
Counted as living area: Yes

Heated: Yes
Finished: Yes
Enclosed: Yes
Contiguous: Yes
Permitted: Yes
Wet space: No
Addition: No
Conversion: No

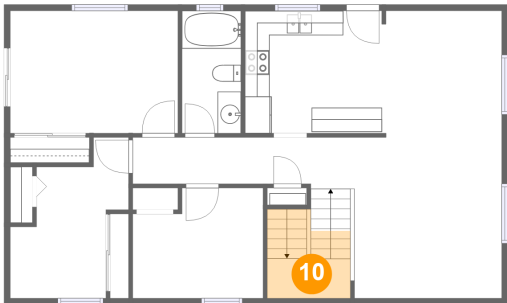
9 Floor 2 - Kitchen



Dimensions: 11'5" x 9'11"
Area: 113 sq. ft
Counted as living area: Yes

Heated: Yes
Finished: Yes
Enclosed: Yes
Contiguous: Yes
Permitted: Yes
Wet space: No
Addition: No
Conversion: No

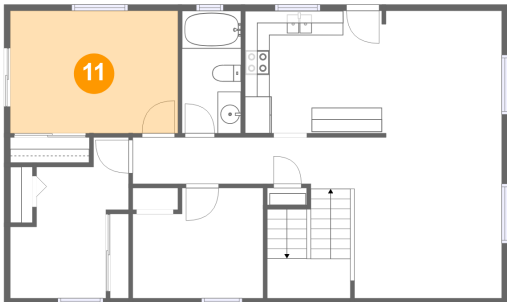
10 Floor 2 - Open To Below



Dimensions: 6'9" x 3'3"
Area: 43 sq. ft
Counted as living area: No

Heated: No
Finished: No
Enclosed: No
Contiguous: Yes
Permitted: No
Wet space: No
Addition: No
Conversion: No

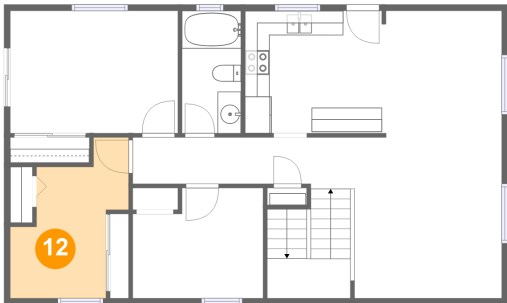
11 Floor 2 - Primary Bedroom



Dimensions: 13'7" x 9'11"
Area: 135 sq. ft
Counted as living area: Yes

Heated: Yes
Finished: Yes
Enclosed: Yes
Contiguous: Yes
Permitted: Yes
Wet space: No
Addition: No
Conversion: No

12 Floor 2 - Bedroom



Dimensions: 7'9" x 13'0"
Area: 86 sq. ft
Counted as living area: Yes

Heated: Yes
Finished: Yes
Enclosed: Yes
Contiguous: Yes
Permitted: Yes
Wet space: No
Addition: No
Conversion: No

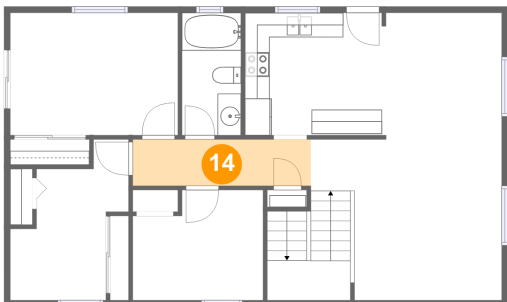
13 Floor 2 - Bedroom



Dimensions: 10'7" x 8'11"
Area: 86 sq. ft
Counted as living area: Yes

Heated: Yes
Finished: Yes
Enclosed: Yes
Contiguous: Yes
Permitted: Yes
Wet space: No
Addition: No
Conversion: No

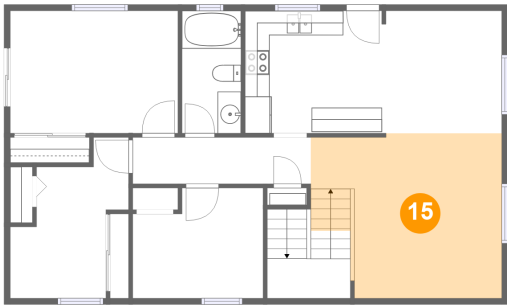
14 Floor 2 - Hall



Dimensions: 14'5" x 3'9"
Area: 55 sq. ft
Counted as living area: Yes

Heated: Yes
Finished: Yes
Enclosed: Yes
Contiguous: Yes
Permitted: Yes
Wet space: No
Addition: No
Conversion: No

15 Floor 2 - Living Room



Dimensions: 15'6" x 13'5"
Area: 187 sq. ft
Counted as living area: Yes

Heated: Yes
Finished: Yes
Enclosed: Yes
Contiguous: Yes
Permitted: Yes
Wet space: No
Addition: No
Conversion: No