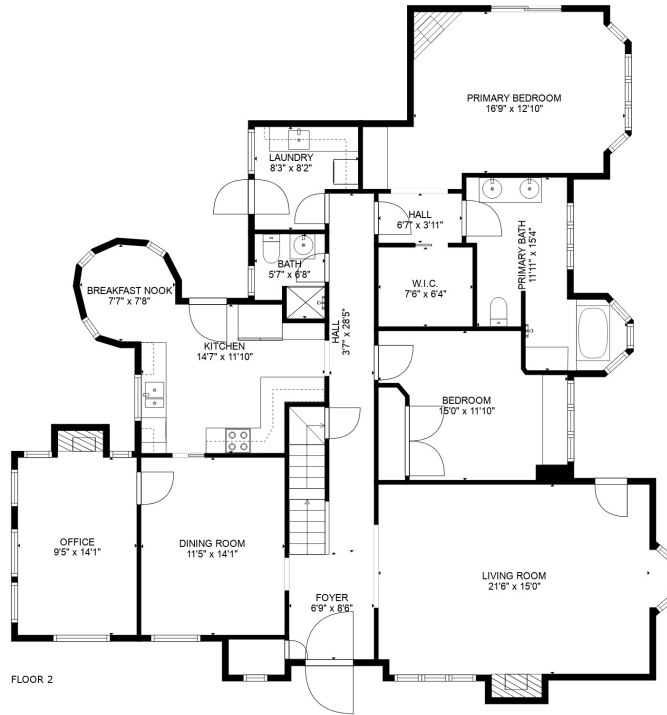
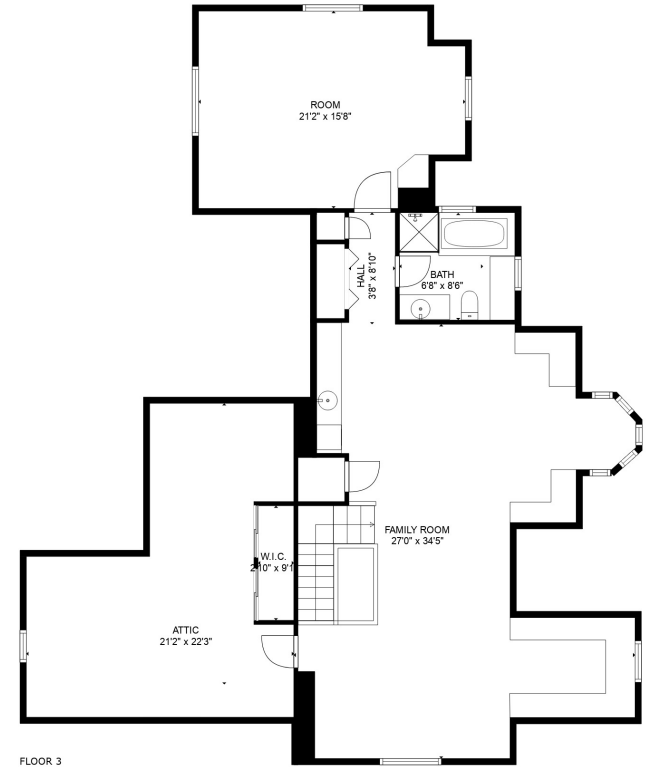


FLOOR 1



FLOOR 2

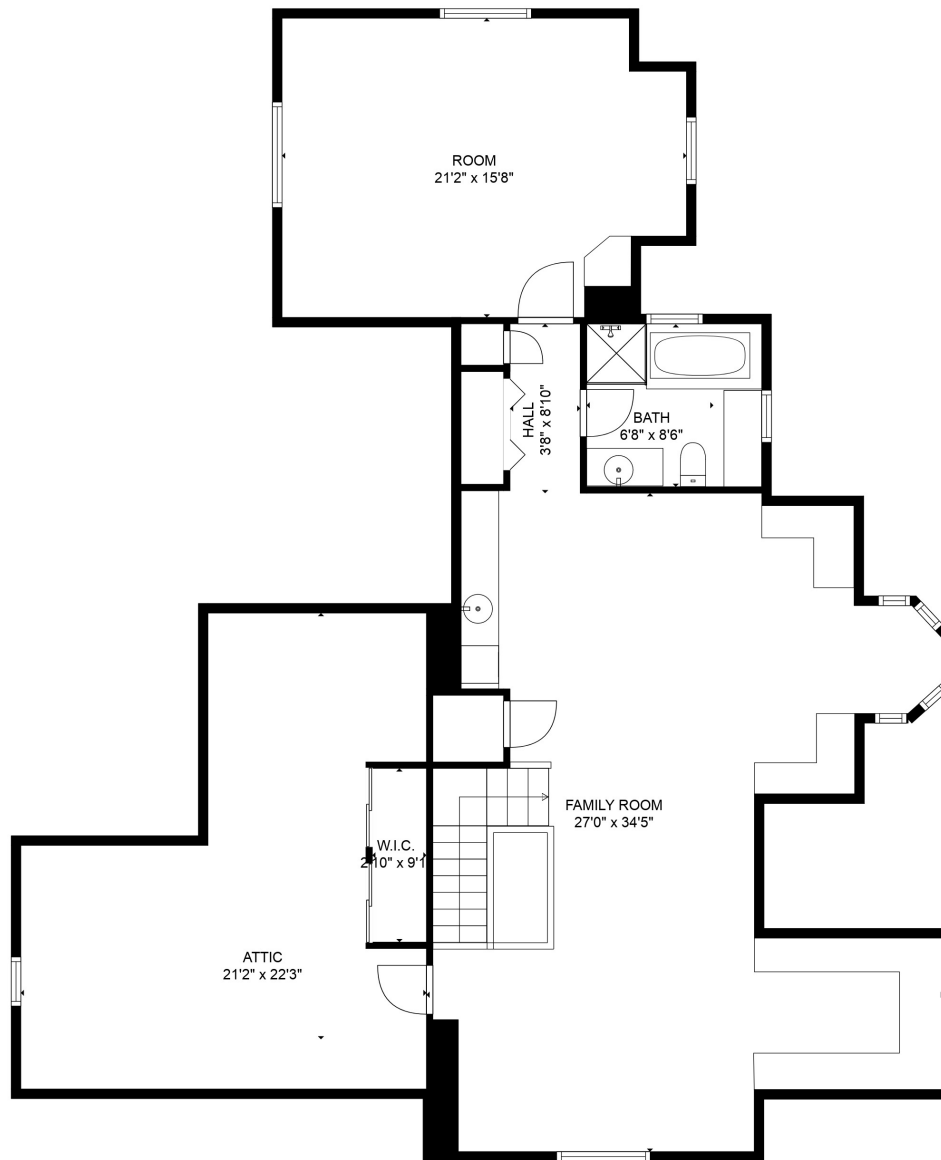


FLOOR 3

**TOTAL: 3491 sq. ft**

BELOW GROUND: 846 sq. ft, FLOOR 2: 1785 sq. ft, FLOOR 3: 860 sq. ft  
 EXCLUDED AREAS: ELECTRICAL ROOM: 106 sq. ft, STORAGE: 182 sq. ft, BAY WINDOW: 7 sq. ft,  
 FIREPLACE: 11 sq. ft, LOW CEILING: 523 sq. ft, ATTIC: 239 sq. ft

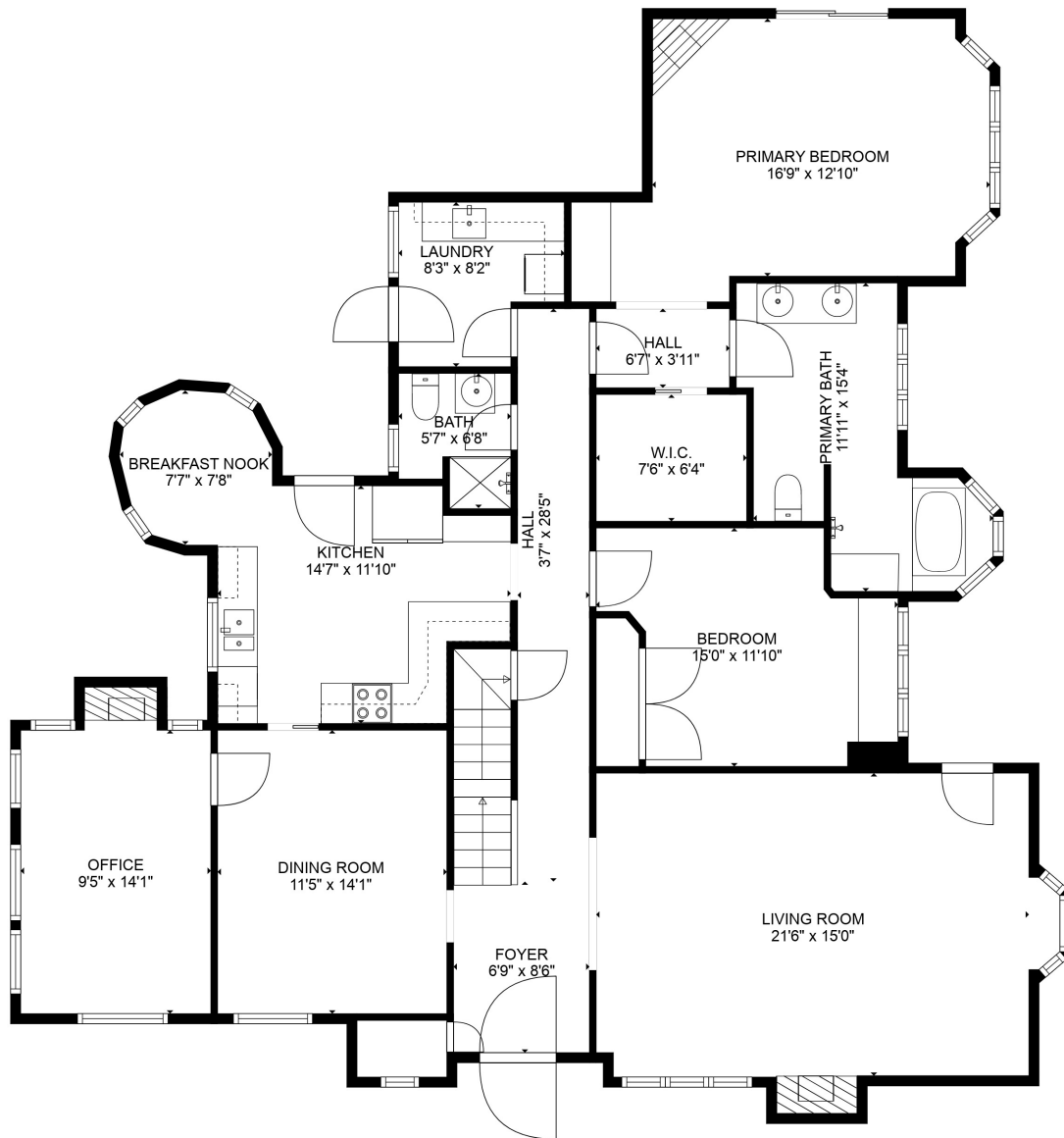
SIZES AND DIMENSIONS ARE APPROXIMATE, ACTUAL MAY VARY.



**TOTAL: 3491 sq. ft**

BELOW GROUND: 846 sq. ft, FLOOR 2: 1785 sq. ft, FLOOR 3: 860 sq. ft  
 EXCLUDED AREAS: ELECTRICAL ROOM: 106 sq. ft, STORAGE: 182 sq. ft, BAY WINDOW: 7 sq. ft,  
 FIREPLACE: 11 sq. ft, LOW CEILING: 522 sq. ft, ATTIC: 239 sq. ft

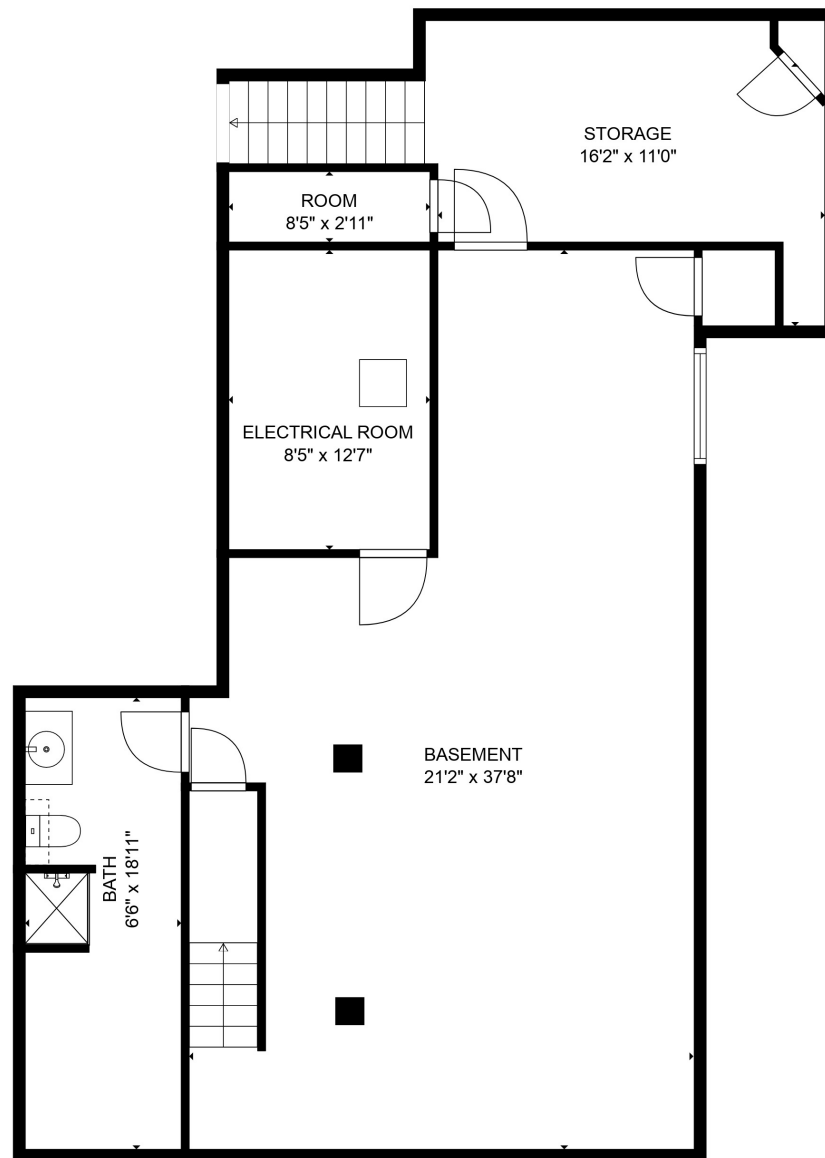
SIZES AND DIMENSIONS ARE APPROXIMATE, ACTUAL MAY VARY.



**TOTAL: 3491 sq. ft**

BELOW GROUND: 846 sq. ft, FLOOR 2: 1785 sq. ft, FLOOR 3: 860 sq. ft  
 EXCLUDED AREAS: ELECTRICAL ROOM: 106 sq. ft, STORAGE: 182 sq. ft, BAY WINDOW: 7 sq. ft,  
 FIREPLACE: 11 sq. ft, LOW CEILING: 522 sq. ft, ATTIC: 239 sq. ft

SIZES AND DIMENSIONS ARE APPROXIMATE, ACTUAL MAY VARY.



**TOTAL: 3491 sq. ft**

BELOW GROUND: 846 sq. ft, FLOOR 2: 1785 sq. ft, FLOOR 3: 860 sq. ft  
 EXCLUDED AREAS: ELECTRICAL ROOM: 106 sq. ft, STORAGE: 182 sq. ft, BAY WINDOW: 7 sq. ft,  
 FIREPLACE: 11 sq. ft, LOW CEILING: 522 sq. ft, ATTIC: 239 sq. ft

SIZES AND DIMENSIONS ARE APPROXIMATE, ACTUAL MAY VARY.