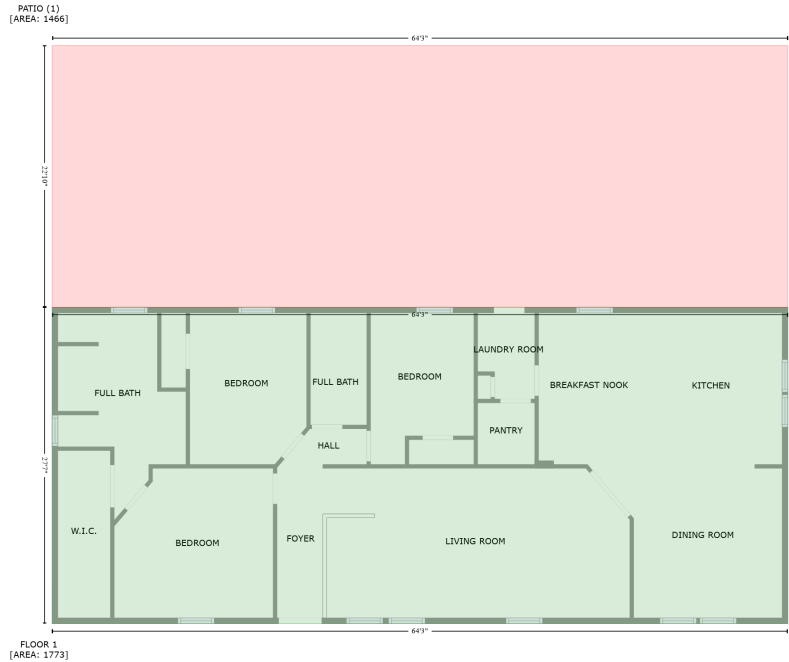
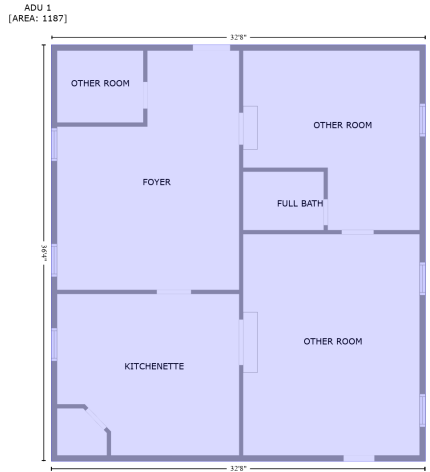


1200 Massey Road, Pilot Point, Denton County, Texas, United States, 76258

Gross Living Area: 1773 sq. ft



Space	Area (sq. ft)	Calculation <small>Coordinate Polygon Area Algorithm using inches</small>
FLOOR 1 (Living area)	1773	$-((772.5 + 772.5) * (839.3 - 1170.6) + (772.5 + 1.9) * (1170.6 - 1170.6) + (1.9 + 1.9) * (1170.6 - 839.3) + (1.9 + 772.5) * (839.3 - 839.3)) * 0.5 * 0.00694$
ADU 1 (Living area)	1187	$-((522 + 522) * (5 - 441) + (522 + 130) * (441 - 441) + (130 + 130) * (441 - 5) + (130 + 522) * (5 - 5)) * 0.5 * 0.00694$
PATIO (Non-living area)	1466	$-((772.5 + 772.5) * (565.4 - 839.3) + (772.5 + 1.9) * (839.3 - 839.3) + (1.9 + 1.9) * (839.3 - 565.4) + (1.9 + 772.5) * (565.4 - 565.4)) * 0.5 * 0.00694$