

Home report

706 South Conkling Street, Canton, Baltimore, Baltimore city, Maryland, United States, 21224



Total Area: 1793 sq. ft

Floor 1: 517 sq. ft, Floor 2: 679 sq. ft, Floor 3: 597 sq. ft, Floor 4: 0 sq. ft

Excluded: Stairwell 29 sq. ft, Rooftop 297 sq. ft, Walls: 196 sq. ft

Property summary

 **4** Floors

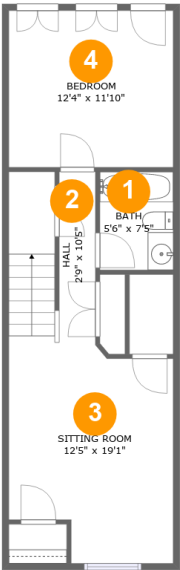
 **3** Bedrooms

 **3** Bathrooms

 **1** Half baths

Home report

706 South Conkling Street, Canton, Baltimore, Baltimore city, Maryland, United States, 21224



Room dimensions

Floor 1 Total:517sqft Excluded: 0sqft

#		Max Dimensions	sqft	Included
1	Bath	5'6" x 7'5"	41 sq. ft	Yes
2	Hall	2'9" x 10'5"	29 sq. ft	Yes
3	Sitting Room	12'5" x 19'1"	200 sq. ft	Yes
4	Bedroom	12'4" x 11'10"	146 sq. ft	Yes

Home report

706 South Conkling Street, Canton, Baltimore, Baltimore city,
Maryland, United States, 21224



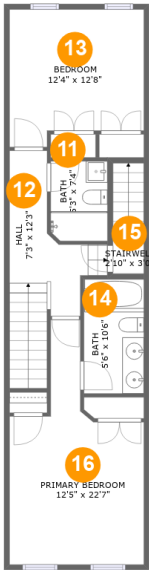
Room dimensions

Floor 2 Total:679sqft Excluded: 0sqft

#		Max Dimensions	sqft	Included
5	Foyer	3'7" x 4'8"	17 sq. ft	Yes
6	Living Room	12'5" x 15'5"	173 sq. ft	Yes
7	Dining Area	12'4" x 14'6"	181 sq. ft	Yes
8	Kitchen	12'5" x 16'1"	199 sq. ft	Yes
9	Laundry	9'3" x 8'9"	78 sq. ft	Yes
10	WC	2'10" x 7'3"	24 sq. ft	Yes

Home report

706 South Conkling Street, Canton, Baltimore, Baltimore city,
Maryland, United States, 21224

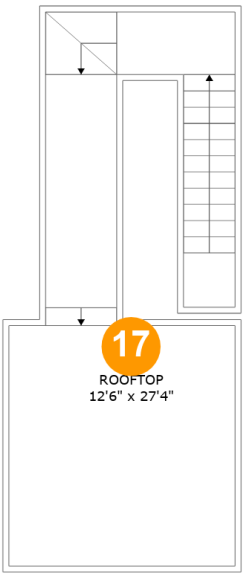


Room dimensions

Floor 3 Total:597sqft Excluded: 29sqft

#		Max Dimensions	sqft	Included
11	Bath	5'3" x 7'4"	38 sq. ft	Yes
12	Hall	7'3" x 12'3"	104 sq. ft	Yes
13	Bedroom	12'4" x 12'8"	144 sq. ft	Yes
14	Bath	5'6" x 10'6"	58 sq. ft	Yes
15	Stairwell	2'10" x 3'0"	29 sq. ft	No
16	Primary Bedroom	12'5" x 22'7"	191 sq. ft	Yes

706 South Conkling Street, Canton, Baltimore, Baltimore city,
Maryland, United States, 21224



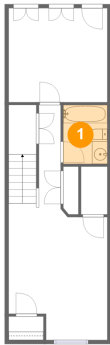
Room dimensions

Floor 4 Total:0sqft Excluded: 297sqft

#		Max Dimensions	sqft	Included
17	Rooftop	12'6" x 27'4"	297 sq. ft	No

706 South Conkling Street, Canton, Baltimore, Baltimore city,
Maryland, United States, 21224

1 Floor 1 - Bath



Max Dimensions: 5'6" x 7'5"
Calculated Area: 41 sq. ft
Included: Yes

Heated: Yes
Finished: Yes
Enclosed: Yes
Contiguous: Yes
Permitted: Yes
Wet space: Yes
Addition: No
Conversion: No

2 Floor 1 - Hall

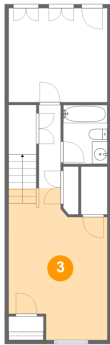


Max Dimensions: 2'9" x
10'5"
Calculated Area: 29 sq. ft
Included: Yes

Heated: Yes
Finished: Yes
Enclosed: Yes
Contiguous:
Yes
Permitted: Yes
Wet space: No
Addition: No
Conversion: No

706 South Conkling Street, Canton, Baltimore, Baltimore city,
Maryland, United States, 21224

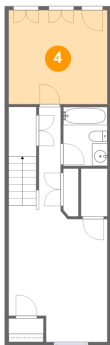
3 Floor 1 - Sitting Room



Max Dimensions: 12'5" x 19'1"
Calculated Area: 200 sq. ft
Included: Yes

Heated: Yes
Finished: Yes
Enclosed: Yes
Contiguous: Yes
Permitted: Yes
Wet space: No
Addition: No
Conversion: No

4 Floor 1 - Bedroom



Max Dimensions: 12'4" x 11'10"
Calculated Area: 146 sq. ft
Included: Yes

Heated: Yes
Finished: Yes
Enclosed: Yes
Contiguous: Yes
Permitted: Yes
Wet space: No
Addition: No
Conversion: No

5 Floor 2 - Foyer



Max Dimensions: 3'7" x 4'8"
Calculated Area: 17 sq. ft
Included: Yes

Heated: Yes
Finished: Yes
Enclosed: Yes
Contiguous: Yes
Permitted: Yes
Wet space: No
Addition: No
Conversion: No

706 South Conkling Street, Canton, Baltimore, Baltimore city,
Maryland, United States, 21224

6 Floor 2 - Living Room



Max Dimensions: 12'5" x 15'5"
Calculated Area: 173 sq. ft
Included: Yes

Heated: Yes
Finished: Yes
Enclosed: Yes
Contiguous: Yes
Permitted: Yes
Wet space: No
Addition: No
Conversion: No

7 Floor 2 - Dining Area



Max Dimensions: 12'4" x 14'6"
Calculated Area: 181 sq. ft
Included: Yes

Heated: Yes
Finished: Yes
Enclosed: Yes
Contiguous: Yes
Permitted: Yes
Wet space: No
Addition: No
Conversion: No

8 Floor 2 - Kitchen



Max Dimensions: 12'5" x 16'1"
Calculated Area: 199 sq. ft
Included: Yes

Heated: Yes
Finished: Yes
Enclosed: Yes
Contiguous: Yes
Permitted: Yes
Wet space: No
Addition: No
Conversion: No

706 South Conkling Street, Canton, Baltimore, Baltimore city,
Maryland, United States, 21224

9 Floor 2 - Laundry



Max Dimensions: 9'3" x 8'9"
Calculated Area: 78 sq. ft
Included: Yes

Heated: Yes
Finished: Yes
Enclosed: Yes
Contiguous: Yes
Permitted: Yes
Wet space: No
Addition: No
Conversion: No

10 Floor 2 - WC



Max Dimensions: 2'10" x 7'3"
Calculated Area: 24 sq. ft
Included: Yes

Heated: Yes
Finished: Yes
Enclosed: Yes
Contiguous: Yes
Permitted: Yes
Wet space: Yes
Addition: No
Conversion: No

11 Floor 3 - Bath



Max Dimensions: 5'3" x 7'4"
Calculated Area: 38 sq. ft
Included: Yes

Heated: Yes
Finished: Yes
Enclosed: Yes
Contiguous: Yes
Permitted: Yes
Wet space: Yes
Addition: No
Conversion: No

706 South Conkling Street, Canton, Baltimore, Baltimore city,
Maryland, United States, 21224

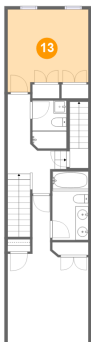
12 Floor 3 - Hall



Max Dimensions: 7'3" x 12'3"
Calculated Area: 104 sq. ft
Included: Yes

Heated: Yes
Finished: Yes
Enclosed: Yes
Contiguous: Yes
Permitted: Yes
Wet space: No
Addition: No
Conversion: No

13 Floor 3 - Bedroom



Max Dimensions: 12'4" x 12'8"
Calculated Area: 144 sq. ft
Included: Yes

Heated: Yes
Finished: Yes
Enclosed: Yes
Contiguous: Yes
Permitted: Yes
Wet space: No
Addition: No
Conversion: No

14 Floor 3 - Bath



Max Dimensions: 5'6" x 10'6"
Calculated Area: 58 sq. ft
Included: Yes

Heated: Yes
Finished: Yes
Enclosed: Yes
Contiguous: Yes
Permitted: Yes
Wet space: Yes
Addition: No
Conversion: No

706 South Conkling Street, Canton, Baltimore, Baltimore city,
Maryland, United States, 21224

15 Floor 3 - Stairwell



Max Dimensions: 2'10" x 3'0"
Calculated Area: 29 sq. ft
Included: No

Heated: No
Finished: No
Enclosed: No
Contiguous: Yes
Permitted: No
Wet space: No
Addition: No
Conversion: No

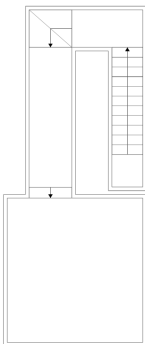
16 Floor 3 - Primary Bedroom



Max Dimensions: 12'5" x 22'7"
Calculated Area: 191 sq. ft
Included: Yes

Heated: Yes
Finished: Yes
Enclosed: Yes
Contiguous: Yes
Permitted: Yes
Wet space: No
Addition: No
Conversion: No

17 Floor 4 - Rooftop



Max Dimensions: 12'6" x 27'4"
Calculated Area: 297 sq. ft
Included: No

Heated: No
Finished: No
Enclosed: No
Contiguous: Yes
Permitted: No
Wet space: No
Addition: No
Conversion: No