

2003 Northside Drive, Northside Park, Blacksburg, Montgomery County, Virginia, United

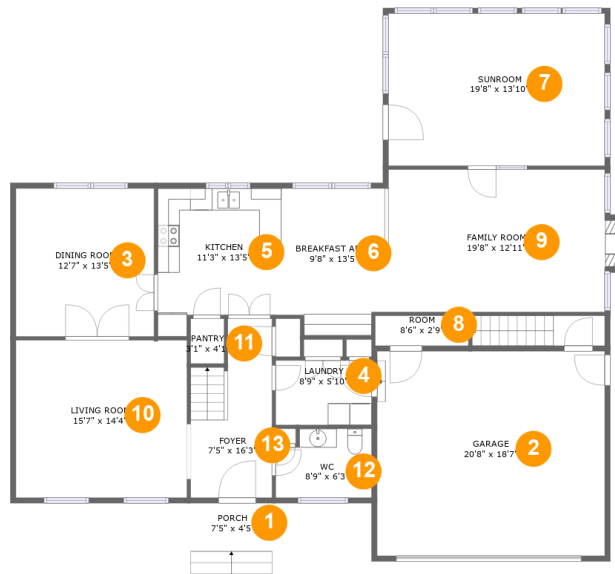


Property Summary

 **1** garages  **4** bedrooms  **2** bathrooms  **1** half baths

 **2** floors  **2,629** Gross Living Area sqft  **3,840** total sqft

2003 Northside Drive, Northside Park, Blacksburg, Montgomery County, Virginia, United



Room Dimensions

Floor 1

Total sqft: 2072

Living area: 1553

#	Room name	Dimensions	Area (sqft)	Counted as Living Area
1	Porch	7'5" x 4'5"	33 sq. ft	No
2	Garage	20'8" x 18'7"	385 sq. ft	No
3	Dining Room	12'7" x 13'5"	169 sq. ft	Yes
4	Laundry	8'9" x 5'10"	51 sq. ft	Yes
5	Kitchen	11'3" x 13'5"	135 sq. ft	Yes
6	Breakfast Area	9'8" x 13'5"	123 sq. ft	Yes
7	Sunroom	19'8" x 13'10"	272 sq. ft	Yes
8	Room	8'6" x 2'9"	23 sq. ft	No
9	Family Room	19'8" x 12'11"	262 sq. ft	Yes
10	Living Room	15'7" x 14'4"	223 sq. ft	Yes
11	Pantry	3'1" x 4'1"	12 sq. ft	Yes

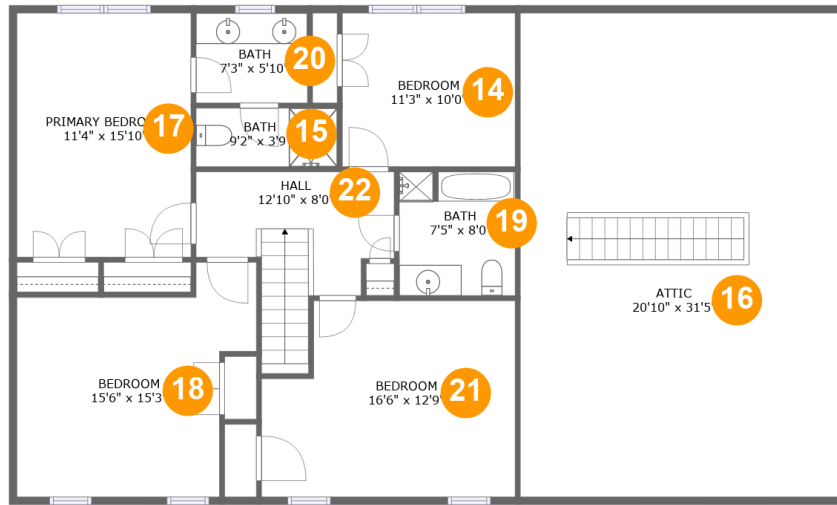
Scan captured on Wed, 24 Jul 2024 10:27:41 GMT

Information is calculated by CubiCasa technology; deemed highly reliable but not guaranteed.

**2003 Northside Drive, Northside Park,
Blacksburg, Montgomery County, Virginia, United**

#	Room name	Dimensions	Area (sqft)	Counted as Living Area
12	Wc	8'9" x 6'3"	51 sq. ft	Yes
13	Foyer	7'5" x 16'3"	105 sq. ft	Yes

2003 Northside Drive, Northside Park, Blacksburg, Montgomery County, Virginia, United



Room Dimensions

Floor 2

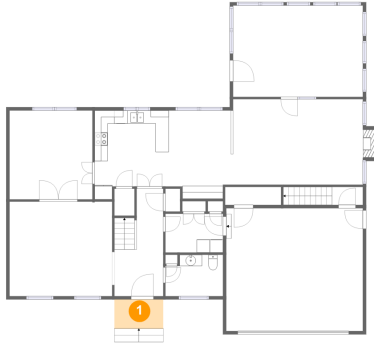
Total sqft: 1768

Living area: 1076

#	Room name	Dimensions	Area (sqft)	Counted as Living Area
14	Bedroom	11'3" x 10'0"	112 sq. ft	Yes
15	Bath	9'2" x 3'9"	35 sq. ft	Yes
16	Attic	20'10" x 31'5"	314 sq. ft	No
17	Primary Bedroom	11'4" x 15'10"	179 sq. ft	Yes
18	Bedroom	15'6" x 15'3"	188 sq. ft	Yes
19	Bath	7'5" x 8'0"	60 sq. ft	Yes
20	Bath	7'3" x 5'10"	42 sq. ft	Yes
21	Bedroom	16'6" x 12'9"	193 sq. ft	Yes
22	Hall	12'10" x 8'0"	103 sq. ft	Yes

2003 Northside Drive, Northside Park, Blacksburg, Montgomery County, Virginia, United

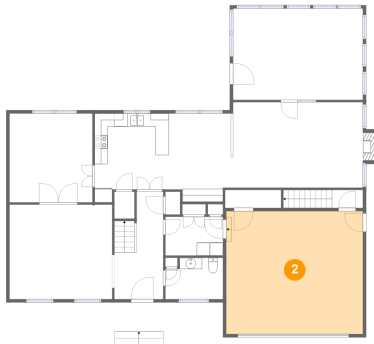
1 Floor 1 - Porch



Dimensions: 7'5" x 4'5"
Area: 33 sq. ft
Counted as Living Area: No

Heated: No
Finished: Yes
Enclosed: No
Contiguous: Yes
Permitted: Yes
Wet Space: No
Addition: No
Conversion: No

2 Floor 1 - Garage

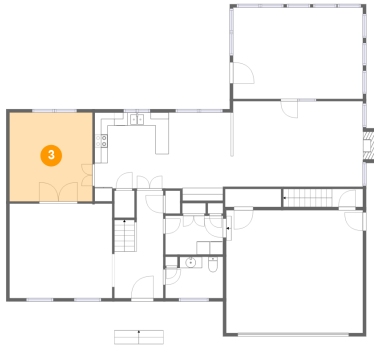


Dimensions: 20'8" x 18'7"
Area: 385 sq. ft
Counted as Living Area: No

Heated: No
Finished: No
Enclosed: Yes
Contiguous: Yes
Permitted: Yes
Wet Space: No
Addition: No
Conversion: No

2003 Northside Drive, Northside Park, Blacksburg, Montgomery County, Virginia, United

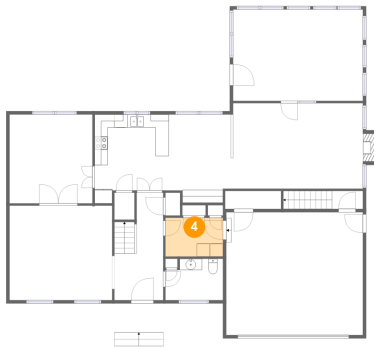
3 Floor 1 - Dining Room



Dimensions: 12'7" x 13'5"
Area: 169 sq. ft
Counted as Living Area:
Yes

Heated: Yes
Finished: Yes
Enclosed: Yes
Contiguous:
Yes
Permitted: Yes
Wet Space: No
Addition: No
Conversion: No

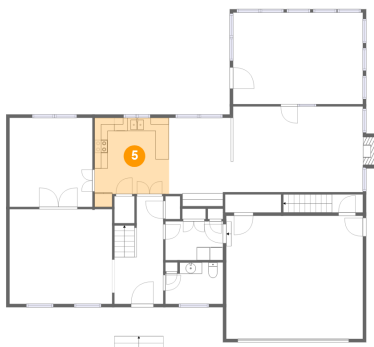
4 Floor 1 - Laundry



Dimensions: 8'9" x 5'10"
Area: 51 sq. ft
Counted as Living Area:
Yes

Heated: Yes
Finished: Yes
Enclosed: Yes
Contiguous:
Yes
Permitted: Yes
Wet Space: No
Addition: No
Conversion: No

5 Floor 1 - Kitchen

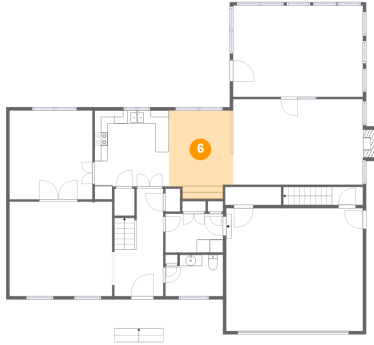


Dimensions: 11'3" x 13'5"
Area: 135 sq. ft
Counted as Living Area:
Yes

Heated: Yes
Finished: Yes
Enclosed: Yes
Contiguous:
Yes
Permitted: Yes
Wet Space: No
Addition: No
Conversion: No

2003 Northside Drive, Northside Park, Blacksburg, Montgomery County, Virginia, United

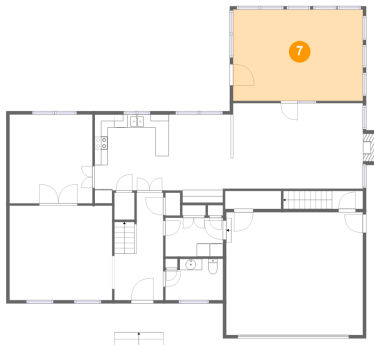
6 Floor 1 - Breakfast Area



Dimensions: 9'8" x 13'5"
Area: 123 sq. ft
Counted as Living Area:
Yes

Heated: Yes
Finished: Yes
Enclosed: Yes
Contiguous:
Yes
Permitted: Yes
Wet Space: No
Addition: No
Conversion: No

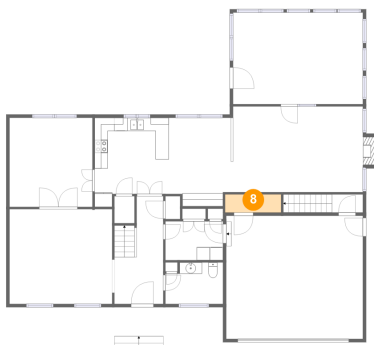
7 Floor 1 - Sunroom



Dimensions: 19'8" x 13'10"
Area: 272 sq. ft
Counted as Living Area:
Yes

Heated: Yes
Finished: Yes
Enclosed: Yes
Contiguous:
Yes
Permitted: Yes
Wet Space: No
Addition: No
Conversion: No

8 Floor 1 - Room

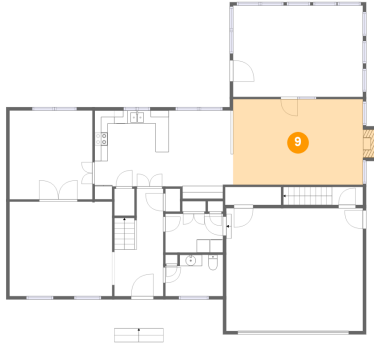


Dimensions: 8'6" x 2'9"
Area: 23 sq. ft
Counted as Living Area: No

Heated: Yes
Finished: No
Enclosed: Yes
Contiguous: Yes
Permitted: Yes
Wet Space: No
Addition: No
Conversion: No

2003 Northside Drive, Northside Park, Blacksburg, Montgomery County, Virginia, United

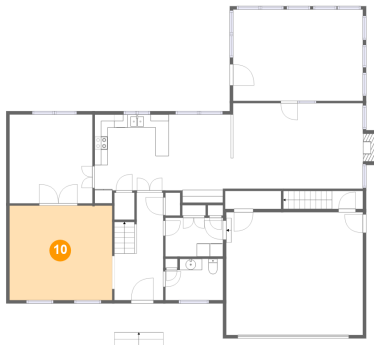
9 Floor 1 - Family Room



Dimensions: 19'8" x 12'11"
Area: 262 sq. ft
Counted as Living Area:
Yes

Heated: Yes
Finished: Yes
Enclosed: Yes
Contiguous:
Yes
Permitted: Yes
Wet Space: No
Addition: No
Conversion: No

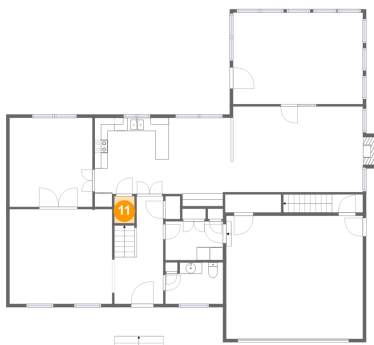
10 Floor 1 - Living Room



Dimensions: 15'7" x 14'4"
Area: 223 sq. ft
Counted as Living Area:
Yes

Heated: Yes
Finished: Yes
Enclosed: Yes
Contiguous:
Yes
Permitted: Yes
Wet Space: No
Addition: No
Conversion: No

11 Floor 1 - Pantry

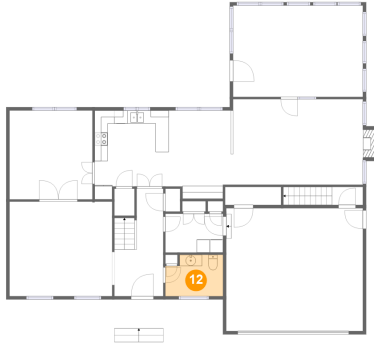


Dimensions: 3'1" x 4'1"
Area: 12 sq. ft
Counted as Living Area:
Yes

Heated: Yes
Finished: Yes
Enclosed: Yes
Contiguous:
Yes
Permitted: Yes
Wet Space: No
Addition: No
Conversion: No

2003 Northside Drive, Northside Park, Blacksburg, Montgomery County, Virginia, United

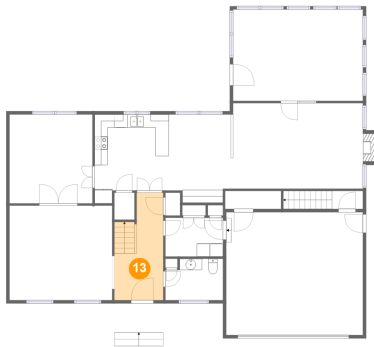
12 Floor 1 - Wc



Dimensions: 8'9" x 6'3"
Area: 51 sq. ft
Counted as Living Area:
Yes

Heated: Yes
Finished: Yes
Enclosed: Yes
Contiguous:
Yes
Permitted: Yes
Wet Space: Yes
Addition: No
Conversion: No

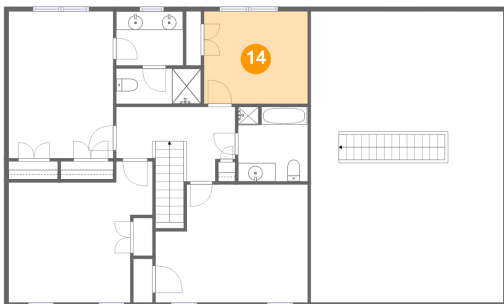
13 Floor 1 - Foyer



Dimensions: 7'5" x 16'3"
Area: 105 sq. ft
Counted as Living Area:
Yes

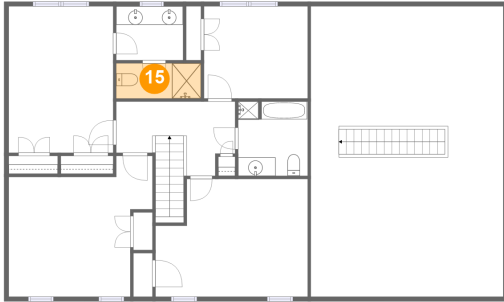
Heated: Yes
Finished: Yes
Enclosed: Yes
Contiguous:
Yes
Permitted: Yes
Wet Space: No
Addition: No
Conversion: No

14 Floor 2 - Bedroom



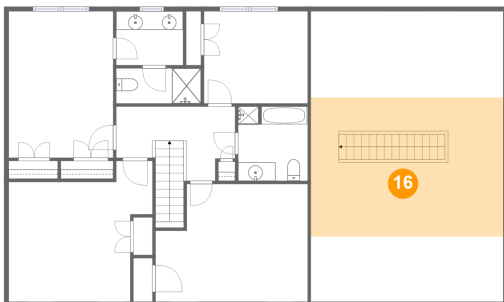
Dimensions: 11'3" x 10'0"
Area: 112 sq. ft
Counted as Living Area:
Yes

Heated: Yes
Finished: Yes
Enclosed: Yes
Contiguous:
Yes
Permitted: Yes
Wet Space: No
Addition: No
Conversion: No

**2003 Northside Drive, Northside Park,
Blacksburg, Montgomery County, Virginia, United****15 Floor 2 - Bath**

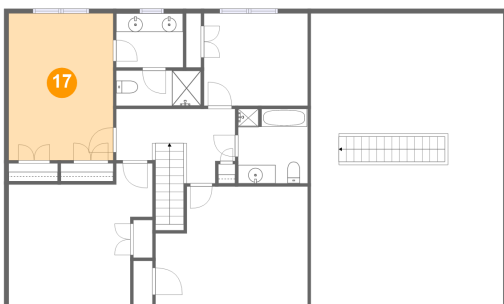
Dimensions: 9'2" x 3'9"
Area: 35 sq. ft
Counted as Living Area:
Yes

Heated: Yes
Finished: Yes
Enclosed: Yes
Contiguous:
Yes
Permitted: Yes
Wet Space: Yes
Addition: No
Conversion: No

16 Floor 2 - Attic

Dimensions: 20'10" x 31'5"
Area: 314 sq. ft
Counted as Living Area: No

Heated: No
Finished: No
Enclosed: Yes
Contiguous: Yes
Permitted: Yes
Wet Space: No
Addition: No
Conversion: No

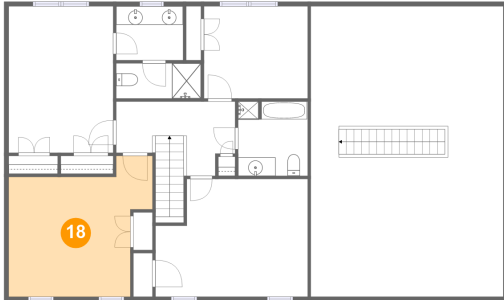
17 Floor 2 - Primary Bedroom

Dimensions: 11'4" x 15'10"
Area: 179 sq. ft
Counted as Living Area:
Yes

Heated: Yes
Finished: Yes
Enclosed: Yes
Contiguous:
Yes
Permitted: Yes
Wet Space: No
Addition: No
Conversion: No

2003 Northside Drive, Northside Park, Blacksburg, Montgomery County, Virginia, United

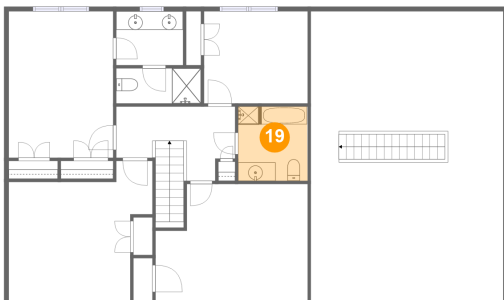
18 Floor 2 - Bedroom



Dimensions: 15'6" x 15'3"
Area: 188 sq. ft
Counted as Living Area:
Yes

Heated: Yes
Finished: Yes
Enclosed: Yes
Contiguous:
Yes
Permitted: Yes
Wet Space: No
Addition: No
Conversion: No

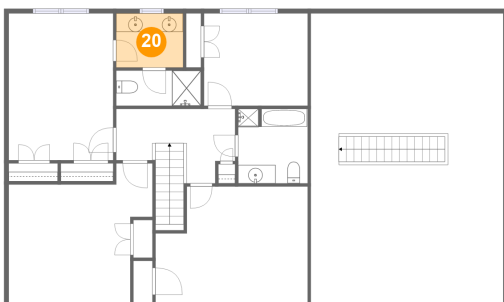
19 Floor 2 - Bath



Dimensions: 7'5" x 8'0"
Area: 60 sq. ft
Counted as Living Area:
Yes

Heated: Yes
Finished: Yes
Enclosed: Yes
Contiguous:
Yes
Permitted: Yes
Wet Space: Yes
Addition: No
Conversion: No

20 Floor 2 - Bath

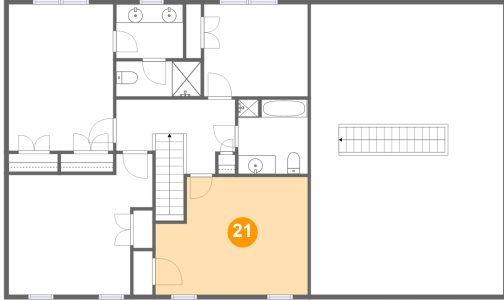


Dimensions: 7'3" x 5'10"
Area: 42 sq. ft
Counted as Living Area:
Yes

Heated: Yes
Finished: Yes
Enclosed: Yes
Contiguous:
Yes
Permitted: Yes
Wet Space: Yes
Addition: No
Conversion: No

2003 Northside Drive, Northside Park, Blacksburg, Montgomery County, Virginia, United

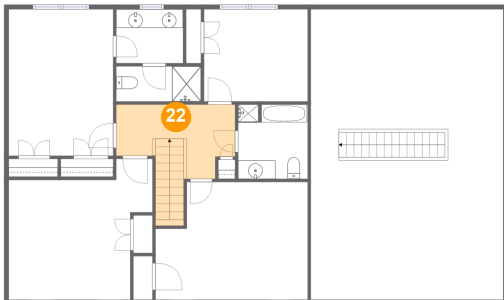
21 Floor 2 - Bedroom



Dimensions: 16'6" x 12'9"
Area: 193 sq. ft
Counted as Living Area:
Yes

Heated: Yes
Finished: Yes
Enclosed: Yes
Contiguous:
Yes
Permitted: Yes
Wet Space: No
Addition: No
Conversion: No

22 Floor 2 - Hall



Dimensions: 12'10" x 8'0"
Area: 103 sq. ft
Counted as Living Area:
Yes

Heated: Yes
Finished: Yes
Enclosed: Yes
Contiguous:
Yes
Permitted: Yes
Wet Space: No
Addition: No
Conversion: No