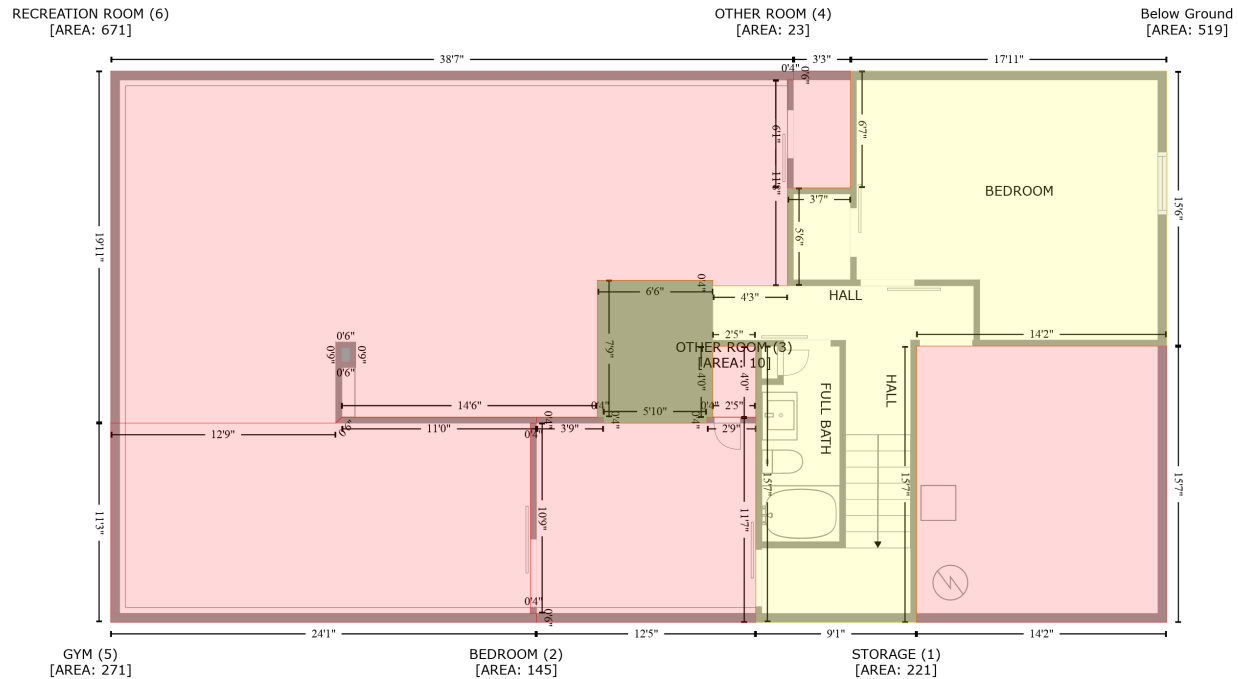


762 N 1720 East Rd, Milford, Illinois, United States

Gross Living Area: 1862 sq. ft



Space	Area (sq. ft)	Calculation
Below Ground (Living area)	519	$-(563.3 + 563.3) * (139.7 - 326.2) + (563.3 + 393.5) * (326.2 - 326.2) + (393.5 + 393.5) * (326.2 - 513.7) + (393.5 + 284.3) * (513.7 - 513.7) + (284.3 + 284.3) * (513.7 - 326.4) + (284.3 + 255.1) * (326.4 - 326.4) + (255.1 + 255.1) * (326.4 - 374.6) + (255.1 + 251.1) * (374.6 - 374.6) + (251.1 + 251.1) * (374.6 - 378.6) + (251.1 + 180.9) * (378.6 - 378.6) + (180.9 + 180.9) * (378.6 - 374.6) + (180.9 + 176.9) * (374.6 - 374.6) + (176.9 + 176.9) * (374.6 - 281.7) + (176.9 + 255.1) * (281.7 - 281.7) + (255.1 + 255.1) * (281.7 - 285.4) + (255.1 + 305.8) * (285.4 - 285.4) + (305.8 + 305.8) * (285.4 - 219.1) + (305.8 + 348.6) * (219.1 - 219.1) + (348.6 + 348.6) * (219.1 - 139.7) + (348.6 + 563.3) * (139.7 - 139.7) * 0.5 * 0.00694$
STORAGE (Non-living area)	221	$-(563.3 + 563.3) * (326.2 - 513.7) + (563.3 + 393.5) * (513.7 - 513.7) + (393.5 + 393.5) * (513.7 - 326.2) + (393.5 + 563.3) * (326.2 - 326.2) * 0.5 * 0.00694$
BEDROOM (Non-living area)	145	$-(180.9 + 180.9) * (374.6 - 378.6) + (180.9 + 251.1) * (378.6 - 378.6) + (251.1 + 251.1) * (378.6 - 374.6) + (251.1 + 284.3) * (374.6 - 374.6) + (284.3 + 284.3) * (374.6 - 513.7) + (284.3 + 135.4) * (513.7 - 513.7) + (135.4 + 135.4) * (513.7 - 507.7) + (135.4 + 131.4) * (507.7 - 507.7) + (131.4 + 131.4) * (507.7 - 378.6) + (131.4 + 135.4) * (378.6 - 378.6) + (135.4 + 135.4) * (378.6 - 374.6) + (135.4 + 180.9) * (374.6 - 374.6) * 0.5 * 0.00694$
OTHER ROOM (Non-living area)	10	$-(284.3 + 284.3) * (326.4 - 374.6) + (284.3 + 255.1) * (374.6 - 374.6) + (255.1 + 255.1) * (374.6 - 326.4) + (255.1 + 284.3) * (326.4 - 326.4) * 0.5 * 0.00694$
OTHER ROOM (Non-living area)	23	$-(348.6 + 348.6) * (139.7 - 219.1) + (348.6 + 305.8) * (219.1 - 219.1) + (305.8 + 305.8) * (219.1 - 145.7) + (305.8 + 309.8) * (145.7 - 145.7) + (309.8 + 309.8) * (145.7 - 139.7) + (309.8 + 348.6) * (139.7 - 139.7) * 0.5 * 0.00694$
GYM (Non-living area)	271	$-(135.4 + 135.4) * (374.6 - 378.6) + (135.4 + 131.4) * (378.6 - 378.6) + (131.4 + 131.4) * (378.6 - 507.7) + (131.4 + 135.4) * (507.7 - 507.7) + (135.4 + 135.4) * (507.7 - 513.7) + (135.4 + -153.6) * (513.7 - 513.7) + (-153.6 + -153.6) * (513.7 - 378.6) + (-153.6 + -0.9) * (378.6 - 378.6) + (-0.9 + 3.1) * (378.6 - 374.6) + (3.1 + 135.4) * (374.6 - 374.6) * 0.5 * 0.00694$
RECREATION	671	$-(309.8 + 309.8) * (139.7 - 145.7) + (309.8 + 305.8) * (145.7 - 145.7) + (305.8 + 305.8) * (145.7 -$

762 N 1720 East Rd, Milford, Illinois, United States

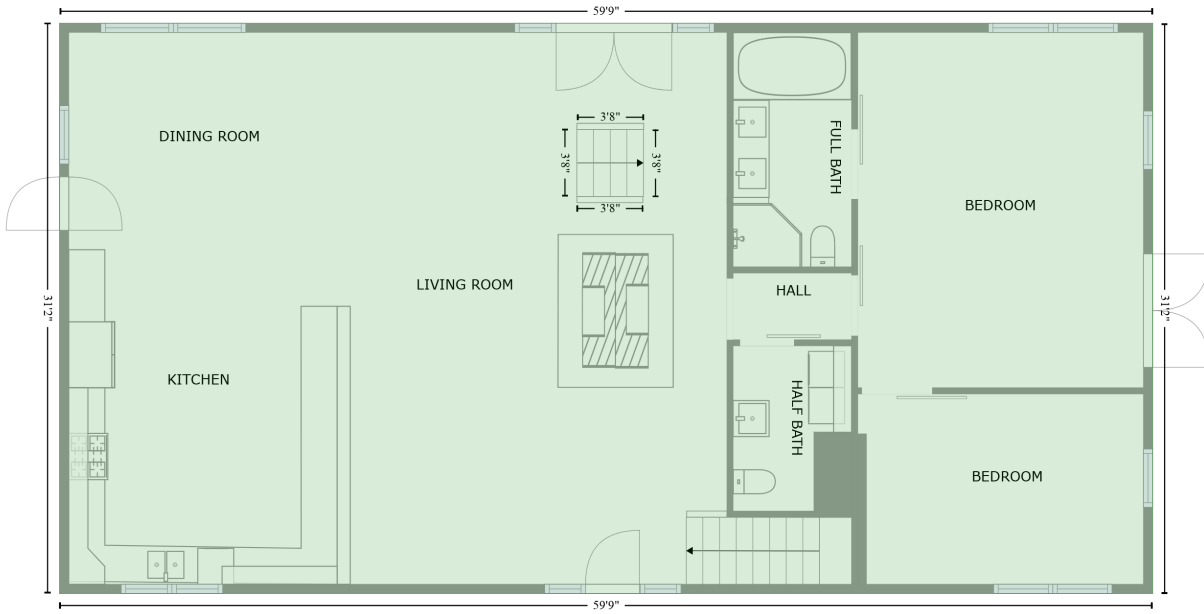
Gross Living Area: 1862 sq. ft

Space	Area (sq. ft)	Calculation <small>Coordinate Polygon Area Algorithm using inches</small>
ROOM (Non-living area)		$285.4 + (305.8 + 255.1) * (285.4 - 285.4) + (255.1 + 255.1) * (285.4 - 281.7) + (255.1 + 176.9) * (281.7 - 281.7) + (176.9 + 176.9) * (281.7 - 374.6) + (176.9 + 3.1) * (374.6 - 374.6) + (3.1 + -0.9) * (374.6 - 378.6) + (-0.9 + -153.6) * (378.6 - 378.6) + (-153.6 + -153.6) * (378.6 - 139.7) + (-153.6 + 309.8) * (139.7 - 139.7) * 0.5 * 0.00694 + -(8.8 + 3.1) * (327.6 - 327.6) + (3.1 + 3.1) * (327.6 - 336.8) + (3.1 + 8.8) * (336.8 - 336.8) + (8.8 + 8.8) * (336.8 - 327.6) * 0.5 * 0.00694$

762 N 1720 East Rd, Milford, Illinois, United States

Gross Living Area: 1862 sq. ft

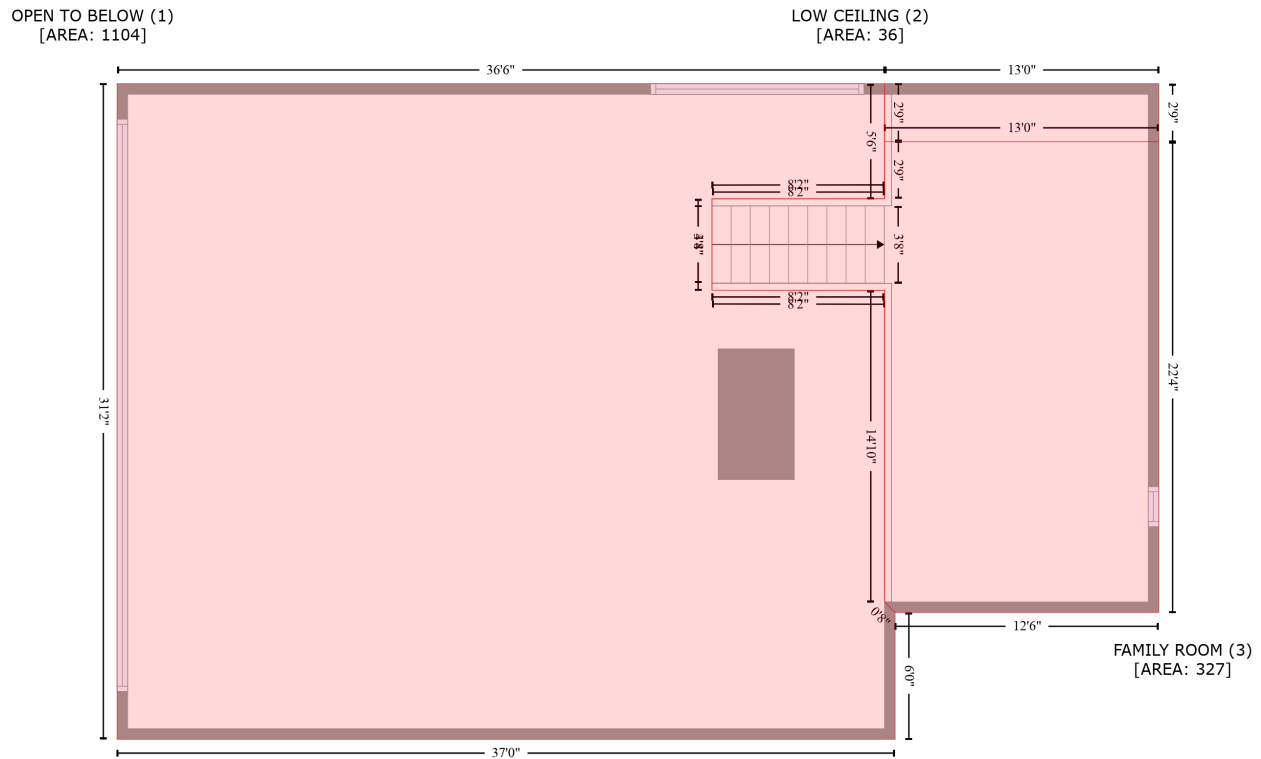
FLOOR 2
[AREA: 1862]



Space	Area (sq. ft)	Calculation <small>Coordinate Polygon Area Algorithm using inches</small>
FLOOR 2 (Living area)	1862	$-((570.5 + 570.5) * (168.6 - 542.6) + (570.5 + -146.6) * (542.6 - 542.6) + (-146.6 + -146.6) * (542.6 - 168.6) + (-146.6 + 570.5) * (168.6 - 168.6)) * 0.5 * 0.00694$

762 N 1720 East Rd, Milford, Illinois, United States

Gross Living Area: 1862 sq. ft



Space	Area (sq. ft)	Calculation <small>Coordinate Polygon Area Algorithm using inches</small>
OPEN TO BELOW (Non-living area)	1104	$-\left((284.6 + 284.6) * (170.1 - 235.6) + (284.6 + 186.1) * (235.6 - 235.7) + (186.1 + 186.1) * (235.7 - 287.7) + (186.1 + 284.6) * (287.7 - 287.9) + (284.6 + 284.6) * (287.9 - 465.5) + (284.6 + 290.6) * (465.5 - 471.5) + (290.6 + 290.6) * (471.5 - 543.7) + (290.6 + -153.3) * (543.7 - 543.7) + (-153.3 + -153.3) * (543.7 - 170.1) + (-153.3 + 284.6) * (170.1 - 170.1)) * 0.5 * 0.00694$
LOW CEILING (Non-living area)	36	$-\left((441.1 + 441.1) * (170.1 - 203.1) + (441.1 + 284.6) * (203.1 - 203.1) + (284.6 + 284.6) * (203.1 - 170.1) + (284.6 + 441.1) * (170.1 - 170.1)) * 0.5 * 0.00694$
FAMILY ROOM (Non-living area)	327	$-\left((441.1 + 441.1) * (203.1 - 471.5) + (441.1 + 290.6) * (471.5 - 471.5) + (290.6 + 284.6) * (471.5 - 465.5) + (284.6 + 284.6) * (465.5 - 287.9) + (284.6 + 186.1) * (287.9 - 287.7) + (186.1 + 186.1) * (287.7 - 235.7) + (186.1 + 284.6) * (235.7 - 235.6) + (284.6 + 284.6) * (235.6 - 203.1) + (284.6 + 441.1) * (203.1 - 203.1)) * 0.5 * 0.00694$