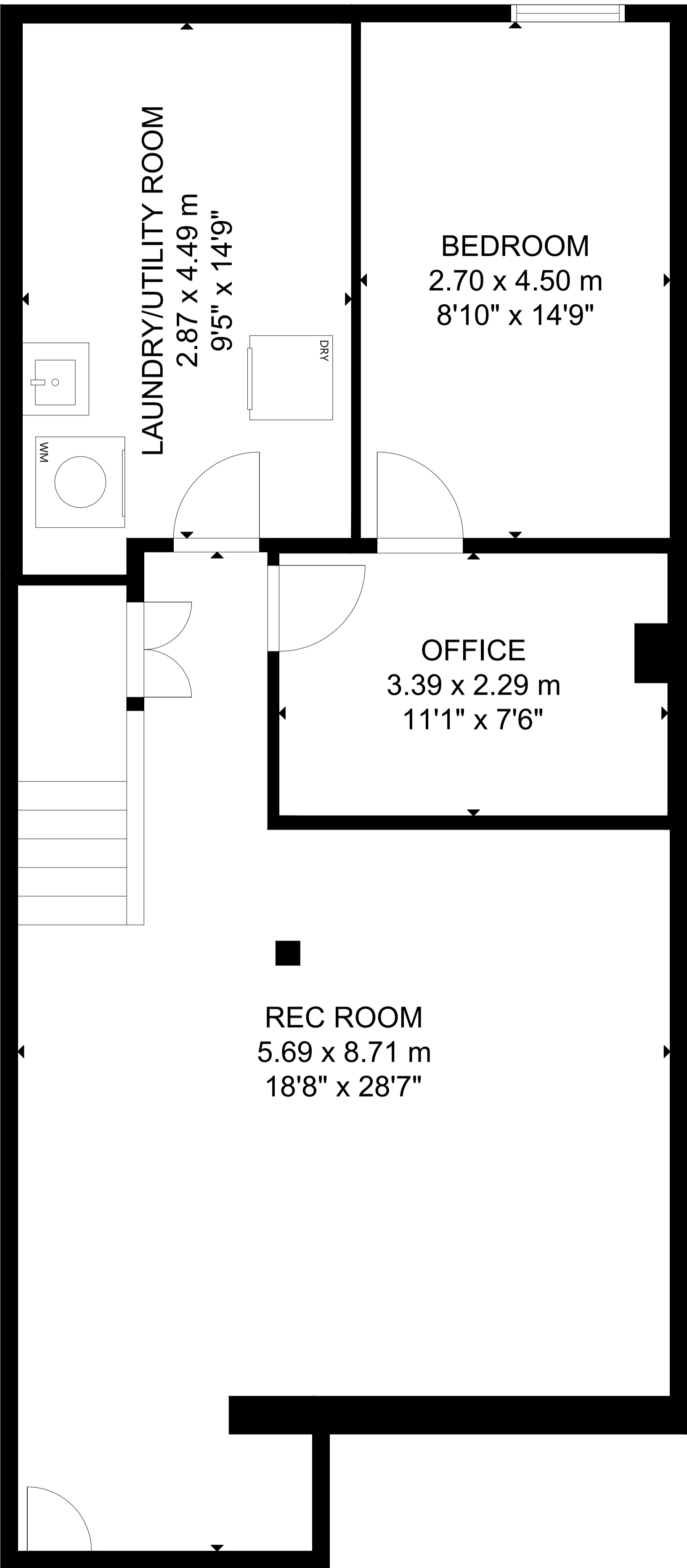


104 Seagrave Crescent



LOWER LEVER

GROSS INTERNAL AREA
MAIN FLOOR : 799 sq ft/ 74 m², SECOND FLOOR : 769 sq ft/ 71 m²
LOWER LEVER : 768 sq ft/ 71 m²
GARAGE: 194 sq ft/ 18 m²
TOTAL: 2,336 sq ft/ 216 m²
SIZE AND DIMENSIONS ARE APPROXIMATE, ACTUAL MAY VARY.