

4039 Poplar Grove Drive, Falling Creek, Vinton, Roanoke County, Virginia, United States, 24179



Property Summary

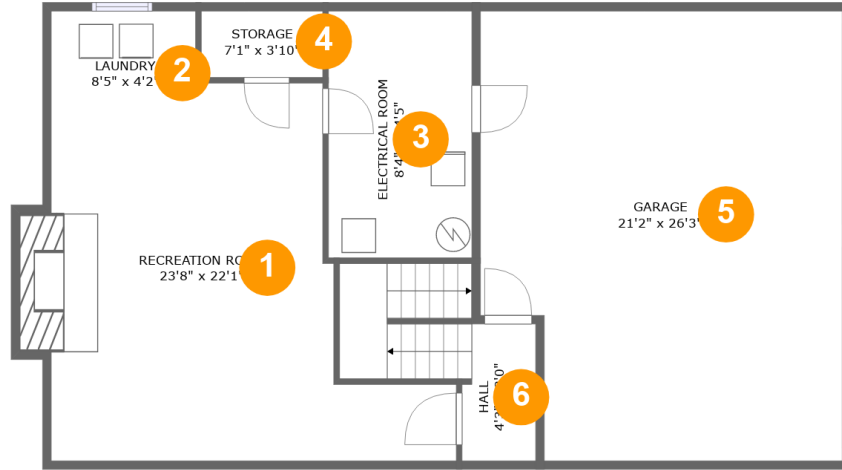
1 garages **3** bedrooms **2** bathrooms **1** half baths

3 floors

3,142 Gross Living Area sqft

4,631 total sqft

4039 Poplar Grove Drive, Falling Creek, Vinton, Roanoke County, Virginia, United States, 24179



Room Dimensions

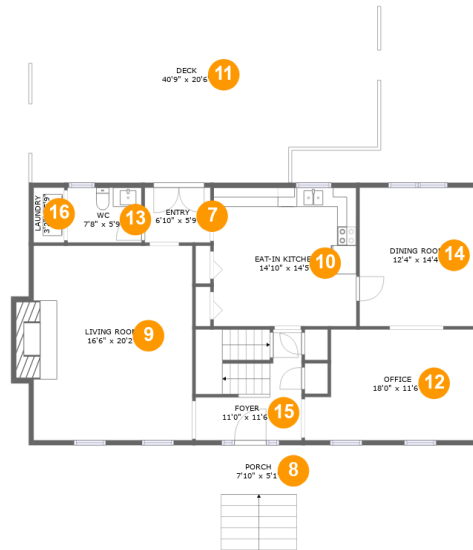
Floor 1

Total sqft: 1302

Living area: 565

#	Room name	Dimensions	Area (sqft)	Counted as Living Area
1	Recreation Room	23'8" x 22'1"	404 sq. ft	Yes
2	Laundry	8'5" x 4'2"	35 sq. ft	Yes
3	Electrical Room	8'4" x 14'5"	121 sq. ft	No
4	Storage	7'1" x 3'10"	27 sq. ft	No
5	Garage	21'2" x 26'3"	523 sq. ft	No
6	Hall	4'3" x 8'0"	83 sq. ft	Yes

4039 Poplar Grove Drive, Falling Creek, Vinton, Roanoke County, Virginia, United States, 24179



Room Dimensions

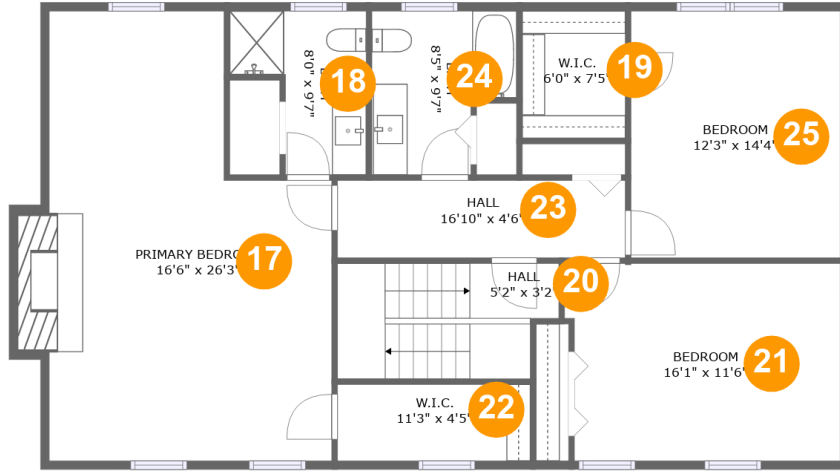
Floor 2

Total sqft: 2027

Living area: 1286

#	Room name	Dimensions	Area (sqft)	Counted as Living Area
7	Entry	6'10" x 5'9"	39 sq. ft	Yes
8	Porch	7'10" x 5'1"	40 sq. ft	No
9	Living Room	16'6" x 20'2"	348 sq. ft	Yes
10	Eat-in Kitchen	14'10" x 14'5"	214 sq. ft	Yes
11	Deck	40'9" x 20'6"	684 sq. ft	No
12	Office	18'0" x 11'6"	188 sq. ft	Yes
13	Wc	7'8" x 5'9"	44 sq. ft	Yes
14	Dining Room	12'4" x 14'4"	177 sq. ft	Yes
15	Foyer	11'0" x 11'6"	123 sq. ft	Yes
16	Laundry	3'2" x 5'9"	18 sq. ft	Yes

4039 Poplar Grove Drive, Falling Creek, Vinton, Roanoke County, Virginia, United States, 24179



Room Dimensions

Floor 3

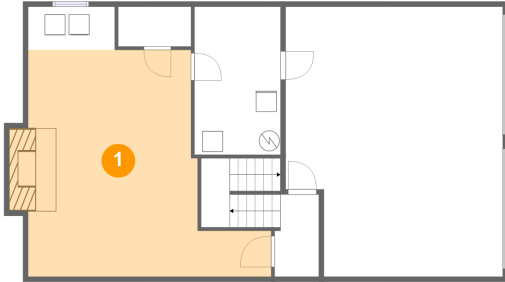
Total sqft: 1302

Living area: 1291

#	Room name	Dimensions	Area (sqft)	Counted as Living Area
17	Primary Bedroom	16'6" x 26'3"	386 sq. ft	Yes
18	Bath	8'0" x 9'7"	57 sq. ft	Yes
19	W.i.c.	6'0" x 7'5"	45 sq. ft	Yes
20	Hall	5'2" x 3'2"	81 sq. ft	Yes
21	Bedroom	16'1" x 11'6"	181 sq. ft	Yes
22	W.i.c.	11'3" x 4'5"	50 sq. ft	Yes
23	Hall	16'10" x 4'6"	76 sq. ft	Yes
24	Bath	8'5" x 9'7"	69 sq. ft	Yes
25	Bedroom	12'3" x 14'4"	176 sq. ft	Yes

4039 Poplar Grove Drive, Falling Creek, Vinton, Roanoke County, Virginia, United States, 24179

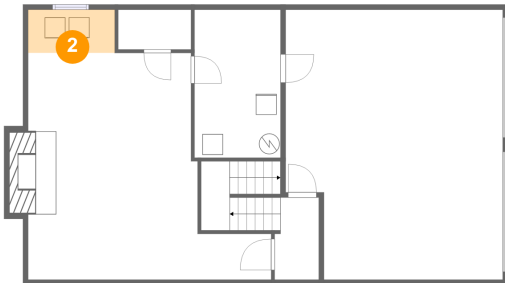
1 Floor 1 - Recreation Room



Dimensions: 23'8" x 22'1"
Area: 404 sq. ft
Counted as Living Area:
Yes

Heated: Yes
Finished: Yes
Enclosed: Yes
Contiguous:
Yes
Permitted: Yes
Wet Space: No
Addition: No
Conversion: No

2 Floor 1 - Laundry

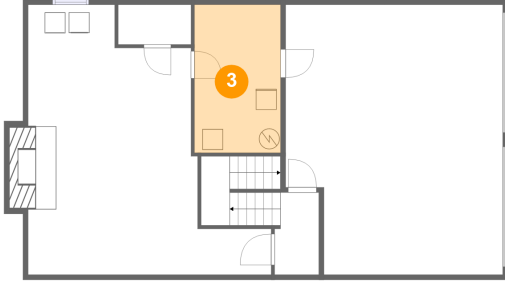


Dimensions: 8'5" x 4'2"
Area: 35 sq. ft
Counted as Living Area:
Yes

Heated: Yes
Finished: Yes
Enclosed: Yes
Contiguous:
Yes
Permitted: Yes
Wet Space: No
Addition: No
Conversion: No

4039 Poplar Grove Drive, Falling Creek, Vinton, Roanoke County, Virginia, United States, 24179

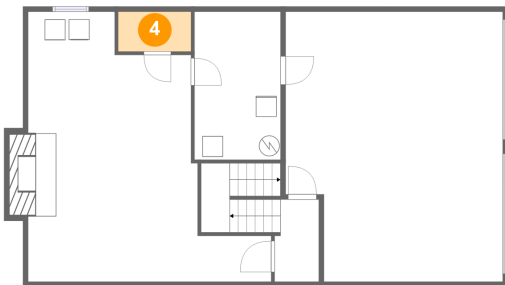
3 Floor 1 - Electrical Room



Dimensions: 8'4" x 14'5"
Area: 121 sq. ft
Counted as Living Area: No

Heated: No
Finished: No
Enclosed: Yes
Contiguous: Yes
Permitted: Yes
Wet Space: No
Addition: No
Conversion: No

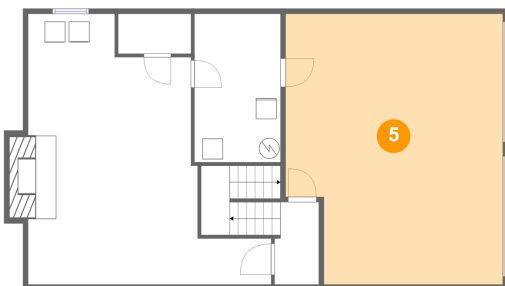
4 Floor 1 - Storage



Dimensions: 7'1" x 3'10"
Area: 27 sq. ft
Counted as Living Area: No

Heated: No
Finished: No
Enclosed: No
Contiguous: Yes
Permitted: Yes
Wet Space: No
Addition: No
Conversion: No

5 Floor 1 - Garage

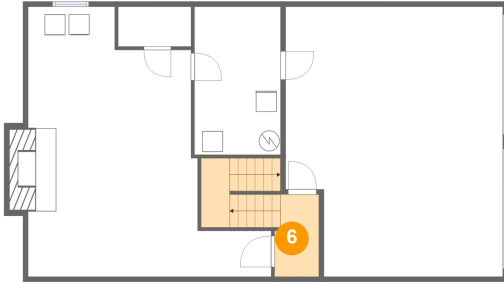


Dimensions: 21'2" x 26'3"
Area: 523 sq. ft
Counted as Living Area: No

Heated: No
Finished: No
Enclosed: Yes
Contiguous: Yes
Permitted: Yes
Wet Space: No
Addition: No
Conversion: No

4039 Poplar Grove Drive, Falling Creek, Vinton, Roanoke County, Virginia, United States, 24179

6 Floor 1 - Hall



Dimensions: 4'3" x 8'0"
Area: 83 sq. ft
Counted as Living Area:
Yes

Heated: Yes
Finished: Yes
Enclosed: Yes
Contiguous:
Yes
Permitted: Yes
Wet Space: No
Addition: No
Conversion: No

7 Floor 2 - Entry



Dimensions: 6'10" x 5'9"
Area: 39 sq. ft
Counted as Living Area:
Yes

Heated: Yes
Finished: Yes
Enclosed: Yes
Contiguous:
Yes
Permitted: Yes
Wet Space: No
Addition: No
Conversion: No

8 Floor 2 - Porch

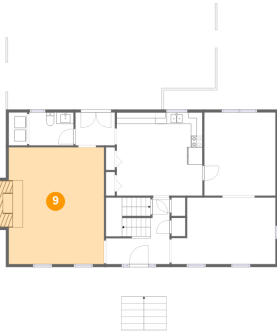


Dimensions: 7'10" x 5'1"
Area: 40 sq. ft
Counted as Living Area: No

Heated: No
Finished: Yes
Enclosed: No
Contiguous: Yes
Permitted: Yes
Wet Space: No
Addition: No
Conversion: No

4039 Poplar Grove Drive, Falling Creek, Vinton, Roanoke County, Virginia, United States, 24179

9 Floor 2 - Living Room



Dimensions: 16'6" x 20'2"
Area: 348 sq. ft
Counted as Living Area:
Yes

Heated: Yes
Finished: Yes
Enclosed: Yes
Contiguous:
Yes
Permitted: Yes
Wet Space: No
Addition: No
Conversion: No

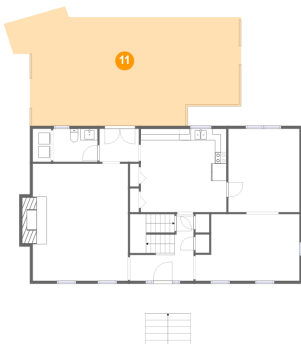
10 Floor 2 - Eat-in Kitchen



Dimensions: 14'10" x 14'5"
Area: 214 sq. ft
Counted as Living Area:
Yes

Heated: Yes
Finished: Yes
Enclosed: Yes
Contiguous:
Yes
Permitted: Yes
Wet Space: No
Addition: No
Conversion: No

11 Floor 2 - Deck

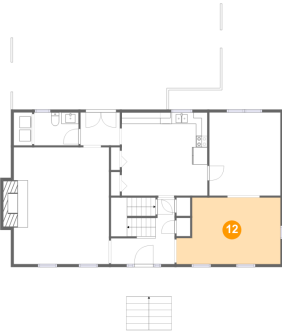


Dimensions: 40'9" x 20'6"
Area: 684 sq. ft
Counted as Living Area: No

Heated: No
Finished: Yes
Enclosed: No
Contiguous: Yes
Permitted: Yes
Wet Space: No
Addition: No
Conversion: No

4039 Poplar Grove Drive, Falling Creek, Vinton, Roanoke County, Virginia, United States, 24179

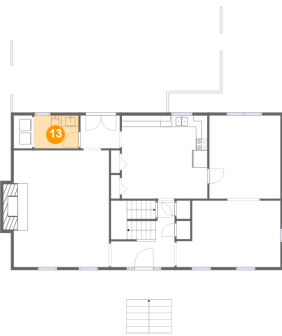
12 Floor 2 - Office



Dimensions: 18'0" x 11'6"
Area: 188 sq. ft
Counted as Living Area:
Yes

Heated: Yes
Finished: Yes
Enclosed: Yes
Contiguous:
Yes
Permitted: Yes
Wet Space: No
Addition: No
Conversion: No

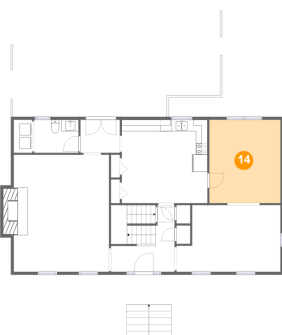
13 Floor 2 - Wc



Dimensions: 7'8" x 5'9"
Area: 44 sq. ft
Counted as Living Area:
Yes

Heated: Yes
Finished: Yes
Enclosed: Yes
Contiguous:
Yes
Permitted: Yes
Wet Space: Yes
Addition: No
Conversion: No

14 Floor 2 - Dining Room

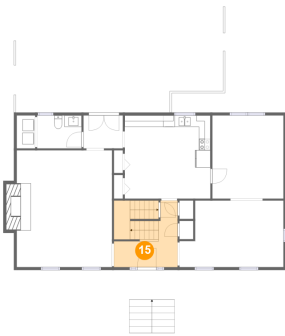


Dimensions: 12'4" x 14'4"
Area: 177 sq. ft
Counted as Living Area:
Yes

Heated: Yes
Finished: Yes
Enclosed: Yes
Contiguous:
Yes
Permitted: Yes
Wet Space: No
Addition: No
Conversion: No

4039 Poplar Grove Drive, Falling Creek, Vinton, Roanoke County, Virginia, United States, 24179

15 Floor 2 - Foyer



Dimensions: 11'0" x 11'6"
Area: 123 sq. ft
Counted as Living Area:
Yes

Heated: Yes
Finished: Yes
Enclosed: Yes
Contiguous:
Yes
Permitted: Yes
Wet Space: No
Addition: No
Conversion: No

16 Floor 2 - Laundry



Dimensions: 3'2" x 5'9"
Area: 18 sq. ft
Counted as Living Area:
Yes

Heated: Yes
Finished: Yes
Enclosed: Yes
Contiguous:
Yes
Permitted: Yes
Wet Space: No
Addition: No
Conversion: No

17 Floor 3 - Primary Bedroom

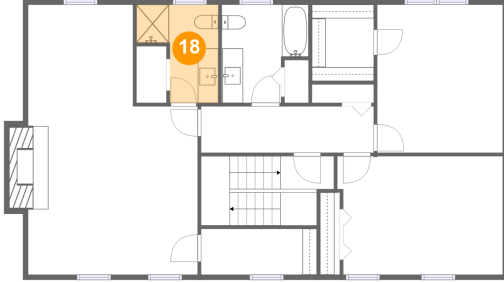


Dimensions: 16'6" x 26'3"
Area: 386 sq. ft
Counted as Living Area:
Yes

Heated: Yes
Finished: Yes
Enclosed: Yes
Contiguous:
Yes
Permitted: Yes
Wet Space: No
Addition: No
Conversion: No

4039 Poplar Grove Drive, Falling Creek, Vinton, Roanoke County, Virginia, United States, 24179

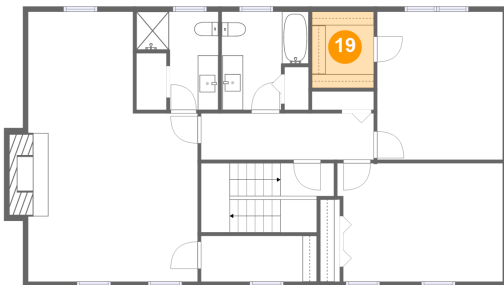
18 Floor 3 - Bath



Dimensions: 8'0" x 9'7"
Area: 57 sq. ft
Counted as Living Area:
Yes

Heated: Yes
Finished: Yes
Enclosed: Yes
Contiguous:
Yes
Permitted: Yes
Wet Space: Yes
Addition: No
Conversion: No

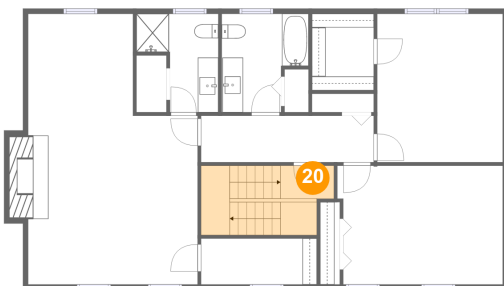
19 Floor 3 - W.i.c.



Dimensions: 6'0" x 7'5"
Area: 45 sq. ft
Counted as Living Area:
Yes

Heated: Yes
Finished: Yes
Enclosed: Yes
Contiguous:
Yes
Permitted: Yes
Wet Space: No
Addition: No
Conversion: No

20 Floor 3 - Hall

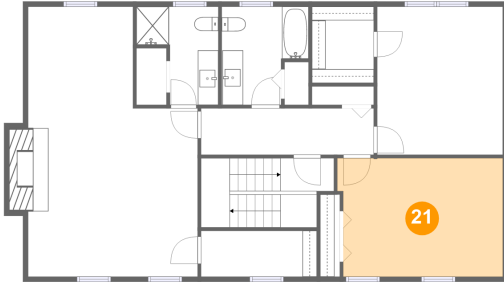


Dimensions: 5'2" x 3'2"
Area: 81 sq. ft
Counted as Living Area:
Yes

Heated: Yes
Finished: Yes
Enclosed: Yes
Contiguous:
Yes
Permitted: Yes
Wet Space: No
Addition: No
Conversion: No

4039 Poplar Grove Drive, Falling Creek, Vinton, Roanoke County, Virginia, United States, 24179

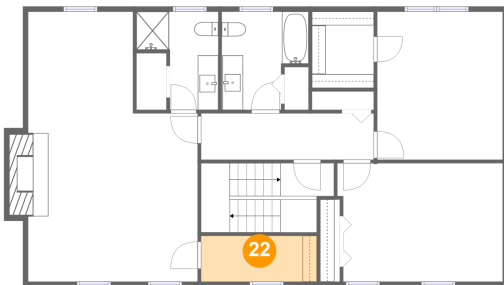
21 Floor 3 - Bedroom



Dimensions: 16'1" x 11'6"
Area: 181 sq. ft
Counted as Living Area:
Yes

Heated: Yes
Finished: Yes
Enclosed: Yes
Contiguous:
Yes
Permitted: Yes
Wet Space: No
Addition: No
Conversion: No

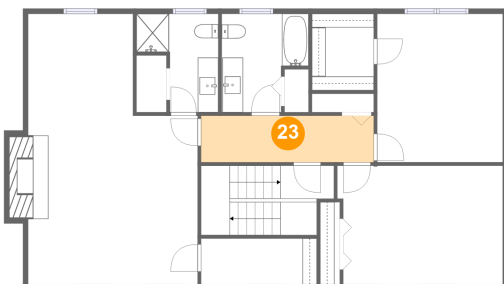
22 Floor 3 - W.i.c.



Dimensions: 11'3" x 4'5"
Area: 50 sq. ft
Counted as Living Area:
Yes

Heated: Yes
Finished: Yes
Enclosed: Yes
Contiguous:
Yes
Permitted: Yes
Wet Space: No
Addition: No
Conversion: No

23 Floor 3 - Hall

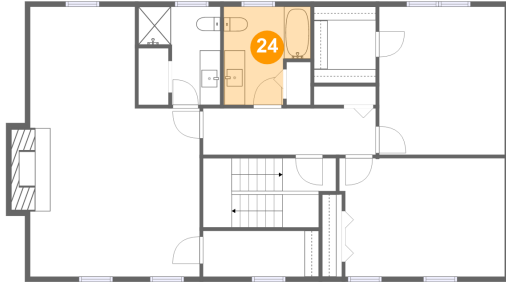


Dimensions: 16'10" x 4'6"
Area: 76 sq. ft
Counted as Living Area:
Yes

Heated: Yes
Finished: Yes
Enclosed: Yes
Contiguous:
Yes
Permitted: Yes
Wet Space: No
Addition: No
Conversion: No

4039 Poplar Grove Drive, Falling Creek, Vinton, Roanoke County, Virginia, United States, 24179

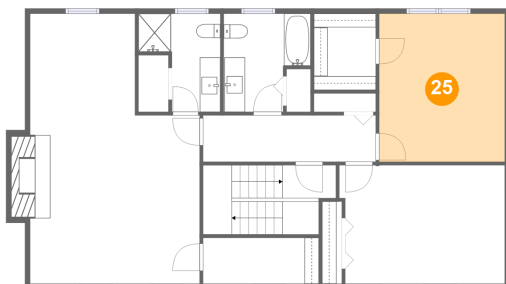
24 Floor 3 - Bath



Dimensions: 8'5" x 9'7"
Area: 69 sq. ft
Counted as Living Area:
Yes

Heated: Yes
Finished: Yes
Enclosed: Yes
Contiguous:
Yes
Permitted: Yes
Wet Space: Yes
Addition: No
Conversion: No

25 Floor 3 - Bedroom



Dimensions: 12'3" x 14'4"
Area: 176 sq. ft
Counted as Living Area:
Yes

Heated: Yes
Finished: Yes
Enclosed: Yes
Contiguous:
Yes
Permitted: Yes
Wet Space: No
Addition: No
Conversion: No