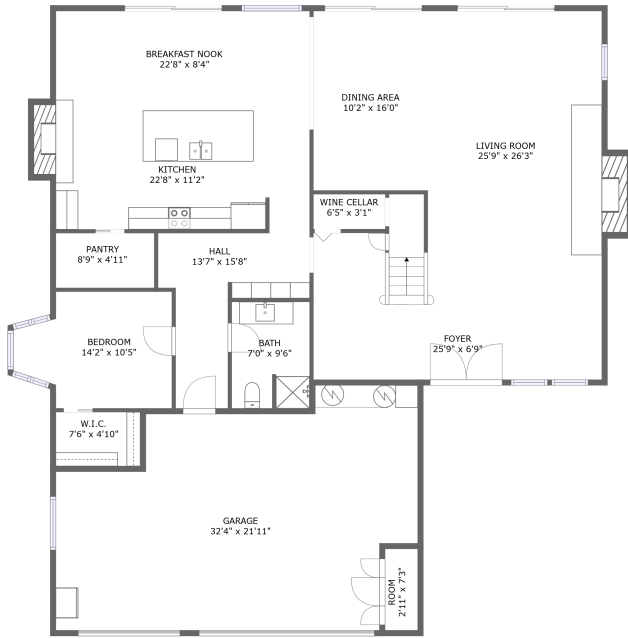


1285 Beaver Creek Lane, Paso Robles, San Luis Obispo County, California, United States, 93446




FLOOR 1




FLOOR 2

Property Summary

 **1** garages

 **5** bedrooms

 **3** bathrooms

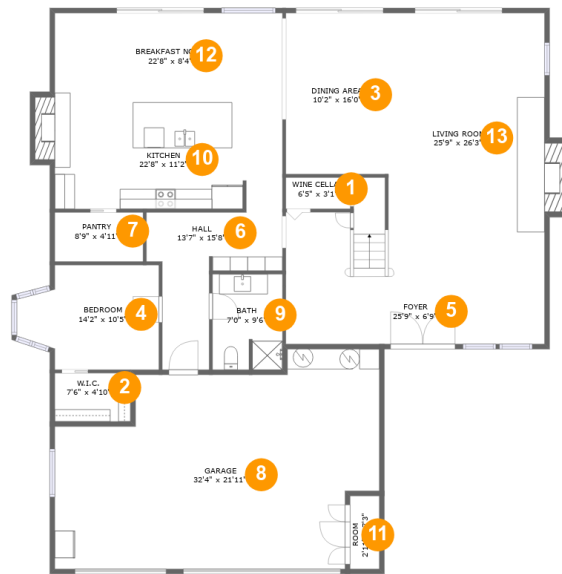
 **0** half baths

 **2** floors

 **3,678** Gross Living Area sqft

 **5,018** total sqft

1285 Beaver Creek Lane, Paso Robles, San Luis Obispo County, California, United States, 93446



Room Dimensions

Floor 1

Total sqft: 2487

Living area: 1794

#	Room name	Dimensions	Area (sqft)	Counted as Living Area
1	Wine Cellar	6'5" x 3'1"	20 sq. ft	No
2	W.i.c.	7'6" x 4'10"	36 sq. ft	Yes
3	Dining Area	10'2" x 16'0"	164 sq. ft	Yes
4	Bedroom	14'2" x 10'5"	126 sq. ft	Yes
5	Foyer	25'9" x 6'9"	173 sq. ft	Yes
6	Hall	13'7" x 15'8"	124 sq. ft	Yes
7	Pantry	8'9" x 4'11"	43 sq. ft	Yes
8	Garage	32'4" x 21'11"	580 sq. ft	No
9	Bath	7'0" x 9'6"	65 sq. ft	Yes
10	Kitchen	22'8" x 11'2"	265 sq. ft	Yes
11	Room	2'11" x 7'3"	21 sq. ft	No

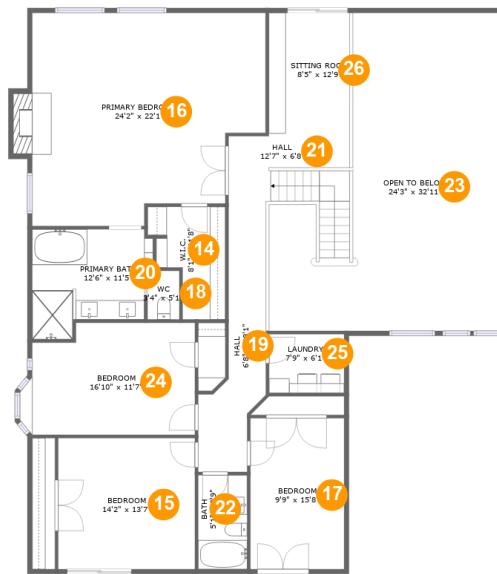
Scan captured on Tue, 15 Oct 2024 05:37:30 GMT

Information is calculated by CubiCasa technology; deemed highly reliable but not guaranteed.

**1285 Beaver Creek Lane, Paso Robles, San Luis
Obispo County, California, United States, 93446**

#	Room name	Dimensions	Area (sqft)	Counted as Living Area
12	Breakfast Nook	22'8" x 8'4"	189 sq. ft	Yes
13	Living Room	25'9" x 26'3"	498 sq. ft	Yes

1285 Beaver Creek Lane, Paso Robles, San Luis Obispo County, California, United States, 93446



Room Dimensions

Floor 2

Total sqft: 2531

Living area: 1884

#	Room name	Dimensions	Area (sqft)	Counted as Living Area
14	W.i.c.	8'1" x 11'8"	71 sq. ft	Yes
15	Bedroom	14'2" x 13'7"	192 sq. ft	Yes
16	Primary Bedroom	24'2" x 22'1"	486 sq. ft	Yes
17	Bedroom	9'9" x 15'8"	152 sq. ft	Yes
18	Wc	3'4" x 5'1"	17 sq. ft	Yes
19	Hall	6'8" x 28'1"	121 sq. ft	Yes
20	Primary Bath	12'6" x 11'5"	120 sq. ft	Yes
21	Hall	12'7" x 6'8"	121 sq. ft	Yes
22	Bath	5'1" x 9'9"	49 sq. ft	Yes
23	Open To Below	24'3" x 32'11"	599 sq. ft	No
24	Bedroom	16'10" x 11'7"	192 sq. ft	Yes

Scan captured on Tue, 15 Oct 2024 05:37:30 GMT

Information is calculated by CubiCasa technology; deemed highly reliable but not guaranteed.

**1285 Beaver Creek Lane, Paso Robles, San Luis
Obispo County, California, United States, 93446**

#	Room name	Dimensions	Area (sqft)	Counted as Living Area
25	Laundry	7'9" x 6'1"	47 sq. ft	Yes
26	Sitting Room	8'5" x 12'9"	111 sq. ft	Yes

1285 Beaver Creek Lane, Paso Robles, San Luis Obispo County, California, United States, 93446

1 Floor 1 - Wine Cellar



Dimensions: 6'5" x 3'1"
Area: 20 sq. ft
Counted as Living Area: No

Heated: No
Finished: No
Enclosed: Yes
Contiguous: Yes
Permitted: Yes
Wet Space: No
Addition: No
Conversion: No

2 Floor 1 - W.i.c.



Dimensions: 7'6" x 4'10"
Area: 36 sq. ft
Counted as Living Area:
Yes

Heated: Yes
Finished: Yes
Enclosed: Yes
Contiguous:
Yes
Permitted: Yes
Wet Space: No
Addition: No
Conversion: No

1285 Beaver Creek Lane, Paso Robles, San Luis Obispo County, California, United States, 93446

3 Floor 1 - Dining Area



Dimensions: 10'2" x 16'0"
Area: 164 sq. ft
Counted as Living Area:
Yes

Heated: Yes
Finished: Yes
Enclosed: Yes
Contiguous:
Yes
Permitted: Yes
Wet Space: No
Addition: No
Conversion: No

4 Floor 1 - Bedroom



Dimensions: 14'2" x 10'5"
Area: 126 sq. ft
Counted as Living Area:
Yes

Heated: Yes
Finished: Yes
Enclosed: Yes
Contiguous:
Yes
Permitted: Yes
Wet Space: No
Addition: No
Conversion: No

5 Floor 1 - Foyer

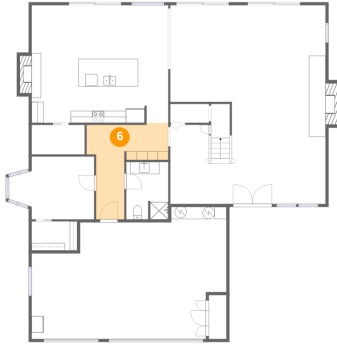


Dimensions: 25'9" x 6'9"
Area: 173 sq. ft
Counted as Living Area:
Yes

Heated: Yes
Finished: Yes
Enclosed: Yes
Contiguous:
Yes
Permitted: Yes
Wet Space: No
Addition: No
Conversion: No

1285 Beaver Creek Lane, Paso Robles, San Luis Obispo County, California, United States, 93446

6 Floor 1 - Hall



Dimensions: 13'7" x 15'8"
Area: 124 sq. ft
Counted as Living Area:
Yes

Heated: Yes
Finished: Yes
Enclosed: Yes
Contiguous:
Yes
Permitted: Yes
Wet Space: No
Addition: No
Conversion: No

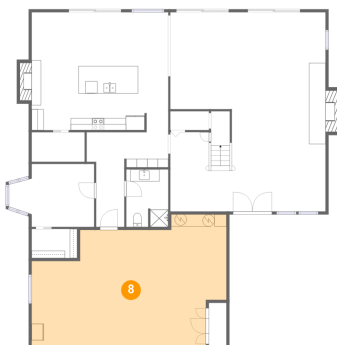
7 Floor 1 - Pantry



Dimensions: 8'9" x 4'11"
Area: 43 sq. ft
Counted as Living Area:
Yes

Heated: Yes
Finished: Yes
Enclosed: Yes
Contiguous:
Yes
Permitted: Yes
Wet Space: No
Addition: No
Conversion: No

8 Floor 1 - Garage



Dimensions: 32'4" x 21'11"
Area: 580 sq. ft
Counted as Living Area: No

Heated: No
Finished: No
Enclosed: Yes
Contiguous: Yes
Permitted: Yes
Wet Space: No
Addition: No
Conversion: No

1285 Beaver Creek Lane, Paso Robles, San Luis Obispo County, California, United States, 93446

9 Floor 1 - Bath



Dimensions: 7'0" x 9'6"
Area: 65 sq. ft
Counted as Living Area:
Yes

Heated: Yes
Finished: Yes
Enclosed: Yes
Contiguous:
Yes
Permitted: Yes
Wet Space: Yes
Addition: No
Conversion: No

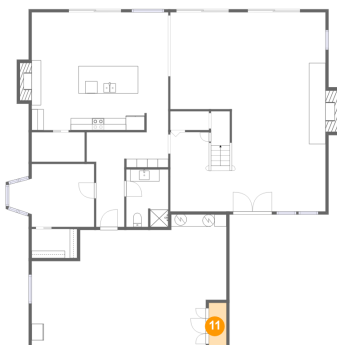
10 Floor 1 - Kitchen



Dimensions: 22'8" x 11'2"
Area: 265 sq. ft
Counted as Living Area:
Yes

Heated: Yes
Finished: Yes
Enclosed: Yes
Contiguous:
Yes
Permitted: Yes
Wet Space: No
Addition: No
Conversion: No

11 Floor 1 - Room

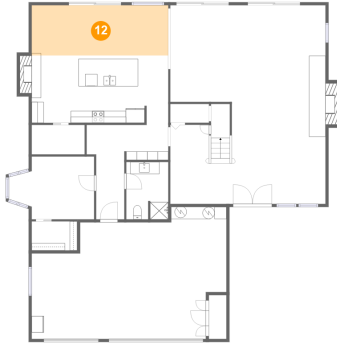


Dimensions: 2'11" x 7'3"
Area: 21 sq. ft
Counted as Living Area: No

Heated: Yes
Finished: Yes
Enclosed: Yes
Contiguous: No
Permitted: Yes
Wet Space: No
Addition: No
Conversion: No

1285 Beaver Creek Lane, Paso Robles, San Luis Obispo County, California, United States, 93446

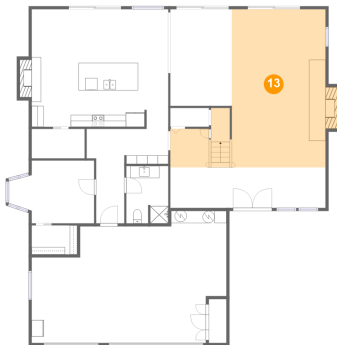
12 Floor 1 - Breakfast Nook



Dimensions: 22'8" x 8'4"
Area: 189 sq. ft
Counted as Living Area:
Yes

Heated: Yes
Finished: Yes
Enclosed: Yes
Contiguous:
Yes
Permitted: Yes
Wet Space: No
Addition: No
Conversion: No

13 Floor 1 - Living Room



Dimensions: 25'9" x 26'3"
Area: 498 sq. ft
Counted as Living Area:
Yes

Heated: Yes
Finished: Yes
Enclosed: Yes
Contiguous:
Yes
Permitted: Yes
Wet Space: No
Addition: No
Conversion: No

14 Floor 2 - W.i.c.

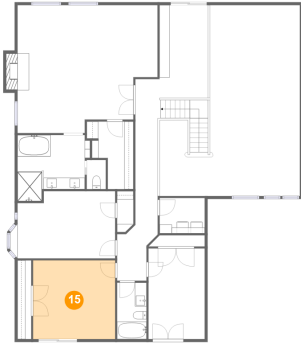


Dimensions: 8'1" x 11'8"
Area: 71 sq. ft
Counted as Living Area:
Yes

Heated: Yes
Finished: Yes
Enclosed: Yes
Contiguous:
Yes
Permitted: Yes
Wet Space: No
Addition: No
Conversion: No

1285 Beaver Creek Lane, Paso Robles, San Luis Obispo County, California, United States, 93446

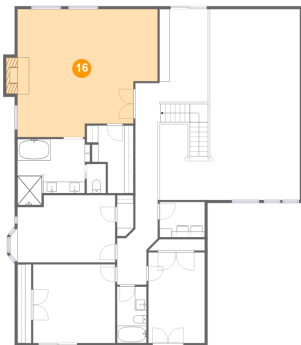
15 Floor 2 - Bedroom



Dimensions: 14'2" x 13'7"
Area: 192 sq. ft
Counted as Living Area:
Yes

Heated: Yes
Finished: Yes
Enclosed: Yes
Contiguous:
Yes
Permitted: Yes
Wet Space: No
Addition: No
Conversion: No

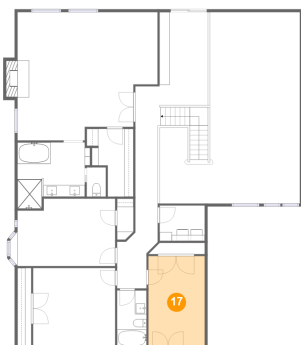
16 Floor 2 - Primary Bedroom



Dimensions: 24'2" x 22'1"
Area: 486 sq. ft
Counted as Living Area:
Yes

Heated: Yes
Finished: Yes
Enclosed: Yes
Contiguous:
Yes
Permitted: Yes
Wet Space: No
Addition: No
Conversion: No

17 Floor 2 - Bedroom

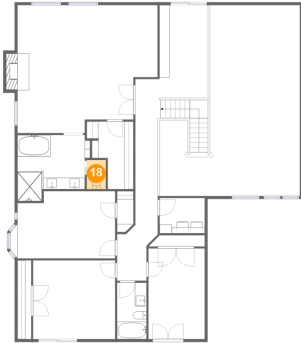


Dimensions: 9'9" x 15'8"
Area: 152 sq. ft
Counted as Living Area:
Yes

Heated: Yes
Finished: Yes
Enclosed: Yes
Contiguous:
Yes
Permitted: Yes
Wet Space: No
Addition: No
Conversion: No

1285 Beaver Creek Lane, Paso Robles, San Luis Obispo County, California, United States, 93446

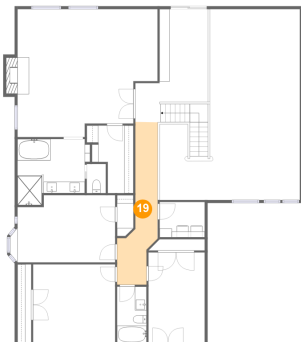
18 Floor 2 - Wc



Dimensions: 3'4" x 5'1"
Area: 17 sq. ft
Counted as Living Area:
Yes

Heated: Yes
Finished: Yes
Enclosed: Yes
Contiguous:
Yes
Permitted: Yes
Wet Space: Yes
Addition: No
Conversion: No

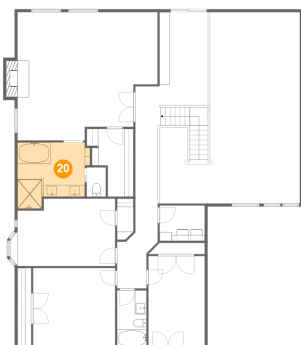
19 Floor 2 - Hall



Dimensions: 6'8" x 28'1"
Area: 121 sq. ft
Counted as Living Area:
Yes

Heated: Yes
Finished: Yes
Enclosed: Yes
Contiguous:
Yes
Permitted: Yes
Wet Space: No
Addition: No
Conversion: No

20 Floor 2 - Primary Bath



Dimensions: 12'6" x 11'5"
Area: 120 sq. ft
Counted as Living Area:
Yes

Heated: Yes
Finished: Yes
Enclosed: Yes
Contiguous:
Yes
Permitted: Yes
Wet Space: Yes
Addition: No
Conversion: No

1285 Beaver Creek Lane, Paso Robles, San Luis Obispo County, California, United States, 93446

21 Floor 2 - Hall



Dimensions: 12'7" x 6'8"
Area: 121 sq. ft
Counted as Living Area:
Yes

Heated: Yes
Finished: Yes
Enclosed: Yes
Contiguous:
Yes
Permitted: Yes
Wet Space: No
Addition: No
Conversion: No

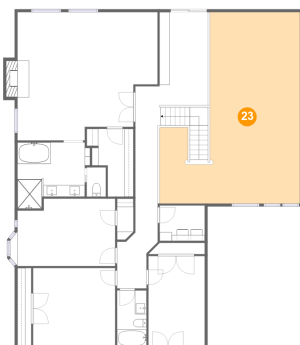
22 Floor 2 - Bath



Dimensions: 5'1" x 9'9"
Area: 49 sq. ft
Counted as Living Area:
Yes

Heated: Yes
Finished: Yes
Enclosed: Yes
Contiguous:
Yes
Permitted: Yes
Wet Space: Yes
Addition: No
Conversion: No

23 Floor 2 - Open To Below

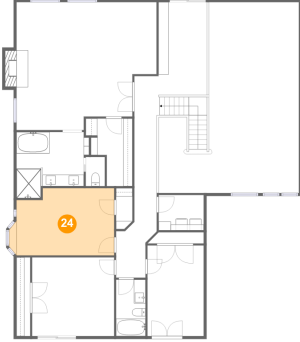


Dimensions: 24'3" x 32'11"
Area: 599 sq. ft
Counted as Living Area: No

Heated: No
Finished: No
Enclosed: No
Contiguous: Yes
Permitted: No
Wet Space: No
Addition: No
Conversion: No

1285 Beaver Creek Lane, Paso Robles, San Luis Obispo County, California, United States, 93446

24 Floor 2 - Bedroom



Dimensions: 16'10" x 11'7"
Area: 192 sq. ft
Counted as Living Area:
Yes

Heated: Yes
Finished: Yes
Enclosed: Yes
Contiguous:
Yes
Permitted: Yes
Wet Space: No
Addition: No
Conversion: No

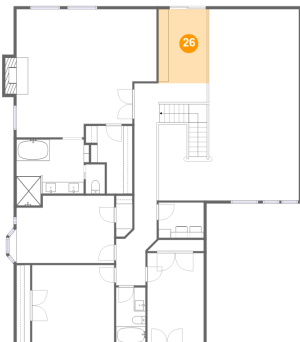
25 Floor 2 - Laundry



Dimensions: 7'9" x 6'1"
Area: 47 sq. ft
Counted as Living Area:
Yes

Heated: Yes
Finished: Yes
Enclosed: Yes
Contiguous:
Yes
Permitted: Yes
Wet Space: No
Addition: No
Conversion: No

26 Floor 2 - Sitting Room



Dimensions: 8'5" x 12'9"
Area: 111 sq. ft
Counted as Living Area:
Yes

Heated: Yes
Finished: Yes
Enclosed: Yes
Contiguous:
Yes
Permitted: Yes
Wet Space: No
Addition: No
Conversion: No