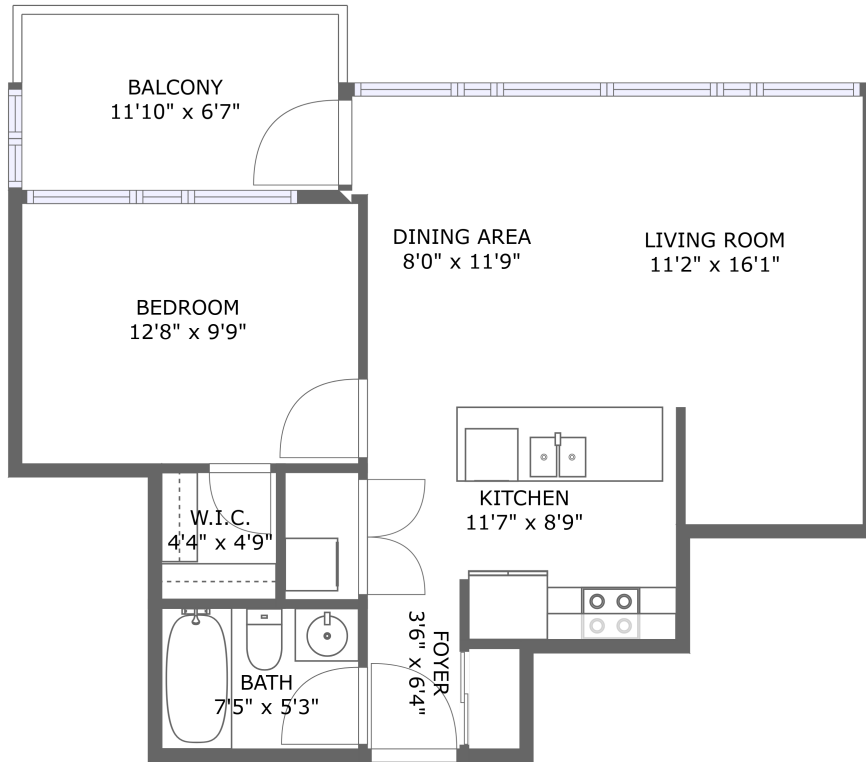


4065 Brickstone Mews, Parkside Village, Mississauga, Peel County, Ontario, Canada, L5B




FLOOR 1


Property Summary

 **1** floors

 **1** bedrooms

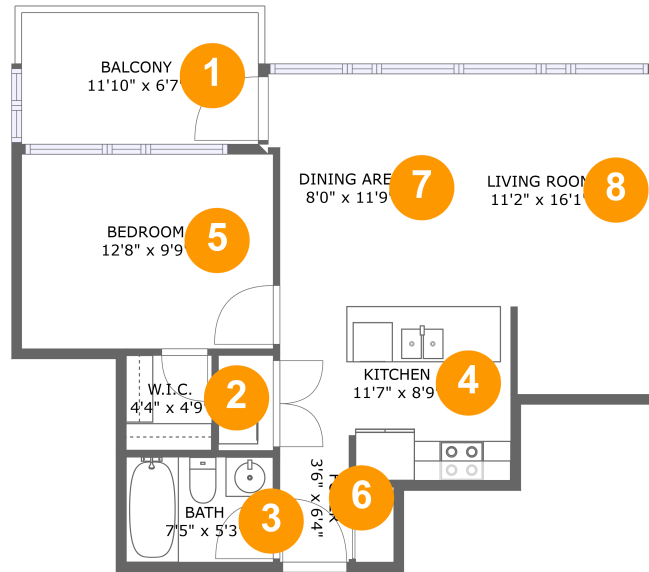
 **1** bathrooms

 **666** total sqft

 **0** garages

 **587** Gross Living Area sqft

4065 Brickstone Mews, Parkside Village, Mississauga, Peel County, Ontario, Canada, L5B



Room Dimensions

Floor 1

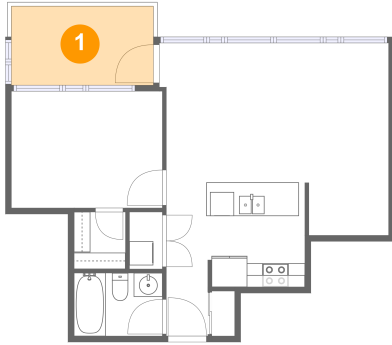
Total sqft: 666

Living area: 587

#	Room name	Dimensions	Area (sqft)	Counted as Living Area
1	Balcony	11'10" x 6'7"	79 sq. ft	No
2	W.i.c.	4'4" x 4'9"	21 sq. ft	Yes
3	Bath	7'5" x 5'3"	39 sq. ft	Yes
4	Kitchen	11'7" x 8'9"	93 sq. ft	Yes
5	Bedroom	12'8" x 9'9"	124 sq. ft	Yes
6	Foyer	3'6" x 6'4"	22 sq. ft	Yes
7	Dining Area	8'0" x 11'9"	89 sq. ft	Yes
8	Living Room	11'2" x 16'1"	161 sq. ft	Yes

4065 Brickstone Mews, Parkside Village, Mississauga, Peel County, Ontario, Canada, L5B

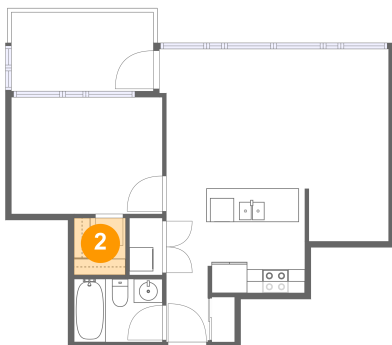
1 Floor 1 - Balcony



Dimensions: 11'10" x 6'7"
Area: 79 sq. ft
Counted as Living Area: No

Heated: No
Finished: Yes
Enclosed: No
Contiguous: Yes
Permitted: Yes
Wet Space: No
Addition: No
Conversion: No

2 Floor 1 - W.i.c.

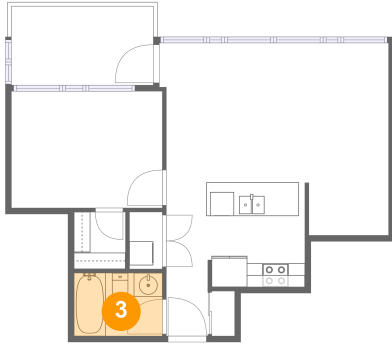


Dimensions: 4'4" x 4'9"
Area: 21 sq. ft
Counted as Living Area:
Yes

Heated: Yes
Finished: Yes
Enclosed: Yes
Contiguous:
Yes
Permitted: Yes
Wet Space: No
Addition: No
Conversion: No

4065 Brickstone Mews, Parkside Village, Mississauga, Peel County, Ontario, Canada, L5B

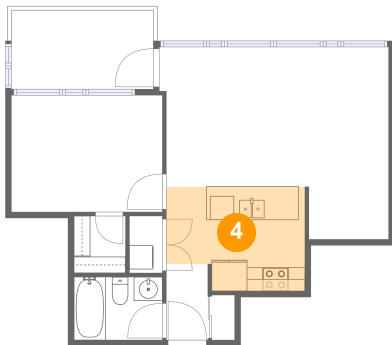
3 Floor 1 - Bath



Dimensions: 7'5" x 5'3"
Area: 39 sq. ft
Counted as Living Area:
Yes

Heated: Yes
Finished: Yes
Enclosed: Yes
Contiguous:
Yes
Permitted: Yes
Wet Space: Yes
Addition: No
Conversion: No

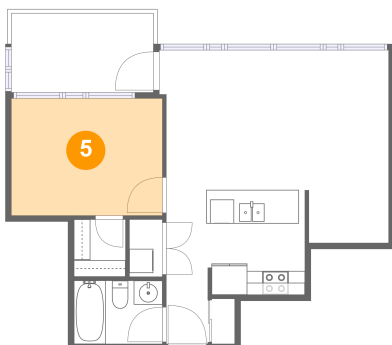
4 Floor 1 - Kitchen



Dimensions: 11'7" x 8'9"
Area: 93 sq. ft
Counted as Living Area:
Yes

Heated: Yes
Finished: Yes
Enclosed: Yes
Contiguous:
Yes
Permitted: Yes
Wet Space: No
Addition: No
Conversion: No

5 Floor 1 - Bedroom

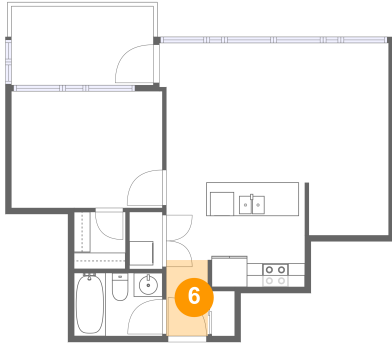


Dimensions: 12'8" x 9'9"
Area: 124 sq. ft
Counted as Living Area:
Yes

Heated: Yes
Finished: Yes
Enclosed: Yes
Contiguous:
Yes
Permitted: Yes
Wet Space: No
Addition: No
Conversion: No

4065 Brickstone Mews, Parkside Village, Mississauga, Peel County, Ontario, Canada, L5B

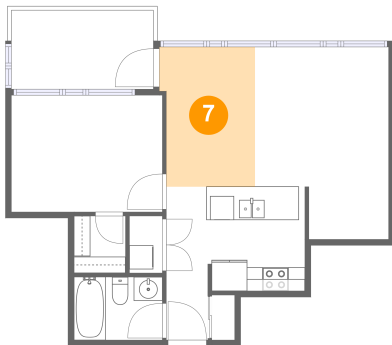
6 Floor 1 - Foyer



Dimensions: 3'6" x 6'4"
Area: 22 sq. ft
Counted as Living Area:
Yes

Heated: Yes
Finished: Yes
Enclosed: Yes
Contiguous:
Yes
Permitted: Yes
Wet Space: No
Addition: No
Conversion: No

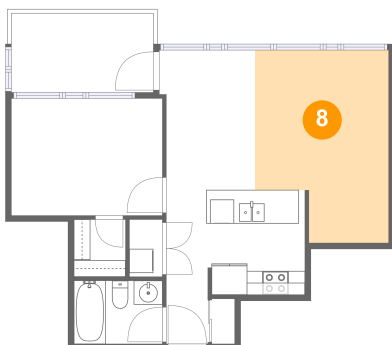
7 Floor 1 - Dining Area



Dimensions: 8'0" x 11'9"
Area: 89 sq. ft
Counted as Living Area:
Yes

Heated: Yes
Finished: Yes
Enclosed: Yes
Contiguous:
Yes
Permitted: Yes
Wet Space: No
Addition: No
Conversion: No

8 Floor 1 - Living Room



Dimensions: 11'2" x 16'1"
Area: 161 sq. ft
Counted as Living Area:
Yes

Heated: Yes
Finished: Yes
Enclosed: Yes
Contiguous:
Yes
Permitted: Yes
Wet Space: No
Addition: No
Conversion: No