

# 366 Windward Island Road, Clearwater Beach, Pinellas County, Florida, United States, 33767

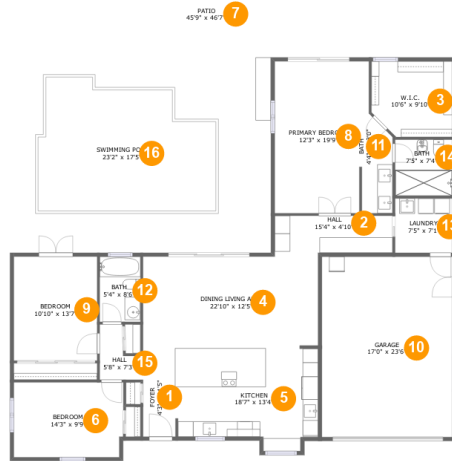


## Property Summary

 **1** garages  **3** bedrooms  **2** bathrooms  **0** half baths

 **1** floors  **1,666** Gross Living Area sqft  **3,153** total sqft

# 366 Windward Island Road, Clearwater Beach, Pinellas County, Florida, United States, 33767



## Room Dimensions

Floor 1

Total sqft: 3153

Living area: 1666

#	Room name	Dimensions	Area (sqft)	Counted as Living Area
1	Foyer	4'3" x 11'5"	48 sq. ft	Yes
2	Hall	15'4" x 4'10"	74 sq. ft	Yes
3	W.i.c.	10'6" x 9'10"	99 sq. ft	Yes
4	Dining Living Area	22'10" x 12'5"	275 sq. ft	Yes
5	Kitchen	18'7" x 13'4"	221 sq. ft	Yes
6	Bedroom	14'3" x 9'9"	138 sq. ft	Yes
7	Patio	45'9" x 46'7"	1413 sq. ft	No
8	Primary Bedroom	12'3" x 19'9"	227 sq. ft	Yes
9	Bedroom	10'10" x 13'7"	147 sq. ft	Yes
10	Garage	17'0" x 23'6"	399 sq. ft	No
11	Bath	4'4" x 13'0"	49 sq. ft	Yes

**366 Windward Island Road, Clearwater Beach,  
Pinellas County, Florida, United States, 33767**

#	Room name	Dimensions	Area (sqft)	Counted as Living Area
12	Bath	5'4" x 8'6"	45 sq. ft	Yes
13	Laundry	7'5" x 7'1"	53 sq. ft	Yes
14	Bath	7'5" x 7'4"	54 sq. ft	Yes
15	Hall	5'8" x 7'3"	30 sq. ft	Yes
16	Swimming Pool	23'2" x 17'5"	345 sq. ft	No

# 366 Windward Island Road, Clearwater Beach, Pinellas County, Florida, United States, 33767

## 1 Floor 1 - Foyer



Dimensions: 4'3" x 11'5"  
Area: 48 sq. ft  
Counted as Living Area:  
Yes

Heated: Yes  
Finished: Yes  
Enclosed: Yes  
Contiguous:  
Yes  
Permitted: Yes  
Wet Space: No  
Addition: No  
Conversion: No

## 2 Floor 1 - Hall



Dimensions: 15'4" x 4'10"  
Area: 74 sq. ft  
Counted as Living Area:  
Yes

Heated: Yes  
Finished: Yes  
Enclosed: Yes  
Contiguous:  
Yes  
Permitted: Yes  
Wet Space: No  
Addition: No  
Conversion: No

# 366 Windward Island Road, Clearwater Beach, Pinellas County, Florida, United States, 33767

## 3 Floor 1 - W.i.c.



Dimensions: 10'6" x 9'10"  
Area: 99 sq. ft  
Counted as Living Area:  
Yes

Heated: Yes  
Finished: Yes  
Enclosed: Yes  
Contiguous:  
Yes  
Permitted: Yes  
Wet Space: No  
Addition: No  
Conversion: No

## 4 Floor 1 - Dining Living Area



Dimensions: 22'10" x 12'5"  
Area: 275 sq. ft  
Counted as Living Area:  
Yes

Heated: Yes  
Finished: Yes  
Enclosed: Yes  
Contiguous:  
Yes  
Permitted: Yes  
Wet Space: No  
Addition: No  
Conversion: No

## 5 Floor 1 - Kitchen



Dimensions: 18'7" x 13'4"  
Area: 221 sq. ft  
Counted as Living Area:  
Yes

Heated: Yes  
Finished: Yes  
Enclosed: Yes  
Contiguous:  
Yes  
Permitted: Yes  
Wet Space: No  
Addition: No  
Conversion: No

# 366 Windward Island Road, Clearwater Beach, Pinellas County, Florida, United States, 33767

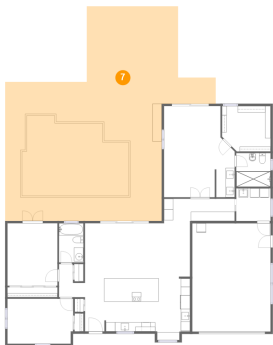
## 6 Floor 1 - Bedroom



Dimensions: 14'3" x 9'9"  
Area: 138 sq. ft  
Counted as Living Area:  
Yes

Heated: Yes  
Finished: Yes  
Enclosed: Yes  
Contiguous:  
Yes  
Permitted: Yes  
Wet Space: No  
Addition: No  
Conversion: No

## 7 Floor 1 - Patio



Dimensions: 45'9" x 46'7"  
Area: 1413 sq. ft  
Counted as Living Area: No

Heated: No  
Finished: Yes  
Enclosed: No  
Contiguous: Yes  
Permitted: Yes  
Wet Space: No  
Addition: No  
Conversion: No

## 8 Floor 1 - Primary Bedroom

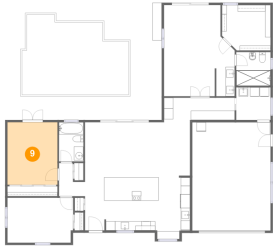


Dimensions: 12'3" x 19'9"  
Area: 227 sq. ft  
Counted as Living Area:  
Yes

Heated: Yes  
Finished: Yes  
Enclosed: Yes  
Contiguous:  
Yes  
Permitted: Yes  
Wet Space: No  
Addition: No  
Conversion: No

# 366 Windward Island Road, Clearwater Beach, Pinellas County, Florida, United States, 33767

## 9 Floor 1 - Bedroom



Dimensions: 10'10" x 13'7"  
Area: 147 sq. ft  
Counted as Living Area:  
Yes

Heated: Yes  
Finished: Yes  
Enclosed: Yes  
Contiguous:  
Yes  
Permitted: Yes  
Wet Space: No  
Addition: No  
Conversion: No

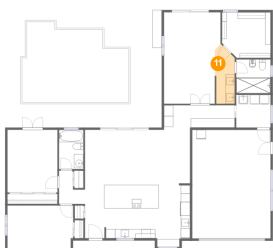
## 10 Floor 1 - Garage



Dimensions: 17'0" x 23'6"  
Area: 399 sq. ft  
Counted as Living Area: No

Heated: No  
Finished: No  
Enclosed: Yes  
Contiguous: Yes  
Permitted: Yes  
Wet Space: No  
Addition: No  
Conversion: No

## 11 Floor 1 - Bath



Dimensions: 4'4" x 13'0"  
Area: 49 sq. ft  
Counted as Living Area:  
Yes

Heated: Yes  
Finished: Yes  
Enclosed: Yes  
Contiguous:  
Yes  
Permitted: Yes  
Wet Space: Yes  
Addition: No  
Conversion: No

# 366 Windward Island Road, Clearwater Beach, Pinellas County, Florida, United States, 33767

## 12 Floor 1 - Bath



Dimensions: 5'4" x 8'6"  
Area: 45 sq. ft  
Counted as Living Area:  
Yes

Heated: Yes  
Finished: Yes  
Enclosed: Yes  
Contiguous:  
Yes  
Permitted: Yes  
Wet Space: Yes  
Addition: No  
Conversion: No

## 13 Floor 1 - Laundry



Dimensions: 7'5" x 7'1"  
Area: 53 sq. ft  
Counted as Living Area:  
Yes

Heated: Yes  
Finished: Yes  
Enclosed: Yes  
Contiguous:  
Yes  
Permitted: Yes  
Wet Space: No  
Addition: No  
Conversion: No

## 14 Floor 1 - Bath



Dimensions: 7'5" x 7'4"  
Area: 54 sq. ft  
Counted as Living Area:  
Yes

Heated: Yes  
Finished: Yes  
Enclosed: Yes  
Contiguous:  
Yes  
Permitted: Yes  
Wet Space: Yes  
Addition: No  
Conversion: No



# 366 Windward Island Road, Clearwater Beach, Pinellas County, Florida, United States, 33767

## 15 Floor 1 - Hall



Dimensions: 5'8" x 7'3"  
Area: 30 sq. ft  
Counted as Living Area:  
Yes

Heated: Yes  
Finished: Yes  
Enclosed: Yes  
Contiguous:  
Yes  
Permitted: Yes  
Wet Space: No  
Addition: No  
Conversion: No

## 16 Floor 1 - Swimming Pool



Dimensions: 23'2" x 17'5"  
Area: 345 sq. ft  
Counted as Living Area: No

Heated: No  
Finished: No  
Enclosed: No  
Contiguous: Yes  
Permitted: No  
Wet Space: No  
Addition: No  
Conversion: No