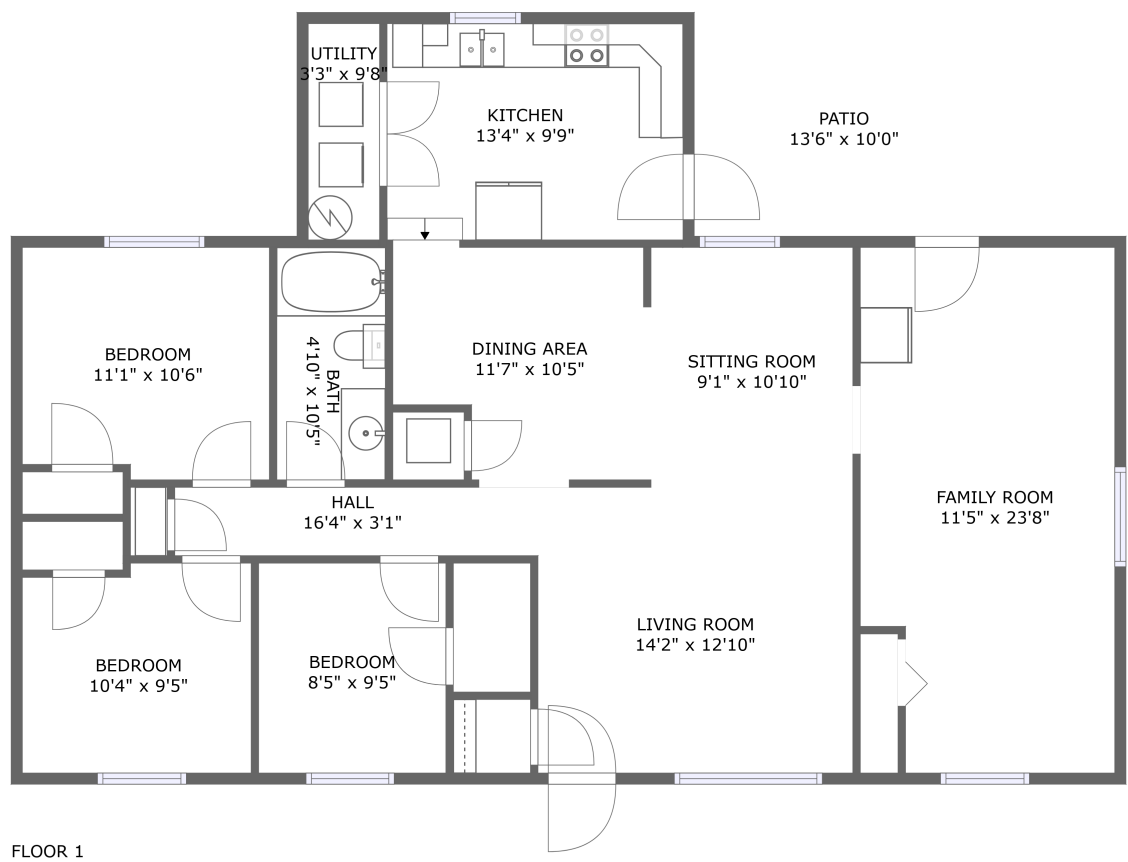


Home report

931 Ingleside Lane, Salem, Salem city, Virginia, United States, 24153




Total GLA: 1416 sq. ft

Floor 1: 1416 sq. ft

Excluded: Patio 136 sq. ft

Property summary

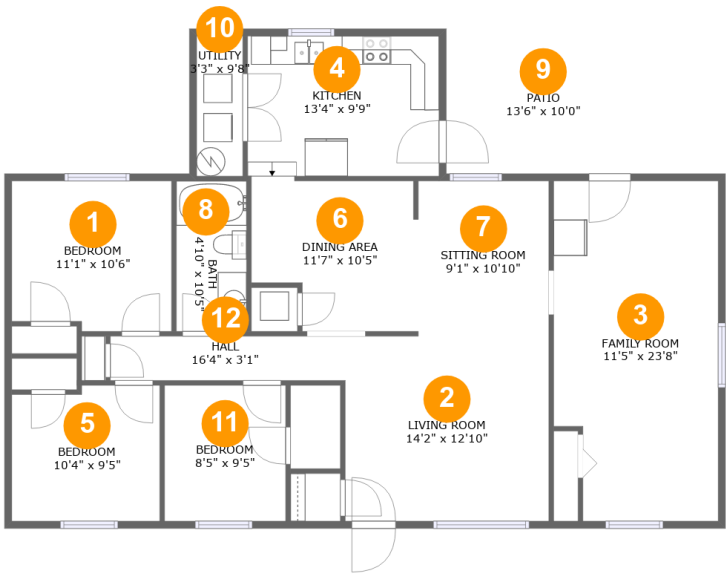
 1 Floors

 3 Bedrooms

 1 Bathrooms

Home report

931 Ingleside Lane, Salem, Salem city, Virginia, United States, 24153



Room dimensions

Floor 1 Total:1416sqft Excluded: 136sqft

#		Max Dimensions	sqft	Included
1	Bedroom	11'1" x 10'6"	113 sq. ft	Yes
2	Living Room	14'2" x 12'10"	182 sq. ft	Yes
3	Family Room	11'5" x 23'8"	257 sq. ft	Yes
4	Kitchen	13'4" x 9'9"	130 sq. ft	Yes
5	Bedroom	10'4" x 9'5"	94 sq. ft	Yes
6	Dining Area	11'7" x 10'5"	110 sq. ft	Yes
7	Sitting Room	9'1" x 10'10"	98 sq. ft	Yes
8	Bath	4'10" x 10'5"	51 sq. ft	Yes
9	Patio	13'6" x 10'0"	136 sq. ft	No
10	Utility	3'3" x 9'8"	31 sq. ft	Yes
11	Bedroom	8'5" x 9'5"	80 sq. ft	Yes

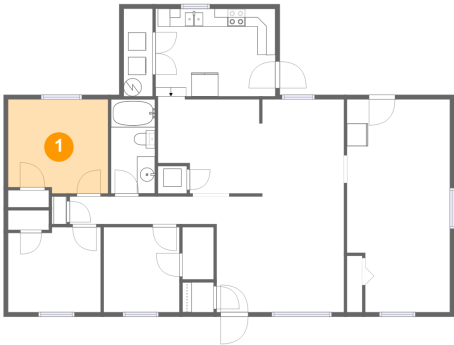
Home report

931 Ingleside Lane, Salem, Salem city, Virginia, United States,
24153

#		Max Dimensions	sqft	Included
12	Hall	16'4" x 3'1"	50 sq. ft	Yes

931 Ingleside Lane, Salem, Salem city, Virginia, United States, 24153

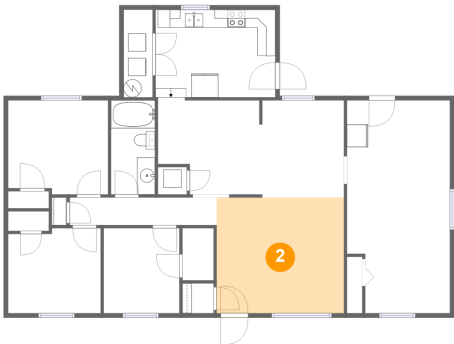
1 Floor 1 - Bedroom



Max Dimensions: 11'1" x 10'6"
Calculated Area: 113 sq. ft
Included: Yes

Heated: Yes
Finished: Yes
Enclosed: Yes
Contiguous: Yes
Permitted: Yes
Wet space: No
Addition: No
Conversion: No

2 Floor 1 - Living Room

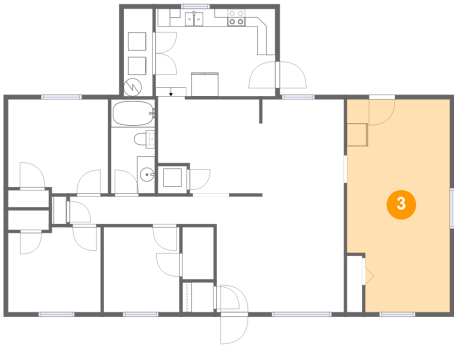


Max Dimensions: 14'2" x 12'10"
Calculated Area: 182 sq. ft
Included: Yes

Heated: Yes
Finished: Yes
Enclosed: Yes
Contiguous: Yes
Permitted: Yes
Wet space: No
Addition: No
Conversion: No

931 Ingleside Lane, Salem, Salem city, Virginia, United States, 24153

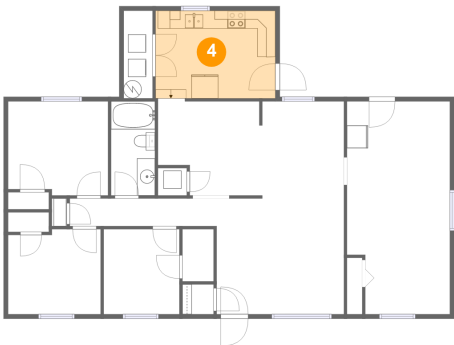
3 Floor 1 - Family Room



Max Dimensions: 11'5" x 23'8"
Calculated Area: 257 sq. ft
Included: Yes

Heated: Yes
Finished: Yes
Enclosed: Yes
Contiguous: Yes
Permitted: Yes
Wet space: No
Addition: No
Conversion: No

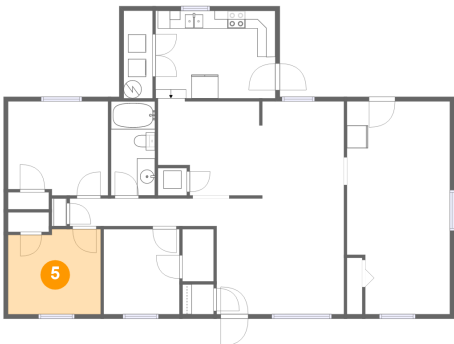
4 Floor 1 - Kitchen



Max Dimensions: 13'4" x 9'9"
Calculated Area: 130 sq. ft
Included: Yes

Heated: Yes
Finished: Yes
Enclosed: Yes
Contiguous: Yes
Permitted: Yes
Wet space: No
Addition: No
Conversion: No

5 Floor 1 - Bedroom

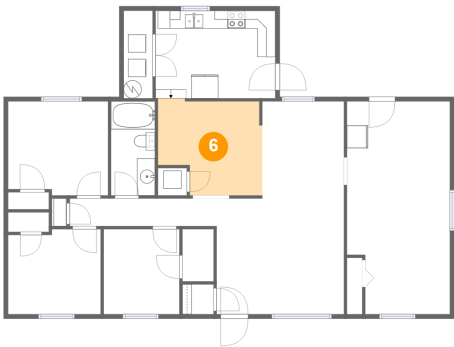


Max Dimensions: 10'4" x 9'5"
Calculated Area: 94 sq. ft
Included: Yes

Heated: Yes
Finished: Yes
Enclosed: Yes
Contiguous: Yes
Permitted: Yes
Wet space: No
Addition: No
Conversion: No

931 Ingleside Lane, Salem, Salem city, Virginia, United States, 24153

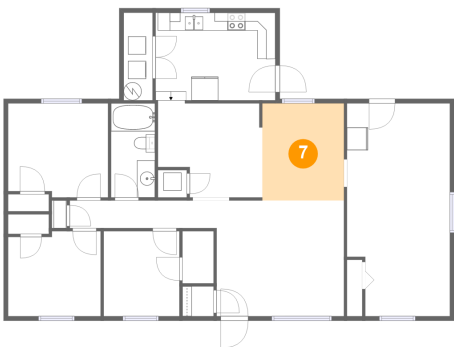
6 Floor 1 - Dining Area



Max Dimensions: 11'7" x 10'5"
Calculated Area: 110 sq. ft
Included: Yes

Heated: Yes
Finished: Yes
Enclosed: Yes
Contiguous: Yes
Permitted: Yes
Wet space: No
Addition: No
Conversion: No

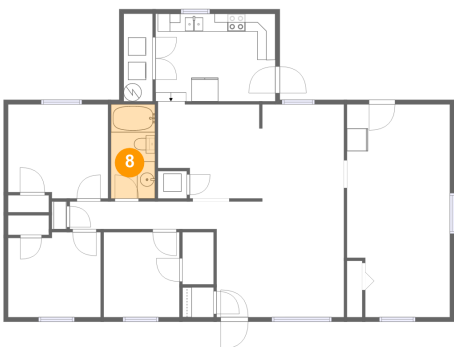
7 Floor 1 - Sitting Room



Max Dimensions: 9'1" x 10'10"
Calculated Area: 98 sq. ft
Included: Yes

Heated: Yes
Finished: Yes
Enclosed: Yes
Contiguous: Yes
Permitted: Yes
Wet space: No
Addition: No
Conversion: No

8 Floor 1 - Bath

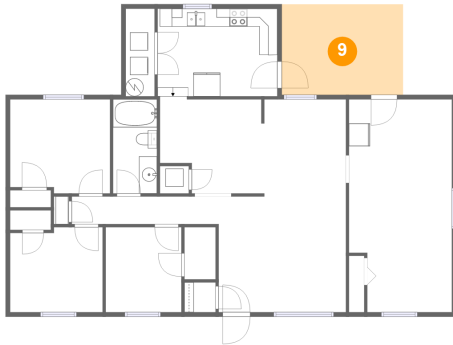


Max Dimensions: 4'10" x 10'5"
Calculated Area: 51 sq. ft
Included: Yes

Heated: Yes
Finished: Yes
Enclosed: Yes
Contiguous: Yes
Permitted: Yes
Wet space: Yes
Addition: No
Conversion: No

931 Ingleside Lane, Salem, Salem city, Virginia, United States,
24153

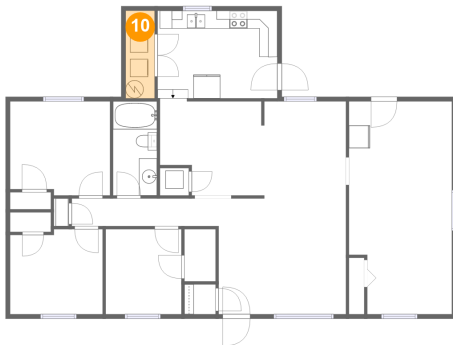
9 Floor 1 - Patio



Max Dimensions: 13'6" x 10'0"
Calculated Area: 136 sq. ft
Included: No

Heated: No
Finished: Yes
Enclosed: No
Contiguous: Yes
Permitted: Yes
Wet space: No
Addition: No
Conversion: No

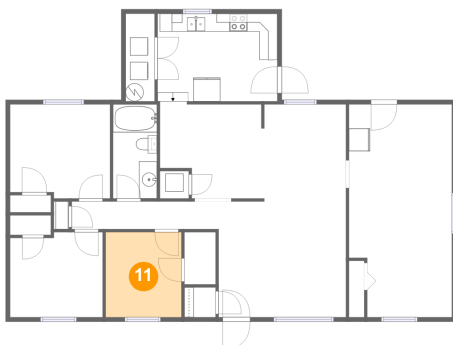
10 Floor 1 - Utility



Max Dimensions: 3'3" x 9'8"
Calculated Area: 31 sq. ft
Included: Yes

Heated: Yes
Finished: Yes
Enclosed: Yes
Contiguous: Yes
Permitted: Yes
Wet space: No
Addition: No
Conversion: No

11 Floor 1 - Bedroom

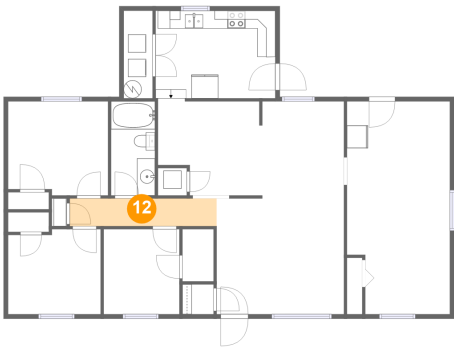


Max Dimensions: 8'5" x 9'5"
Calculated Area: 80 sq. ft
Included: Yes

Heated: Yes
Finished: Yes
Enclosed: Yes
Contiguous: Yes
Permitted: Yes
Wet space: No
Addition: No
Conversion: No

931 Ingleside Lane, Salem, Salem city, Virginia, United States, 24153

12 Floor 1 - Hall



Max Dimensions: 16'4" x 3'1"
Calculated Area: 50 sq. ft
Included: Yes

Heated: Yes
Finished: Yes
Enclosed: Yes
Contiguous: Yes
Permitted: Yes
Wet space: No
Addition: No
Conversion: No