

**TOTAL: 2297 sq. ft**

FLOOR 1: 722 sq. ft, FLOOR 2: 1575 sq. ft

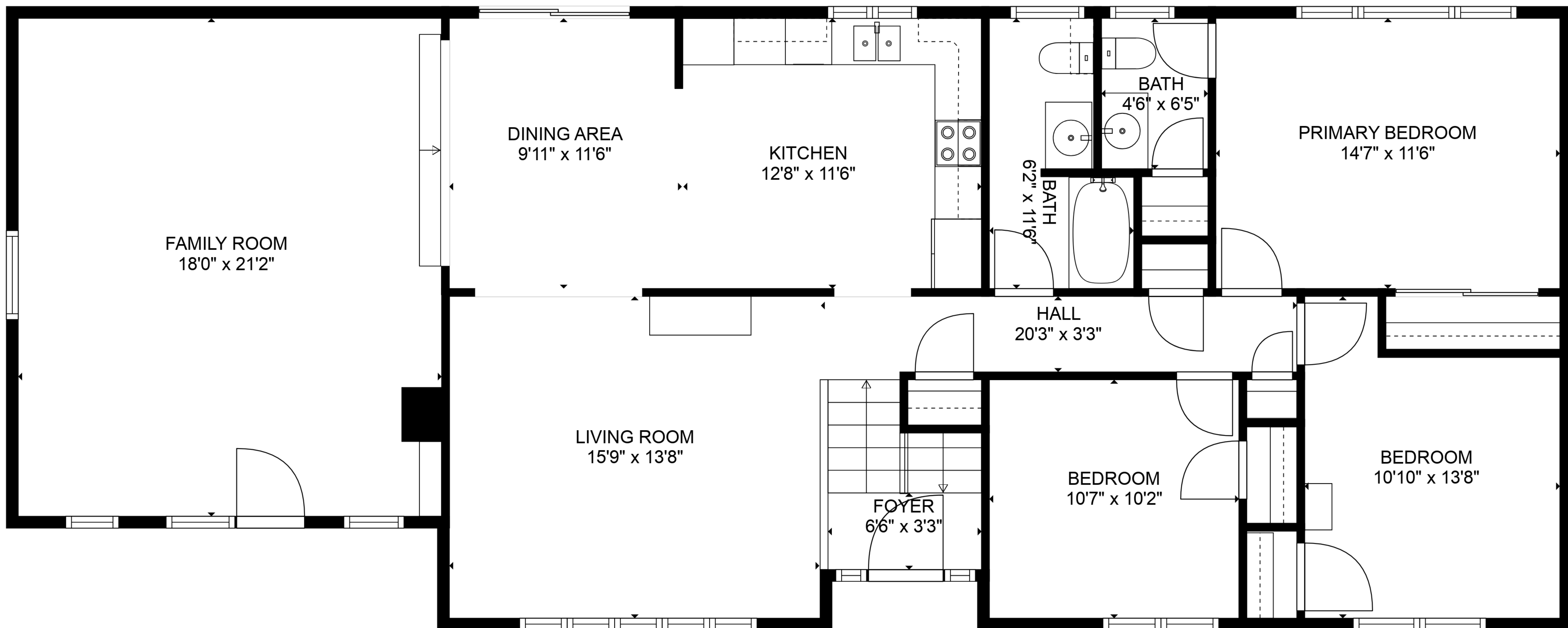
EXCLUDED AREAS: STORAGE SHED: 218 sq. ft, UTILITY: 81 sq. ft, BASEMENT: 322 sq. ft,

WORKSHOP: 366 sq. ft, GARAGE: 313 sq. ft

WALLS: 233 sq. ft



Floor Plans are provided by HouseSnappers.com. Measurements are deemed highly reliable but not guaranteed.



**TOTAL: 2297 sq. ft**

FLOOR 1: 722 sq. ft, FLOOR 2: 1575 sq. ft

EXCLUDED AREAS: STORAGE SHED: 218 sq. ft, UTILITY: 81 sq. ft, BASEMENT: 322 sq. ft,

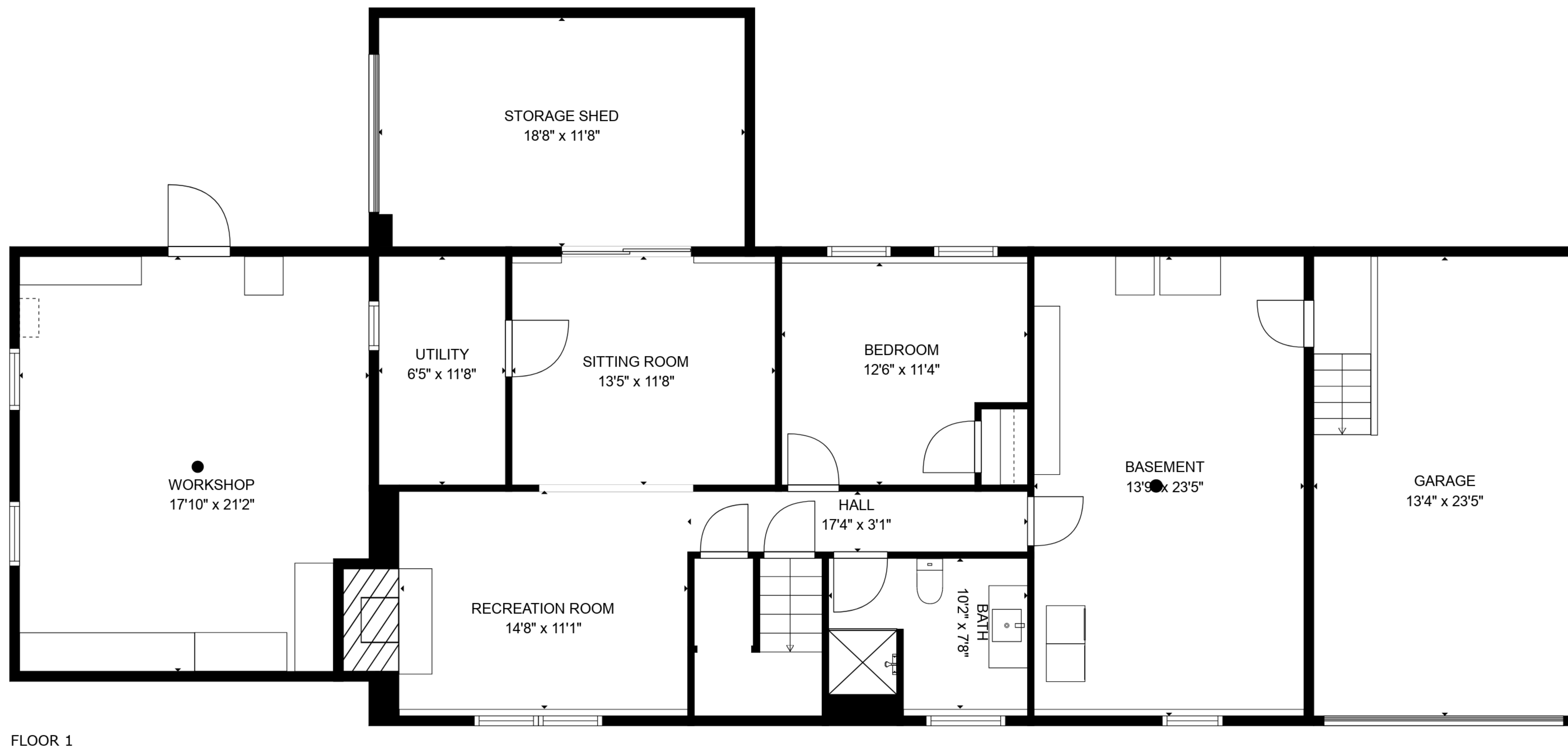
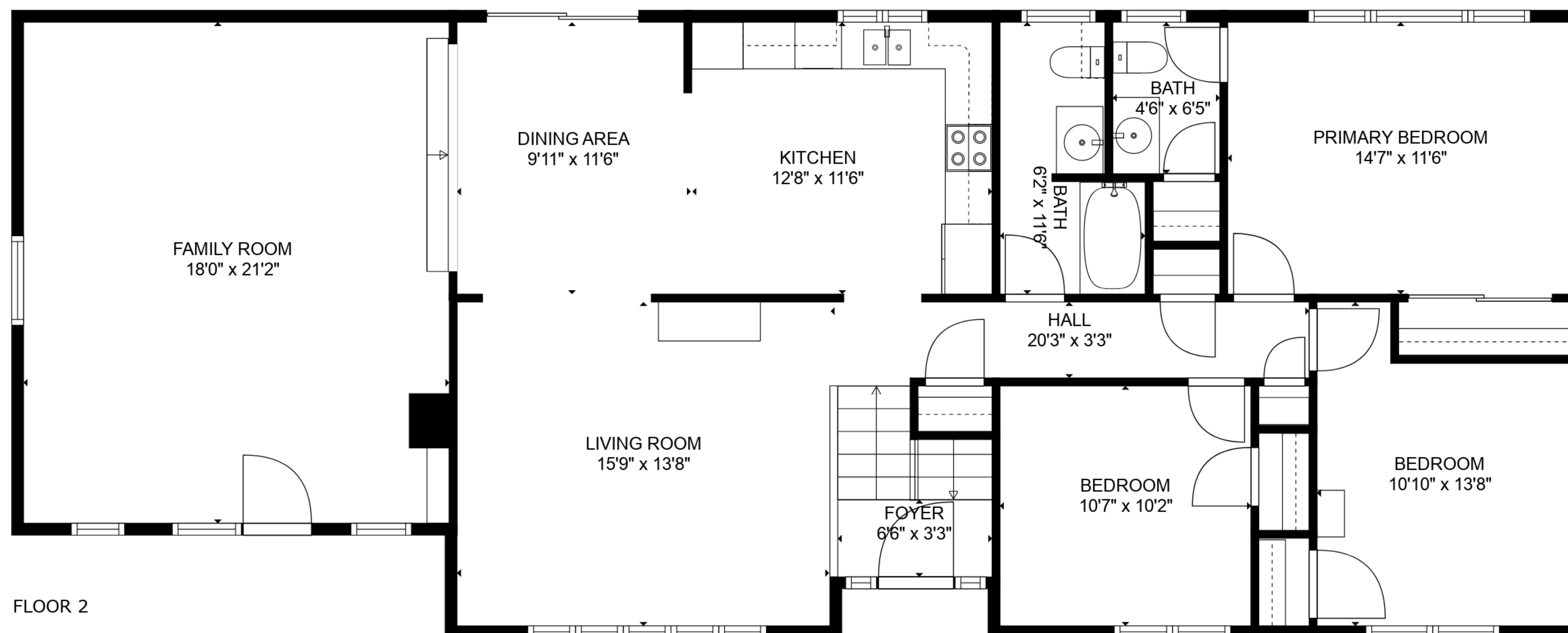
WORKSHOP: 366 sq. ft, GARAGE: 313 sq. ft

WALLS: 233 sq. ft



Floor Plans are provided by HouseSnappers.com. Measurements are deemed highly reliable but not guaranteed.





**TOTAL: 2297 sq. ft**

FLOOR 1: 722 sq. ft, FLOOR 2: 1575 sq. ft

EXCLUDED AREAS: STORAGE SHED: 218 sq. ft, UTILITY: 81 sq. ft, BASEMENT: 322 sq. ft,  
WORKSHOP: 366 sq. ft, GARAGE: 313 sq. ft  
WALLS: 233 sq. ft



Floor Plans are provided by HouseSnappers.com. Measurements are deemed highly reliable but not guaranteed.