

Recreation Room
16'5" x 9'11"

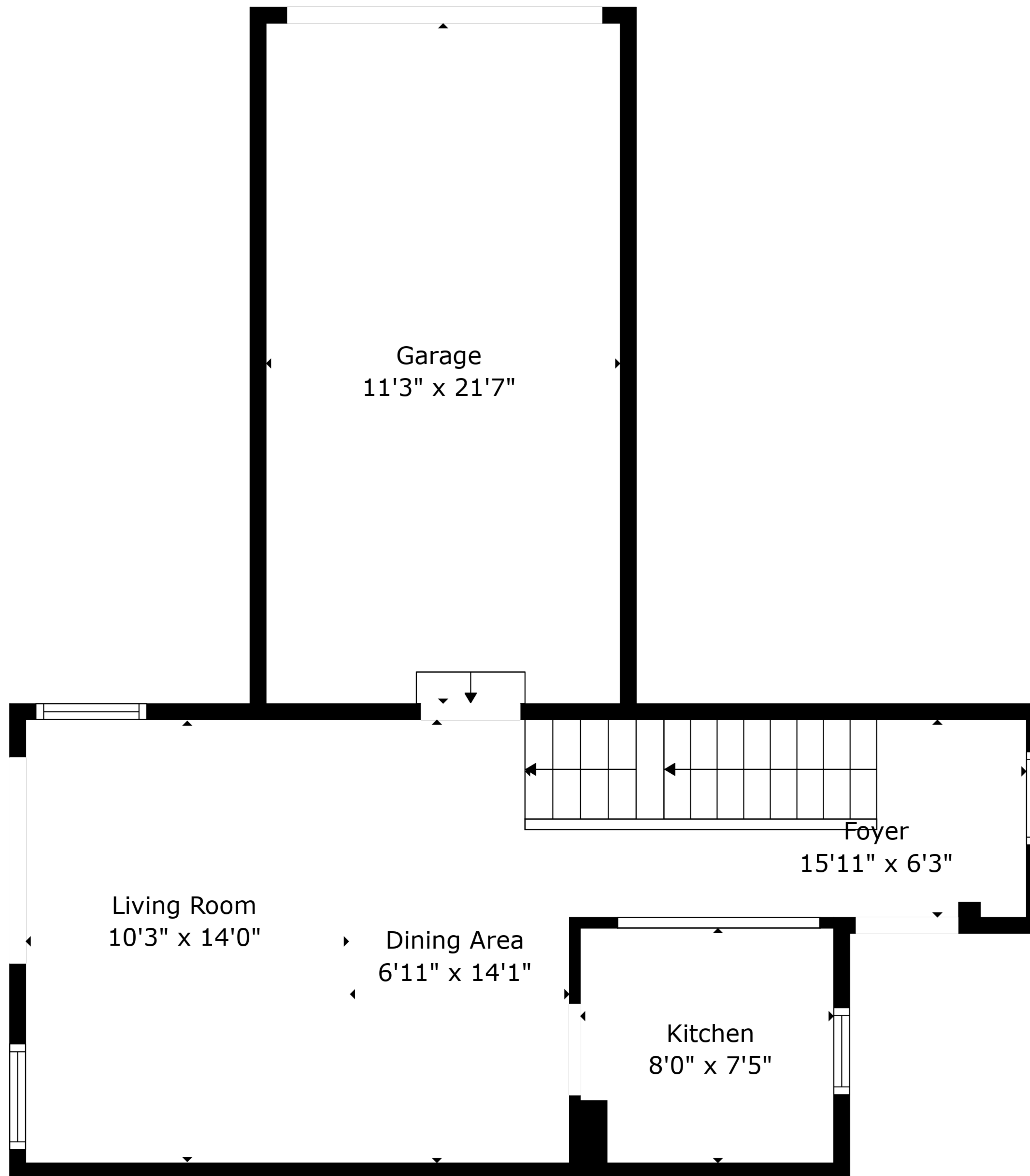
Hall
15'10" x 6'1"

Bath
6'1" x 5'3"

TOTAL: 1123 sq. ft

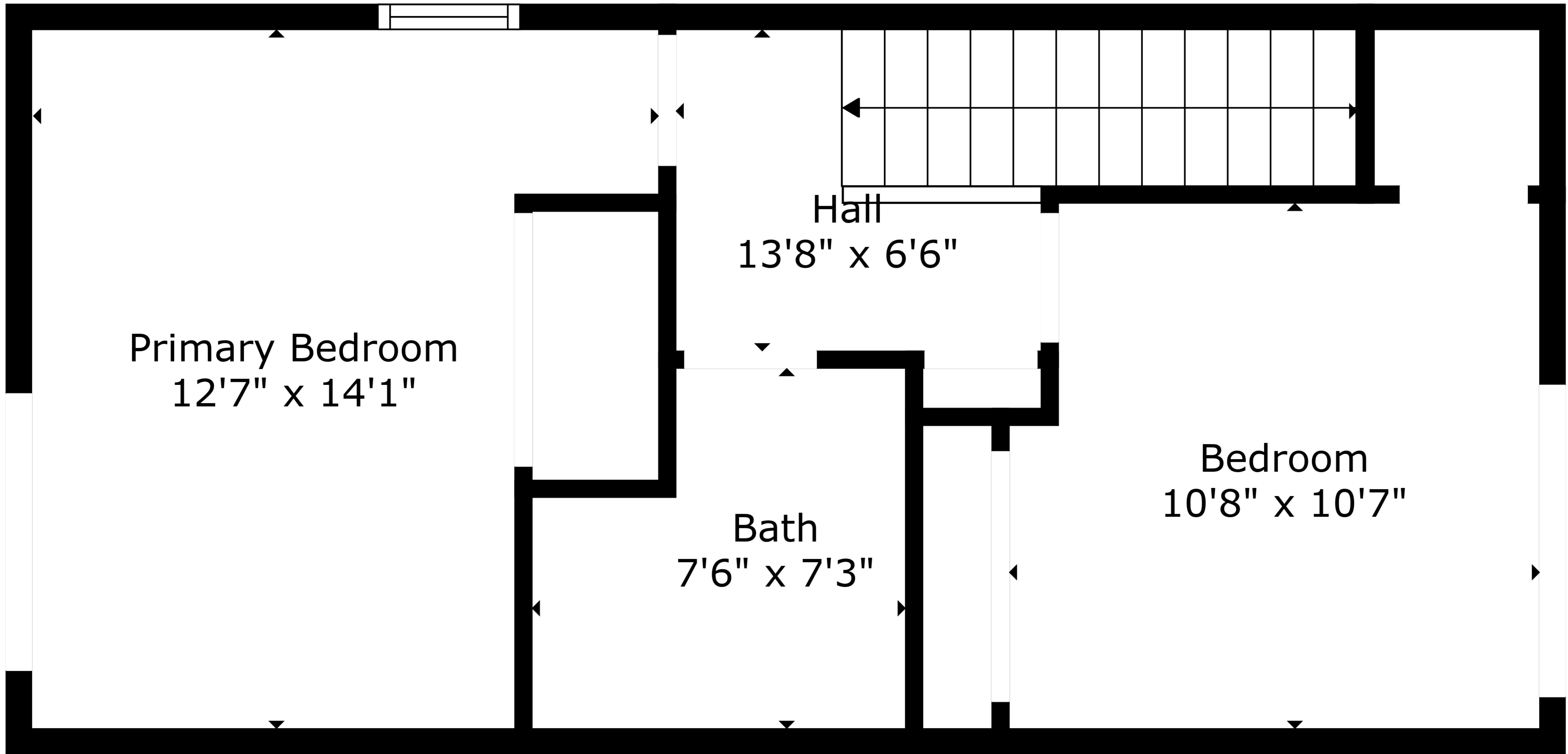
BELOW GROUND: 299 sq. ft, FLOOR 2: 398 sq. ft, FLOOR 3: 426 sq. ft
EXCLUDED AREAS: GARAGE: 242 sq. ft

Created By Nordy Photography. Calculations Deemed Highly Reliable But Not Guaranteed.



TOTAL: 1123 sq. ft
BELOW GROUND: 299 sq. ft, FLOOR 2: 398 sq. ft, FLOOR 3: 426 sq. ft
EXCLUDED AREAS: GARAGE: 242 sq. ft

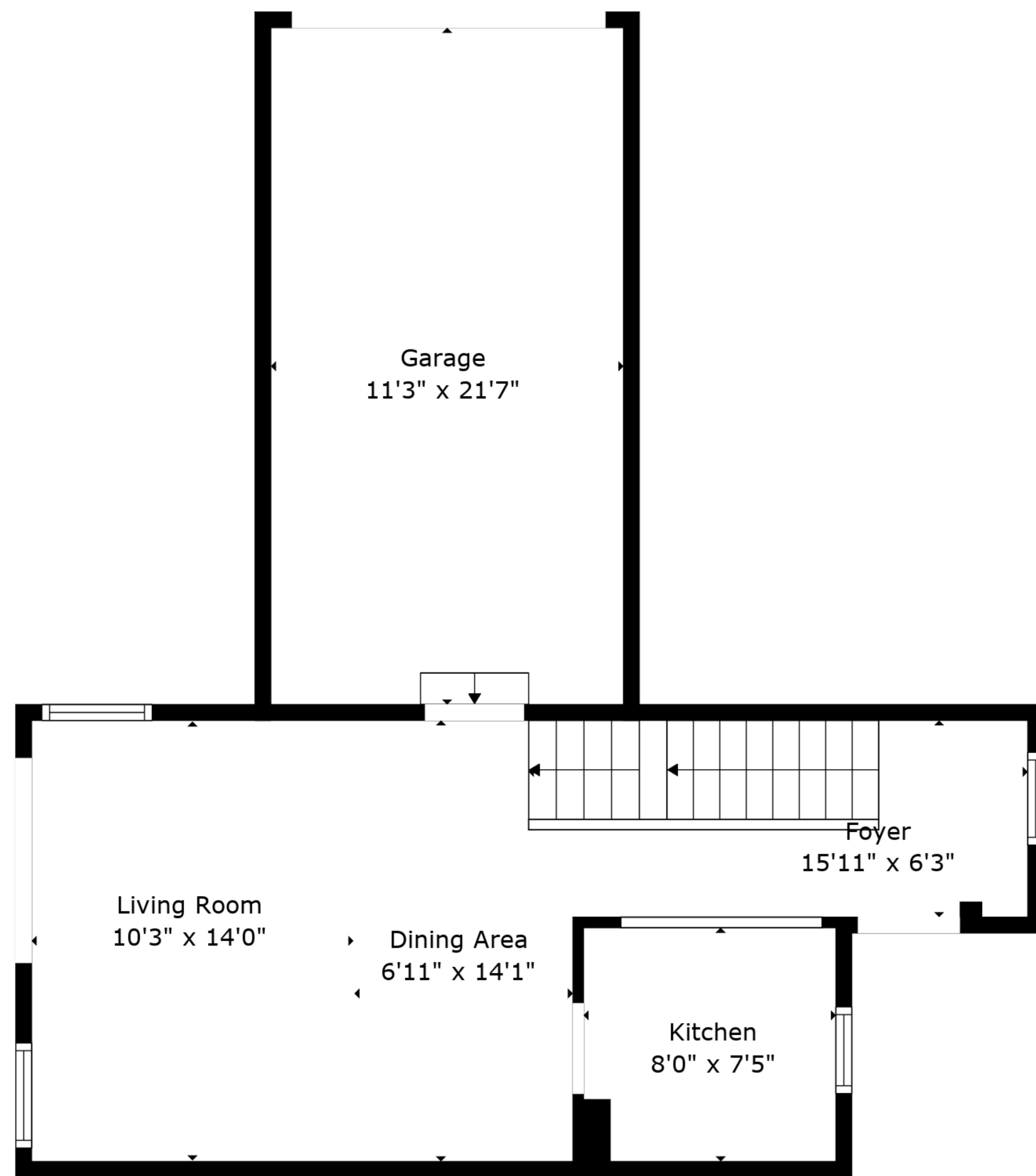
Created By Nordy Photography. Calculations Deemed Highly Reliable But Not Guaranteed.



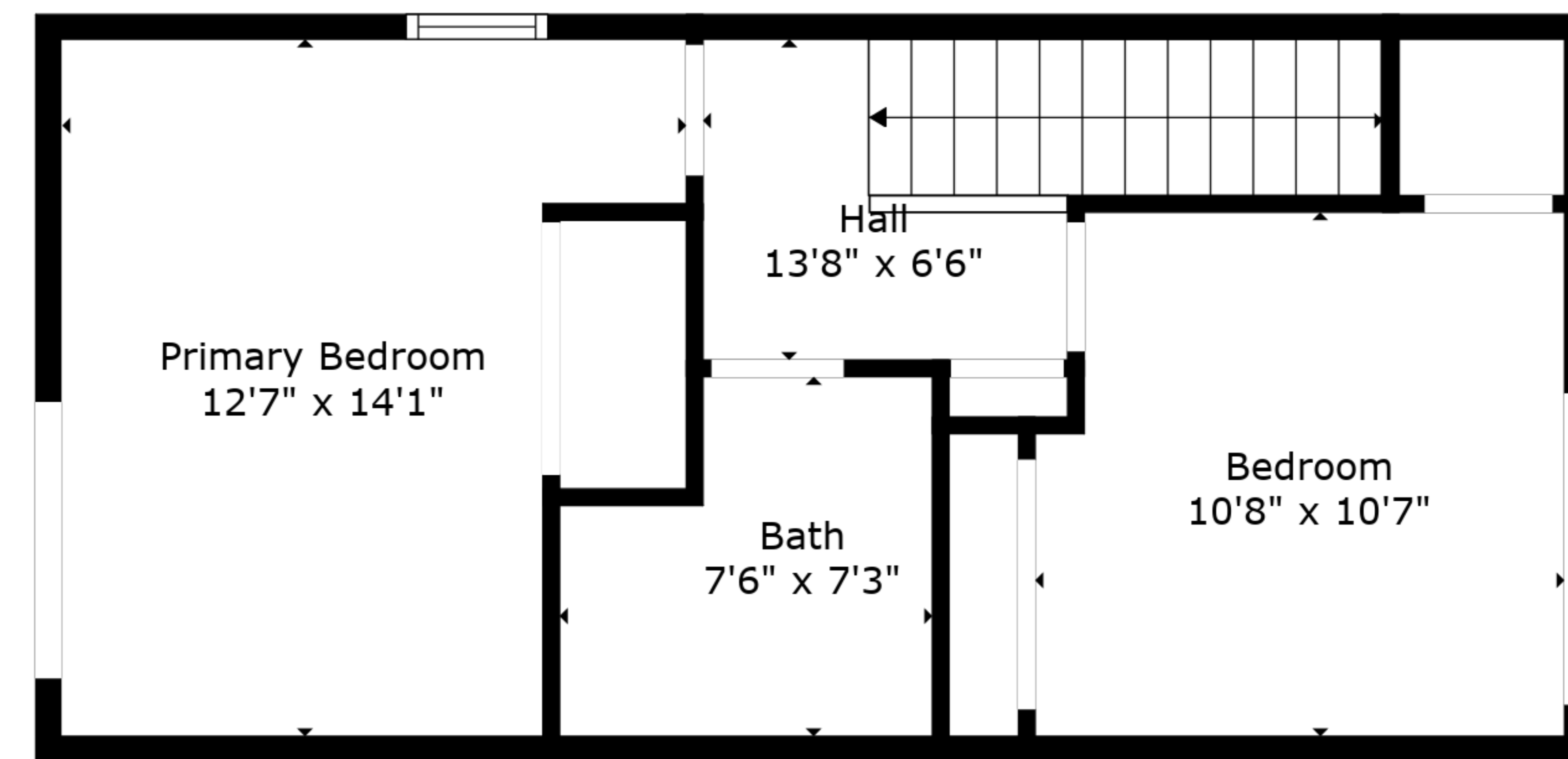
TOTAL: 1123 sq. ft

BELOW GROUND: 299 sq. ft, FLOOR 2: 398 sq. ft, FLOOR 3: 426 sq. ft
EXCLUDED AREAS: GARAGE: 242 sq. ft

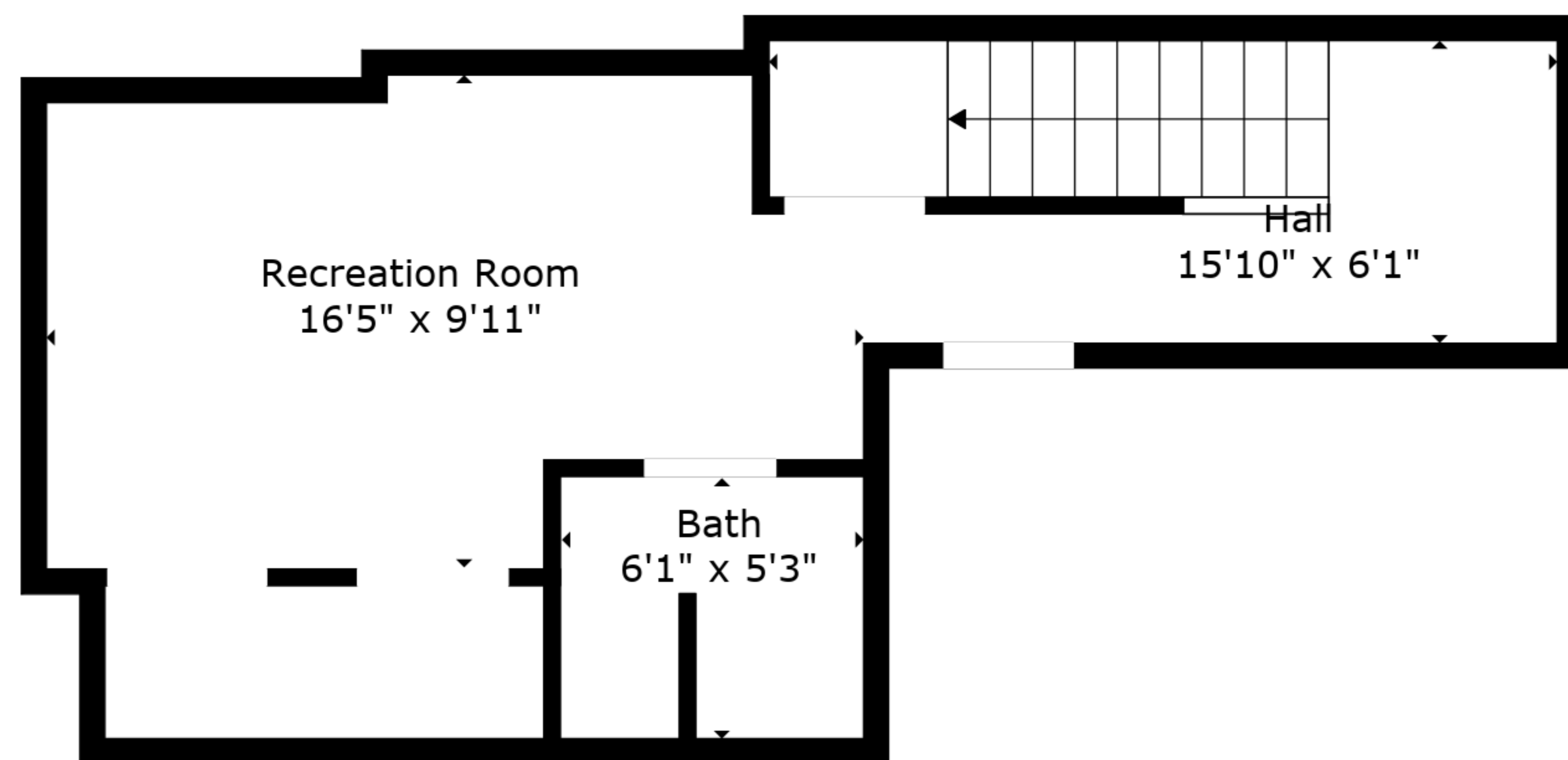
Created By Nordy Photography. Calculations Deemed Highly Reliable But Not Guaranteed.



Floor 2



Floor 3



Floor 1

TOTAL: 1123 sq. ft
 BELOW GROUND: 299 sq. ft, FLOOR 2: 398 sq. ft, FLOOR 3: 426 sq. ft
 EXCLUDED AREAS: GARAGE: 242 sq. ft