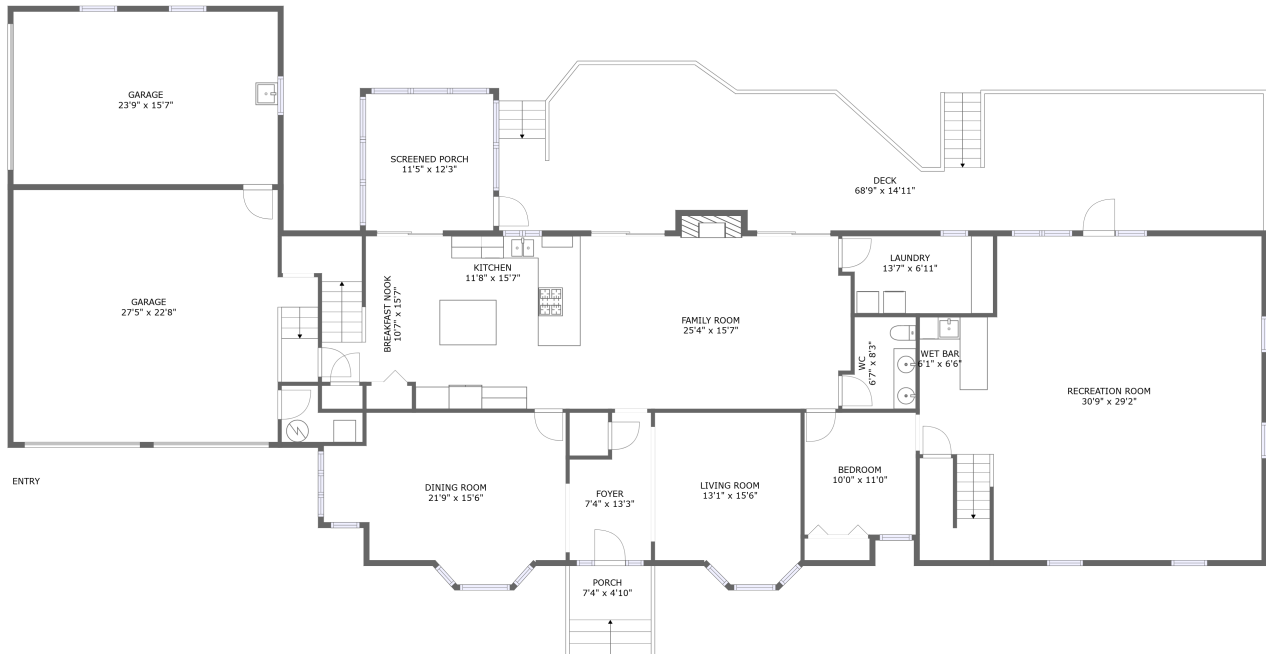
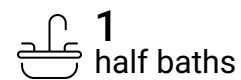


5573 Valley Drive, Cave Spring, Roanoke, Roanoke County, Virginia, United States, 24018



Property Summary



5573 Valley Drive, Cave Spring, Roanoke, Roanoke County, Virginia, United States, 24018



Room Dimensions

Floor 1

Total sqft: 4684

Living area: 2589

#	Room name	Dimensions	Area (sqft)	Counted as Living Area
1	Kitchen	11'8" x 15'7"	181 sq. ft	Yes
2	Foyer	7'4" x 13'3"	82 sq. ft	Yes
3	Dining Room	21'9" x 15'6"	279 sq. ft	Yes
4	Garage	27'5" x 22'8"	574 sq. ft	No
5	Wc	6'7" x 8'3"	49 sq. ft	Yes
6	Garage	23'9" x 15'7"	370 sq. ft	No
7	Porch	7'4" x 4'10"	59 sq. ft	No
8	Family Room	25'4" x 15'7"	396 sq. ft	Yes
9	Recreation Room	30'9" x 29'2"	802 sq. ft	Yes
10	Breakfast Nook	10'7" x 15'7"	155 sq. ft	Yes
11	Screened Porch	11'5" x 12'3"	141 sq. ft	No

Scan captured on Thu, 20 Jun 2024 16:49:32 GMT

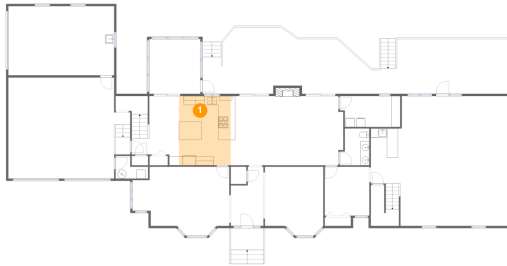
Information is calculated by CubiCasa technology; deemed highly reliable but not guaranteed.

**5573 Valley Drive, Cave Spring, Roanoke,
Roanoke County, Virginia, United States, 24018**

#	Room name	Dimensions	Area (sqft)	Counted as Living Area
12	Wet Bar	6'1" x 6'6"	40 sq. ft	Yes
13	Deck	68'9" x 14'11"	821 sq. ft	No
14	Bedroom	10'0" x 11'0"	110 sq. ft	Yes
15	Living Room	13'1" x 15'6"	188 sq. ft	Yes
16	Laundry	13'7" x 6'11"	90 sq. ft	Yes

**5573 Valley Drive, Cave Spring, Roanoke,
Roanoke County, Virginia, United States, 24018**

1 Floor 1 - Kitchen



Dimensions: 11'8" x 15'7"
Area: 181 sq. ft
Counted as Living Area:
Yes

Heated: Yes
Finished: Yes
Enclosed: Yes
Contiguous:
Yes
Permitted: Yes
Wet Space: No
Addition: No
Conversion: No

2 Floor 1 - Foyer



Dimensions: 7'4" x 13'3"
Area: 82 sq. ft
Counted as Living Area:
Yes

Heated: Yes
Finished: Yes
Enclosed: Yes
Contiguous:
Yes
Permitted: Yes
Wet Space: No
Addition: No
Conversion: No

5573 Valley Drive, Cave Spring, Roanoke, Roanoke County, Virginia, United States, 24018

3 Floor 1 - Dining Room



Dimensions: 21'9" x 15'6"
Area: 279 sq. ft
Counted as Living Area:
Yes

Heated: Yes
Finished: Yes
Enclosed: Yes
Contiguous:
Yes
Permitted: Yes
Wet Space: No
Addition: No
Conversion: No

4 Floor 1 - Garage



Dimensions: 27'5" x 22'8"
Area: 574 sq. ft
Counted as Living Area: No

Heated: No
Finished: No
Enclosed: Yes
Contiguous: Yes
Permitted: Yes
Wet Space: No
Addition: No
Conversion: No

5 Floor 1 - Wc



Dimensions: 6'7" x 8'3"
Area: 49 sq. ft
Counted as Living Area:
Yes

Heated: Yes
Finished: Yes
Enclosed: Yes
Contiguous:
Yes
Permitted: Yes
Wet Space: Yes
Addition: No
Conversion: No

5573 Valley Drive, Cave Spring, Roanoke, Roanoke County, Virginia, United States, 24018

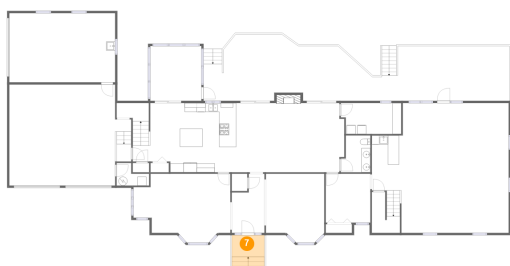
6 Floor 1 - Garage



Dimensions: 23'9" x 15'7"
Area: 370 sq. ft
Counted as Living Area: No

Heated: No
Finished: No
Enclosed: Yes
Contiguous: Yes
Permitted: Yes
Wet Space: No
Addition: No
Conversion: No

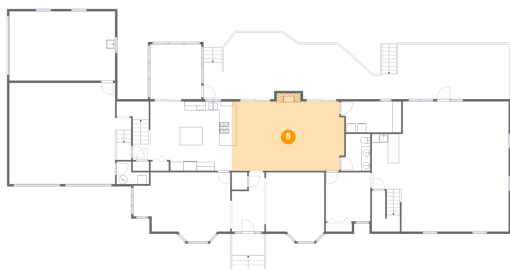
7 Floor 1 - Porch



Dimensions: 7'4" x 4'10"
Area: 59 sq. ft
Counted as Living Area: No

Heated: No
Finished: Yes
Enclosed: No
Contiguous: Yes
Permitted: Yes
Wet Space: No
Addition: No
Conversion: No

8 Floor 1 - Family Room



Dimensions: 25'4" x 15'7"
Area: 396 sq. ft
Counted as Living Area: Yes

Heated: Yes
Finished: Yes
Enclosed: Yes
Contiguous: Yes
Permitted: Yes
Wet Space: No
Addition: No
Conversion: No

5573 Valley Drive, Cave Spring, Roanoke, Roanoke County, Virginia, United States, 24018

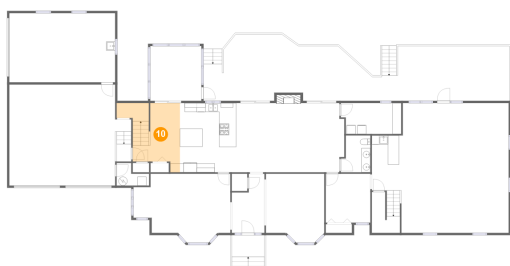
9 Floor 1 - Recreation Room



Dimensions: 30'9" x 29'2"
Area: 802 sq. ft
Counted as Living Area:
Yes

Heated: Yes
Finished: Yes
Enclosed: Yes
Contiguous:
Yes
Permitted: Yes
Wet Space: No
Addition: No
Conversion: No

10 Floor 1 - Breakfast Nook



Dimensions: 10'7" x 15'7"
Area: 155 sq. ft
Counted as Living Area:
Yes

Heated: Yes
Finished: Yes
Enclosed: Yes
Contiguous:
Yes
Permitted: Yes
Wet Space: No
Addition: No
Conversion: No

11 Floor 1 - Screened Porch



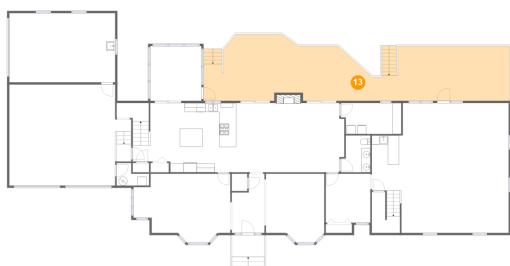
Dimensions: 11'5" x 12'3"
Area: 141 sq. ft
Counted as Living Area: No

Heated: No
Finished: Yes
Enclosed: No
Contiguous: Yes
Permitted: Yes
Wet Space: No
Addition: No
Conversion: No

**5573 Valley Drive, Cave Spring, Roanoke,
Roanoke County, Virginia, United States, 24018****12 Floor 1 - Wet Bar**

Dimensions: 6'1" x 6'6"
Area: 40 sq. ft
Counted as Living Area:
Yes

Heated: Yes
Finished: Yes
Enclosed: Yes
Contiguous:
Yes
Permitted: Yes
Wet Space: No
Addition: No
Conversion: No

13 Floor 1 - Deck

Dimensions: 68'9" x 14'11"
Area: 821 sq. ft
Counted as Living Area: No

Heated: No
Finished: Yes
Enclosed: No
Contiguous: Yes
Permitted: Yes
Wet Space: No
Addition: No
Conversion: No

14 Floor 1 - Bedroom

Dimensions: 10'0" x 11'0"
Area: 110 sq. ft
Counted as Living Area:
Yes

Heated: Yes
Finished: Yes
Enclosed: Yes
Contiguous:
Yes
Permitted: Yes
Wet Space: No
Addition: No
Conversion: No

**5573 Valley Drive, Cave Spring, Roanoke,
Roanoke County, Virginia, United States, 24018**

15 Floor 1 - Living Room



Dimensions: 13'1" x 15'6"
Area: 188 sq. ft
Counted as Living Area:
Yes

Heated: Yes
Finished: Yes
Enclosed: Yes
Contiguous:
Yes
Permitted: Yes
Wet Space: No
Addition: No
Conversion: No

16 Floor 1 - Laundry



Dimensions: 13'7" x 6'11"
Area: 90 sq. ft
Counted as Living Area:
Yes

Heated: Yes
Finished: Yes
Enclosed: Yes
Contiguous:
Yes
Permitted: Yes
Wet Space: No
Addition: No
Conversion: No