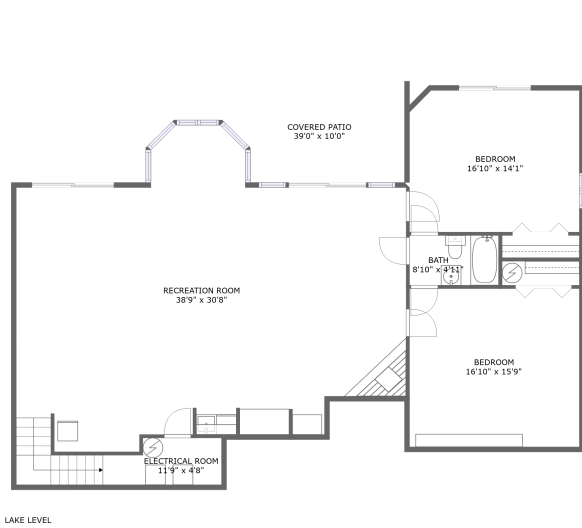


596 Park Way Avenue, North Shore, Moneta, Franklin County, Virginia, United States, 24121



Property summary


 **1** Garages

 **6** Bedrooms

 **3** Bathrooms

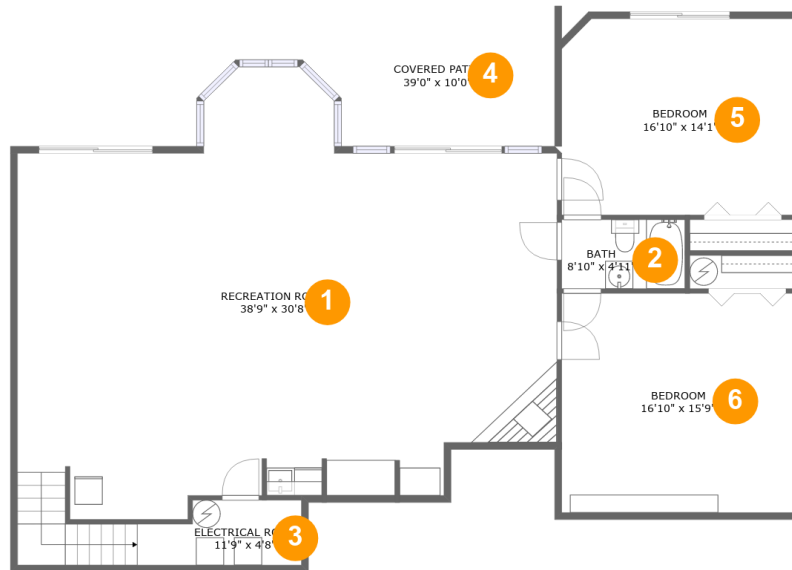
 **0** Half baths

 **2** Floors

 **3,518**
Gross living area sqft

 **5,091**
Total sqft

596 Park Way Avenue, North Shore, Moneta, Franklin County, Virginia, United States, 24121



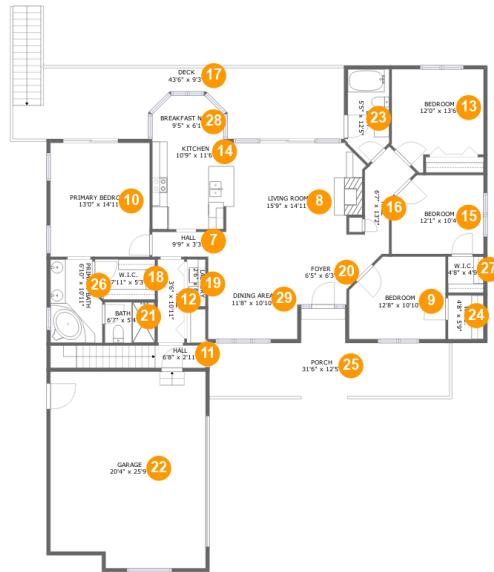
Room dimensions

Floor 1

Total sqft: 2116 Living area: 1678

#		Dimensions	sqft	Counted as living area
1	Recreation Room	38'9" x 30'8"	976 sq. ft	Yes
2	Bath	8'10" x 4'11"	44 sq. ft	Yes
3	Electrical Room	11'9" x 4'8"	86 sq. ft	No
4	Covered Patio	39'0" x 10'0"	336 sq. ft	No
5	Bedroom	16'10" x 14'1"	235 sq. ft	Yes
6	Bedroom	16'10" x 15'9"	265 sq. ft	Yes

596 Park Way Avenue, North Shore, Moneta, Franklin County, Virginia, United States, 24121



Room dimensions

Floor 2

Total sqft: 2975 Living area: 1840

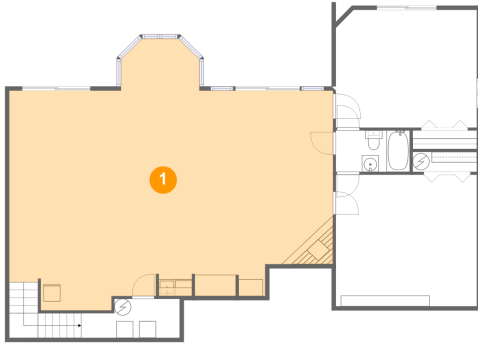
#		Dimensions	sqft	Counted as living area
7	Hall	9'9" x 3'3"	32 sq. ft	Yes
8	Living Room	15'9" x 14'11"	245 sq. ft	Yes
9	Bedroom	12'8" x 10'10"	127 sq. ft	Yes
10	Primary Bedroom	13'0" x 14'11"	195 sq. ft	Yes
11	Hall	6'8" x 2'11"	60 sq. ft	Yes
12	Hall	3'6" x 10'11"	38 sq. ft	Yes
13	Bedroom	12'0" x 13'6"	138 sq. ft	Yes
14	Kitchen	10'9" x 11'6"	119 sq. ft	Yes
15	Bedroom	12'1" x 10'4"	119 sq. ft	Yes
16	Hall	6'7" x 13'2"	69 sq. ft	Yes
17	Deck	43'6" x 9'3"	328 sq. ft	No

**596 Park Way Avenue, North Shore, Moneta, Franklin
County, Virginia, United States, 24121**

#		Dimensions	sqft	Counted as living area
18	W.I.C.	7'11" x 5'3"	41 sq. ft	Yes
19	Laundry	2'6" x 6'2"	15 sq. ft	Yes
20	Foyer	6'5" x 6'3"	40 sq. ft	Yes
21	Bath	6'7" x 5'4"	35 sq. ft	Yes
22	Garage	20'4" x 25'9"	509 sq. ft	No
23	Bath	5'5" x 12'5"	60 sq. ft	Yes
24	W.I.C.	4'8" x 5'9"	27 sq. ft	Yes
25	Porch	31'6" x 12'5"	261 sq. ft	No
26	Primary Bath	6'10" x 10'11"	68 sq. ft	Yes
27	W.I.C.	4'8" x 4'9"	22 sq. ft	Yes
28	Breakfast Nook	9'5" x 6'1"	51 sq. ft	Yes
29	Dining Area	11'8" x 10'10"	126 sq. ft	Yes

596 Park Way Avenue, North Shore, Moneta, Franklin County, Virginia, United States, 24121

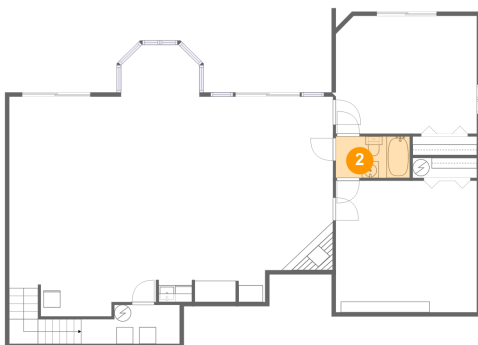
1 Floor 1 - Recreation Room



Dimensions: 38'9" x 30'8"
Area: 976 sq. ft
Counted as living area: Yes

Heated: Yes
Finished: Yes
Enclosed: Yes
Contiguous: Yes
Permitted: Yes
Wet space: No
Addition: No
Conversion: No

2 Floor 1 - Bath

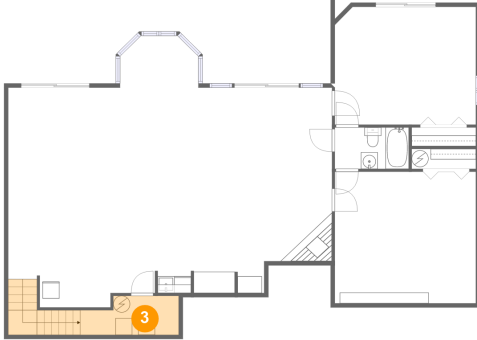


Dimensions: 8'10" x 4'11"
Area: 44 sq. ft
Counted as living area: Yes

Heated: Yes
Finished: Yes
Enclosed: Yes
Contiguous: Yes
Permitted: Yes
Wet space: Yes
Addition: No
Conversion: No

596 Park Way Avenue, North Shore, Moneta, Franklin County, Virginia, United States, 24121

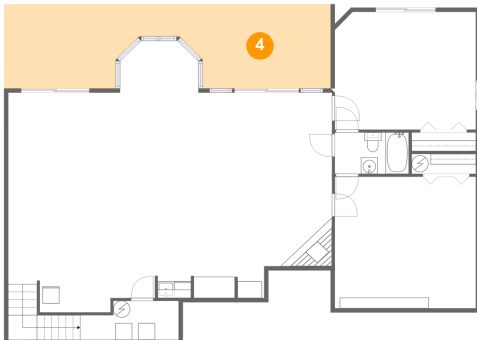
3 Floor 1 - Electrical Room



Dimensions: 11'9" x 4'8"
Area: 86 sq. ft
Counted as living area: No

Heated: No
Finished: No
Enclosed: Yes
Contiguous: Yes
Permitted: Yes
Wet space: No
Addition: No
Conversion: No

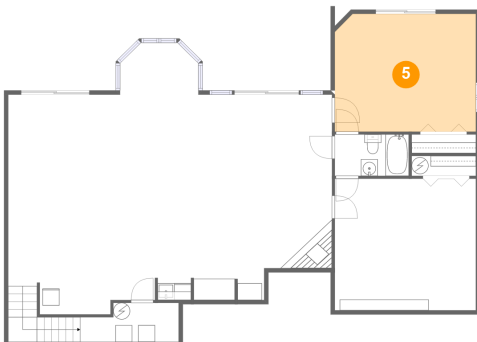
4 Floor 1 - Covered Patio



Dimensions: 39'0" x 10'0"
Area: 336 sq. ft
Counted as living area: No

Heated: No
Finished: Yes
Enclosed: No
Contiguous: Yes
Permitted: Yes
Wet space: No
Addition: No
Conversion: No

5 Floor 1 - Bedroom

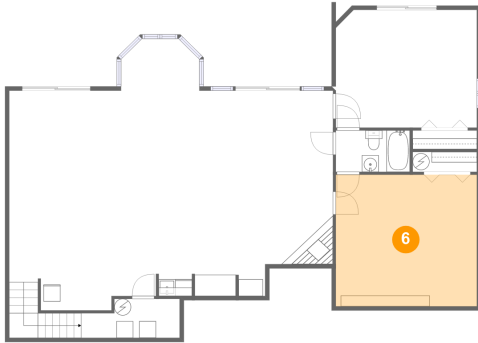


Dimensions: 16'10" x 14'1"
Area: 235 sq. ft
Counted as living area: Yes

Heated: Yes
Finished: Yes
Enclosed: Yes
Contiguous: Yes
Permitted: Yes
Wet space: No
Addition: No
Conversion: No

596 Park Way Avenue, North Shore, Moneta, Franklin County, Virginia, United States, 24121

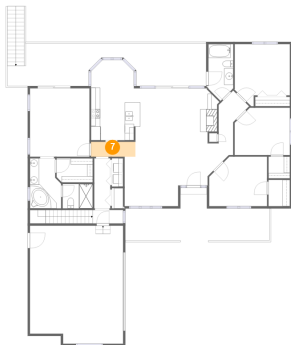
6 Floor 1 - Bedroom



Dimensions: 16'10" x 15'9"
Area: 265 sq. ft
Counted as living area: Yes

Heated: Yes
Finished: Yes
Enclosed: Yes
Contiguous: Yes
Permitted: Yes
Wet space: No
Addition: No
Conversion: No

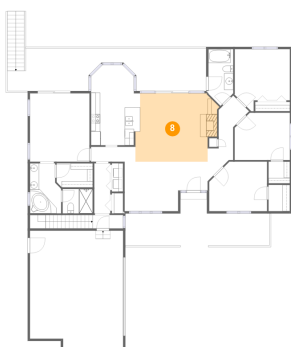
7 Floor 2 - Hall



Dimensions: 9'9" x 3'3"
Area: 32 sq. ft
Counted as living area: Yes

Heated: Yes
Finished: Yes
Enclosed: Yes
Contiguous: Yes
Permitted: Yes
Wet space: No
Addition: No
Conversion: No

8 Floor 2 - Living Room

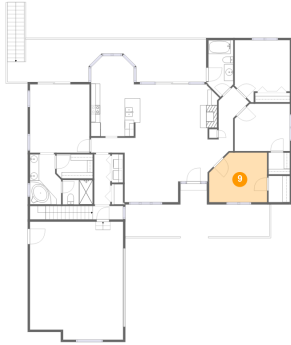


Dimensions: 15'9" x 14'11"
Area: 245 sq. ft
Counted as living area: Yes

Heated: Yes
Finished: Yes
Enclosed: Yes
Contiguous: Yes
Permitted: Yes
Wet space: No
Addition: No
Conversion: No

**596 Park Way Avenue, North Shore, Moneta, Franklin
County, Virginia, United States, 24121**

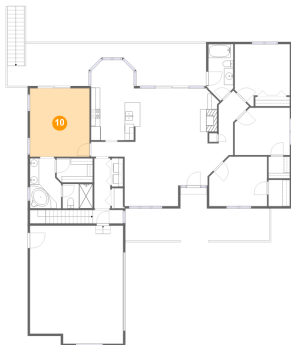
9 Floor 2 - Bedroom



Dimensions: 12'8" x 10'10"
Area: 127 sq. ft
Counted as living area: Yes

Heated: Yes
Finished: Yes
Enclosed: Yes
Contiguous: Yes
Permitted: Yes
Wet space: No
Addition: No
Conversion: No

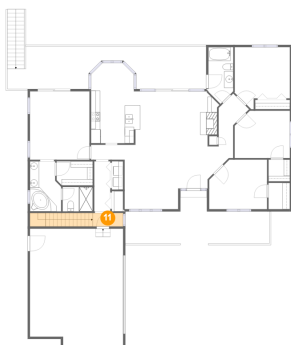
10 Floor 2 - Primary Bedroom



Dimensions: 13'0" x 14'11"
Area: 195 sq. ft
Counted as living area: Yes

Heated: Yes
Finished: Yes
Enclosed: Yes
Contiguous: Yes
Permitted: Yes
Wet space: No
Addition: No
Conversion: No

11 Floor 2 - Hall

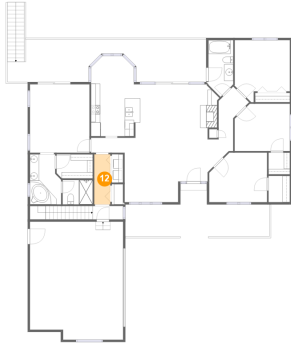


Dimensions: 6'8" x 2'11"
Area: 60 sq. ft
Counted as living area: Yes

Heated: Yes
Finished: Yes
Enclosed: Yes
Contiguous: Yes
Permitted: Yes
Wet space: No
Addition: No
Conversion: No

**596 Park Way Avenue, North Shore, Moneta, Franklin
County, Virginia, United States, 24121**

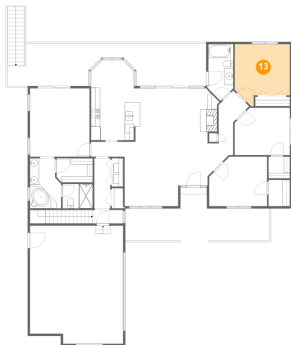
12 Floor 2 - Hall



Dimensions: 3'6" x 10'11"
Area: 38 sq. ft
Counted as living area: Yes

Heated: Yes
Finished: Yes
Enclosed: Yes
Contiguous: Yes
Permitted: Yes
Wet space: No
Addition: No
Conversion: No

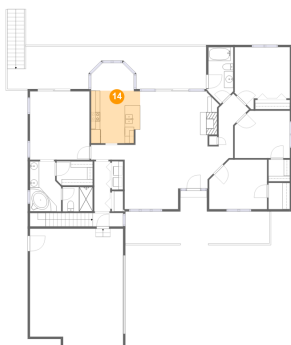
13 Floor 2 - Bedroom



Dimensions: 12'0" x 13'6"
Area: 138 sq. ft
Counted as living area: Yes

Heated: Yes
Finished: Yes
Enclosed: Yes
Contiguous: Yes
Permitted: Yes
Wet space: No
Addition: No
Conversion: No

14 Floor 2 - Kitchen

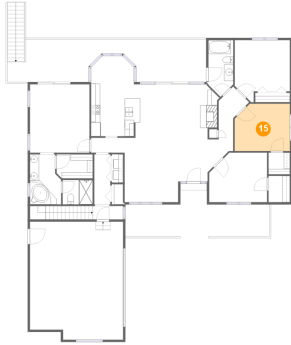


Dimensions: 10'9" x 11'6"
Area: 119 sq. ft
Counted as living area: Yes

Heated: Yes
Finished: Yes
Enclosed: Yes
Contiguous: Yes
Permitted: Yes
Wet space: No
Addition: No
Conversion: No

596 Park Way Avenue, North Shore, Moneta, Franklin County, Virginia, United States, 24121

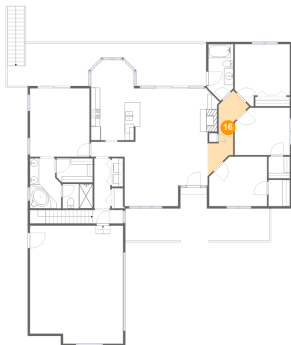
15 Floor 2 - Bedroom



Dimensions: 12'1" x 10'4"
Area: 119 sq. ft
Counted as living area: Yes

Heated: Yes
Finished: Yes
Enclosed: Yes
Contiguous: Yes
Permitted: Yes
Wet space: No
Addition: No
Conversion: No

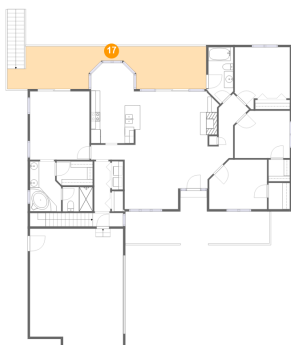
16 Floor 2 - Hall



Dimensions: 6'7" x 13'2"
Area: 69 sq. ft
Counted as living area: Yes

Heated: Yes
Finished: Yes
Enclosed: Yes
Contiguous: Yes
Permitted: Yes
Wet space: No
Addition: No
Conversion: No

17 Floor 2 - Deck



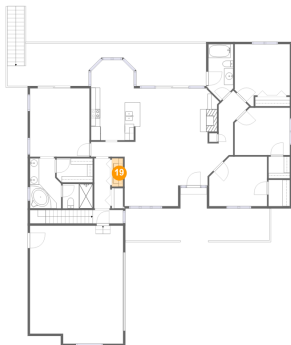
Dimensions: 43'6" x 9'3"
Area: 328 sq. ft
Counted as living area: No

Heated: No
Finished: Yes
Enclosed: No
Contiguous: Yes
Permitted: Yes
Wet space: No
Addition: No
Conversion: No

**596 Park Way Avenue, North Shore, Moneta, Franklin
County, Virginia, United States, 24121****18 Floor 2 - W.I.C.**

Dimensions: 7'11" x 5'3"
Area: 41 sq. ft
Counted as living area: Yes

Heated: Yes
Finished: Yes
Enclosed: Yes
Contiguous: Yes
Permitted: Yes
Wet space: No
Addition: No
Conversion: No

19 Floor 2 - Laundry

Dimensions: 2'6" x 6'2"
Area: 15 sq. ft
Counted as living area: Yes

Heated: Yes
Finished: Yes
Enclosed: Yes
Contiguous: Yes
Permitted: Yes
Wet space: No
Addition: No
Conversion: No

20 Floor 2 - Foyer

Dimensions: 6'5" x 6'3"
Area: 40 sq. ft
Counted as living area: Yes

Heated: Yes
Finished: Yes
Enclosed: Yes
Contiguous: Yes
Permitted: Yes
Wet space: No
Addition: No
Conversion: No

596 Park Way Avenue, North Shore, Moneta, Franklin County, Virginia, United States, 24121

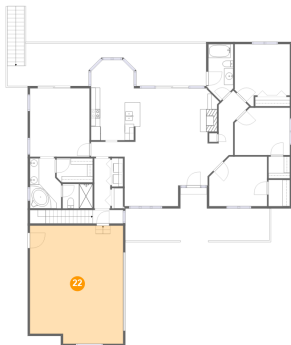
21 Floor 2 - Bath



Dimensions: 6'7" x 5'4"
Area: 35 sq. ft
Counted as living area: Yes

Heated: Yes
Finished: Yes
Enclosed: Yes
Contiguous: Yes
Permitted: Yes
Wet space: Yes
Addition: No
Conversion: No

22 Floor 2 - Garage



Dimensions: 20'4" x 25'9"
Area: 509 sq. ft
Counted as living area: No

Heated: No
Finished: No
Enclosed: Yes
Contiguous: Yes
Permitted: Yes
Wet space: No
Addition: No
Conversion: No

23 Floor 2 - Bath

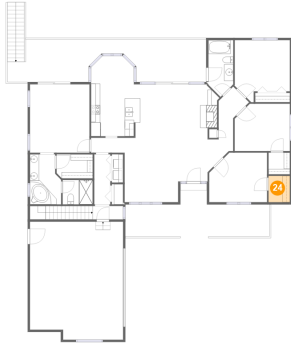


Dimensions: 5'5" x 12'5"
Area: 60 sq. ft
Counted as living area: Yes

Heated: Yes
Finished: Yes
Enclosed: Yes
Contiguous: Yes
Permitted: Yes
Wet space: Yes
Addition: No
Conversion: No

596 Park Way Avenue, North Shore, Moneta, Franklin County, Virginia, United States, 24121

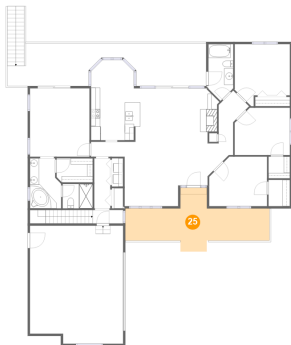
24 Floor 2 - W.I.C.



Dimensions: 4'8" x 5'9"
Area: 27 sq. ft
Counted as living area: Yes

Heated: Yes
Finished: Yes
Enclosed: Yes
Contiguous: Yes
Permitted: Yes
Wet space: No
Addition: No
Conversion: No

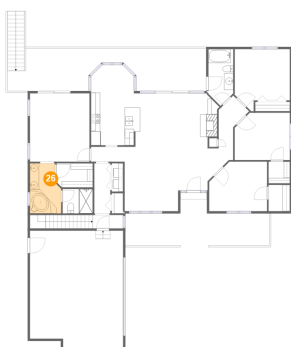
25 Floor 2 - Porch



Dimensions: 31'6" x 12'5"
Area: 261 sq. ft
Counted as living area: No

Heated: No
Finished: Yes
Enclosed: No
Contiguous: Yes
Permitted: Yes
Wet space: No
Addition: No
Conversion: No

26 Floor 2 - Primary Bath

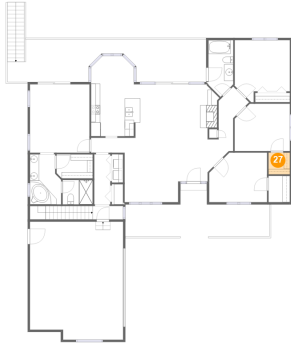


Dimensions: 6'10" x 10'11"
Area: 68 sq. ft
Counted as living area: Yes

Heated: Yes
Finished: Yes
Enclosed: Yes
Contiguous: Yes
Permitted: Yes
Wet space: Yes
Addition: No
Conversion: No

**596 Park Way Avenue, North Shore, Moneta, Franklin
County, Virginia, United States, 24121**

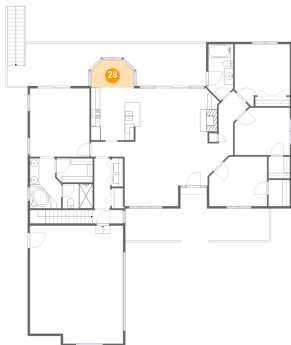
27 Floor 2 - W.I.C.



Dimensions: 4'8" x 4'9"
Area: 22 sq. ft
Counted as living area: Yes

Heated: Yes
Finished: Yes
Enclosed: Yes
Contiguous: Yes
Permitted: Yes
Wet space: No
Addition: No
Conversion: No

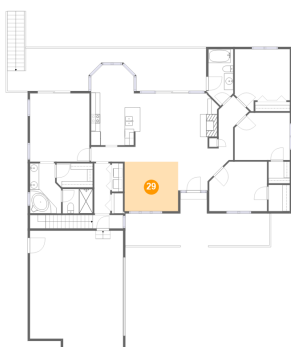
28 Floor 2 - Breakfast Nook



Dimensions: 9'5" x 6'1"
Area: 51 sq. ft
Counted as living area: Yes

Heated: Yes
Finished: Yes
Enclosed: Yes
Contiguous: Yes
Permitted: Yes
Wet space: No
Addition: No
Conversion: No

29 Floor 2 - Dining Area



Dimensions: 11'8" x 10'10"
Area: 126 sq. ft
Counted as living area: Yes

Heated: Yes
Finished: Yes
Enclosed: Yes
Contiguous: Yes
Permitted: Yes
Wet space: No
Addition: No
Conversion: No