

Home report

117 West Commerce Street, Lewisburg, Marshall County,
Tennessee, United States, 37091, 111 west commerce st



Total Area: 7726 sq. ft

Floor 1: 3934 sq. ft, Floor 2: 3792 sq. ft

Excluded: Elevator 52 sq. ft, Utility 307 sq. ft, Storage 959 sq. ft, Undefined 8 sq. ft, Open to below 136 sq. ft, Walls: 330 sq. ft

Property summary



2 Floors



4 Half baths

Home report

117 West Commerce Street, Lewisburg, Marshall County,
Tennessee, United States, 37091, 111 west commerce st



Room dimensions

Floor 1 Total:3934sqft Excluded: 677sqft

#		Max Dimensions	sqft	Included
1	Room	13'10" x 14'0"	194 sq. ft	Yes
2	Bath	8'0" x 7'5"	46 sq. ft	Yes
3	Hall	18'6" x 7'3"	134 sq. ft	Yes
4	Kitchen	14'5" x 14'2"	209 sq. ft	Yes
5	Foyer	25'2" x 12'4"	273 sq. ft	Yes
6	WC	4'0" x 2'8"	11 sq. ft	Yes
7	Room	13'10" x 15'2"	210 sq. ft	Yes
8	Hall	9'3" x 47'4"	231 sq. ft	Yes
9	Office	11'9" x 16'5"	171 sq. ft	Yes
10	Storage	13'7" x 12'11"	183 sq. ft	No
11	Utility	9'9" x 12'2"	118 sq. ft	No

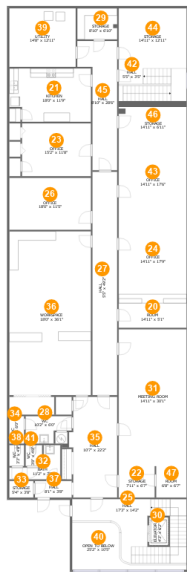
Home report

**117 West Commerce Street, Lewisburg, Marshall County,
Tennessee, United States, 37091, 111 west commerce st**

#		Max Dimensions	sqft	Included
12	WC	2'6" x 4'4"	11 sq. ft	Yes
13	Storage	18'6" x 18'4"	339 sq. ft	No
14	Elevator	4'3" x 6'2"	26 sq. ft	No
15	Office	18'6" x 22'10"	394 sq. ft	Yes
16	Room	39'7" x 55'10"	1638 sq. ft	Yes
17	WC	2'11" x 4'4"	13 sq. ft	Yes
18	Office	9'10" x 12'2"	127 sq. ft	Yes
19	Bath	13'10" x 8'3"	76 sq. ft	Yes

Home report

117 West Commerce Street, Lewisburg, Marshall County, Tennessee, United States, 37091, 111 west commerce st



Room dimensions

Floor 2 Total:3792sqft Excluded: 785sqft

#		Max Dimensions	sqft	Included
20	Room	14'11" x 5'1"	76 sq. ft	Yes
21	Kitchen	18'0" x 11'9"	202 sq. ft	Yes
22	Storage	7'11" x 6'7"	52 sq. ft	No
23	Office	15'2" x 11'8"	177 sq. ft	Yes
24	Office	14'11" x 17'9"	265 sq. ft	Yes
25	Hall	17'3" x 14'2"	256 sq. ft	Yes
26	Office	18'0" x 11'5"	206 sq. ft	Yes
27	Hall	5'5" x 49'2"	268 sq. ft	Yes
28	WC	10'2" x 6'0"	50 sq. ft	Yes
29	Storage	8'10" x 6'10"	60 sq. ft	No
30	Elevator	4'3" x 6'2"	26 sq. ft	No

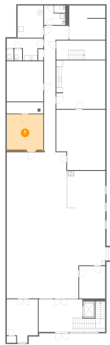
Home report

**117 West Commerce Street, Lewisburg, Marshall County,
Tennessee, United States, 37091, 111 west commerce st**

#		Max Dimensions	sqft	Included
31	Meeting Room	14'11" x 30'1"	450 sq. ft	Yes
32	Bath	11'2" x 7'7"	47 sq. ft	Yes
33	Storage	5'4" x 3'8"	19 sq. ft	No
34	WC	3'3" x 6'0"	20 sq. ft	Yes
35	Hall	10'7" x 22'2"	218 sq. ft	Yes
36	Workspace	18'0" x 36'1"	649 sq. ft	Yes
37	Hall	8'1" x 3'8"	30 sq. ft	Yes
38	WC	3'3" x 4'8"	15 sq. ft	Yes
39	Utility	14'8" x 12'11"	189 sq. ft	No
40	Open To Below	25'2" x 10'5"	136 sq. ft	No
41	WC	3'8" x 4'8"	17 sq. ft	Yes
42	Hall	5'5" x 3'5"	127 sq. ft	Yes
43	Office	14'11" x 17'6"	261 sq. ft	Yes
44	Storage	14'11" x 12'11"	193 sq. ft	No
45	Hall	8'10" x 28'6"	174 sq. ft	Yes
46	Storage	14'11" x 6'11"	104 sq. ft	No
47	Room	6'8" x 6'7"	44 sq. ft	Yes

117 West Commerce Street, Lewisburg, Marshall County,
Tennessee, United States, 37091, 111 west commerce st

1 Floor 1 - Room



Max Dimensions: 13'10" x 14'0"
Calculated Area: 194 sq. ft
Included: Yes

Heated: Yes
Finished: Yes
Enclosed: Yes
Contiguous: Yes
Permitted: Yes
Wet space: No
Addition: No
Conversion: No

2 Floor 1 - Bath



Max Dimensions: 8'0" x 7'5"
Calculated Area: 46 sq. ft
Included: Yes

Heated: Yes
Finished: Yes
Enclosed: Yes
Contiguous: Yes
Permitted: Yes
Wet space: Yes
Addition: No
Conversion: No

117 West Commerce Street, Lewisburg, Marshall County,
Tennessee, United States, 37091, 111 west commerce st

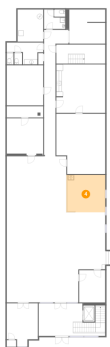
3 Floor 1 - Hall



Max Dimensions: 18'6" x 7'3"
Calculated Area: 134 sq. ft
Included: Yes

Heated: Yes
Finished: Yes
Enclosed: Yes
Contiguous: Yes
Permitted: Yes
Wet space: No
Addition: No
Conversion: No

4 Floor 1 - Kitchen



Max Dimensions: 14'5" x 14'2"
Calculated Area: 209 sq. ft
Included: Yes

Heated: Yes
Finished: Yes
Enclosed: Yes
Contiguous: Yes
Permitted: Yes
Wet space: No
Addition: No
Conversion: No

5 Floor 1 - Foyer



Max Dimensions: 25'2" x 12'4"
Calculated Area: 273 sq. ft
Included: Yes

Heated: Yes
Finished: Yes
Enclosed: Yes
Contiguous: Yes
Permitted: Yes
Wet space: No
Addition: No
Conversion: No

117 West Commerce Street, Lewisburg, Marshall County,
Tennessee, United States, 37091, 111 west commerce st

6 Floor 1 - WC



Max Dimensions: 4'0" x 2'8"
Calculated Area: 11 sq. ft
Included: Yes

Heated: Yes
Finished: Yes
Enclosed: Yes
Contiguous: Yes
Permitted: Yes
Wet space: No
Addition: No
Conversion: No

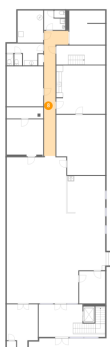
7 Floor 1 - Room



Max Dimensions: 13'10" x 15'2"
Calculated Area: 210 sq. ft
Included: Yes

Heated: Yes
Finished: Yes
Enclosed: Yes
Contiguous: Yes
Permitted: Yes
Wet space: No
Addition: No
Conversion: No

8 Floor 1 - Hall



Max Dimensions: 9'3" x 47'4"
Calculated Area: 231 sq. ft
Included: Yes

Heated: Yes
Finished: Yes
Enclosed: Yes
Contiguous: Yes
Permitted: Yes
Wet space: No
Addition: No
Conversion: No

117 West Commerce Street, Lewisburg, Marshall County,
Tennessee, United States, 37091, 111 west commerce st

9 Floor 1 - Office



Max Dimensions: 11'9" x 16'5"
Calculated Area: 171 sq. ft
Included: Yes

Heated: Yes
Finished: Yes
Enclosed: Yes
Contiguous: Yes
Permitted: Yes
Wet space: No
Addition: No
Conversion: No

10 Floor 1 - Storage



Max Dimensions: 13'7" x 12'11"
Calculated Area: 183 sq. ft
Included: No

Heated: No
Finished: No
Enclosed: No
Contiguous: Yes
Permitted: Yes
Wet space: No
Addition: No
Conversion: No

11 Floor 1 - Utility



Max Dimensions: 9'9" x 12'2"
Calculated Area: 118 sq. ft
Included: No

Heated: Yes
Finished: No
Enclosed: Yes
Contiguous: Yes
Permitted: Yes
Wet space: No
Addition: No
Conversion: No

12 Floor 1 - WC



Max Dimensions: 2'6" x 4'4"
Calculated Area: 11 sq. ft
Included: Yes

Heated: Yes
Finished: Yes
Enclosed: Yes
Contiguous: Yes
Permitted: Yes
Wet space: No
Addition: No
Conversion: No

13 Floor 1 - Storage



Max Dimensions: 18'6" x 18'4"
Calculated Area: 339 sq. ft
Included: No

Heated: No
Finished: No
Enclosed: No
Contiguous: Yes
Permitted: Yes
Wet space: No
Addition: No
Conversion: No

14 Floor 1 - Elevator



Max Dimensions: 4'3" x 6'2"
Calculated Area: 26 sq. ft
Included: No

Heated: No
Finished: No
Enclosed: Yes
Contiguous: Yes
Permitted: Yes
Wet space: No
Addition: No
Conversion: No

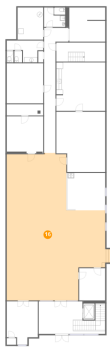
15 Floor 1 - Office



Max Dimensions: 18'6" x 22'10"
Calculated Area: 394 sq. ft
Included: Yes

Heated: Yes
Finished: Yes
Enclosed: Yes
Contiguous: Yes
Permitted: Yes
Wet space: No
Addition: No
Conversion: No

16 Floor 1 - Room



Max Dimensions: 39'7" x 55'10"
Calculated Area: 1638 sq. ft
Included: Yes

Heated: Yes
Finished: Yes
Enclosed: Yes
Contiguous: Yes
Permitted: Yes
Wet space: No
Addition: No
Conversion: No

17 Floor 1 - WC



Max Dimensions: 2'11" x 4'4"
Calculated Area: 13 sq. ft
Included: Yes

Heated: Yes
Finished: Yes
Enclosed: Yes
Contiguous: Yes
Permitted: Yes
Wet space: No
Addition: No
Conversion: No

117 West Commerce Street, Lewisburg, Marshall County,
Tennessee, United States, 37091, 111 west commerce st

18 Floor 1 - Office



Max Dimensions: 9'10" x 12'2"
Calculated Area: 127 sq. ft
Included: Yes

Heated: Yes
Finished: Yes
Enclosed: Yes
Contiguous: Yes
Permitted: Yes
Wet space: No
Addition: No
Conversion: No

19 Floor 1 - Bath



Max Dimensions: 13'10" x 8'3"
Calculated Area: 76 sq. ft
Included: Yes

Heated: Yes
Finished: Yes
Enclosed: Yes
Contiguous: Yes
Permitted: Yes
Wet space: Yes
Addition: No
Conversion: No

20 Floor 2 - Room

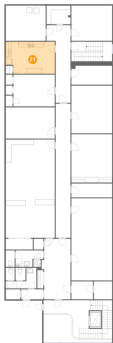


Max Dimensions: 14'11" x 5'1"
Calculated Area: 76 sq. ft
Included: Yes

Heated: Yes
Finished: Yes
Enclosed: Yes
Contiguous: Yes
Permitted: Yes
Wet space: No
Addition: No
Conversion: No

117 West Commerce Street, Lewisburg, Marshall County,
Tennessee, United States, 37091, 111 west commerce st

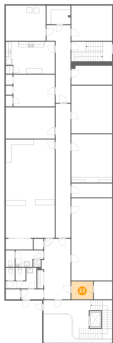
21 Floor 2 - Kitchen



Max Dimensions: 18'0" x 11'9"
Calculated Area: 202 sq. ft
Included: Yes

Heated: Yes
Finished: Yes
Enclosed: Yes
Contiguous: Yes
Permitted: Yes
Wet space: No
Addition: No
Conversion: No

22 Floor 2 - Storage



Max Dimensions: 7'11" x 6'7"
Calculated Area: 52 sq. ft
Included: No

Heated: No
Finished: No
Enclosed: No
Contiguous: Yes
Permitted: Yes
Wet space: No
Addition: No
Conversion: No

23 Floor 2 - Office



Max Dimensions: 15'2" x 11'8"
Calculated Area: 177 sq. ft
Included: Yes

Heated: Yes
Finished: Yes
Enclosed: Yes
Contiguous: Yes
Permitted: Yes
Wet space: No
Addition: No
Conversion: No

117 West Commerce Street, Lewisburg, Marshall County,
Tennessee, United States, 37091, 111 west commerce st

24 Floor 2 - Office



Max Dimensions: 14'11" x 17'9"
Calculated Area: 265 sq. ft
Included: Yes

Heated: Yes
Finished: Yes
Enclosed: Yes
Contiguous: Yes
Permitted: Yes
Wet space: No
Addition: No
Conversion: No

25 Floor 2 - Hall



Max Dimensions: 17'3" x 14'2"
Calculated Area: 256 sq. ft
Included: Yes

Heated: Yes
Finished: Yes
Enclosed: Yes
Contiguous: Yes
Permitted: Yes
Wet space: No
Addition: No
Conversion: No

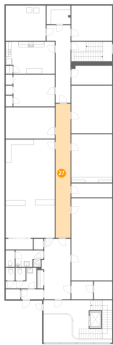
26 Floor 2 - Office



Max Dimensions: 18'0" x 11'5"
Calculated Area: 206 sq. ft
Included: Yes

Heated: Yes
Finished: Yes
Enclosed: Yes
Contiguous: Yes
Permitted: Yes
Wet space: No
Addition: No
Conversion: No

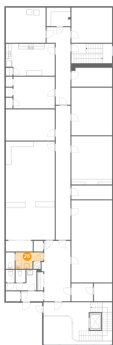
27 Floor 2 - Hall



Max Dimensions: 5'5" x 49'2"
Calculated Area: 268 sq. ft
Included: Yes

Heated: Yes
Finished: Yes
Enclosed: Yes
Contiguous: Yes
Permitted: Yes
Wet space: No
Addition: No
Conversion: No

28 Floor 2 - WC



Max Dimensions: 10'2" x 6'0"
Calculated Area: 50 sq. ft
Included: Yes

Heated: Yes
Finished: Yes
Enclosed: Yes
Contiguous: Yes
Permitted: Yes
Wet space: Yes
Addition: No
Conversion: No

29 Floor 2 - Storage

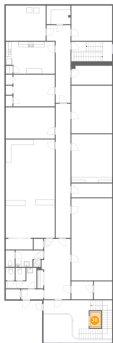


Max Dimensions: 8'10" x 6'10"
Calculated Area: 60 sq. ft
Included: No

Heated: No
Finished: No
Enclosed: No
Contiguous: Yes
Permitted: Yes
Wet space: No
Addition: No
Conversion: No

117 West Commerce Street, Lewisburg, Marshall County,
Tennessee, United States, 37091, 111 west commerce st

30 Floor 2 - Elevator



Max Dimensions: 4'3" x 6'2"
Calculated Area: 26 sq. ft
Included: No

Heated: No
Finished: No
Enclosed: Yes
Contiguous: Yes
Permitted: Yes
Wet space: No
Addition: No
Conversion: No

31 Floor 2 - Meeting Room



Max Dimensions: 14'11" x 30'1"
Calculated Area: 450 sq. ft
Included: Yes

Heated: Yes
Finished: Yes
Enclosed: Yes
Contiguous: Yes
Permitted: Yes
Wet space: No
Addition: No
Conversion: No

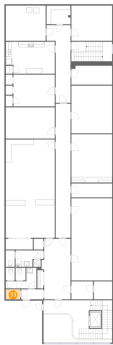
32 Floor 2 - Bath



Max Dimensions: 11'2" x 7'7"
Calculated Area: 47 sq. ft
Included: Yes

Heated: Yes
Finished: Yes
Enclosed: Yes
Contiguous: Yes
Permitted: Yes
Wet space: Yes
Addition: No
Conversion: No

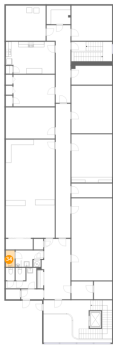
33 Floor 2 - Storage



Max Dimensions: 5'4" x 3'8"
Calculated Area: 19 sq. ft
Included: No

Heated: No
Finished: No
Enclosed: No
Contiguous: Yes
Permitted: Yes
Wet space: No
Addition: No
Conversion: No

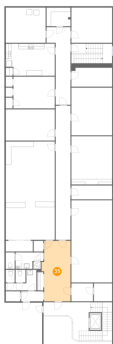
34 Floor 2 - WC



Max Dimensions: 3'3" x 6'0"
Calculated Area: 20 sq. ft
Included: Yes

Heated: Yes
Finished: Yes
Enclosed: Yes
Contiguous: Yes
Permitted: Yes
Wet space: Yes
Addition: No
Conversion: No

35 Floor 2 - Hall



Max Dimensions: 10'7" x 22'2"
Calculated Area: 218 sq. ft
Included: Yes

Heated: Yes
Finished: Yes
Enclosed: Yes
Contiguous: Yes
Permitted: Yes
Wet space: No
Addition: No
Conversion: No

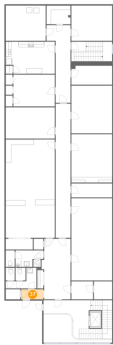
36 Floor 2 - Workspace



Max Dimensions: 18'0" x 36'1"
Calculated Area: 649 sq. ft
Included: Yes

Heated: Yes
Finished: Yes
Enclosed: Yes
Contiguous: Yes
Permitted: Yes
Wet space: No
Addition: No
Conversion: No

37 Floor 2 - Hall



Max Dimensions: 8'1" x 3'8"
Calculated Area: 30 sq. ft
Included: Yes

Heated: Yes
Finished: Yes
Enclosed: Yes
Contiguous: Yes
Permitted: Yes
Wet space: No
Addition: No
Conversion: No

38 Floor 2 - WC

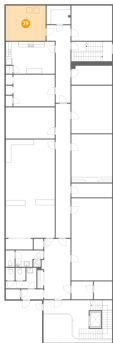


Max Dimensions: 3'3" x 4'8"
Calculated Area: 15 sq. ft
Included: Yes

Heated: Yes
Finished: Yes
Enclosed: Yes
Contiguous: Yes
Permitted: Yes
Wet space: No
Addition: No
Conversion: No

117 West Commerce Street, Lewisburg, Marshall County,
Tennessee, United States, 37091, 111 west commerce st

39 Floor 2 - Utility



Max Dimensions: 14'8" x 12'11"
Calculated Area: 189 sq. ft
Included: No

Heated: Yes
Finished: No
Enclosed: Yes
Contiguous: Yes
Permitted: Yes
Wet space: No
Addition: No
Conversion: No

40 Floor 2 - Open To Below



Max Dimensions: 25'2" x 10'5"
Calculated Area: 136 sq. ft
Included: No

Heated: No
Finished: No
Enclosed: No
Contiguous: Yes
Permitted: No
Wet space: No
Addition: No
Conversion: No

41 Floor 2 - WC

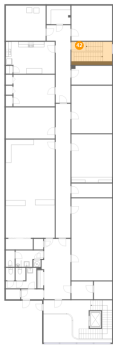


Max Dimensions: 3'8" x 4'8"
Calculated Area: 17 sq. ft
Included: Yes

Heated: Yes
Finished: Yes
Enclosed: Yes
Contiguous: Yes
Permitted: Yes
Wet space: No
Addition: No
Conversion: No

117 West Commerce Street, Lewisburg, Marshall County,
Tennessee, United States, 37091, 111 west commerce st

42 Floor 2 - Hall



Max Dimensions: 5'5" x 3'5"
Calculated Area: 127 sq. ft
Included: Yes

Heated: Yes
Finished: Yes
Enclosed: Yes
Contiguous: Yes
Permitted: Yes
Wet space: No
Addition: No
Conversion: No

43 Floor 2 - Office



Max Dimensions: 14'11" x 17'6"
Calculated Area: 261 sq. ft
Included: Yes

Heated: Yes
Finished: Yes
Enclosed: Yes
Contiguous: Yes
Permitted: Yes
Wet space: No
Addition: No
Conversion: No

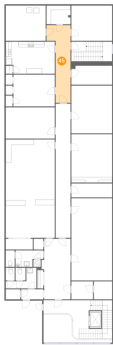
44 Floor 2 - Storage



Max Dimensions: 14'11" x 12'11"
Calculated Area: 193 sq. ft
Included: No

Heated: No
Finished: No
Enclosed: No
Contiguous: Yes
Permitted: Yes
Wet space: No
Addition: No
Conversion: No

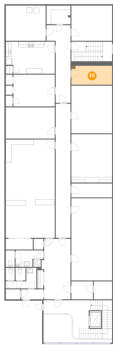
45 Floor 2 - Hall



Max Dimensions: 8'10" x 28'6"
Calculated Area: 174 sq. ft
Included: Yes

Heated: Yes
Finished: Yes
Enclosed: Yes
Contiguous: Yes
Permitted: Yes
Wet space: No
Addition: No
Conversion: No

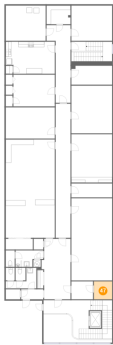
46 Floor 2 - Storage



Max Dimensions: 14'11" x 6'11"
Calculated Area: 104 sq. ft
Included: No

Heated: No
Finished: No
Enclosed: No
Contiguous: Yes
Permitted: Yes
Wet space: No
Addition: No
Conversion: No

47 Floor 2 - Room



Max Dimensions: 6'8" x 6'7"
Calculated Area: 44 sq. ft
Included: No

Heated: Yes
Finished: Yes
Enclosed: Yes
Contiguous: No
Permitted: Yes
Wet space: No
Addition: No
Conversion: No