



Home report


1102 Dusty Rd,Cheyenne,WY,US





Property summary


**1** Garages


**5** Bedrooms

**4** Bathrooms

**1** Half baths

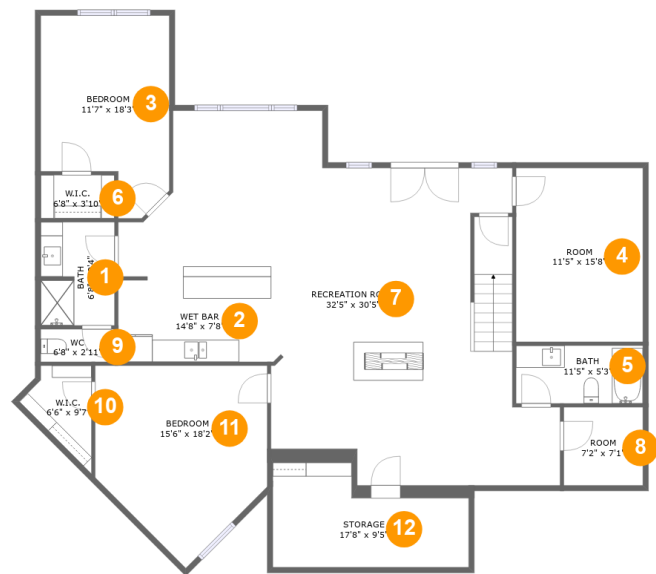
**2** Floors

**4,011** Gross living area sqft

**5,326** Total sqft

Home report

1102 Dusty Rd,Cheyenne,WY,US



Room dimensions

Floor 1 Total sqft: 2067 Living area: 1918

#		Dimensions	sqft	Counted as living area
1	Bath	6'8" x 9'4"	61 sq. ft	Yes
2	Wet Bar	14'8" x 7'8"	112 sq. ft	Yes
3	Bedroom	11'7" x 18'3"	179 sq. ft	Yes
4	Room	11'5" x 15'8"	179 sq. ft	Yes
5	Bath	11'5" x 5'3"	60 sq. ft	Yes
6	W.I.C.	6'8" x 3'10"	26 sq. ft	Yes
7	Recreation Room	32'5" x 30'5"	801 sq. ft	Yes
8	Room	7'2" x 7'1"	50 sq. ft	Yes
9	WC	6'8" x 2'11"	20 sq. ft	Yes
10	W.I.C.	6'6" x 9'7"	38 sq. ft	Yes
11	Bedroom	15'6" x 18'2"	223 sq. ft	Yes

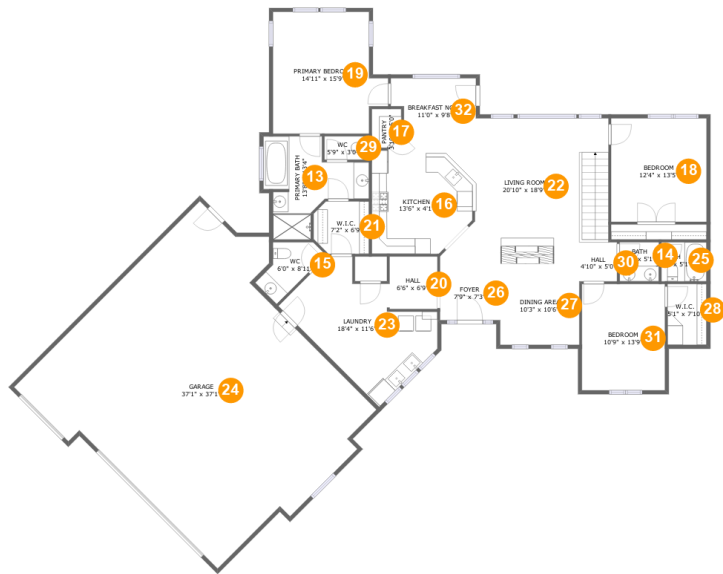
Home report

1102 Dusty Rd,Cheyenne,WY,US

#		Dimensions	sqft	Counted as living area
12	Storage	17'8" x 9'5"	133 sq. ft	No

Home report

1102 Dusty Rd,Cheyenne,WY,US



Room dimensions

Floor 2 Total sqft: 3259 Living area: 2093

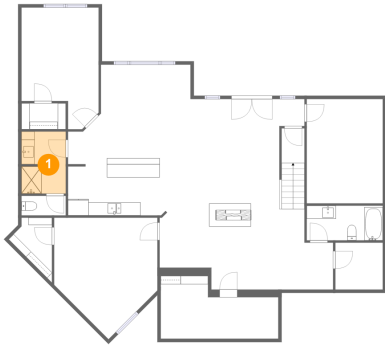
#		Dimensions	sqft	Counted as living area
13	Primary Bath	13'8" x 13'4"	115 sq. ft	Yes
14	Bath	5'1" x 5'1"	26 sq. ft	Yes
15	WC	6'0" x 8'11"	38 sq. ft	Yes
16	Kitchen	13'6" x 4'1"	163 sq. ft	Yes
17	Pantry	3'10" x 5'0"	17 sq. ft	Yes
18	Bedroom	12'4" x 13'5"	165 sq. ft	Yes
19	Primary Bedroom	14'11" x 15'9"	204 sq. ft	Yes
20	Hall	6'6" x 6'9"	43 sq. ft	Yes
21	W.I.C.	7'2" x 6'9"	45 sq. ft	Yes
22	Living Room	20'10" x 18'9"	343 sq. ft	Yes
23	Laundry	18'4" x 11'6"	204 sq. ft	Yes

Home report

1102 Dusty Rd, Cheyenne, WY, US

#		Dimensions	sqft	Counted as living area
24	Garage	37'1" x 37'1"	1108 sq. ft	No
25	Bath	5'10" x 5'1"	29 sq. ft	Yes
26	Foyer	7'9" x 7'3"	57 sq. ft	Yes
27	Dining Area	10'3" x 10'6"	107 sq. ft	Yes
28	W.I.C.	5'1" x 7'10"	40 sq. ft	Yes
29	WC	5'9" x 3'0"	17 sq. ft	Yes
30	Hall	4'10" x 5'0"	25 sq. ft	Yes
31	Bedroom	10'9" x 13'9"	147 sq. ft	Yes
32	Breakfast Nook	11'0" x 9'8"	84 sq. ft	Yes

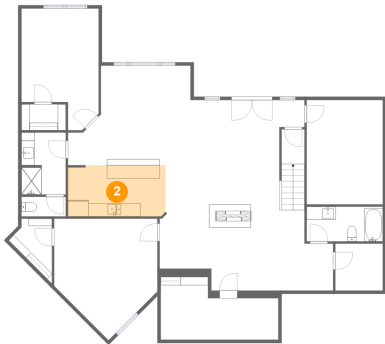
1 Floor 1 - Bath



Dimensions: 6'8" x 9'4"
Area: 61 sq. ft
Counted as living area: Yes

Heated: Yes
Finished: Yes
Enclosed: Yes
Contiguous: Yes
Permitted: Yes
Wet space: Yes
Addition: No
Conversion: No

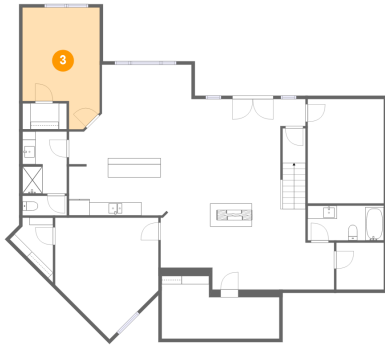
2 Floor 1 - Wet Bar



Dimensions: 14'8" x 7'8"
Area: 112 sq. ft
Counted as living area: Yes

Heated: Yes
Finished: Yes
Enclosed: Yes
Contiguous: Yes
Permitted: Yes
Wet space: No
Addition: No
Conversion: No

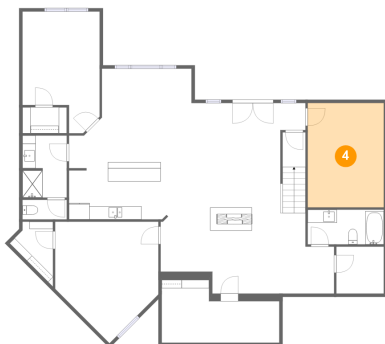
3 Floor 1 - Bedroom



Dimensions: 11'7" x 18'3"
Area: 179 sq. ft
Counted as living area: Yes

Heated: Yes
Finished: Yes
Enclosed: Yes
Contiguous: Yes
Permitted: Yes
Wet space: No
Addition: No
Conversion: No

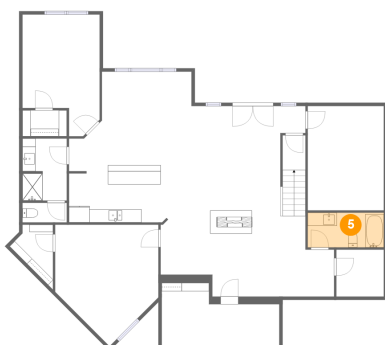
4 Floor 1 - Room



Dimensions: 11'5" x 15'8"
Area: 179 sq. ft
Counted as living area: Yes

Heated: Yes
Finished: Yes
Enclosed: Yes
Contiguous: Yes
Permitted: Yes
Wet space: No
Addition: No
Conversion: No

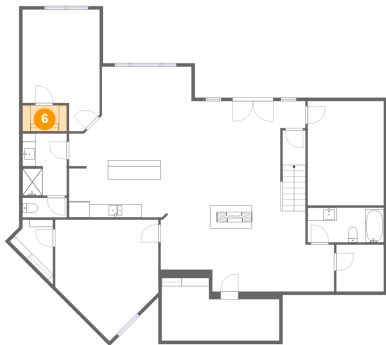
5 Floor 1 - Bath



Dimensions: 11'5" x 5'3"
Area: 60 sq. ft
Counted as living area: Yes

Heated: Yes
Finished: Yes
Enclosed: Yes
Contiguous: Yes
Permitted: Yes
Wet space: Yes
Addition: No
Conversion: No

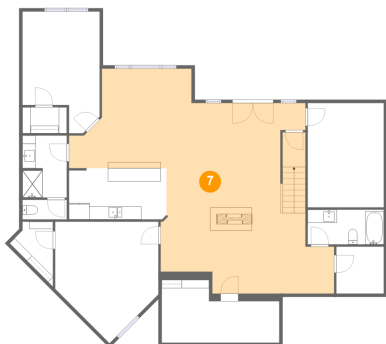
6 Floor 1 - W.I.C.



Dimensions: 6'8" x 3'10"
Area: 26 sq. ft
Counted as living area: Yes

Heated: Yes
Finished: Yes
Enclosed: Yes
Contiguous: Yes
Permitted: Yes
Wet space: No
Addition: No
Conversion: No

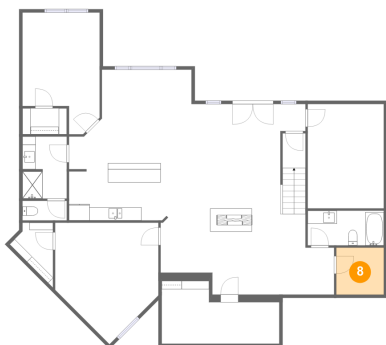
7 Floor 1 - Recreation Room



Dimensions: 32'5" x 30'5"
Area: 801 sq. ft
Counted as living area: Yes

Heated: Yes
Finished: Yes
Enclosed: Yes
Contiguous: Yes
Permitted: Yes
Wet space: No
Addition: No
Conversion: No

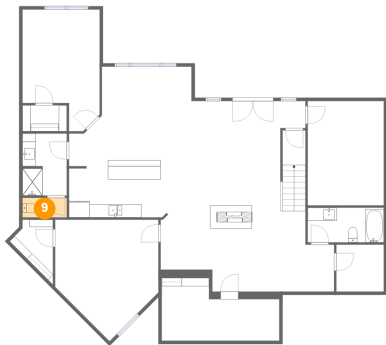
8 Floor 1 - Room



Dimensions: 7'2" x 7'1"
Area: 50 sq. ft
Counted as living area: Yes

Heated: Yes
Finished: Yes
Enclosed: Yes
Contiguous: Yes
Permitted: Yes
Wet space: No
Addition: No
Conversion: No

9 Floor 1 - WC



Dimensions: 6'8" x 2'11"
Area: 20 sq. ft
Counted as living area: Yes

Heated: Yes
Finished: Yes
Enclosed: Yes
Contiguous: Yes
Permitted: Yes
Wet space: Yes
Addition: No
Conversion: No

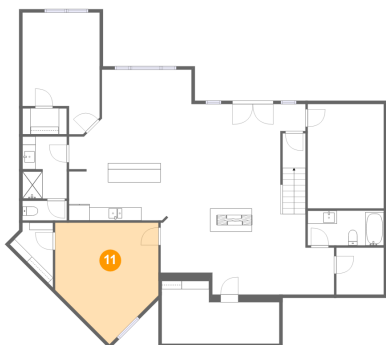
10 Floor 1 - W.I.C.



Dimensions: 6'6" x 9'7"
Area: 38 sq. ft
Counted as living area: Yes

Heated: Yes
Finished: Yes
Enclosed: Yes
Contiguous: Yes
Permitted: Yes
Wet space: No
Addition: No
Conversion: No

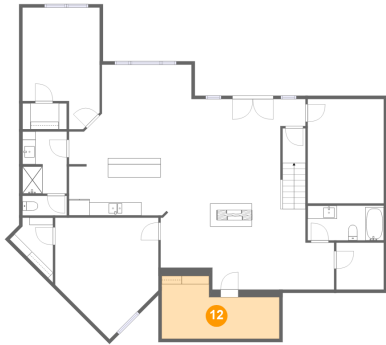
11 Floor 1 - Bedroom



Dimensions: 15'6" x 18'2"
Area: 223 sq. ft
Counted as living area: Yes

Heated: Yes
Finished: Yes
Enclosed: Yes
Contiguous: Yes
Permitted: Yes
Wet space: No
Addition: No
Conversion: No

12 Floor 1 - Storage



Dimensions: 17'8" x 9'5"
Area: 133 sq. ft
Counted as living area: No

Heated: No
Finished: No
Enclosed: No
Contiguous: Yes
Permitted: Yes
Wet space: No
Addition: No
Conversion: No

13 Floor 2 - Primary Bath



Dimensions: 13'8" x 13'4"
Area: 115 sq. ft
Counted as living area: Yes

Heated: Yes
Finished: Yes
Enclosed: Yes
Contiguous: Yes
Permitted: Yes
Wet space: Yes
Addition: No
Conversion: No

14 Floor 2 - Bath



Dimensions: 5'1" x 5'1"
Area: 26 sq. ft
Counted as living area: Yes

Heated: Yes
Finished: Yes
Enclosed: Yes
Contiguous: Yes
Permitted: Yes
Wet space: Yes
Addition: No
Conversion: No

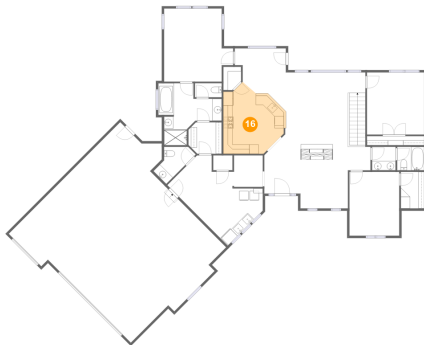
15 Floor 2 - WC



Dimensions: 6'0" x 8'11"
Area: 38 sq. ft
Counted as living area: Yes

Heated: Yes
Finished: Yes
Enclosed: Yes
Contiguous: Yes
Permitted: Yes
Wet space: Yes
Addition: No
Conversion: No

16 Floor 2 - Kitchen



Dimensions: 13'6" x 4'1"
Area: 163 sq. ft
Counted as living area: Yes

Heated: Yes
Finished: Yes
Enclosed: Yes
Contiguous: Yes
Permitted: Yes
Wet space: No
Addition: No
Conversion: No

17 Floor 2 - Pantry



Dimensions: 3'10" x 5'0"
Area: 17 sq. ft
Counted as living area: Yes

Heated: Yes
Finished: Yes
Enclosed: Yes
Contiguous: Yes
Permitted: Yes
Wet space: No
Addition: No
Conversion: No

18 Floor 2 - Bedroom



Dimensions: 12'4" x 13'5"
Area: 165 sq. ft
Counted as living area: Yes

Heated: Yes
Finished: Yes
Enclosed: Yes
Contiguous: Yes
Permitted: Yes
Wet space: No
Addition: No
Conversion: No

19 Floor 2 - Primary Bedroom



Dimensions: 14'11" x 15'9"
Area: 204 sq. ft
Counted as living area: Yes

Heated: Yes
Finished: Yes
Enclosed: Yes
Contiguous: Yes
Permitted: Yes
Wet space: No
Addition: No
Conversion: No

20 Floor 2 - Hall



Dimensions: 6'6" x 6'9"
Area: 43 sq. ft
Counted as living area: Yes

Heated: Yes
Finished: Yes
Enclosed: Yes
Contiguous: Yes
Permitted: Yes
Wet space: No
Addition: No
Conversion: No

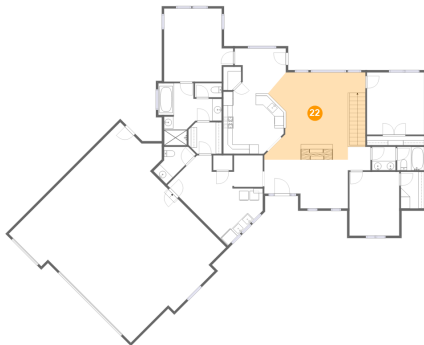
21 Floor 2 - W.I.C.



Dimensions: 7'2" x 6'9"
Area: 45 sq. ft
Counted as living area: Yes

Heated: Yes
Finished: Yes
Enclosed: Yes
Contiguous: Yes
Permitted: Yes
Wet space: No
Addition: No
Conversion: No

22 Floor 2 - Living Room



Dimensions: 20'10" x 18'9"
Area: 343 sq. ft
Counted as living area: Yes

Heated: Yes
Finished: Yes
Enclosed: Yes
Contiguous: Yes
Permitted: Yes
Wet space: No
Addition: No
Conversion: No

23 Floor 2 - Laundry



Dimensions: 18'4" x 11'6"
Area: 204 sq. ft
Counted as living area: Yes

Heated: Yes
Finished: Yes
Enclosed: Yes
Contiguous: Yes
Permitted: Yes
Wet space: No
Addition: No
Conversion: No

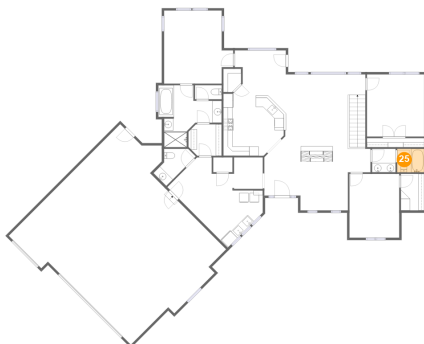
24 Floor 2 - Garage



Dimensions: 37'1" x 37'1"
Area: 1108 sq. ft
Counted as living area: No

Heated: No
Finished: No
Enclosed: Yes
Contiguous: Yes
Permitted: Yes
Wet space: No
Addition: No
Conversion: No

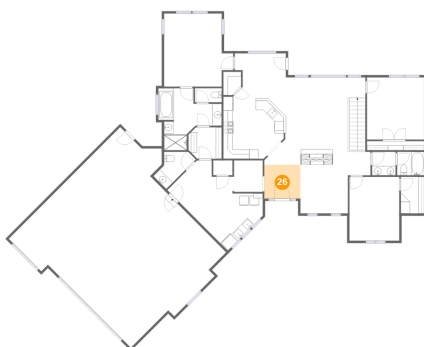
25 Floor 2 - Bath



Dimensions: 5'10" x 5'1"
Area: 29 sq. ft
Counted as living area: Yes

Heated: Yes
Finished: Yes
Enclosed: Yes
Contiguous: Yes
Permitted: Yes
Wet space: Yes
Addition: No
Conversion: No

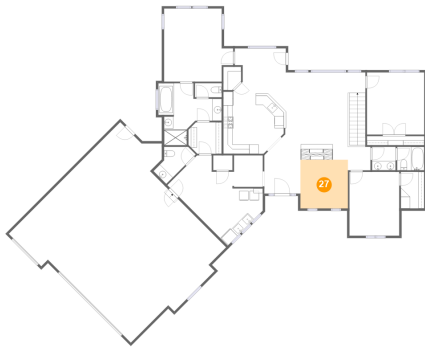
26 Floor 2 - Foyer



Dimensions: 7'9" x 7'3"
Area: 57 sq. ft
Counted as living area: Yes

Heated: Yes
Finished: Yes
Enclosed: Yes
Contiguous: Yes
Permitted: Yes
Wet space: No
Addition: No
Conversion: No

27 Floor 2 - Dining Area



Dimensions: 10'3" x 10'6"
Area: 107 sq. ft
Counted as living area: Yes

Heated: Yes
Finished: Yes
Enclosed: Yes
Contiguous: Yes
Permitted: Yes
Wet space: No
Addition: No
Conversion: No

28 Floor 2 - W.I.C.



Dimensions: 5'1" x 7'10"
Area: 40 sq. ft
Counted as living area: Yes

Heated: Yes
Finished: Yes
Enclosed: Yes
Contiguous: Yes
Permitted: Yes
Wet space: No
Addition: No
Conversion: No

29 Floor 2 - WC



Dimensions: 5'9" x 3'0"
Area: 17 sq. ft
Counted as living area: Yes

Heated: Yes
Finished: Yes
Enclosed: Yes
Contiguous: Yes
Permitted: Yes
Wet space: Yes
Addition: No
Conversion: No

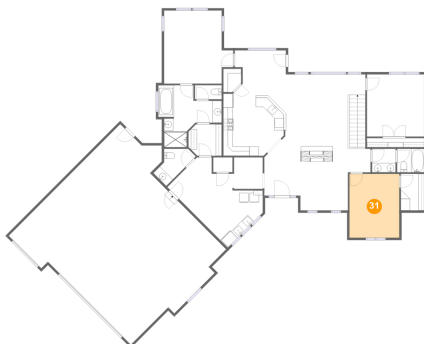
30 Floor 2 - Hall



Dimensions: 4'10" x 5'0"
Area: 25 sq. ft
Counted as living area: Yes

Heated: Yes
Finished: Yes
Enclosed: Yes
Contiguous: Yes
Permitted: Yes
Wet space: No
Addition: No
Conversion: No

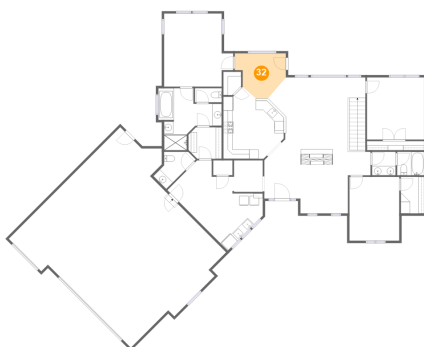
31 Floor 2 - Bedroom



Dimensions: 10'9" x 13'9"
Area: 147 sq. ft
Counted as living area: Yes

Heated: Yes
Finished: Yes
Enclosed: Yes
Contiguous: Yes
Permitted: Yes
Wet space: No
Addition: No
Conversion: No

32 Floor 2 - Breakfast Nook



Dimensions: 11'0" x 9'8"
Area: 84 sq. ft
Counted as living area: Yes

Heated: Yes
Finished: Yes
Enclosed: Yes
Contiguous: Yes
Permitted: Yes
Wet space: No
Addition: No
Conversion: No