


Home report


3742 Grantham Court, Village of Woodland Hills, Palm Harbor,  
Pinellas County, Florida, United States, 34684



**Total GLA: 1551 sq. ft**  
Floor 1: 851 sq. ft, Floor 2: 700 sq. ft  
Excluded: Garage 399 sq. ft, Screened porch 483 sq. ft, Fireplace 11 sq. ft

Property summary

 **2** Floors

 **3** Bedrooms

 **2** Bathrooms

Home report

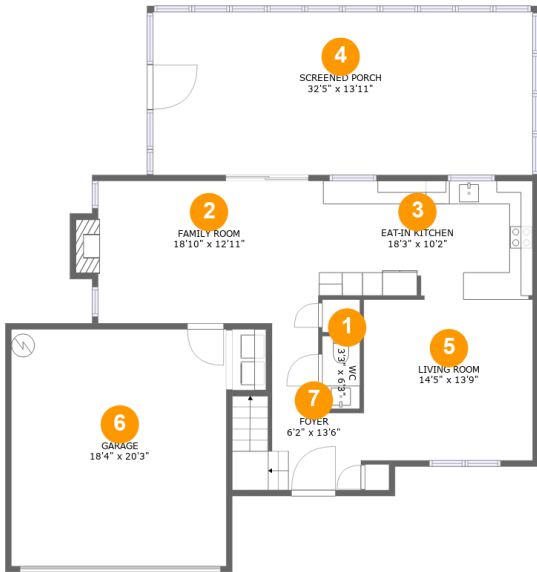
**3742 Grantham Court, Village of Woodland Hills, Palm Harbor,  
Pinellas County, Florida, United States, 34684**

 **1**  
Half baths

 **1**  
Garages

Home report

3742 Grantham Court, Village of Woodland Hills, Palm Harbor,  
Pinellas County, Florida, United States, 34684



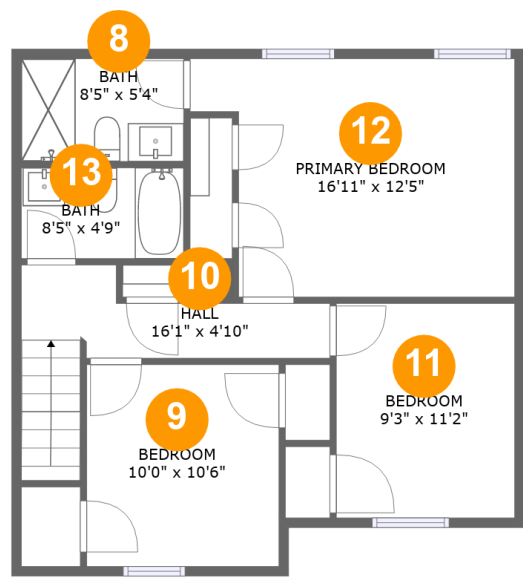
Room dimensions

Floor 1 Total:851sqft    Excluded: 893sqft

#		Max Dimensions	sqft	Included
1	WC	3'3" x 6'3"	20 sq. ft	Yes
2	Family Room	18'10" x 12'11"	241 sq. ft	Yes
3	Eat-in Kitchen	18'3" x 10'2"	182 sq. ft	Yes
4	Screened Porch	32'5" x 13'11"	452 sq. ft	No
5	Living Room	14'5" x 13'9"	199 sq. ft	Yes
6	Garage	18'4" x 20'3"	372 sq. ft	No
7	Foyer	6'2" x 13'6"	103 sq. ft	Yes

Home report

3742 Grantham Court, Village of Woodland Hills, Palm Harbor,  
Pinellas County, Florida, United States, 34684



Room dimensions

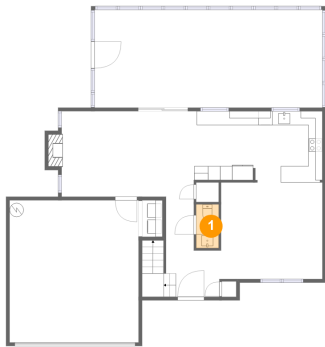
Floor 2

Total:700sqft

Excluded: 0sqft

#		Max Dimensions	sqft	Included
8	Bath	8'5" x 5'4"	45 sq. ft	Yes
9	Bedroom	10'0" x 10'6"	105 sq. ft	Yes
10	Hall	16'1" x 4'10"	75 sq. ft	Yes
11	Bedroom	9'3" x 11'2"	104 sq. ft	Yes
12	Primary Bedroom	16'11" x 12'5"	185 sq. ft	Yes
13	Bath	8'5" x 4'9"	40 sq. ft	Yes

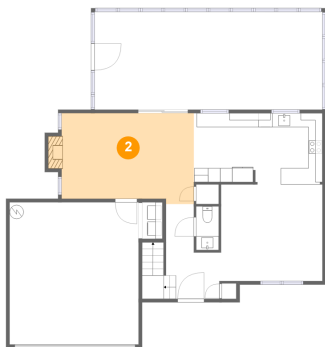
1 Floor 1 - WC



Max Dimensions: 3'3" x 6'3"  
Calculated Area: 20 sq. ft  
Included: Yes

Heated: Yes  
Finished: Yes  
Enclosed: Yes  
Contiguous: Yes  
Permitted: Yes  
Wet space: Yes  
Addition: No  
Conversion: No

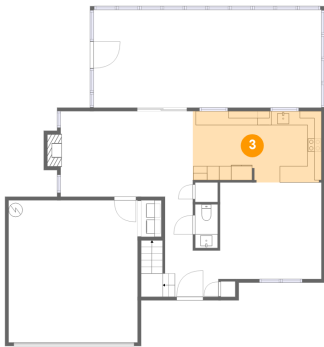
2 Floor 1 - Family Room



Max Dimensions: 18'10" x 12'11"  
Calculated Area: 241 sq. ft  
Included: Yes

Heated: Yes  
Finished: Yes  
Enclosed: Yes  
Contiguous: Yes  
Permitted: Yes  
Wet space: No  
Addition: No  
Conversion: No

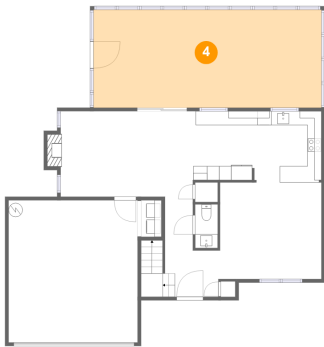
3 Floor 1 - Eat-in Kitchen



Max Dimensions: 18'3" x 10'2"  
Calculated Area: 182 sq. ft  
Included: Yes

Heated: Yes  
Finished: Yes  
Enclosed: Yes  
Contiguous: Yes  
Permitted: Yes  
Wet space: No  
Addition: No  
Conversion: No

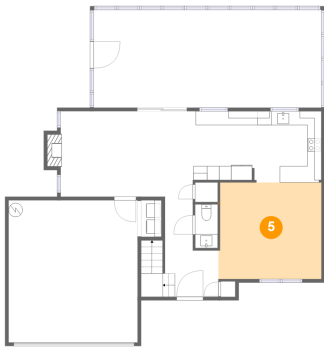
4 Floor 1 - Screened Porch



Max Dimensions: 32'5" x 13'11"  
Calculated Area: 452 sq. ft  
Included: No

Heated: No  
Finished: Yes  
Enclosed: No  
Contiguous: Yes  
Permitted: Yes  
Wet space: No  
Addition: No  
Conversion: No

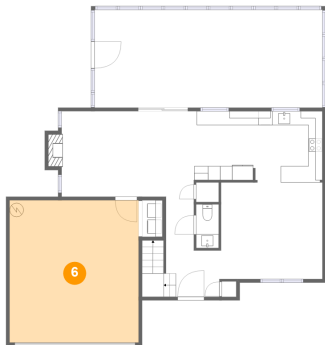
5 Floor 1 - Living Room



Max Dimensions: 14'5" x 13'9"  
Calculated Area: 199 sq. ft  
Included: Yes

Heated: Yes  
Finished: Yes  
Enclosed: Yes  
Contiguous: Yes  
Permitted: Yes  
Wet space: No  
Addition: No  
Conversion: No

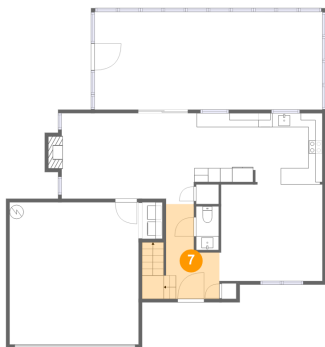
6 Floor 1 - Garage



Max Dimensions: 18'4" x 20'3"  
Calculated Area: 372 sq. ft  
Included: No

Heated: No  
Finished: No  
Enclosed: Yes  
Contiguous: Yes  
Permitted: Yes  
Wet space: No  
Addition: No  
Conversion: No

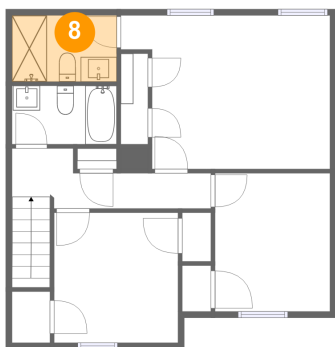
7 Floor 1 - Foyer



Max Dimensions: 6'2" x 13'6"  
Calculated Area: 103 sq. ft  
Included: Yes

Heated: Yes  
Finished: Yes  
Enclosed: Yes  
Contiguous: Yes  
Permitted: Yes  
Wet space: No  
Addition: No  
Conversion: No

8 Floor 2 - Bath

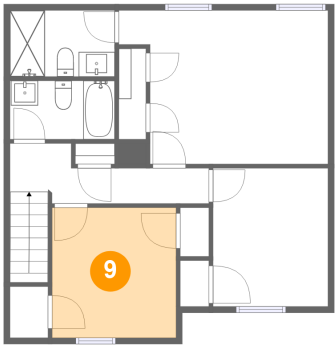


Max Dimensions: 8'5" x 5'4"  
Calculated Area: 45 sq. ft  
Included: Yes

Heated: Yes  
Finished: Yes  
Enclosed: Yes  
Contiguous: Yes  
Permitted: Yes  
Wet space: Yes  
Addition: No  
Conversion: No

3742 Grantham Court, Village of Woodland Hills, Palm Harbor,  
Pinellas County, Florida, United States, 34684

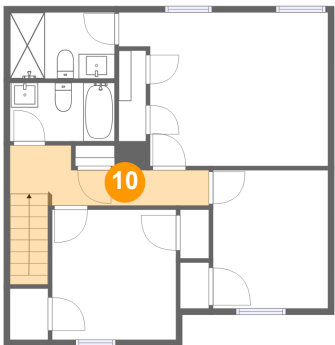
9 Floor 2 - Bedroom



Max Dimensions: 10'0" x 10'6"  
Calculated Area: 105 sq. ft  
Included: Yes

Heated: Yes  
Finished: Yes  
Enclosed: Yes  
Contiguous: Yes  
Permitted: Yes  
Wet space: No  
Addition: No  
Conversion: No

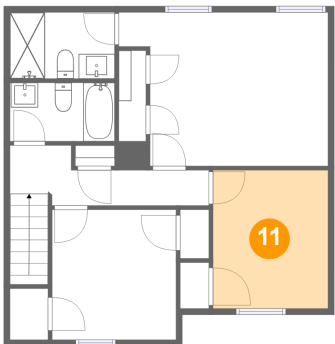
10 Floor 2 - Hall



Max Dimensions: 16'1" x 4'10"  
Calculated Area: 75 sq. ft  
Included: Yes

Heated: Yes  
Finished: Yes  
Enclosed: Yes  
Contiguous: Yes  
Permitted: Yes  
Wet space: No  
Addition: No  
Conversion: No

11 Floor 2 - Bedroom

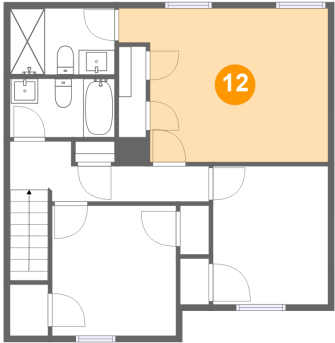


Max Dimensions: 9'3" x 11'2"  
Calculated Area: 104 sq. ft  
Included: Yes

Heated: Yes  
Finished: Yes  
Enclosed: Yes  
Contiguous: Yes  
Permitted: Yes  
Wet space: No  
Addition: No  
Conversion: No



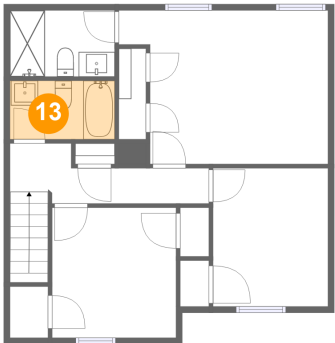
12 Floor 2 - Primary Bedroom



Max Dimensions: 16'11" x 12'5"  
Calculated Area: 185 sq. ft  
Included: Yes

Heated: Yes  
Finished: Yes  
Enclosed: Yes  
Contiguous: Yes  
Permitted: Yes  
Wet space: No  
Addition: No  
Conversion: No

13 Floor 2 - Bath



Max Dimensions: 8'5" x 4'9"  
Calculated Area: 40 sq. ft  
Included: Yes

Heated: Yes  
Finished: Yes  
Enclosed: Yes  
Contiguous: Yes  
Permitted: Yes  
Wet space: Yes  
Addition: No  
Conversion: No