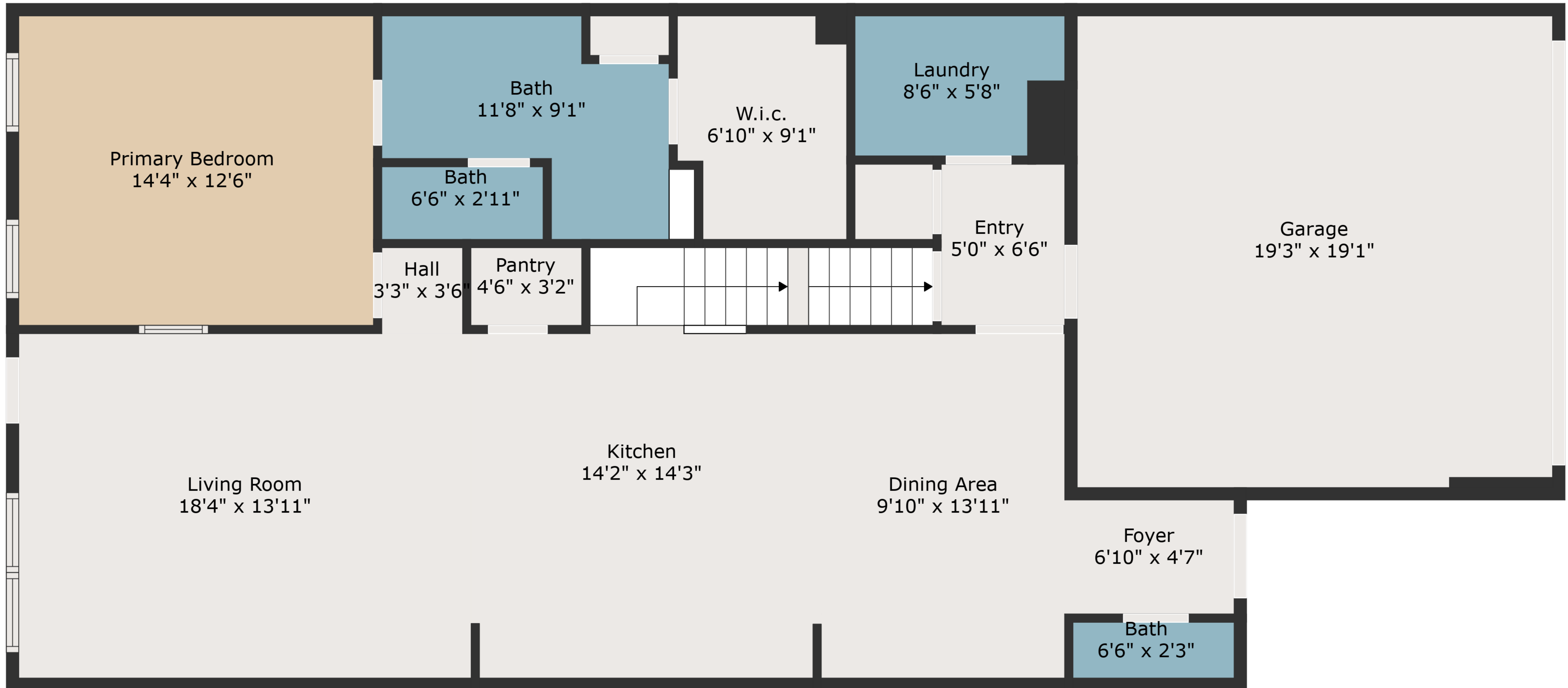


Basement
49'3" x 26'10"

TOTAL: 1860 sq. ft
BELOW GROUND: 0 sq. ft, FLOOR 2: 1186 sq. ft, FLOOR 3: 674 sq. ft
EXCLUDED AREAS: BASEMENT: 1185 sq. ft, GARAGE: 368 sq. ft

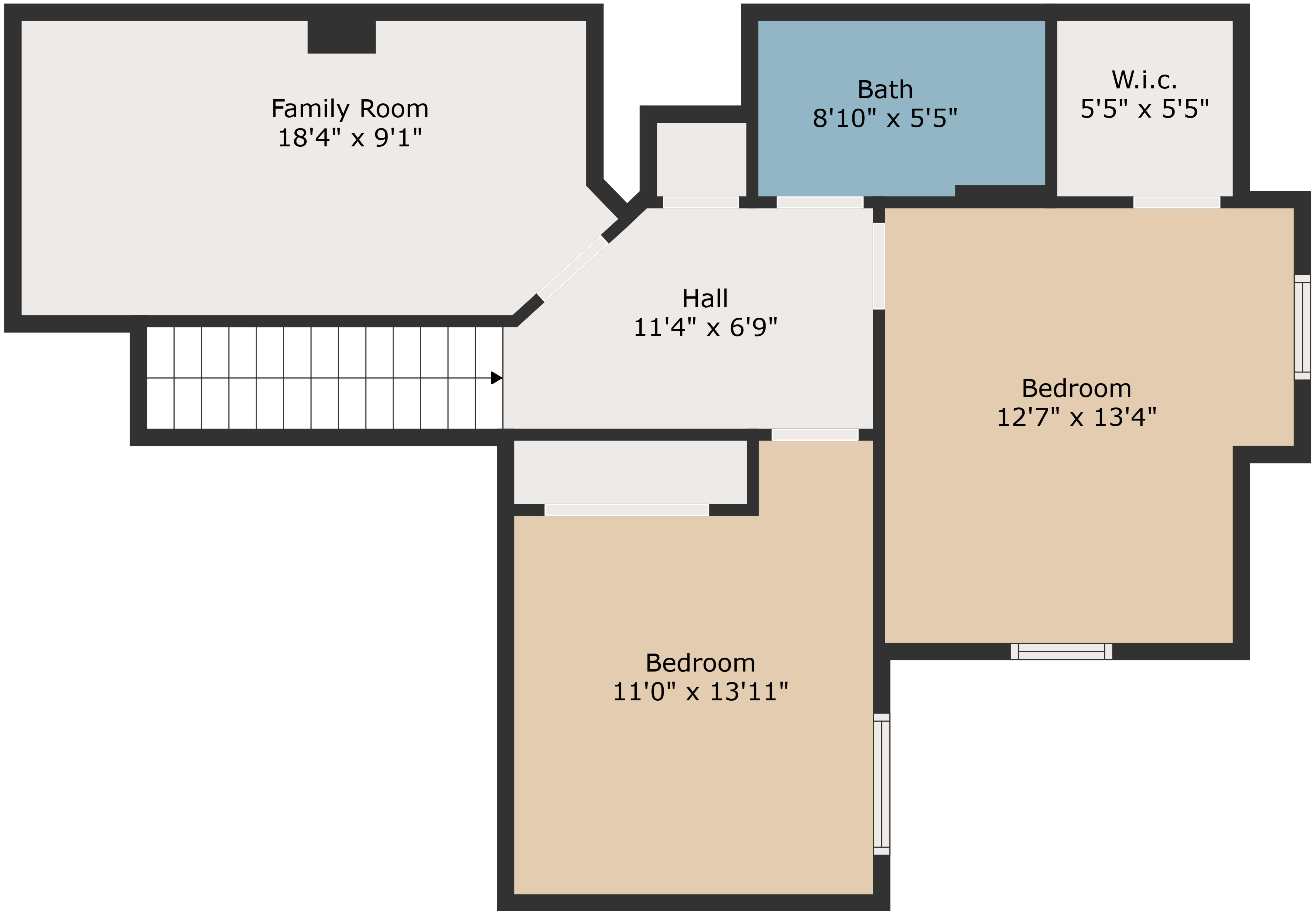
Measurements Are Deemed Highly Reliable But Not Guaranteed.



TOTAL: 1860 sq. ft

BELOW GROUND: 0 sq. ft, FLOOR 2: 1186 sq. ft, FLOOR 3: 674 sq. ft
 EXCLUDED AREAS: BASEMENT: 1185 sq. ft, GARAGE: 368 sq. ft

Measurements Are Deemed Highly Reliable But Not Guaranteed.

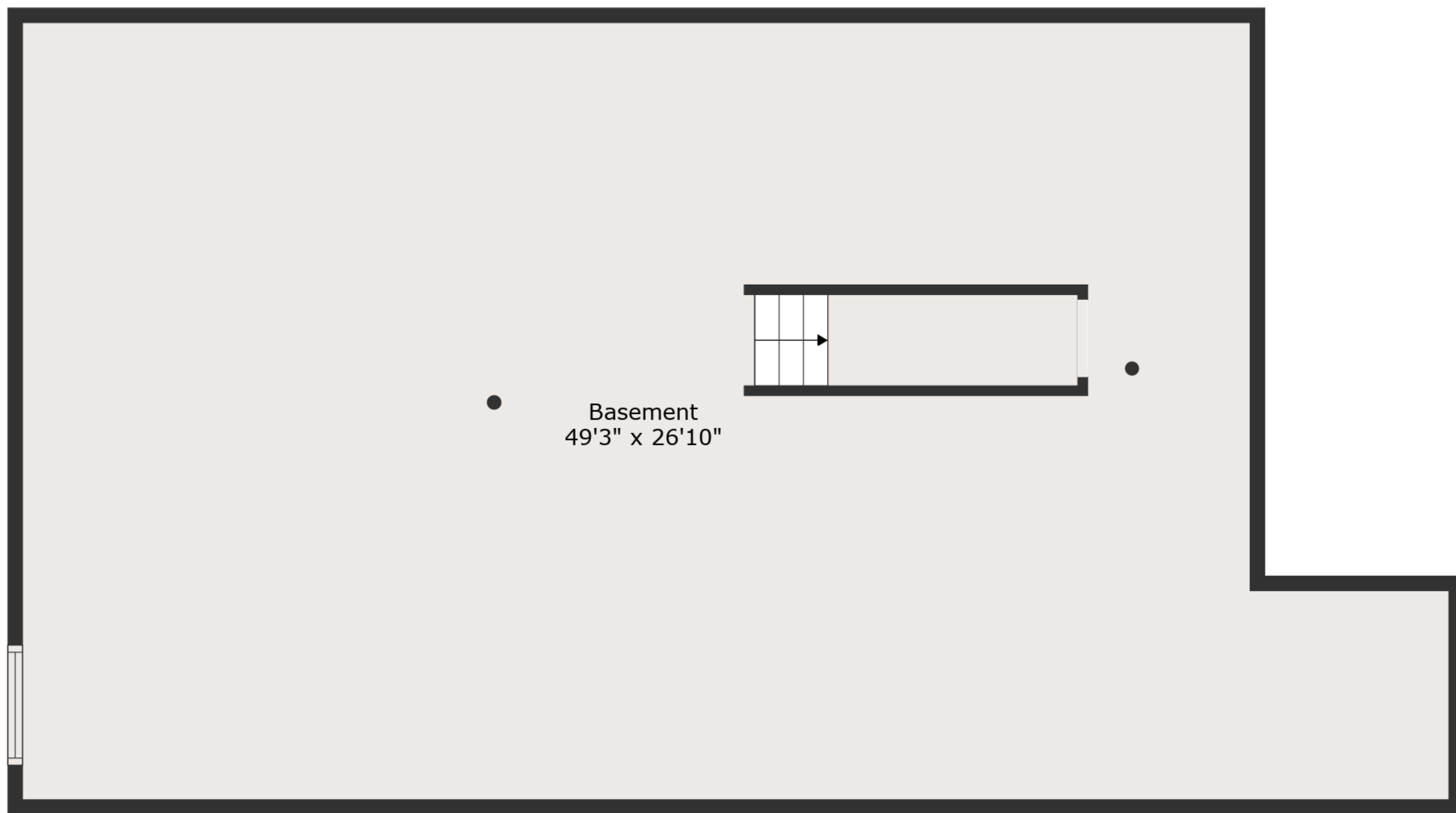


TOTAL: 1860 sq. ft
BELOW GROUND: 0 sq. ft, FLOOR 2: 1186 sq. ft, FLOOR 3: 674 sq. ft
EXCLUDED AREAS: BASEMENT: 1185 sq. ft, GARAGE: 368 sq. ft

Measurements Are Deemed Highly Reliable But Not Guaranteed.



Floor 2



Floor 1



Floor 3

TOTAL: 1860 sq. ft
 BELOW GROUND: 0 sq. ft, FLOOR 2: 1186 sq. ft, FLOOR 3: 674 sq. ft
 EXCLUDED AREAS: BASEMENT: 1185 sq. ft, GARAGE: 368 sq. ft

Measurements Are Deemed Highly Reliable But Not Guaranteed.