

Home report

3893 Windsor Court, Hermitage, Mercer County, Pennsylvania,  
United States, 16148



**Total Area: 3316 sq. ft**  
Below Ground: 1067 sq. ft, Floor 2: 1454 sq. ft, Floor 3: 795 sq. ft  
Excluded: Utility 343 sq. ft, Garage 625 sq. ft, Outdoor Patio 331 sq. ft, Outdoor Deck 421 sq. ft, Outdoor Deck Covered 112 sq. ft, Fireplace 15 sq. ft, Opentobelow 352 sq. ft, Low Ceiling 42 sq. ft, Walls: 277 sq. ft

Property summary



**3**  
Floors



**4**  
Bedrooms



**2**  
Bathrooms

Home report

**3893 Windsor Court, Hermitage, Mercer County, Pennsylvania,  
United States, 16148**



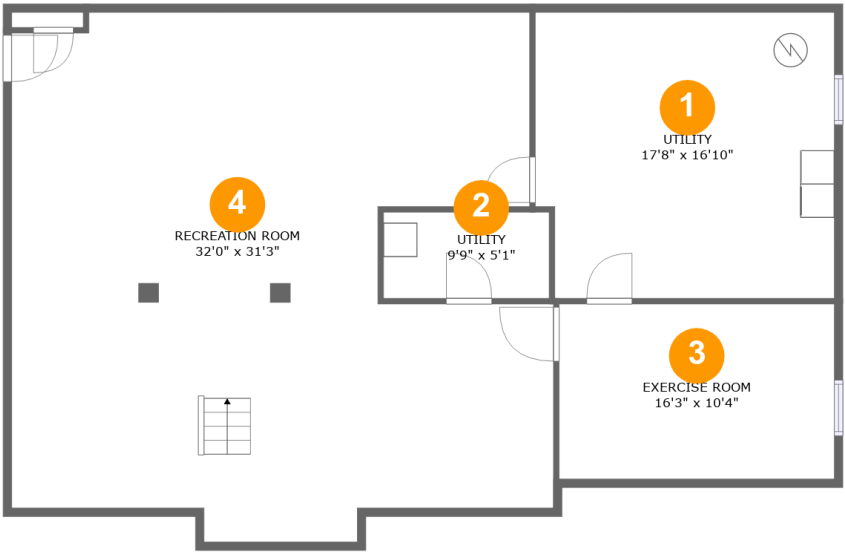
**1**  
Half baths



**1**  
Garages

Home report

3893 Windsor Court, Hermitage, Mercer County, Pennsylvania,  
United States, 16148



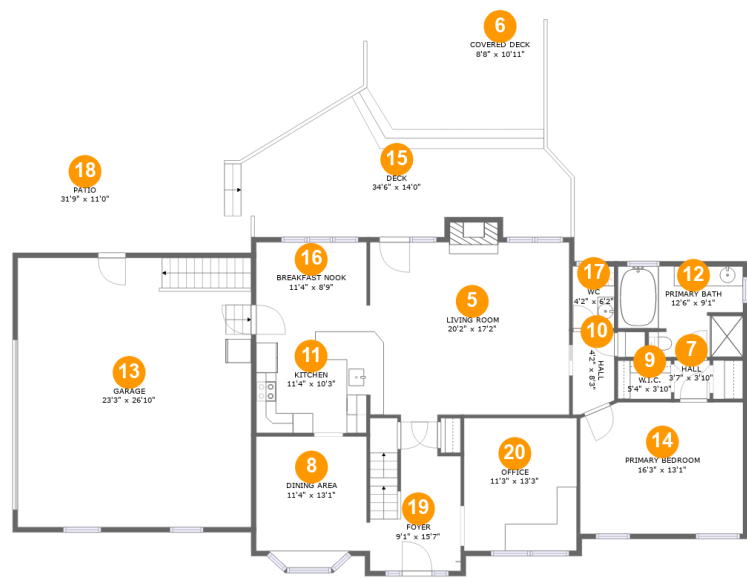
Room dimensions

Floor 1 Below ground Total:1067sqft    Excluded: 343sqft

#		Max Dimensions	sqft	Included
1	Utility	17'8" x 16'10"	291 sq. ft	No
2	Utility	9'9" x 5'1"	50 sq. ft	No
3	Exercise Room	16'3" x 10'4"	168 sq. ft	Yes
4	Recreation Room	32'0" x 31'3"	872 sq. ft	Yes

Home report

3893 Windsor Court, Hermitage, Mercer County, Pennsylvania,  
United States, 16148



Room dimensions

Floor 2 Total:1454sqft   Excluded: 1504sqft

#		Max Dimensions	sqft	Included
5	Living Room	20'2" x 17'2"	352 sq. ft	Yes
6	Covered Deck	8'8" x 10'11"	112 sq. ft	No
7	Hall	3'7" x 3'10"	14 sq. ft	Yes
8	Dining Area	11'4" x 13'1"	137 sq. ft	Yes
9	W.I.C.	5'4" x 3'10"	20 sq. ft	Yes
10	Hall	4'2" x 8'3"	32 sq. ft	Yes
11	Kitchen	11'4" x 10'3"	114 sq. ft	Yes
12	Primary Bath	12'6" x 9'1"	103 sq. ft	Yes
13	Garage	23'3" x 26'10"	625 sq. ft	No
14	Primary Bedroom	16'3" x 13'1"	210 sq. ft	Yes
15	Deck	34'6" x 14'0"	421 sq. ft	No

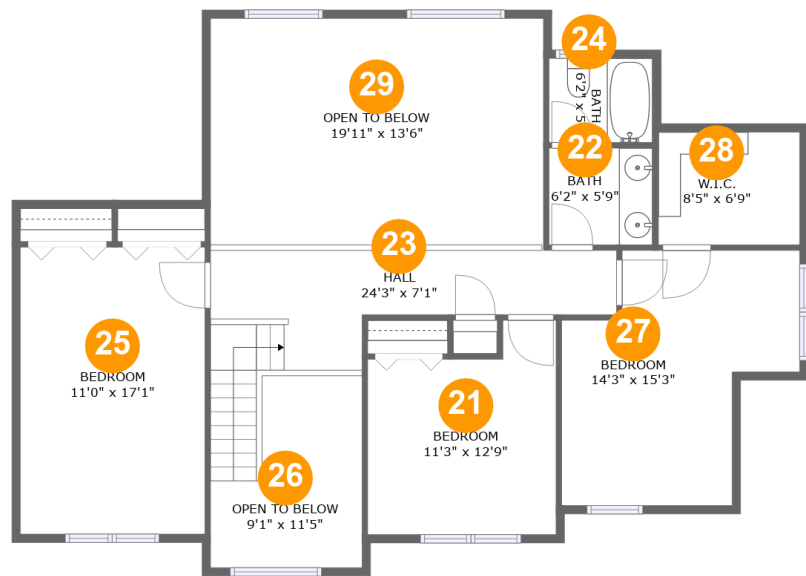
## Home report

**3893 Windsor Court, Hermitage, Mercer County, Pennsylvania,  
United States, 16148**

#		Max Dimensions	sqft	Included
16	Breakfast Nook	11'4" x 8'9"	97 sq. ft	Yes
17	WC	4'2" x 6'2"	26 sq. ft	Yes
18	Patio	31'9" x 11'0"	331 sq. ft	No
19	Foyer	9'1" x 15'7"	128 sq. ft	Yes
20	Office	11'3" x 13'3"	149 sq. ft	Yes

Home report

3893 Windsor Court, Hermitage, Mercer County, Pennsylvania,  
United States, 16148

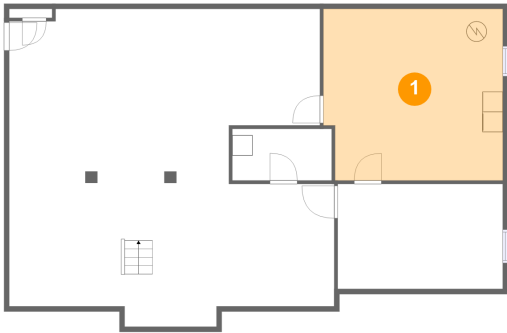


Room dimensions

Floor 3 Total:795sqft    Excluded: 394sqft

#		Max Dimensions	sqft	Included
21	Bedroom	11'3" x 12'9"	125 sq. ft	Yes
22	Bath	6'2" x 5'9"	36 sq. ft	Yes
23	Hall	24'3" x 7'1"	152 sq. ft	Yes
24	Bath	6'2" x 5'0"	31 sq. ft	Yes
25	Bedroom	11'0" x 17'1"	189 sq. ft	Yes
26	Open To Below	9'1" x 11'5"	84 sq. ft	No
27	Bedroom	14'3" x 15'3"	156 sq. ft	Yes
28	W.I.C.	8'5" x 6'9"	28 sq. ft	Yes
29	Open To Below	19'11" x 13'6"	268 sq. ft	No

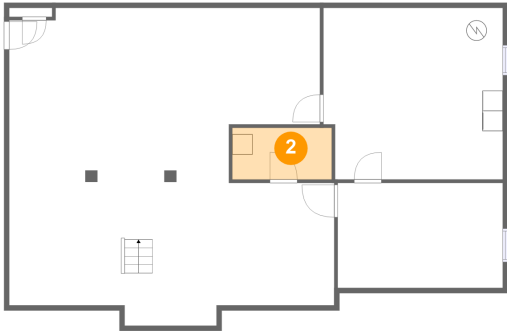
1 Floor 1 - Utility



Max Dimensions: 17'8" x 16'10"  
Calculated Area: 291 sq. ft  
Included: No

Heated: Yes  
Finished: No  
Enclosed: Yes  
Contiguous: Yes  
Permitted: Yes  
Wet space: No  
Addition: No  
Conversion: No

2 Floor 1 - Utility

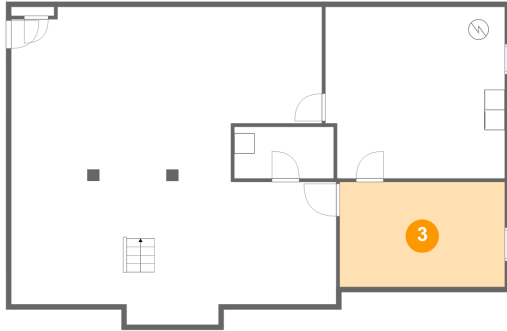


Max Dimensions: 9'9" x 5'1"  
Calculated Area: 50 sq. ft  
Included: No

Heated: Yes  
Finished: No  
Enclosed: Yes  
Contiguous: Yes  
Permitted: Yes  
Wet space: No  
Addition: No  
Conversion: No

3893 Windsor Court, Hermitage, Mercer County, Pennsylvania,  
United States, 16148

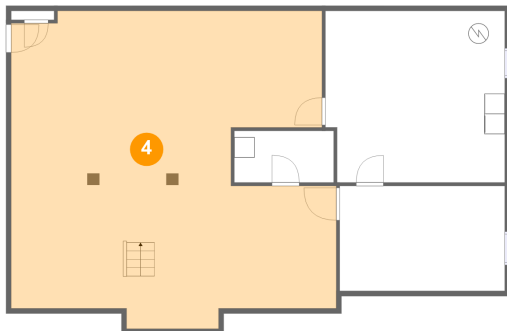
### 3 Floor 1 - Exercise Room



Max Dimensions: 16'3" x 10'4"  
Calculated Area: 168 sq. ft  
Included: Yes

Heated: Yes  
Finished: Yes  
Enclosed: Yes  
Contiguous: Yes  
Permitted: Yes  
Wet space: No  
Addition: No  
Conversion: No

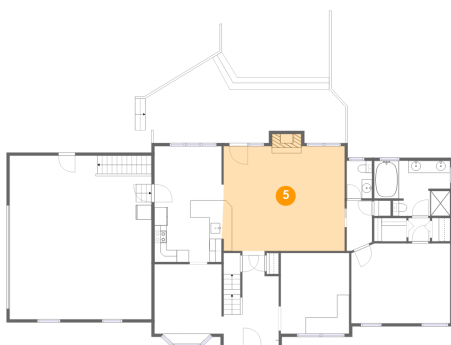
### 4 Floor 1 - Recreation Room



Max Dimensions: 32'0" x 31'3"  
Calculated Area: 872 sq. ft  
Included: Yes

Heated: Yes  
Finished: Yes  
Enclosed: Yes  
Contiguous: Yes  
Permitted: Yes  
Wet space: No  
Addition: No  
Conversion: No

### 5 Floor 2 - Living Room

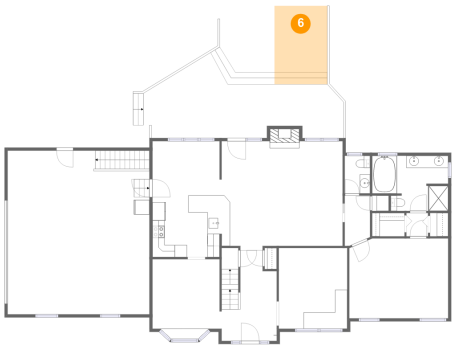


Max Dimensions: 20'2" x 17'2"  
Calculated Area: 352 sq. ft  
Included: Yes

Heated: Yes  
Finished: Yes  
Enclosed: Yes  
Contiguous: Yes  
Permitted: Yes  
Wet space: No  
Addition: No  
Conversion: No



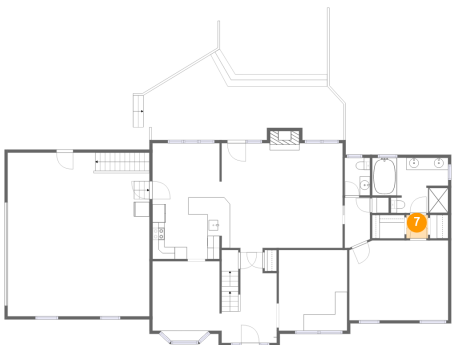
6 Floor 2 - Covered Deck



Max Dimensions: 8'8" x 10'11"  
Calculated Area: 112 sq. ft  
Included: No

Heated: No  
Finished: Yes  
Enclosed: No  
Contiguous: Yes  
Permitted: Yes  
Wet space: No  
Addition: No  
Conversion: No

7 Floor 2 - Hall



Max Dimensions: 3'7" x 3'10"  
Calculated Area: 14 sq. ft  
Included: Yes

Heated: Yes  
Finished: Yes  
Enclosed: Yes  
Contiguous: Yes  
Permitted: Yes  
Wet space: No  
Addition: No  
Conversion: No

8 Floor 2 - Dining Area



Max Dimensions: 11'4" x 13'1"  
Calculated Area: 137 sq. ft  
Included: Yes

Heated: Yes  
Finished: Yes  
Enclosed: Yes  
Contiguous: Yes  
Permitted: Yes  
Wet space: No  
Addition: No  
Conversion: No

9 Floor 2 - W.I.C.



Max Dimensions: 5'4" x 3'10"  
Calculated Area: 20 sq. ft  
Included: Yes

Heated: Yes  
Finished: Yes  
Enclosed: Yes  
Contiguous: Yes  
Permitted: Yes  
Wet space: No  
Addition: No  
Conversion: No

10 Floor 2 - Hall



Max Dimensions: 4'2" x 8'3"  
Calculated Area: 32 sq. ft  
Included: Yes

Heated: Yes  
Finished: Yes  
Enclosed: Yes  
Contiguous: Yes  
Permitted: Yes  
Wet space: No  
Addition: No  
Conversion: No

11 Floor 2 - Kitchen

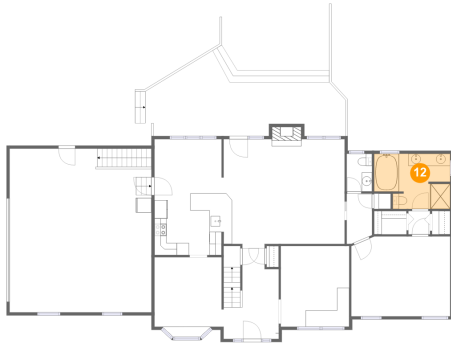


Max Dimensions: 11'4" x 10'3"  
Calculated Area: 114 sq. ft  
Included: Yes

Heated: Yes  
Finished: Yes  
Enclosed: Yes  
Contiguous: Yes  
Permitted: Yes  
Wet space: No  
Addition: No  
Conversion: No

3893 Windsor Court, Hermitage, Mercer County, Pennsylvania,  
United States, 16148

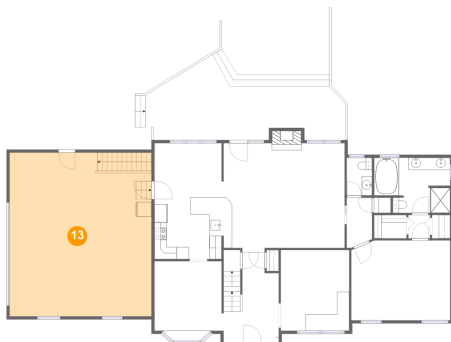
## 12 Floor 2 - Primary Bath



Max Dimensions: 12'6" x 9'1"  
Calculated Area: 103 sq. ft  
Included: Yes

Heated: Yes  
Finished: Yes  
Enclosed: Yes  
Contiguous: Yes  
Permitted: Yes  
Wet space: Yes  
Addition: No  
Conversion: No

## 13 Floor 2 - Garage



Max Dimensions: 23'3" x 26'10"  
Calculated Area: 625 sq. ft  
Included: No

Heated: No  
Finished: No  
Enclosed: Yes  
Contiguous: Yes  
Permitted: Yes  
Wet space: No  
Addition: No  
Conversion: No

## 14 Floor 2 - Primary Bedroom



Max Dimensions: 16'3" x 13'1"  
Calculated Area: 210 sq. ft  
Included: Yes

Heated: Yes  
Finished: Yes  
Enclosed: Yes  
Contiguous: Yes  
Permitted: Yes  
Wet space: No  
Addition: No  
Conversion: No

3893 Windsor Court, Hermitage, Mercer County, Pennsylvania,  
United States, 16148

## 15 Floor 2 - Deck



Max Dimensions: 34'6" x 14'0"  
Calculated Area: 421 sq. ft  
Included: No

Heated: No  
Finished: Yes  
Enclosed: No  
Contiguous: Yes  
Permitted: Yes  
Wet space: No  
Addition: No  
Conversion: No

## 16 Floor 2 - Breakfast Nook



Max Dimensions: 11'4" x 8'9"  
Calculated Area: 97 sq. ft  
Included: Yes

Heated: Yes  
Finished: Yes  
Enclosed: Yes  
Contiguous: Yes  
Permitted: Yes  
Wet space: No  
Addition: No  
Conversion: No

## 17 Floor 2 - WC

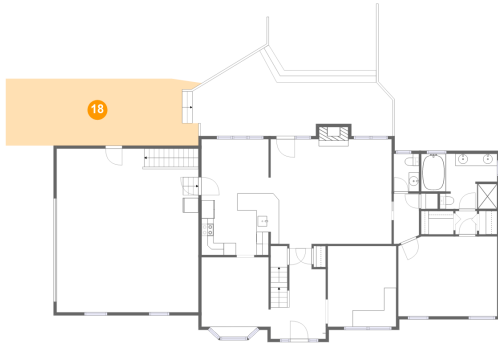


Max Dimensions: 4'2" x 6'2"  
Calculated Area: 26 sq. ft  
Included: Yes

Heated: Yes  
Finished: Yes  
Enclosed: Yes  
Contiguous: Yes  
Permitted: Yes  
Wet space: Yes  
Addition: No  
Conversion: No

3893 Windsor Court, Hermitage, Mercer County, Pennsylvania,  
United States, 16148

## 18 Floor 2 - Patio



Max Dimensions: 31'9" x 11'0"  
Calculated Area: 331 sq. ft  
Included: No

Heated: No  
Finished: Yes  
Enclosed: No  
Contiguous: Yes  
Permitted: Yes  
Wet space: No  
Addition: No  
Conversion: No

## 19 Floor 2 - Foyer



Max Dimensions: 9'1" x 15'7"  
Calculated Area: 128 sq. ft  
Included: Yes

Heated: Yes  
Finished: Yes  
Enclosed: Yes  
Contiguous: Yes  
Permitted: Yes  
Wet space: No  
Addition: No  
Conversion: No

## 20 Floor 2 - Office

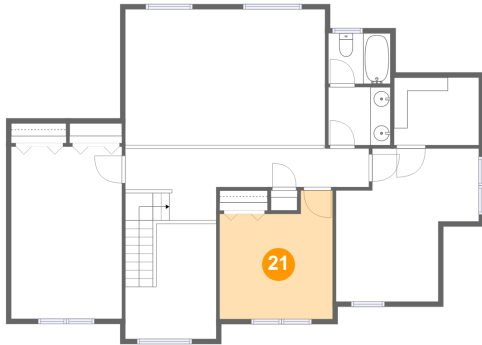


Max Dimensions: 11'3" x 13'3"  
Calculated Area: 149 sq. ft  
Included: Yes

Heated: Yes  
Finished: Yes  
Enclosed: Yes  
Contiguous: Yes  
Permitted: Yes  
Wet space: No  
Addition: No  
Conversion: No

3893 Windsor Court, Hermitage, Mercer County, Pennsylvania,  
United States, 16148

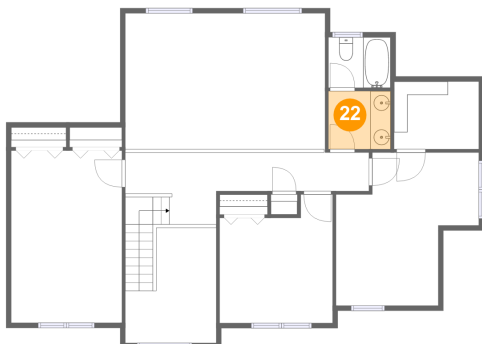
### 21 Floor 3 - Bedroom



Max Dimensions: 11'3" x 12'9"  
Calculated Area: 125 sq. ft  
Included: Yes

Heated: Yes  
Finished: Yes  
Enclosed: Yes  
Contiguous: Yes  
Permitted: Yes  
Wet space: No  
Addition: No  
Conversion: No

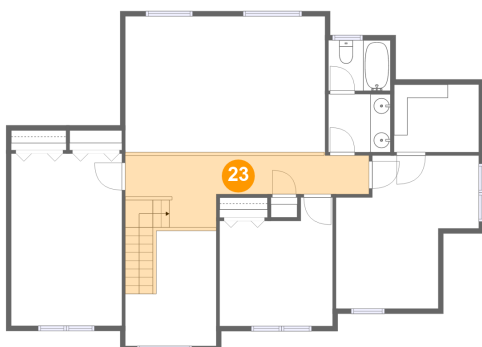
### 22 Floor 3 - Bath



Max Dimensions: 6'2" x 5'9"  
Calculated Area: 36 sq. ft  
Included: Yes

Heated: Yes  
Finished: Yes  
Enclosed: Yes  
Contiguous: Yes  
Permitted: Yes  
Wet space: Yes  
Addition: No  
Conversion: No

### 23 Floor 3 - Hall



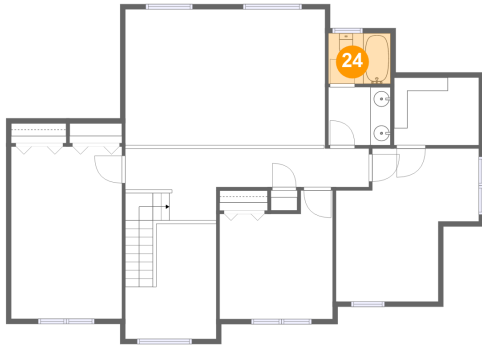
Max Dimensions: 24'3" x 7'1"  
Calculated Area: 152 sq. ft  
Included: Yes

Heated: Yes  
Finished: Yes  
Enclosed: Yes  
Contiguous: Yes  
Permitted: Yes  
Wet space: No  
Addition: No  
Conversion: No

## Home report

3893 Windsor Court, Hermitage, Mercer County, Pennsylvania,  
United States, 16148

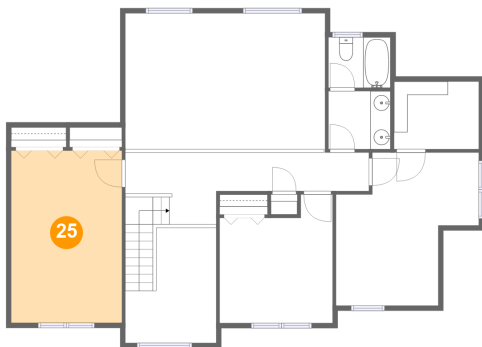
### 24 Floor 3 - Bath



Max Dimensions: 6'2" x 5'0"  
Calculated Area: 31 sq. ft  
Included: Yes

Heated: Yes  
Finished: Yes  
Enclosed: Yes  
Contiguous: Yes  
Permitted: Yes  
Wet space: Yes  
Addition: No  
Conversion: No

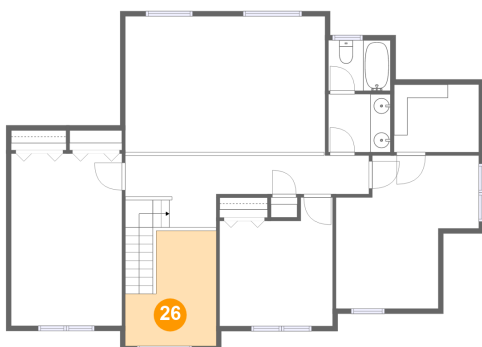
### 25 Floor 3 - Bedroom



Max Dimensions: 11'0" x 17'1"  
Calculated Area: 189 sq. ft  
Included: Yes

Heated: Yes  
Finished: Yes  
Enclosed: Yes  
Contiguous: Yes  
Permitted: Yes  
Wet space: No  
Addition: No  
Conversion: No

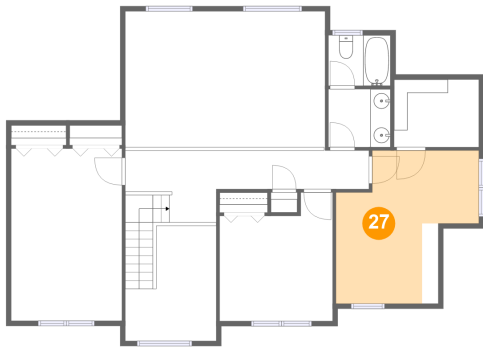
### 26 Floor 3 - Open To Below



Max Dimensions: 9'1" x 11'5"  
Calculated Area: 84 sq. ft  
Included: No

Heated: No  
Finished: No  
Enclosed: No  
Contiguous: Yes  
Permitted: No  
Wet space: No  
Addition: No  
Conversion: No

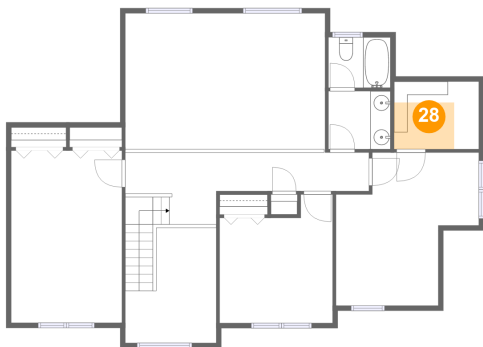
27 Floor 3 - Bedroom



Max Dimensions: 14'3" x 15'3"  
Calculated Area: 156 sq. ft  
Included: Yes

Heated: Yes  
Finished: Yes  
Enclosed: Yes  
Contiguous: Yes  
Permitted: Yes  
Wet space: No  
Addition: No  
Conversion: No

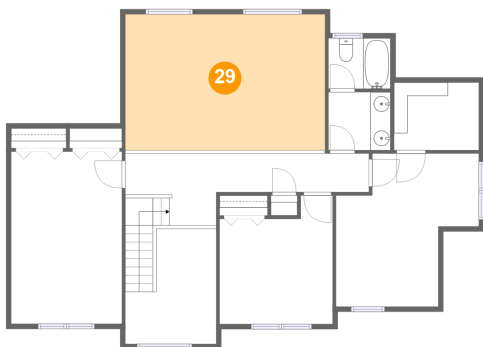
28 Floor 3 - W.I.C.



Max Dimensions: 8'5" x 6'9"  
Calculated Area: 28 sq. ft  
Included: Yes

Heated: Yes  
Finished: Yes  
Enclosed: Yes  
Contiguous: Yes  
Permitted: Yes  
Wet space: No  
Addition: No  
Conversion: No

29 Floor 3 - Open To Below



Max Dimensions: 19'11" x 13'6"  
Calculated Area: 268 sq. ft  
Included: No

Heated: No  
Finished: No  
Enclosed: No  
Contiguous: Yes  
Permitted: No  
Wet space: No  
Addition: No  
Conversion: No