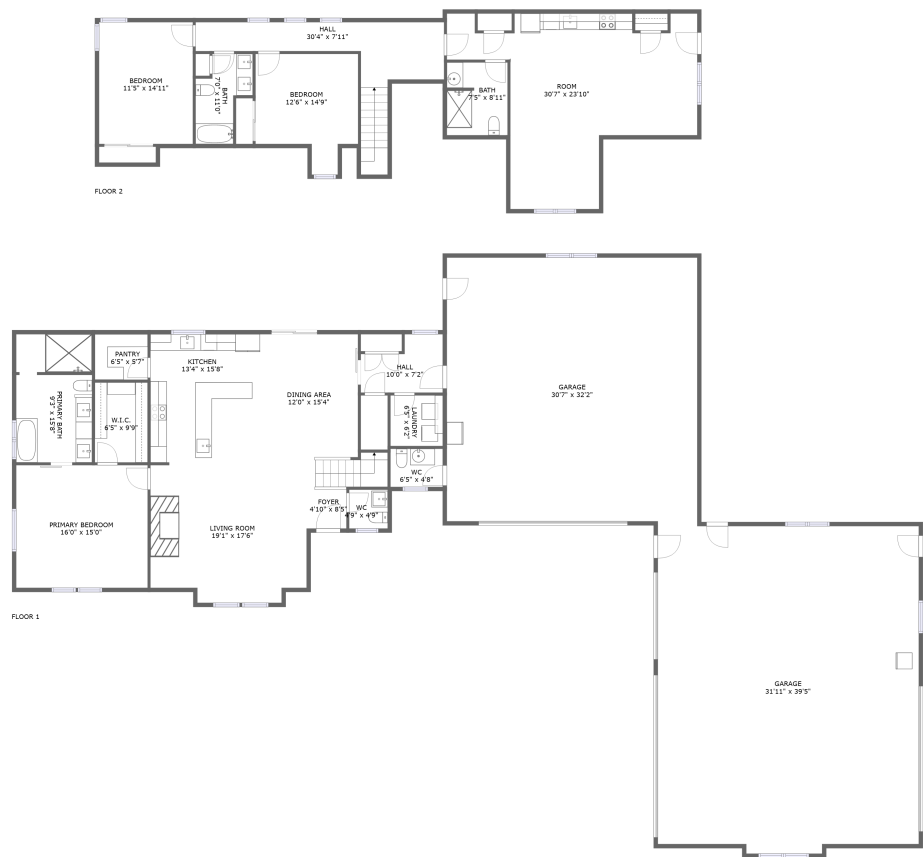




Home report


21252 Crestview Ct,Lead,SD,US




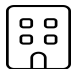
Property summary


 **2** Garages


 **3** Bedrooms

 **2** Bathrooms

 **3** Half baths

 **2** Floors

 **2,665** Gross living area sqft

 **5,209** Total sqft

Home report

21252 Crestview Ct,Lead,SD,US



Room dimensions

Floor 1 Total sqft: 3924    Living area: 1529

#		Dimensions	sqft	Counted as living area
1	Laundry	6'5" x 6'2"	40 sq. ft	Yes
2	Garage	31'11" x 39'5"	1252 sq. ft	No
3	W.I.C.	6'5" x 9'9"	63 sq. ft	Yes
4	Kitchen	13'4" x 15'8"	206 sq. ft	Yes
5	Dining Area	12'0" x 15'4"	184 sq. ft	Yes
6	WC	4'9" x 4'9"	22 sq. ft	Yes
7	Hall	10'0" x 7'2"	59 sq. ft	Yes
8	Primary Bedroom	16'0" x 15'0"	241 sq. ft	Yes
9	Garage	30'7" x 32'2"	985 sq. ft	No
10	Pantry	6'5" x 5'7"	36 sq. ft	Yes
11	Living Room	19'1" x 17'6"	316 sq. ft	Yes

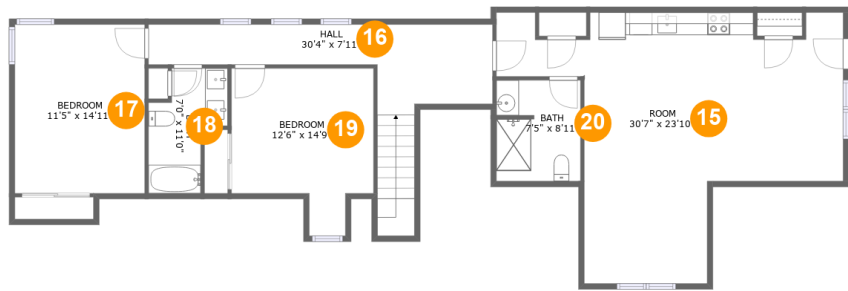
Home report

21252 Crestview Ct,Lead,SD,US

#		Dimensions	sqft	Counted as living area
12	Primary Bath	9'3" x 15'8"	143 sq. ft	Yes
13	Foyer	4'10" x 8'5"	60 sq. ft	Yes
14	WC	6'5" x 4'8"	30 sq. ft	No

Home report

21252 Crestview Ct,Lead,SD,US



Room dimensions

Floor 2 Total sqft: 1285    Living area: 1136

#		Dimensions	sqft	Counted as living area
15	Room	30'7" x 23'10"	379 sq. ft	Yes
16	Hall	30'4" x 7'11"	181 sq. ft	Yes
17	Bedroom	11'5" x 14'11"	171 sq. ft	Yes
18	Bath	7'0" x 11'0"	57 sq. ft	Yes
19	Bedroom	12'6" x 14'9"	150 sq. ft	Yes
20	Bath	7'5" x 8'11"	47 sq. ft	Yes

1 Floor 1 - Laundry



Dimensions: 6'5" x 6'2"  
Area: 40 sq. ft  
Counted as living area: Yes

Heated: Yes  
Finished: Yes  
Enclosed: Yes  
Contiguous: Yes  
Permitted: Yes  
Wet space: No  
Addition: No  
Conversion: No

2 Floor 1 - Garage



Dimensions: 31'11" x 39'5"  
Area: 1252 sq. ft  
Counted as living area: No

Heated: No  
Finished: No  
Enclosed: Yes  
Contiguous: Yes  
Permitted: Yes  
Wet space: No  
Addition: No  
Conversion: No

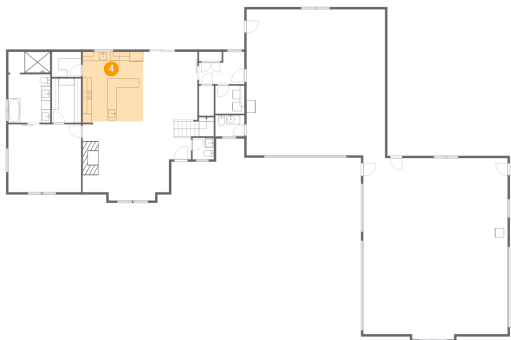
3 Floor 1 - W.I.C.



Dimensions: 6'5" x 9'9"  
Area: 63 sq. ft  
Counted as living area: Yes

Heated: Yes  
Finished: Yes  
Enclosed: Yes  
Contiguous: Yes  
Permitted: Yes  
Wet space: No  
Addition: No  
Conversion: No

4 Floor 1 - Kitchen



Dimensions: 13'4" x 15'8"  
Area: 206 sq. ft  
Counted as living area: Yes

Heated: Yes  
Finished: Yes  
Enclosed: Yes  
Contiguous: Yes  
Permitted: Yes  
Wet space: No  
Addition: No  
Conversion: No

5 Floor 1 - Dining Area



Dimensions: 12'0" x 15'4"  
Area: 184 sq. ft  
Counted as living area: Yes

Heated: Yes  
Finished: Yes  
Enclosed: Yes  
Contiguous: Yes  
Permitted: Yes  
Wet space: No  
Addition: No  
Conversion: No

6 Floor 1 - WC



Dimensions: 4'9" x 4'9"  
Area: 22 sq. ft  
Counted as living area: Yes

Heated: Yes  
Finished: Yes  
Enclosed: Yes  
Contiguous: Yes  
Permitted: Yes  
Wet space: Yes  
Addition: No  
Conversion: No

7 Floor 1 - Hall



Dimensions: 10'0" x 7'2"  
Area: 59 sq. ft  
Counted as living area: Yes

Heated: Yes  
Finished: Yes  
Enclosed: Yes  
Contiguous: Yes  
Permitted: Yes  
Wet space: No  
Addition: No  
Conversion: No

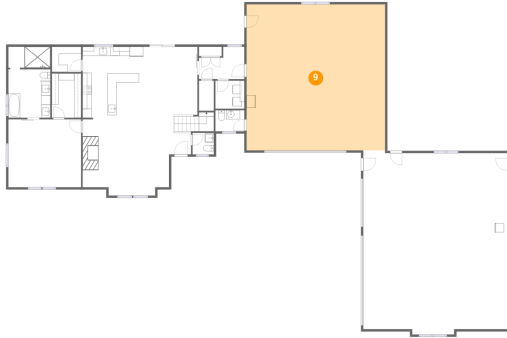
8 Floor 1 - Primary Bedroom



Dimensions: 16'0" x 15'0"  
Area: 241 sq. ft  
Counted as living area: Yes

Heated: Yes  
Finished: Yes  
Enclosed: Yes  
Contiguous: Yes  
Permitted: Yes  
Wet space: No  
Addition: No  
Conversion: No

## 9 Floor 1 - Garage



Dimensions: 30'7" x 32'2"  
Area: 985 sq. ft  
Counted as living area: No

Heated: No  
Finished: No  
Enclosed: Yes  
Contiguous: Yes  
Permitted: Yes  
Wet space: No  
Addition: No  
Conversion: No

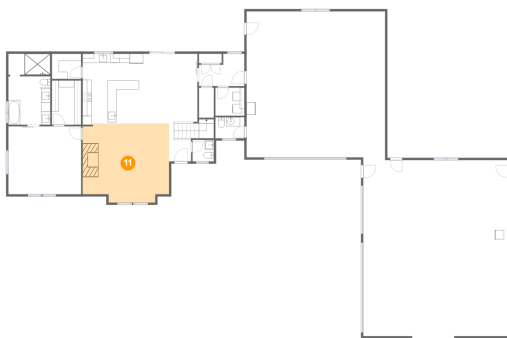
## 10 Floor 1 - Pantry



Dimensions: 6'5" x 5'7"  
Area: 36 sq. ft  
Counted as living area: Yes

Heated: Yes  
Finished: Yes  
Enclosed: Yes  
Contiguous: Yes  
Permitted: Yes  
Wet space: No  
Addition: No  
Conversion: No

## 11 Floor 1 - Living Room



Dimensions: 19'1" x 17'6"  
Area: 316 sq. ft  
Counted as living area: Yes

Heated: Yes  
Finished: Yes  
Enclosed: Yes  
Contiguous: Yes  
Permitted: Yes  
Wet space: No  
Addition: No  
Conversion: No

12 Floor 1 - Primary Bath



Dimensions: 9'3" x 15'8"  
Area: 143 sq. ft  
Counted as living area: Yes

Heated: Yes  
Finished: Yes  
Enclosed: Yes  
Contiguous: Yes  
Permitted: Yes  
Wet space: Yes  
Addition: No  
Conversion: No

13 Floor 1 - Foyer



Dimensions: 4'10" x 8'5"  
Area: 60 sq. ft  
Counted as living area: Yes

Heated: Yes  
Finished: Yes  
Enclosed: Yes  
Contiguous: Yes  
Permitted: Yes  
Wet space: No  
Addition: No  
Conversion: No

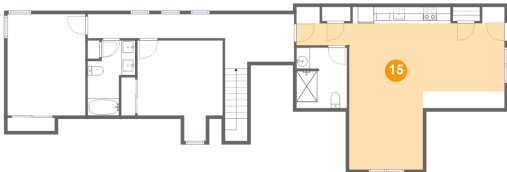
14 Floor 1 - WC



Dimensions: 6'5" x 4'8"  
Area: 30 sq. ft  
Counted as living area: No

Heated: Yes  
Finished: Yes  
Enclosed: Yes  
Contiguous: No  
Permitted: Yes  
Wet space: Yes  
Addition: No  
Conversion: No

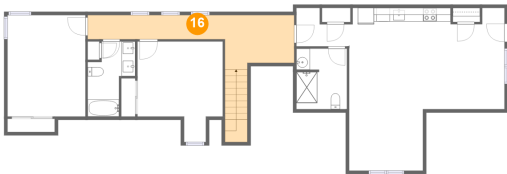
15 Floor 2 - Room



Dimensions: 30'7" x 23'10"  
Area: 379 sq. ft  
Counted as living area: Yes

Heated: Yes  
Finished: Yes  
Enclosed: Yes  
Contiguous: Yes  
Permitted: Yes  
Wet space: No  
Addition: No  
Conversion: No

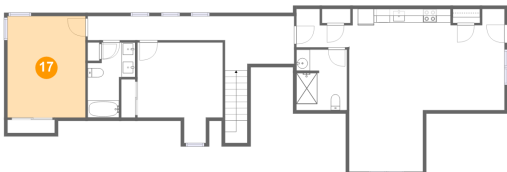
16 Floor 2 - Hall



Dimensions: 30'4" x 7'11"  
Area: 181 sq. ft  
Counted as living area: Yes

Heated: Yes  
Finished: Yes  
Enclosed: Yes  
Contiguous: Yes  
Permitted: Yes  
Wet space: No  
Addition: No  
Conversion: No

17 Floor 2 - Bedroom



Dimensions: 11'5" x 14'11"  
Area: 171 sq. ft  
Counted as living area: Yes

Heated: Yes  
Finished: Yes  
Enclosed: Yes  
Contiguous: Yes  
Permitted: Yes  
Wet space: No  
Addition: No  
Conversion: No

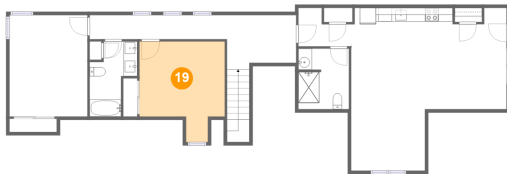
## 18 Floor 2 - Bath



Dimensions: 7'0" x 11'0"  
Area: 57 sq. ft  
Counted as living area: Yes

Heated: Yes  
Finished: Yes  
Enclosed: Yes  
Contiguous: Yes  
Permitted: Yes  
Wet space: Yes  
Addition: No  
Conversion: No

## 19 Floor 2 - Bedroom



Dimensions: 12'6" x 14'9"  
Area: 150 sq. ft  
Counted as living area: Yes

Heated: Yes  
Finished: Yes  
Enclosed: Yes  
Contiguous: Yes  
Permitted: Yes  
Wet space: No  
Addition: No  
Conversion: No

## 20 Floor 2 - Bath



Dimensions: 7'5" x 8'11"  
Area: 47 sq. ft  
Counted as living area: Yes

Heated: Yes  
Finished: Yes  
Enclosed: Yes  
Contiguous: Yes  
Permitted: Yes  
Wet space: Yes  
Addition: No  
Conversion: No