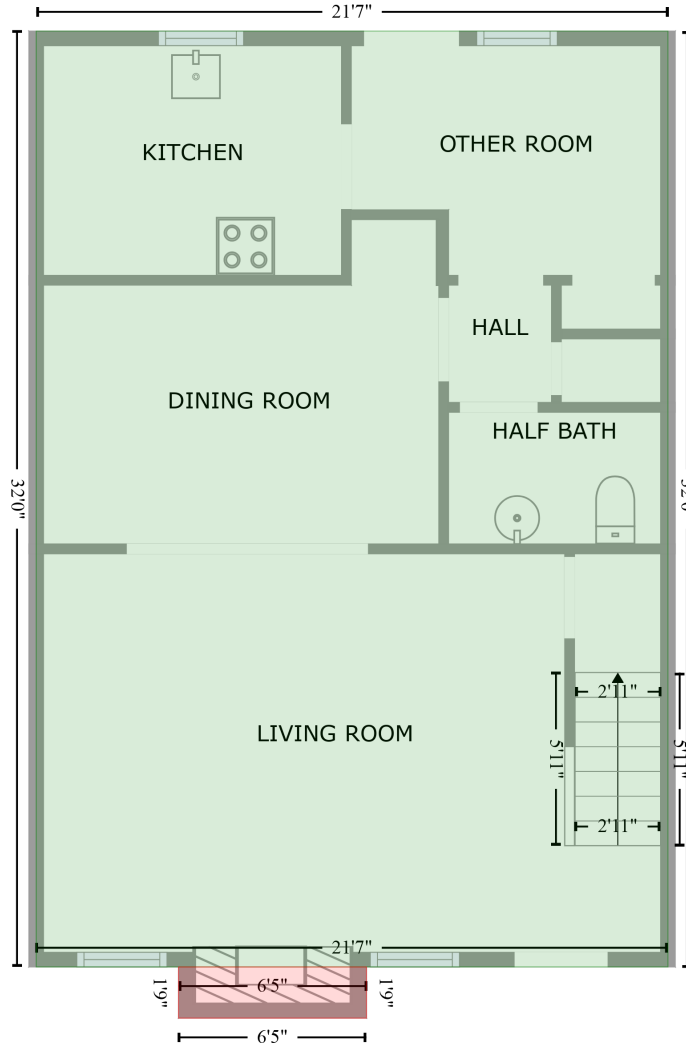


1566 Four Mile Post Rd SE, Huntsville, Alabama, United States

Gross Living Area: 1384 sq. ft

FLOOR 1
[AREA: 692]



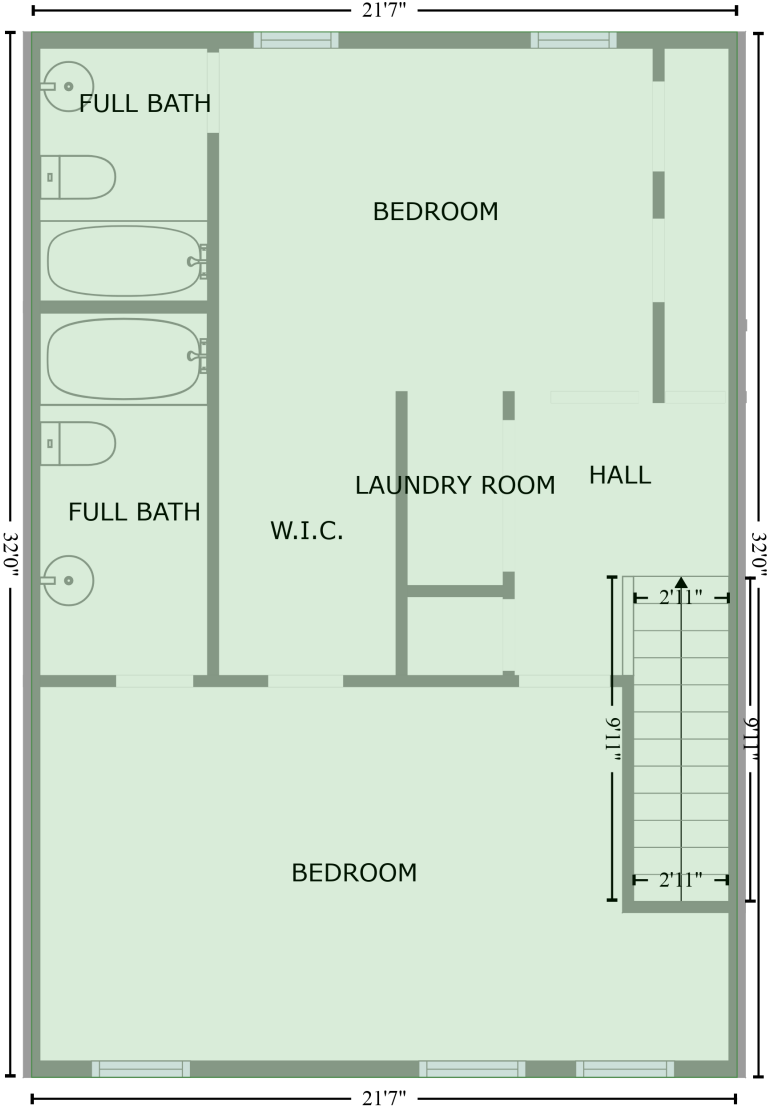
FIREPLACE (1)
[AREA: 11]

| Space | Area (sq. ft) | Calculation <small>Coordinate Polygon Area Algorithm using inches</small> |
|--------------------------------|---------------|--|
| FLOOR 1 (Living area) | 692 | $-((335.9 + 335.9) * (-84.4 - 299.8) + (335.9 + 76.6) * (299.8 - 299.8) + (76.6 + 76.6) * (299.8 - -84.4) + (76.6 + 335.9) * (-84.4 - -84.4)) * 0.5 * 0.00694$ |
| FIREPLACE (Non-living area) | 11 | $-((212.2 + 212.2) * (299.8 - 320.8) + (212.2 + 135) * (320.8 - 320.8) + (135 + 135) * (320.8 - 299.8) + (135 + 212.2) * (299.8 - 299.8)) * 0.5 * 0.00694$ |

1566 Four Mile Post Rd SE, Huntsville, Alabama, United States

Gross Living Area: 1384 sq. ft

FLOOR 2
[AREA: 692]



| Space | Area (sq. ft) | Calculation <small>Coordinate Polygon Area Algorithm using inches</small> |
|--------------------------|---------------|--|
| FLOOR 2 (Living area) | 692 | $-((321.1 + 321.1) * (6.8 - 390.9) + (321.1 + 61.7) * (390.9 - 390.9) + (61.7 + 61.7) * (390.9 - 6.8) + (61.7 + 321.1) * (6.8 - 6.8)) * 0.5 * 0.00694$ |