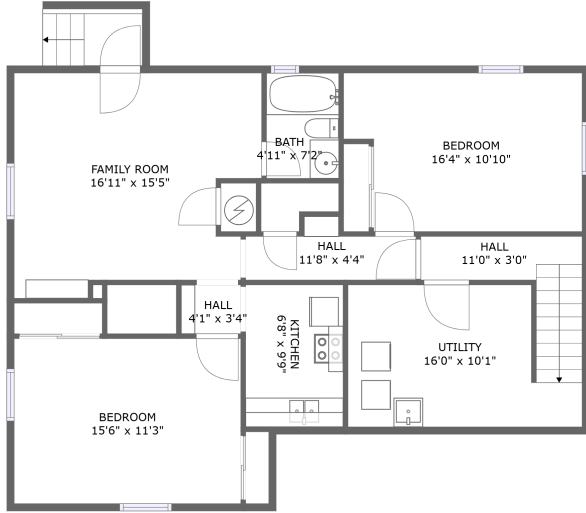
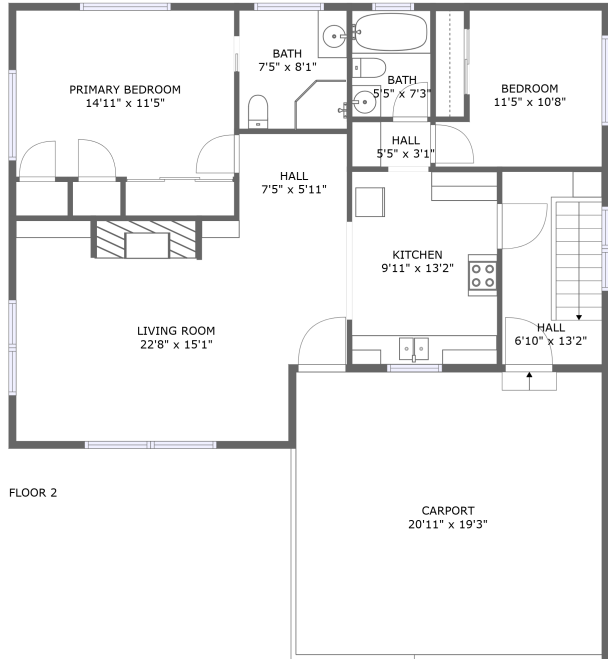


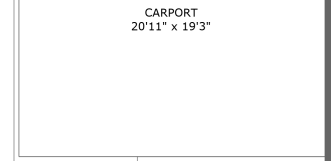
# 25 Princeton Avenue, Pocatello, Bannock County, Idaho, United States, 83201



FLOOR 1



FLOOR 2




## Property Summary

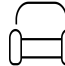
 **0** garages

 **4** bedrooms

 **3** bathrooms

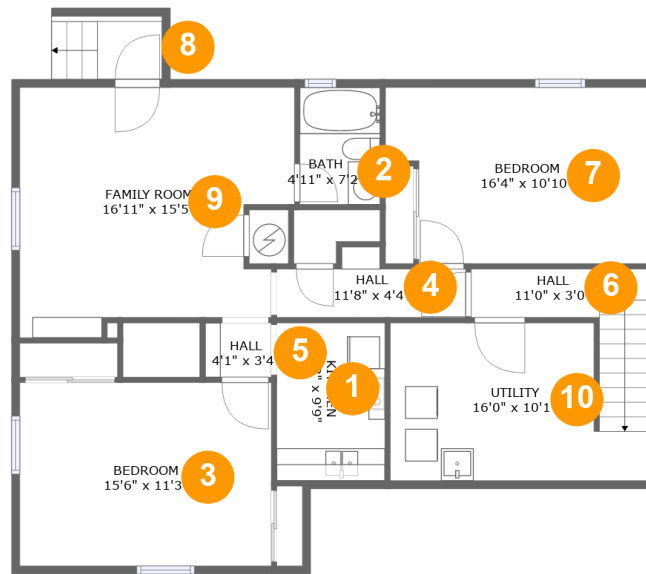
 **0** half baths

 **2** floors

 **1,465** Gross Living Area sqft

 **2,653** total sqft

# 25 Princeton Avenue, Pocatello, Bannock County, Idaho, United States, 83201



## Room Dimensions

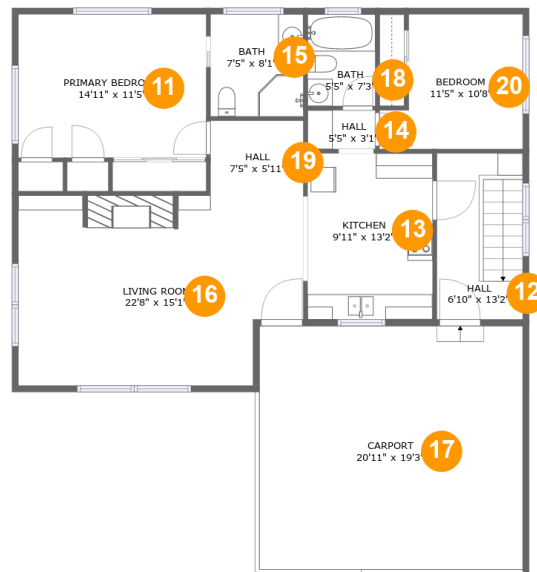
Floor 1

Total sqft: 1101

Living area: 327

#	Room name	Dimensions	Area (sqft)	Counted as Living Area
1	Kitchen	6'8" x 9'9"	65 sq. ft	No
2	Bath	4'11" x 7'2"	36 sq. ft	No
3	Bedroom	15'6" x 11'3"	175 sq. ft	No
4	Hall	11'8" x 4'4"	38 sq. ft	No
5	Hall	4'1" x 3'4"	14 sq. ft	Yes
6	Hall	11'0" x 3'0"	33 sq. ft	Yes
7	Bedroom	16'4" x 10'10"	164 sq. ft	Yes
8	Outdoor	6'10" x 3'7"	27 sq. ft	No
9	Family Room	16'11" x 15'5"	229 sq. ft	No
10	Utility	16'0" x 10'1"	154 sq. ft	No

# 25 Princeton Avenue, Pocatello, Bannock County, Idaho, United States, 83201



## Room Dimensions

Floor 2

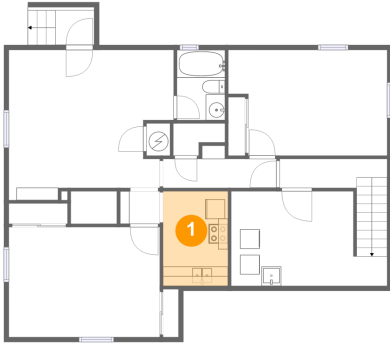
Total sqft: 1552

Living area: 1138

#	Room name	Dimensions	Area (sqft)	Counted as Living Area
11	Primary Bedroom	14'11" x 11'5"	170 sq. ft	Yes
12	Hall	6'10" x 13'2"	90 sq. ft	Yes
13	Kitchen	9'11" x 13'2"	131 sq. ft	Yes
14	Hall	5'5" x 3'1"	17 sq. ft	Yes
15	Bath	7'5" x 8'1"	60 sq. ft	Yes
16	Living Room	22'8" x 15'1"	319 sq. ft	Yes
17	Carport	20'11" x 19'3"	405 sq. ft	No
18	Bath	5'5" x 7'3"	39 sq. ft	Yes
19	Hall	7'5" x 5'11"	44 sq. ft	Yes
20	Bedroom	11'5" x 10'8"	104 sq. ft	Yes

# 25 Princeton Avenue, Pocatello, Bannock County, Idaho, United States, 83201

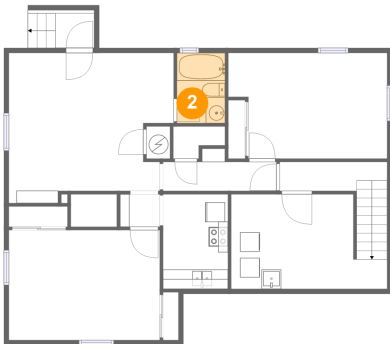
## 1 Floor 1 - Kitchen



Dimensions: 6'8" x 9'9"  
Area: 65 sq. ft  
Counted as Living Area: No

Heated: Yes  
Finished: Yes  
Enclosed: Yes  
Contiguous: Yes  
Permitted: Yes  
Wet Space: No  
Addition: No  
Conversion: No

## 2 Floor 1 - Bath

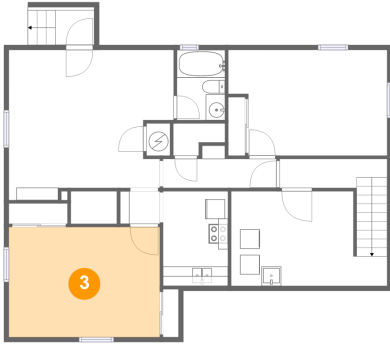


Dimensions: 4'11" x 7'2"  
Area: 36 sq. ft  
Counted as Living Area: No

Heated: Yes  
Finished: Yes  
Enclosed: Yes  
Contiguous: Yes  
Permitted: Yes  
Wet Space: Yes  
Addition: No  
Conversion: No

# 25 Princeton Avenue, Pocatello, Bannock County, Idaho, United States, 83201

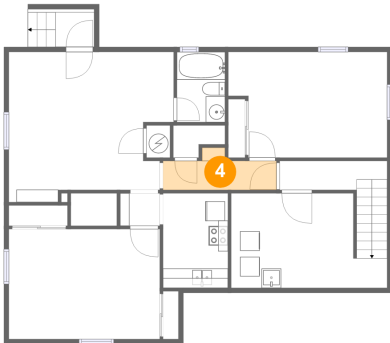
## 3 Floor 1 - Bedroom



Dimensions: 15'6" x 11'3"  
Area: 175 sq. ft  
Counted as Living Area: No

Heated: Yes  
Finished: Yes  
Enclosed: Yes  
Contiguous: Yes  
Permitted: Yes  
Wet Space: No  
Addition: No  
Conversion: No

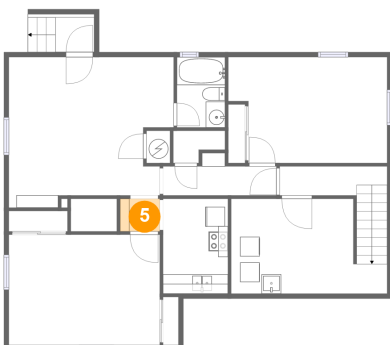
## 4 Floor 1 - Hall



Dimensions: 11'8" x 4'4"  
Area: 38 sq. ft  
Counted as Living Area: No

Heated: Yes  
Finished: Yes  
Enclosed: Yes  
Contiguous: Yes  
Permitted: Yes  
Wet Space: No  
Addition: No  
Conversion: No

## 5 Floor 1 - Hall

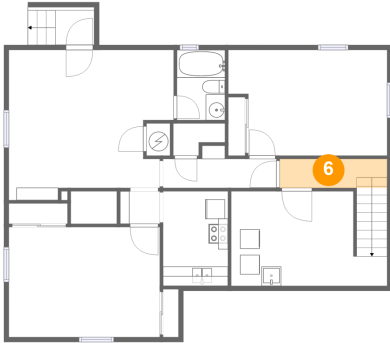


Dimensions: 4'1" x 3'4"  
Area: 14 sq. ft  
Counted as Living Area: Yes

Heated: Yes  
Finished: Yes  
Enclosed: Yes  
Contiguous: Yes  
Permitted: Yes  
Wet Space: No  
Addition: No  
Conversion: No

# 25 Princeton Avenue, Pocatello, Bannock County, Idaho, United States, 83201

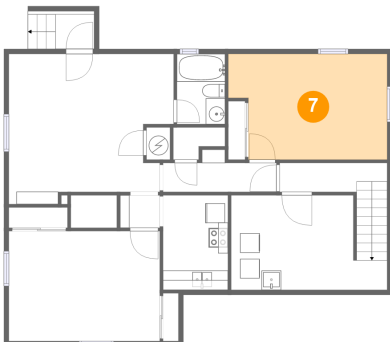
## 6 Floor 1 - Hall



Dimensions: 11'0" x 3'0"  
Area: 33 sq. ft  
Counted as Living Area:  
Yes

Heated: Yes  
Finished: Yes  
Enclosed: Yes  
Contiguous:  
Yes  
Permitted: Yes  
Wet Space: No  
Addition: No  
Conversion: No

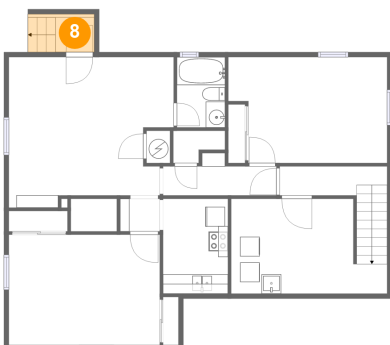
## 7 Floor 1 - Bedroom



Dimensions: 16'4" x 10'10"  
Area: 164 sq. ft  
Counted as Living Area:  
Yes

Heated: Yes  
Finished: Yes  
Enclosed: Yes  
Contiguous:  
Yes  
Permitted: Yes  
Wet Space: No  
Addition: No  
Conversion: No

## 8 Floor 1 - Outdoor

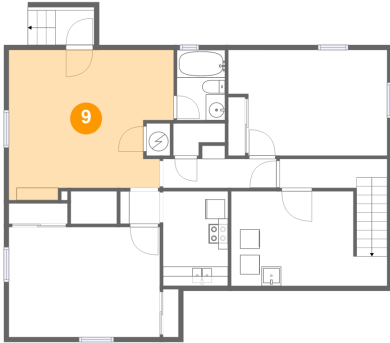


Dimensions: 6'10" x 3'7"  
Area: 27 sq. ft  
Counted as Living Area: No

Heated: No  
Finished: No  
Enclosed: No  
Contiguous: Yes  
Permitted: No  
Wet Space: No  
Addition: No  
Conversion: No

## 25 Princeton Avenue, Pocatello, Bannock County, Idaho, United States, 83201

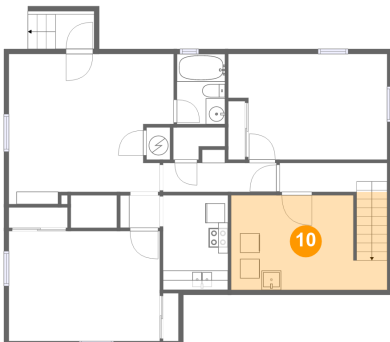
### 9 Floor 1 - Family Room



Dimensions: 16'11" x 15'5"  
Area: 229 sq. ft  
Counted as Living Area: No

Heated: Yes  
Finished: Yes  
Enclosed: Yes  
Contiguous: Yes  
Permitted: Yes  
Wet Space: No  
Addition: No  
Conversion: No

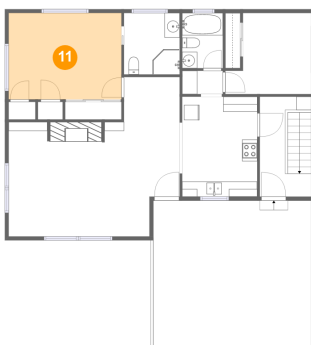
### 10 Floor 1 - Utility



Dimensions: 16'0" x 10'1"  
Area: 154 sq. ft  
Counted as Living Area: No

Heated: Yes  
Finished: No  
Enclosed: Yes  
Contiguous: Yes  
Permitted: Yes  
Wet Space: No  
Addition: No  
Conversion: No

### 11 Floor 2 - Primary Bedroom

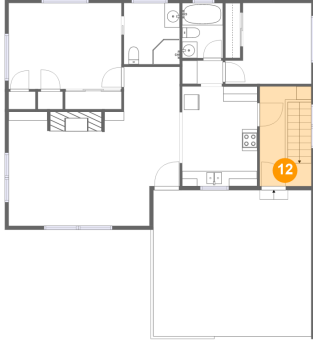


Dimensions: 14'11" x 11'5"  
Area: 170 sq. ft  
Counted as Living Area: Yes

Heated: Yes  
Finished: Yes  
Enclosed: Yes  
Contiguous: Yes  
Permitted: Yes  
Wet Space: No  
Addition: No  
Conversion: No

# 25 Princeton Avenue, Pocatello, Bannock County, Idaho, United States, 83201

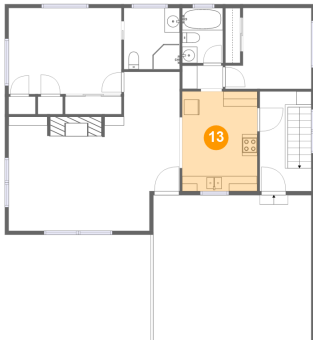
## 12 Floor 2 - Hall



Dimensions: 6'10" x 13'2"  
Area: 90 sq. ft  
Counted as Living Area:  
Yes

Heated: Yes  
Finished: Yes  
Enclosed: Yes  
Contiguous:  
Yes  
Permitted: Yes  
Wet Space: No  
Addition: No  
Conversion: No

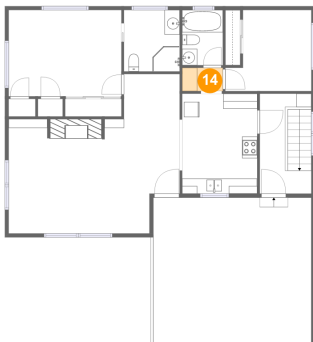
## 13 Floor 2 - Kitchen



Dimensions: 9'11" x 13'2"  
Area: 131 sq. ft  
Counted as Living Area:  
Yes

Heated: Yes  
Finished: Yes  
Enclosed: Yes  
Contiguous:  
Yes  
Permitted: Yes  
Wet Space: No  
Addition: No  
Conversion: No

## 14 Floor 2 - Hall



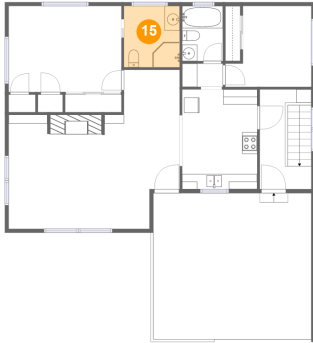
Dimensions: 5'5" x 3'1"  
Area: 17 sq. ft  
Counted as Living Area:  
Yes

Heated: Yes  
Finished: Yes  
Enclosed: Yes  
Contiguous:  
Yes  
Permitted: Yes  
Wet Space: No  
Addition: No  
Conversion: No



# 25 Princeton Avenue, Pocatello, Bannock County, Idaho, United States, 83201

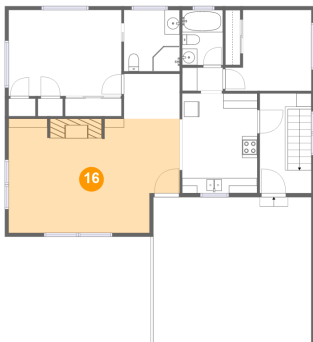
## 15 Floor 2 - Bath



Dimensions: 7'5" x 8'1"  
Area: 60 sq. ft  
Counted as Living Area:  
Yes

Heated: Yes  
Finished: Yes  
Enclosed: Yes  
Contiguous:  
Yes  
Permitted: Yes  
Wet Space: Yes  
Addition: No  
Conversion: No

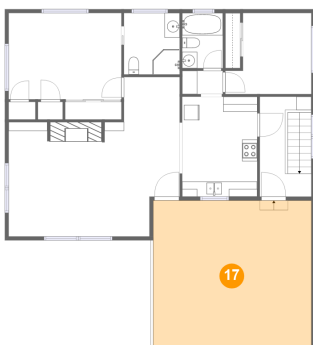
## 16 Floor 2 - Living Room



Dimensions: 22'8" x 15'1"  
Area: 319 sq. ft  
Counted as Living Area:  
Yes

Heated: Yes  
Finished: Yes  
Enclosed: Yes  
Contiguous:  
Yes  
Permitted: Yes  
Wet Space: No  
Addition: No  
Conversion: No

## 17 Floor 2 - Carport

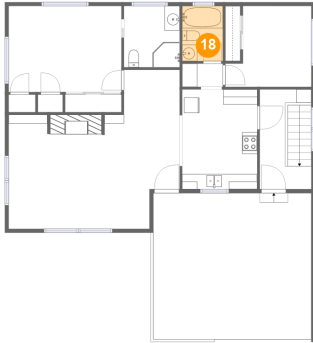


Dimensions: 20'11" x 19'3"  
Area: 405 sq. ft  
Counted as Living Area: No

Heated: No  
Finished: Yes  
Enclosed: No  
Contiguous: Yes  
Permitted: Yes  
Wet Space: No  
Addition: No  
Conversion: No

# 25 Princeton Avenue, Pocatello, Bannock County, Idaho, United States, 83201

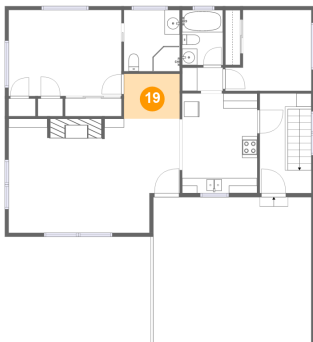
## 18 Floor 2 - Bath



Dimensions: 5'5" x 7'3"  
Area: 39 sq. ft  
Counted as Living Area:  
Yes

Heated: Yes  
Finished: Yes  
Enclosed: Yes  
Contiguous:  
Yes  
Permitted: Yes  
Wet Space: Yes  
Addition: No  
Conversion: No

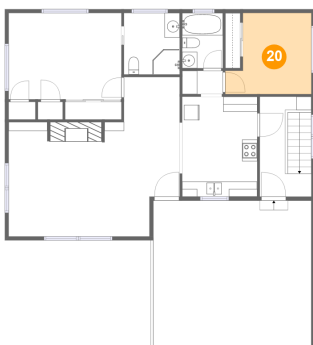
## 19 Floor 2 - Hall



Dimensions: 7'5" x 5'11"  
Area: 44 sq. ft  
Counted as Living Area:  
Yes

Heated: Yes  
Finished: Yes  
Enclosed: Yes  
Contiguous:  
Yes  
Permitted: Yes  
Wet Space: No  
Addition: No  
Conversion: No

## 20 Floor 2 - Bedroom



Dimensions: 11'5" x 10'8"  
Area: 104 sq. ft  
Counted as Living Area:  
Yes

Heated: Yes  
Finished: Yes  
Enclosed: Yes  
Contiguous:  
Yes  
Permitted: Yes  
Wet Space: No  
Addition: No  
Conversion: No