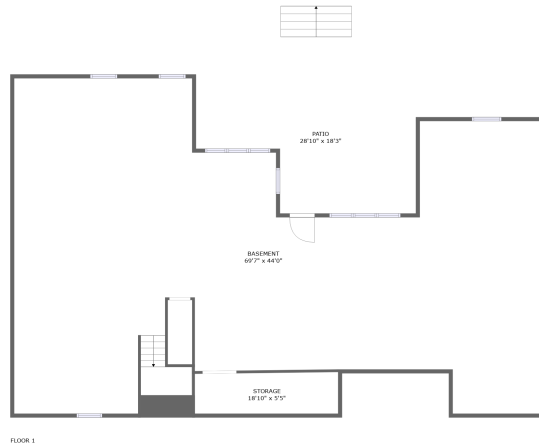
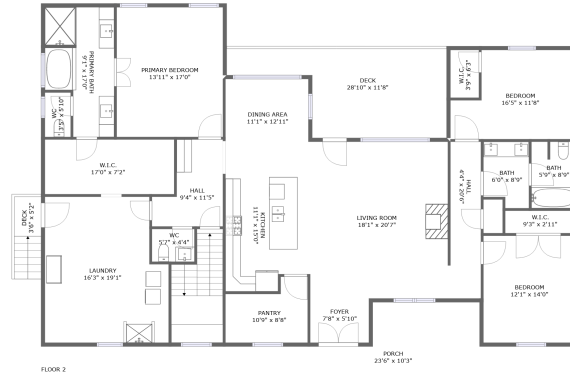


8380 Willett Lane, Roanoke, Roanoke County, Virginia, United States, 24059




Property Summary

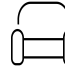
 **0** garages

 **3** bedrooms

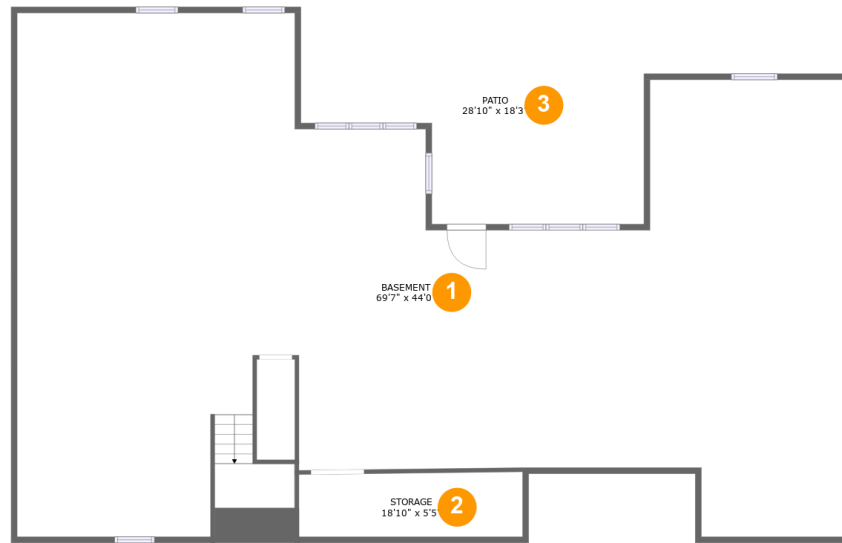
 **2** bathrooms

 **1** half baths

 **2** floors

 **2,584** Gross Living Area sqft

 **6,076** total sqft

**8380 Willett Lane, Roanoke, Roanoke County,
Virginia, United States, 24059****Room Dimensions****Floor 1****Total sqft: 3001****Living area: 0**

#	Room name	Dimensions	Area (sqft)	Counted as Living Area
1	Basement	69'7" x 44'0"	2270 sq. ft	No
2	Storage	18'10" x 5'5"	101 sq. ft	No
3	Patio	28'10" x 18'3"	433 sq. ft	No

8380 Willett Lane, Roanoke, Roanoke County, Virginia, United States, 24059



Room Dimensions

Floor 2

Total sqft: 3075

Living area: 2584

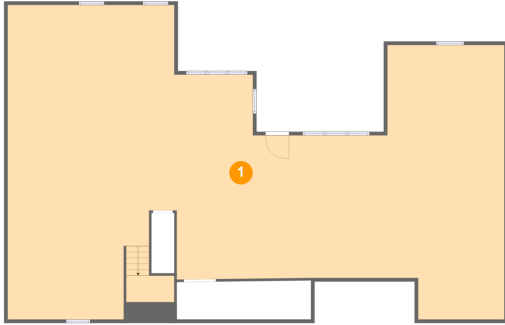
#	Room name	Dimensions	Area (sqft)	Counted as Living Area
4	Hall	9'4" x 11'5"	82 sq. ft	Yes
5	Hall	4'4" x 20'6"	84 sq. ft	Yes
6	Pantry	10'9" x 8'8"	77 sq. ft	Yes
7	Foyer	7'8" x 5'10"	45 sq. ft	Yes
8	Wc	5'7" x 4'4"	24 sq. ft	Yes
9	Laundry	16'3" x 19'1"	289 sq. ft	Yes
10	Bath	5'9" x 8'9"	50 sq. ft	Yes
11	Deck	3'6" x 5'2"	18 sq. ft	No
12	Primary Bedroom	13'11" x 17'0"	237 sq. ft	Yes
13	W.i.c.	17'0" x 7'2"	122 sq. ft	Yes
14	Bath	6'0" x 8'9"	48 sq. ft	Yes

**8380 Willett Lane, Roanoke, Roanoke County,
Virginia, United States, 24059**

#	Room name	Dimensions	Area (sqft)	Counted as Living Area
15	Living Room	18'1" x 20'7"	372 sq. ft	Yes
16	Dining Area	11'1" x 12'11"	142 sq. ft	Yes
17	Bedroom	16'5" x 11'8"	165 sq. ft	Yes
18	W.i.c.	3'9" x 6'3"	23 sq. ft	Yes
19	Porch	23'6" x 10'3"	228 sq. ft	No
20	Bedroom	12'1" x 14'0"	169 sq. ft	Yes
21	Wc	3'5" x 5'10"	20 sq. ft	Yes
22	W.i.c.	9'3" x 2'11"	27 sq. ft	Yes
23	Kitchen	11'1" x 15'0"	157 sq. ft	Yes
24	Deck	28'10" x 11'8"	245 sq. ft	No
25	Primary Bath	9'1" x 17'0"	130 sq. ft	Yes

8380 Willett Lane, Roanoke, Roanoke County, Virginia, United States, 24059

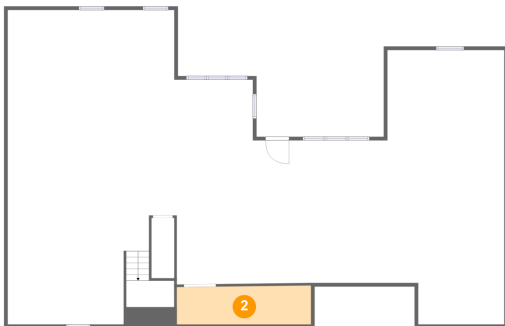
1 Floor 1 - Basement



Dimensions: 69'7" x 44'0"
Area: 2270 sq. ft
Counted as Living Area: No

Heated: Yes
Finished: No
Enclosed: Yes
Contiguous: Yes
Permitted: Yes
Wet Space: No
Addition: No
Conversion: No

2 Floor 1 - Storage

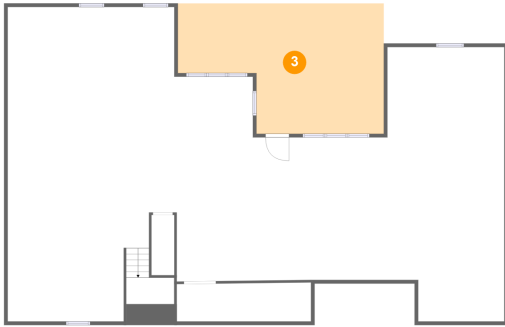


Dimensions: 18'10" x 5'5"
Area: 101 sq. ft
Counted as Living Area: No

Heated: No
Finished: No
Enclosed: No
Contiguous: Yes
Permitted: Yes
Wet Space: No
Addition: No
Conversion: No

8380 Willett Lane, Roanoke, Roanoke County, Virginia, United States, 24059

3 Floor 1 - Patio



Dimensions: 28'10" x 18'3"
Area: 433 sq. ft
Counted as Living Area: No

Heated: No
Finished: Yes
Enclosed: No
Contiguous: Yes
Permitted: Yes
Wet Space: No
Addition: No
Conversion: No

4 Floor 2 - Hall



Dimensions: 9'4" x 11'5"
Area: 82 sq. ft
Counted as Living Area: Yes

Heated: Yes
Finished: Yes
Enclosed: Yes
Contiguous: Yes
Permitted: Yes
Wet Space: No
Addition: No
Conversion: No

5 Floor 2 - Hall



Dimensions: 4'4" x 20'6"
Area: 84 sq. ft
Counted as Living Area: Yes

Heated: Yes
Finished: Yes
Enclosed: Yes
Contiguous: Yes
Permitted: Yes
Wet Space: No
Addition: No
Conversion: No

**8380 Willett Lane, Roanoke, Roanoke County,
Virginia, United States, 24059**

6 Floor 2 - Pantry



Dimensions: 10'9" x 8'8"
Area: 77 sq. ft
Counted as Living Area:
Yes

Heated: Yes
Finished: Yes
Enclosed: Yes
Contiguous:
Yes
Permitted: Yes
Wet Space: No
Addition: No
Conversion: No

7 Floor 2 - Foyer



Dimensions: 7'8" x 5'10"
Area: 45 sq. ft
Counted as Living Area:
Yes

Heated: Yes
Finished: Yes
Enclosed: Yes
Contiguous:
Yes
Permitted: Yes
Wet Space: No
Addition: No
Conversion: No

8 Floor 2 - Wc

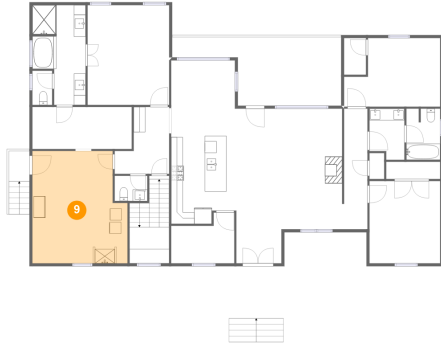


Dimensions: 5'7" x 4'4"
Area: 24 sq. ft
Counted as Living Area:
Yes

Heated: Yes
Finished: Yes
Enclosed: Yes
Contiguous:
Yes
Permitted: Yes
Wet Space: Yes
Addition: No
Conversion: No

8380 Willett Lane, Roanoke, Roanoke County, Virginia, United States, 24059

9 Floor 2 - Laundry



Dimensions: 16'3" x 19'1"
Area: 289 sq. ft
Counted as Living Area:
Yes

Heated: Yes
Finished: Yes
Enclosed: Yes
Contiguous:
Yes
Permitted: Yes
Wet Space: No
Addition: No
Conversion: No

10 Floor 2 - Bath



Dimensions: 5'9" x 8'9"
Area: 50 sq. ft
Counted as Living Area:
Yes

Heated: Yes
Finished: Yes
Enclosed: Yes
Contiguous:
Yes
Permitted: Yes
Wet Space: Yes
Addition: No
Conversion: No

11 Floor 2 - Deck

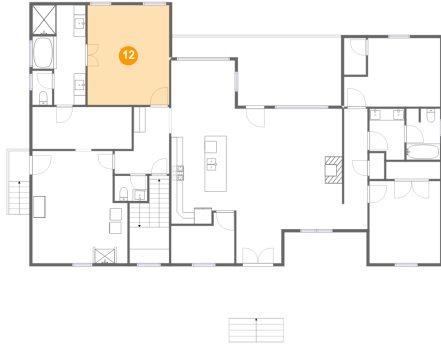


Dimensions: 3'6" x 5'2"
Area: 18 sq. ft
Counted as Living Area: No

Heated: No
Finished: Yes
Enclosed: No
Contiguous: Yes
Permitted: Yes
Wet Space: No
Addition: No
Conversion: No

**8380 Willett Lane, Roanoke, Roanoke County,
Virginia, United States, 24059**

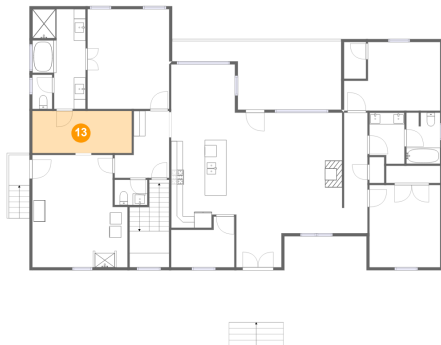
12 Floor 2 - Primary Bedroom



Dimensions: 13'11" x 17'0"
Area: 237 sq. ft
Counted as Living Area:
Yes

Heated: Yes
Finished: Yes
Enclosed: Yes
Contiguous:
Yes
Permitted: Yes
Wet Space: No
Addition: No
Conversion: No

13 Floor 2 - W.i.c.



Dimensions: 17'0" x 7'2"
Area: 122 sq. ft
Counted as Living Area:
Yes

Heated: Yes
Finished: Yes
Enclosed: Yes
Contiguous:
Yes
Permitted: Yes
Wet Space: No
Addition: No
Conversion: No

14 Floor 2 - Bath

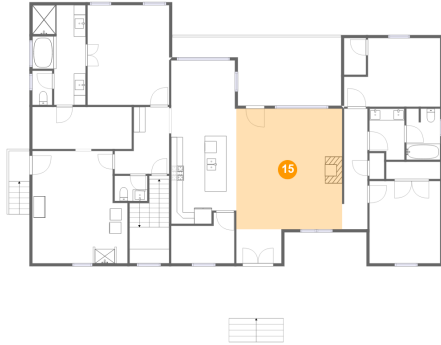


Dimensions: 6'0" x 8'9"
Area: 48 sq. ft
Counted as Living Area:
Yes

Heated: Yes
Finished: Yes
Enclosed: Yes
Contiguous:
Yes
Permitted: Yes
Wet Space: Yes
Addition: No
Conversion: No

8380 Willett Lane, Roanoke, Roanoke County, Virginia, United States, 24059

15 Floor 2 - Living Room



Dimensions: 18'1" x 20'7"
Area: 372 sq. ft
Counted as Living Area:
Yes

Heated: Yes
Finished: Yes
Enclosed: Yes
Contiguous:
Yes
Permitted: Yes
Wet Space: No
Addition: No
Conversion: No

16 Floor 2 - Dining Area



Dimensions: 11'1" x 12'11"
Area: 142 sq. ft
Counted as Living Area:
Yes

Heated: Yes
Finished: Yes
Enclosed: Yes
Contiguous:
Yes
Permitted: Yes
Wet Space: No
Addition: No
Conversion: No

17 Floor 2 - Bedroom



Dimensions: 16'5" x 11'8"
Area: 165 sq. ft
Counted as Living Area:
Yes

Heated: Yes
Finished: Yes
Enclosed: Yes
Contiguous:
Yes
Permitted: Yes
Wet Space: No
Addition: No
Conversion: No

**8380 Willett Lane, Roanoke, Roanoke County,
Virginia, United States, 24059**

18 Floor 2 - W.i.c.



Dimensions: 3'9" x 6'3"
Area: 23 sq. ft
Counted as Living Area:
Yes

Heated: Yes
Finished: Yes
Enclosed: Yes
Contiguous:
Yes
Permitted: Yes
Wet Space: No
Addition: No
Conversion: No

19 Floor 2 - Porch



Dimensions: 23'6" x 10'3"
Area: 228 sq. ft
Counted as Living Area: No

Heated: No
Finished: Yes
Enclosed: No
Contiguous: Yes
Permitted: Yes
Wet Space: No
Addition: No
Conversion: No

20 Floor 2 - Bedroom



Dimensions: 12'1" x 14'0"
Area: 169 sq. ft
Counted as Living Area:
Yes

Heated: Yes
Finished: Yes
Enclosed: Yes
Contiguous:
Yes
Permitted: Yes
Wet Space: No
Addition: No
Conversion: No

**8380 Willett Lane, Roanoke, Roanoke County,
Virginia, United States, 24059**

21 Floor 2 - Wc



Dimensions: 3'5" x 5'10"
Area: 20 sq. ft
Counted as Living Area:
Yes

Heated: Yes
Finished: Yes
Enclosed: Yes
Contiguous:
Yes
Permitted: Yes
Wet Space: Yes
Addition: No
Conversion: No

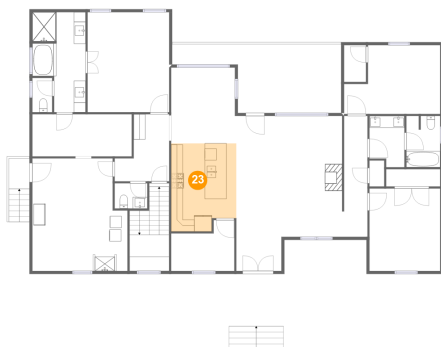
22 Floor 2 - W.i.c.



Dimensions: 9'3" x 2'11"
Area: 27 sq. ft
Counted as Living Area:
Yes

Heated: Yes
Finished: Yes
Enclosed: Yes
Contiguous:
Yes
Permitted: Yes
Wet Space: No
Addition: No
Conversion: No

23 Floor 2 - Kitchen



Dimensions: 11'1" x 15'0"
Area: 157 sq. ft
Counted as Living Area:
Yes

Heated: Yes
Finished: Yes
Enclosed: Yes
Contiguous:
Yes
Permitted: Yes
Wet Space: No
Addition: No
Conversion: No

**8380 Willett Lane, Roanoke, Roanoke County,
Virginia, United States, 24059**

24 Floor 2 - Deck



Dimensions: 28'10" x 11'8"
Area: 245 sq. ft
Counted as Living Area: No

Heated: No
Finished: Yes
Enclosed: No
Contiguous: Yes
Permitted: Yes
Wet Space: No
Addition: No
Conversion: No

25 Floor 2 - Primary Bath



Dimensions: 9'1" x 17'0"
Area: 130 sq. ft
Counted as Living Area:
Yes

Heated: Yes
Finished: Yes
Enclosed: Yes
Contiguous:
Yes
Permitted: Yes
Wet Space: Yes
Addition: No
Conversion: No