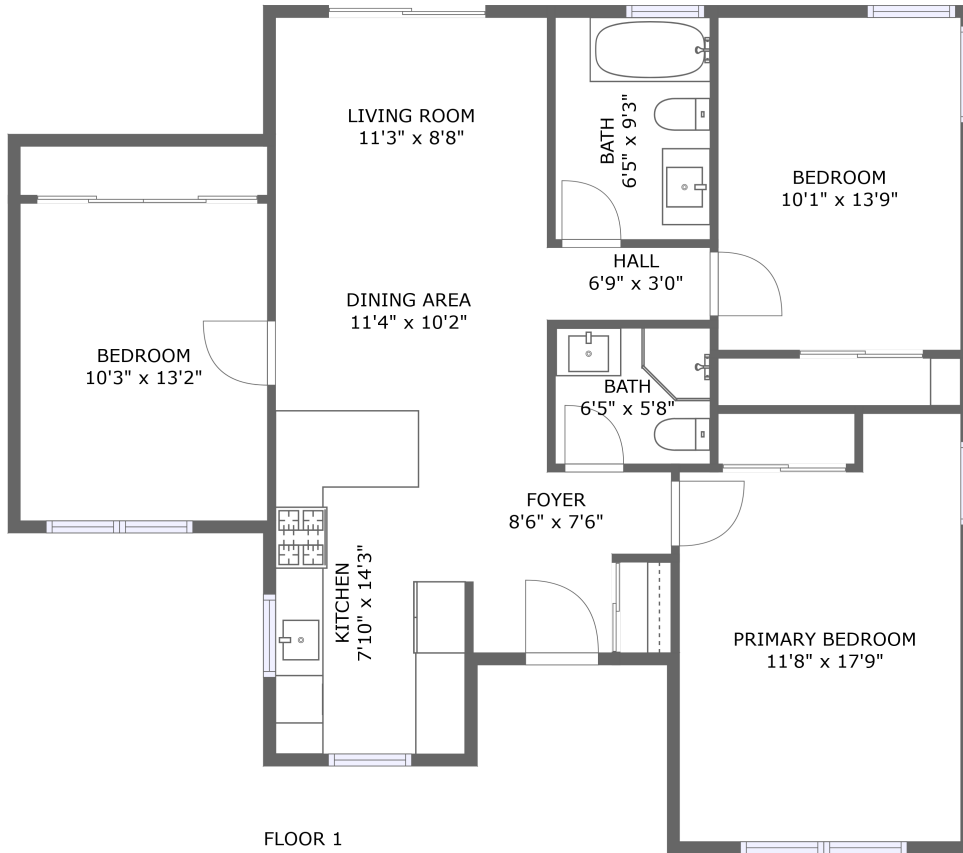


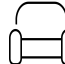
# 2291 Hickory Drive, North Concord, Concord, Contra Costa County, California, United States,



## Property Summary

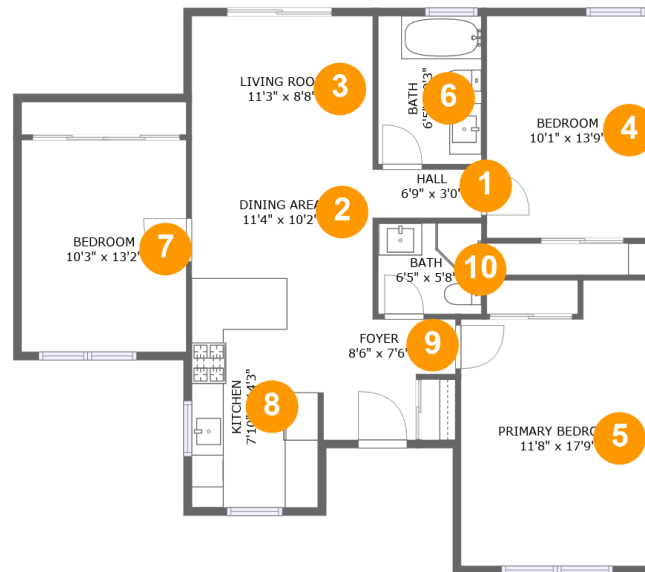
 **0** garages     **3** bedrooms     **2** bathrooms     **0** half baths

 **1** floors

 **1,118** Gross Living Area sqft

 **1,118** total sqft

## 2291 Hickory Drive, North Concord, Concord, Contra Costa County, California, United States,



### Room Dimensions

Floor 1

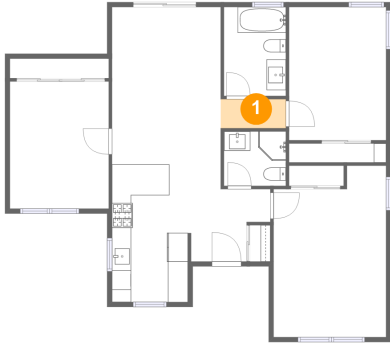
Total sqft: 1118

Living area: 1118

| #  | Room name       | Dimensions    | Area (sqft) | Counted as Living Area |
|----|-----------------|---------------|-------------|------------------------|
| 1  | Hall            | 6'9" x 3'0"   | 20 sq. ft   | Yes                    |
| 2  | Dining Area     | 11'4" x 10'2" | 95 sq. ft   | Yes                    |
| 3  | Living Room     | 11'3" x 8'8"  | 98 sq. ft   | Yes                    |
| 4  | Bedroom         | 10'1" x 13'9" | 139 sq. ft  | Yes                    |
| 5  | Primary Bedroom | 11'8" x 17'9" | 189 sq. ft  | Yes                    |
| 6  | Bath            | 6'5" x 9'3"   | 59 sq. ft   | Yes                    |
| 7  | Bedroom         | 10'3" x 13'2" | 135 sq. ft  | Yes                    |
| 8  | Kitchen         | 7'10" x 14'3" | 112 sq. ft  | Yes                    |
| 9  | Foyer           | 8'6" x 7'6"   | 53 sq. ft   | Yes                    |
| 10 | Bath            | 6'5" x 5'8"   | 36 sq. ft   | Yes                    |

# 2291 Hickory Drive, North Concord, Concord, Contra Costa County, California, United States,

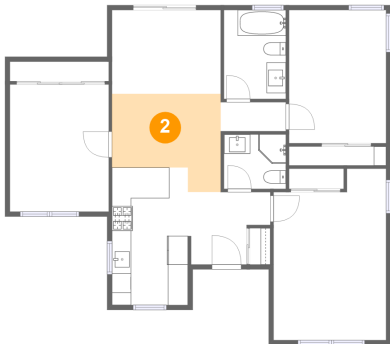
## 1 Floor 1 - Hall



Dimensions: 6'9" x 3'0"  
Area: 20 sq. ft  
Counted as Living Area:  
Yes

Heated: Yes  
Finished: Yes  
Enclosed: Yes  
Contiguous:  
Yes  
Permitted: Yes  
Wet Space: No  
Addition: No  
Conversion: No

## 2 Floor 1 - Dining Area

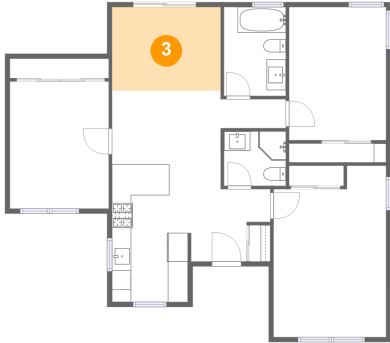


Dimensions: 11'4" x 10'2"  
Area: 95 sq. ft  
Counted as Living Area:  
Yes

Heated: Yes  
Finished: Yes  
Enclosed: Yes  
Contiguous:  
Yes  
Permitted: Yes  
Wet Space: No  
Addition: No  
Conversion: No

# 2291 Hickory Drive, North Concord, Concord, Contra Costa County, California, United States,

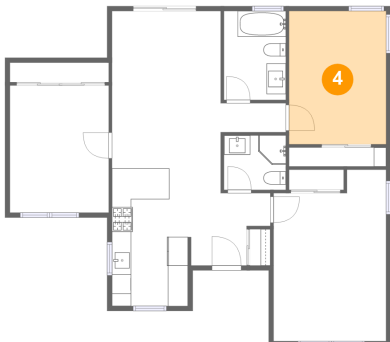
## 3 Floor 1 - Living Room



Dimensions: 11'3" x 8'8"  
Area: 98 sq. ft  
Counted as Living Area:  
Yes

Heated: Yes  
Finished: Yes  
Enclosed: Yes  
Contiguous:  
Yes  
Permitted: Yes  
Wet Space: No  
Addition: No  
Conversion: No

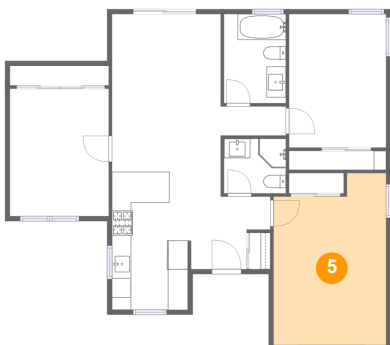
## 4 Floor 1 - Bedroom



Dimensions: 10'1" x 13'9"  
Area: 139 sq. ft  
Counted as Living Area:  
Yes

Heated: Yes  
Finished: Yes  
Enclosed: Yes  
Contiguous:  
Yes  
Permitted: Yes  
Wet Space: No  
Addition: No  
Conversion: No

## 5 Floor 1 - Primary Bedroom

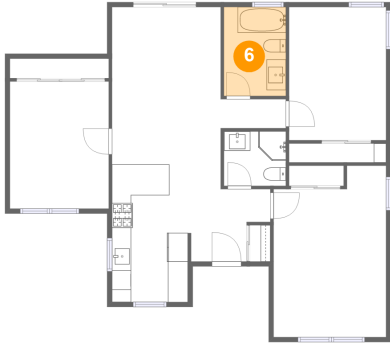


Dimensions: 11'8" x 17'9"  
Area: 189 sq. ft  
Counted as Living Area:  
Yes

Heated: Yes  
Finished: Yes  
Enclosed: Yes  
Contiguous:  
Yes  
Permitted: Yes  
Wet Space: No  
Addition: No  
Conversion: No

# 2291 Hickory Drive, North Concord, Concord, Contra Costa County, California, United States,

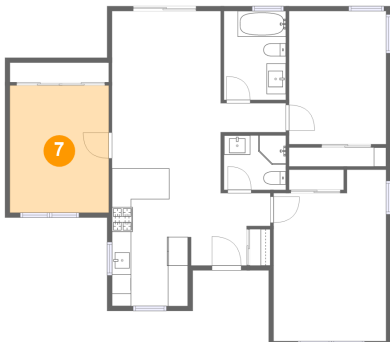
## 6 Floor 1 - Bath



Dimensions: 6'5" x 9'3"  
Area: 59 sq. ft  
Counted as Living Area:  
Yes

Heated: Yes  
Finished: Yes  
Enclosed: Yes  
Contiguous:  
Yes  
Permitted: Yes  
Wet Space: Yes  
Addition: No  
Conversion: No

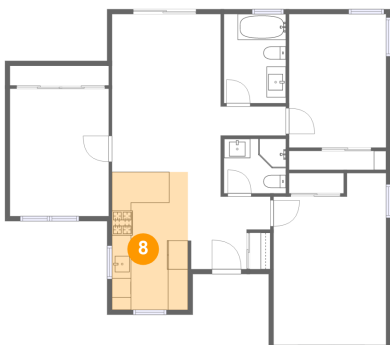
## 7 Floor 1 - Bedroom



Dimensions: 10'3" x 13'2"  
Area: 135 sq. ft  
Counted as Living Area:  
Yes

Heated: Yes  
Finished: Yes  
Enclosed: Yes  
Contiguous:  
Yes  
Permitted: Yes  
Wet Space: No  
Addition: No  
Conversion: No

## 8 Floor 1 - Kitchen

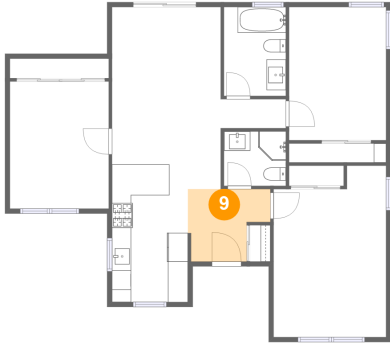


Dimensions: 7'10" x 14'3"  
Area: 112 sq. ft  
Counted as Living Area:  
Yes

Heated: Yes  
Finished: Yes  
Enclosed: Yes  
Contiguous:  
Yes  
Permitted: Yes  
Wet Space: No  
Addition: No  
Conversion: No

# 2291 Hickory Drive, North Concord, Concord, Contra Costa County, California, United States,

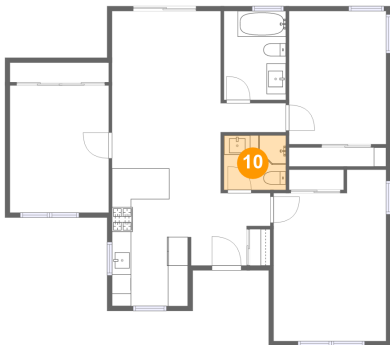
## 9 Floor 1 - Foyer



Dimensions: 8'6" x 7'6"  
Area: 53 sq. ft  
Counted as Living Area:  
Yes

Heated: Yes  
Finished: Yes  
Enclosed: Yes  
Contiguous:  
Yes  
Permitted: Yes  
Wet Space: No  
Addition: No  
Conversion: No

## 10 Floor 1 - Bath



Dimensions: 6'5" x 5'8"  
Area: 36 sq. ft  
Counted as Living Area:  
Yes

Heated: Yes  
Finished: Yes  
Enclosed: Yes  
Contiguous:  
Yes  
Permitted: Yes  
Wet Space: Yes  
Addition: No  
Conversion: No