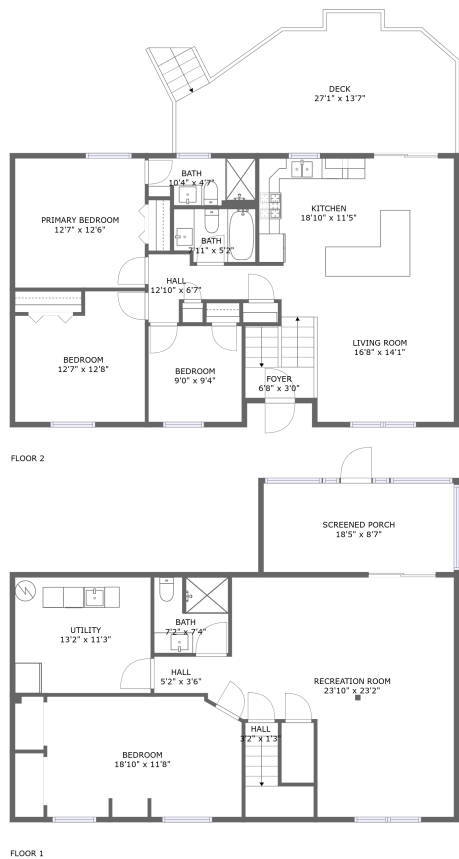


Home report

106 Mason Farm Drive, Middleway, Kearneysville, Jefferson County, West Virginia, United States, 25430



Total Area: 2055 sq. ft

Floor 1: 987 sq. ft, Floor 2: 1068 sq. ft

Excluded: Outdoor Porch Screen 159 sq. ft, Outdoor Deck 323 sq. ft, Walls: 153 sq. ft

Property summary

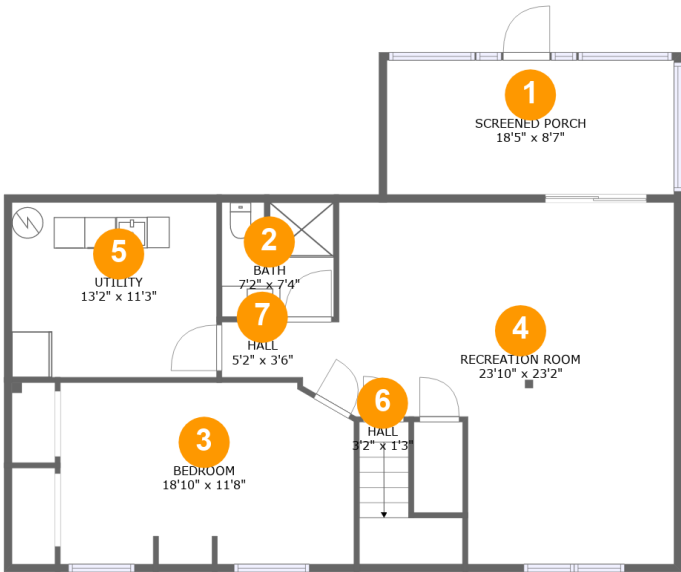
 **2** Floors

 **4** Bedrooms

 **3** Bathrooms

Home report

106 Mason Farm Drive, Middleway, Kearneysville, Jefferson County, West Virginia, United States, 25430

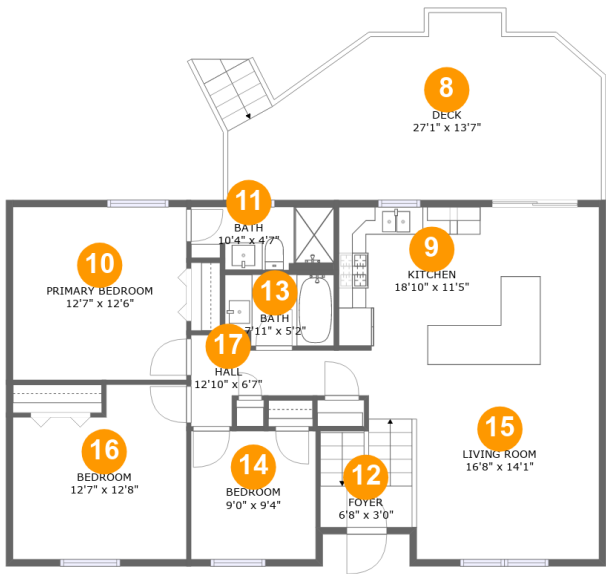


Room dimensions

Floor 1 Total:987sqft Excluded: 159sqft

#		Max Dimensions	sqft	Included
1	Screened Porch	18'5" x 8'7"	159 sq. ft	No
2	Bath	7'2" x 7'4"	52 sq. ft	Yes
3	Bedroom	18'10" x 11'8"	213 sq. ft	Yes
4	Recreation Room	23'10" x 23'2"	431 sq. ft	Yes
5	Utility	13'2" x 11'3"	147 sq. ft	Yes
6	Hall	3'2" x 1'3"	39 sq. ft	Yes
7	Hall	5'2" x 3'6"	18 sq. ft	Yes

106 Mason Farm Drive, Middleway, Kearneysville, Jefferson County, West Virginia, United States, 25430



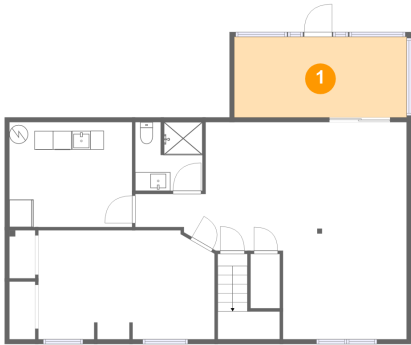
Room dimensions

Floor 2 Total:1068sqft Excluded: 323sqft

#		Max Dimensions	sqft	Included
8	Deck	27'1" x 13'7"	323 sq. ft	No
9	Kitchen	18'10" x 11'5"	212 sq. ft	Yes
10	Primary Bedroom	12'7" x 12'6"	158 sq. ft	Yes
11	Bath	10'4" x 4'7"	45 sq. ft	Yes
12	Foyer	6'8" x 3'0"	49 sq. ft	Yes
13	Bath	7'11" x 5'2"	39 sq. ft	Yes
14	Bedroom	9'0" x 9'4"	84 sq. ft	Yes
15	Living Room	16'8" x 14'1"	203 sq. ft	Yes
16	Bedroom	12'7" x 12'8"	143 sq. ft	Yes
17	Hall	12'10" x 6'7"	53 sq. ft	Yes

106 Mason Farm Drive, Middleway, Kearneysville, Jefferson County, West Virginia, United States, 25430

1 Floor 1 - Screened Porch



Max Dimensions: 18'5" x 8'7"
Calculated Area: 159 sq. ft
Included: No

Heated: No
Finished: Yes
Enclosed: No
Contiguous: Yes
Permitted: Yes
Wet space: No
Addition: No
Conversion: No

2 Floor 1 - Bath

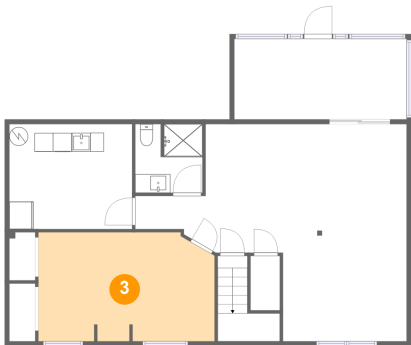


Max Dimensions: 7'2" x 7'4"
Calculated Area: 52 sq. ft
Included: Yes

Heated: Yes
Finished: Yes
Enclosed: Yes
Contiguous: Yes
Permitted: Yes
Wet space: Yes
Addition: No
Conversion: No

106 Mason Farm Drive, Middleway, Kearneysville, Jefferson
County, West Virginia, United States, 25430

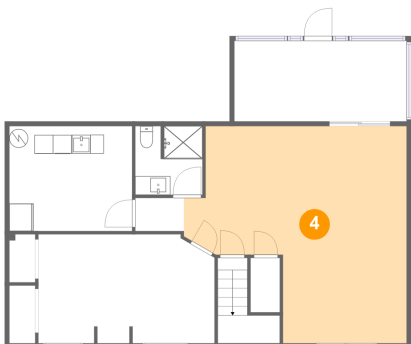
3 Floor 1 - Bedroom



Max Dimensions: 18'10" x 11'8"
Calculated Area: 213 sq. ft
Included: Yes

Heated: Yes
Finished: Yes
Enclosed: Yes
Contiguous: Yes
Permitted: Yes
Wet space: No
Addition: No
Conversion: No

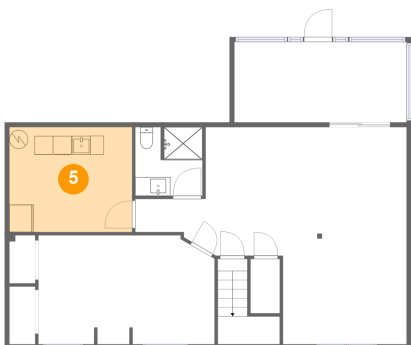
4 Floor 1 - Recreation Room



Max Dimensions: 23'10" x 23'2"
Calculated Area: 431 sq. ft
Included: Yes

Heated: Yes
Finished: Yes
Enclosed: Yes
Contiguous: Yes
Permitted: Yes
Wet space: No
Addition: No
Conversion: No

5 Floor 1 - Utility

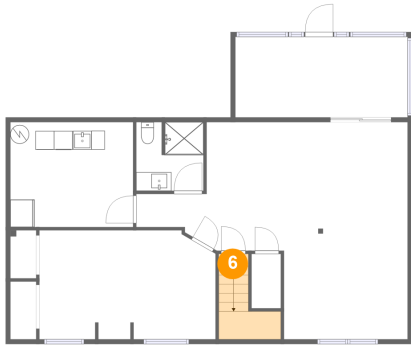


Max Dimensions: 13'2" x 11'3"
Calculated Area: 147 sq. ft
Included: Yes

Heated: Yes
Finished: Yes
Enclosed: Yes
Contiguous: Yes
Permitted: Yes
Wet space: No
Addition: No
Conversion: No

106 Mason Farm Drive, Middleway, Kearneysville, Jefferson
County, West Virginia, United States, 25430

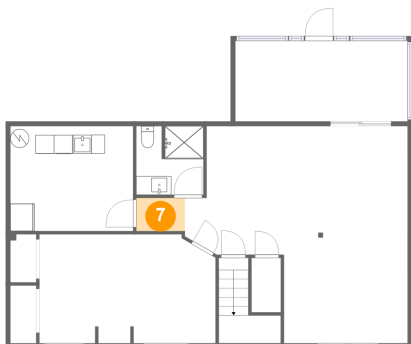
6 Floor 1 - Hall



Max Dimensions: 3'2" x 1'3"
Calculated Area: 39 sq. ft
Included: Yes

Heated: Yes
Finished: Yes
Enclosed: Yes
Contiguous: Yes
Permitted: Yes
Wet space: No
Addition: No
Conversion: No

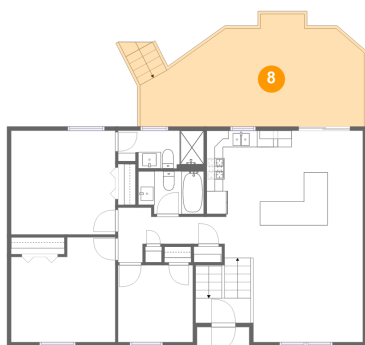
7 Floor 1 - Hall



Max Dimensions: 5'2" x 3'6"
Calculated Area: 18 sq. ft
Included: Yes

Heated: Yes
Finished: Yes
Enclosed: Yes
Contiguous: Yes
Permitted: Yes
Wet space: No
Addition: No
Conversion: No

8 Floor 2 - Deck



Max Dimensions: 27'1" x
13'7"
Calculated Area: 323 sq. ft
Included: No

Heated: No
Finished: Yes
Enclosed: No
Contiguous:
Yes
Permitted: Yes
Wet space: No
Addition: No
Conversion: No

106 Mason Farm Drive, Middleway, Kearneysville, Jefferson
County, West Virginia, United States, 25430

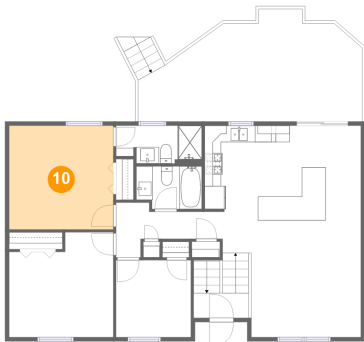
9 Floor 2 - Kitchen



Max Dimensions: 18'10" x 11'5"
Calculated Area: 212 sq. ft
Included: Yes

Heated: Yes
Finished: Yes
Enclosed: Yes
Contiguous: Yes
Permitted: Yes
Wet space: No
Addition: No
Conversion: No

10 Floor 2 - Primary Bedroom



Max Dimensions: 12'7" x 12'6"
Calculated Area: 158 sq. ft
Included: Yes

Heated: Yes
Finished: Yes
Enclosed: Yes
Contiguous: Yes
Permitted: Yes
Wet space: No
Addition: No
Conversion: No

11 Floor 2 - Bath

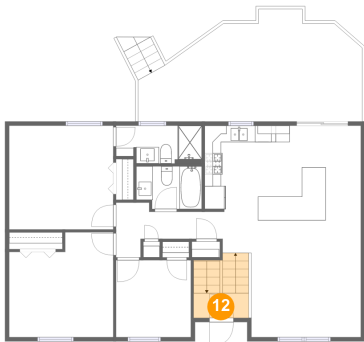


Max Dimensions: 10'4" x 4'7"
Calculated Area: 45 sq. ft
Included: Yes

Heated: Yes
Finished: Yes
Enclosed: Yes
Contiguous: Yes
Permitted: Yes
Wet space: Yes
Addition: No
Conversion: No

106 Mason Farm Drive, Middleway, Kearneysville, Jefferson
County, West Virginia, United States, 25430

12 Floor 2 - Foyer



Max Dimensions: 6'8" x 3'0"
Calculated Area: 49 sq. ft
Included: Yes

Heated: Yes
Finished: Yes
Enclosed: Yes
Contiguous: Yes
Permitted: Yes
Wet space: No
Addition: No
Conversion: No

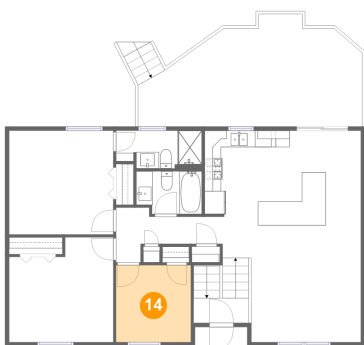
13 Floor 2 - Bath



Max Dimensions: 7'11" x 5'2"
Calculated Area: 39 sq. ft
Included: Yes

Heated: Yes
Finished: Yes
Enclosed: Yes
Contiguous: Yes
Permitted: Yes
Wet space: Yes
Addition: No
Conversion: No

14 Floor 2 - Bedroom

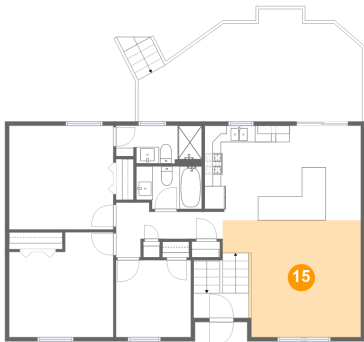


Max Dimensions: 9'0" x 9'4"
Calculated Area: 84 sq. ft
Included: Yes

Heated: Yes
Finished: Yes
Enclosed: Yes
Contiguous: Yes
Permitted: Yes
Wet space: No
Addition: No
Conversion: No

106 Mason Farm Drive, Middleway, Kearneysville, Jefferson
County, West Virginia, United States, 25430

15 Floor 2 - Living Room



Max Dimensions: 16'8" x 14'1"
Calculated Area: 203 sq. ft
Included: Yes

Heated: Yes
Finished: Yes
Enclosed: Yes
Contiguous: Yes
Permitted: Yes
Wet space: No
Addition: No
Conversion: No

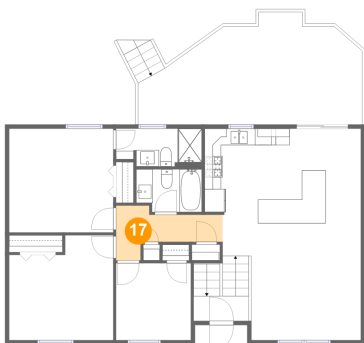
16 Floor 2 - Bedroom



Max Dimensions: 12'7" x 12'8"
Calculated Area: 143 sq. ft
Included: Yes

Heated: Yes
Finished: Yes
Enclosed: Yes
Contiguous: Yes
Permitted: Yes
Wet space: No
Addition: No
Conversion: No

17 Floor 2 - Hall



Max Dimensions: 12'10" x 6'7"
Calculated Area: 53 sq. ft
Included: Yes

Heated: Yes
Finished: Yes
Enclosed: Yes
Contiguous: Yes
Permitted: Yes
Wet space: No
Addition: No
Conversion: No