

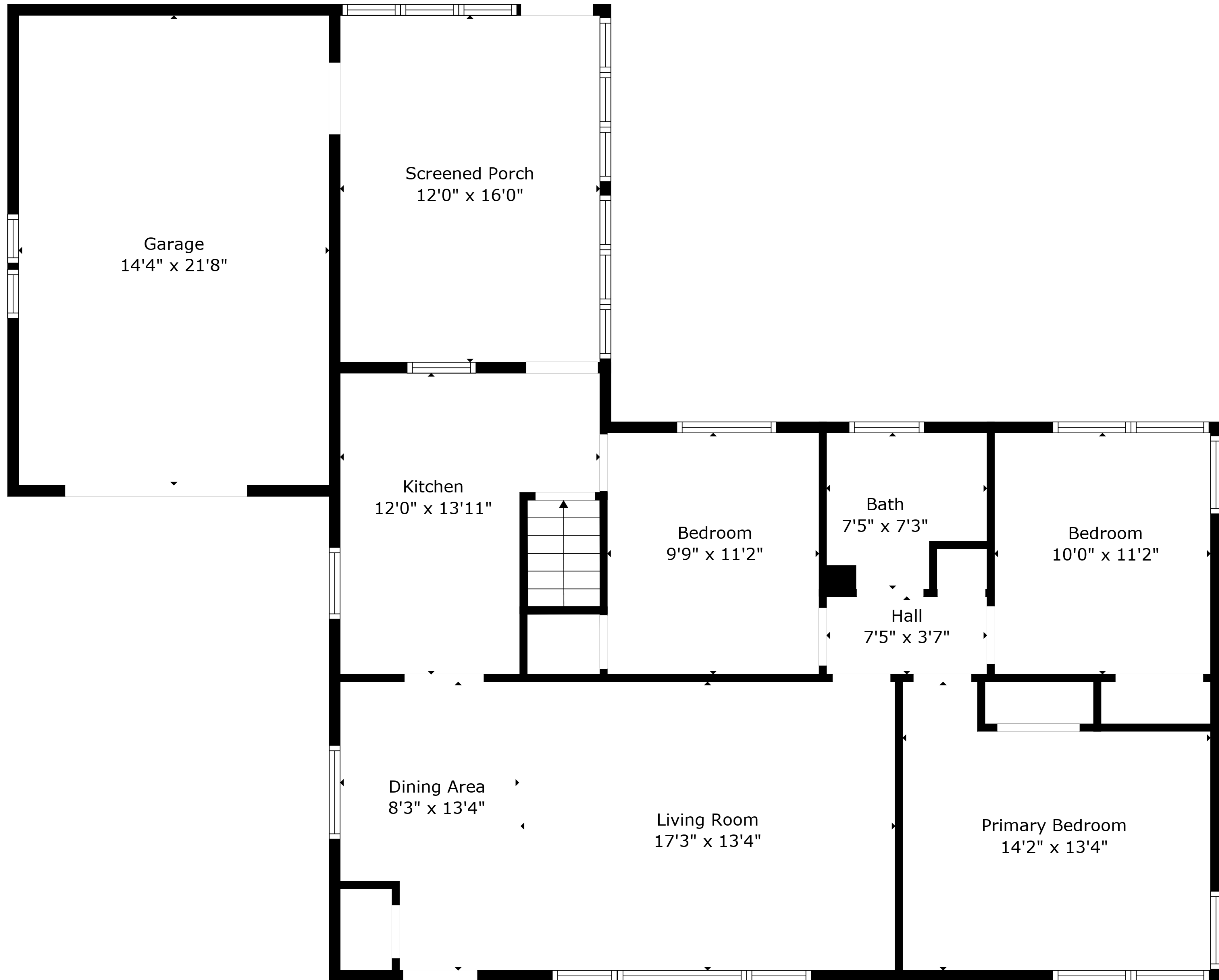
Room
20'9" x 10'11"

Basement
36'9" x 22'3"

W.i.c.
8'3" x 2'11"

TOTAL: 1327 sq. ft
BELOW GROUND: 297 sq. ft, FLOOR 2: 1030 sq. ft
EXCLUDED AREAS: BASEMENT: 521 sq. ft, GARAGE: 311 sq. ft, SCREENED PORCH: 192 sq. ft

Created By Nordy Photography. Calculations Deemed Highly Reliable But Not Guaranteed.

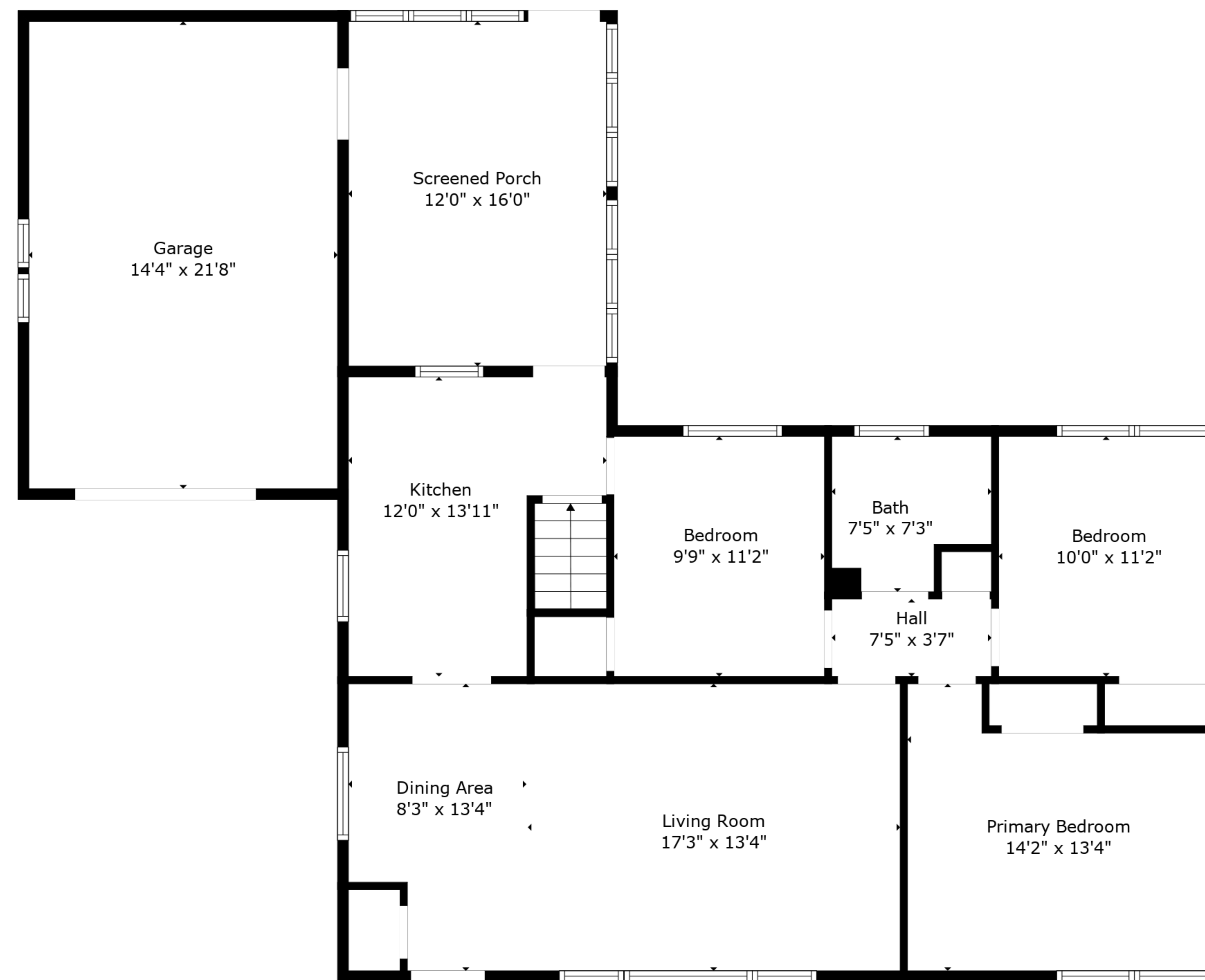


TOTAL: 1327 sq. ft

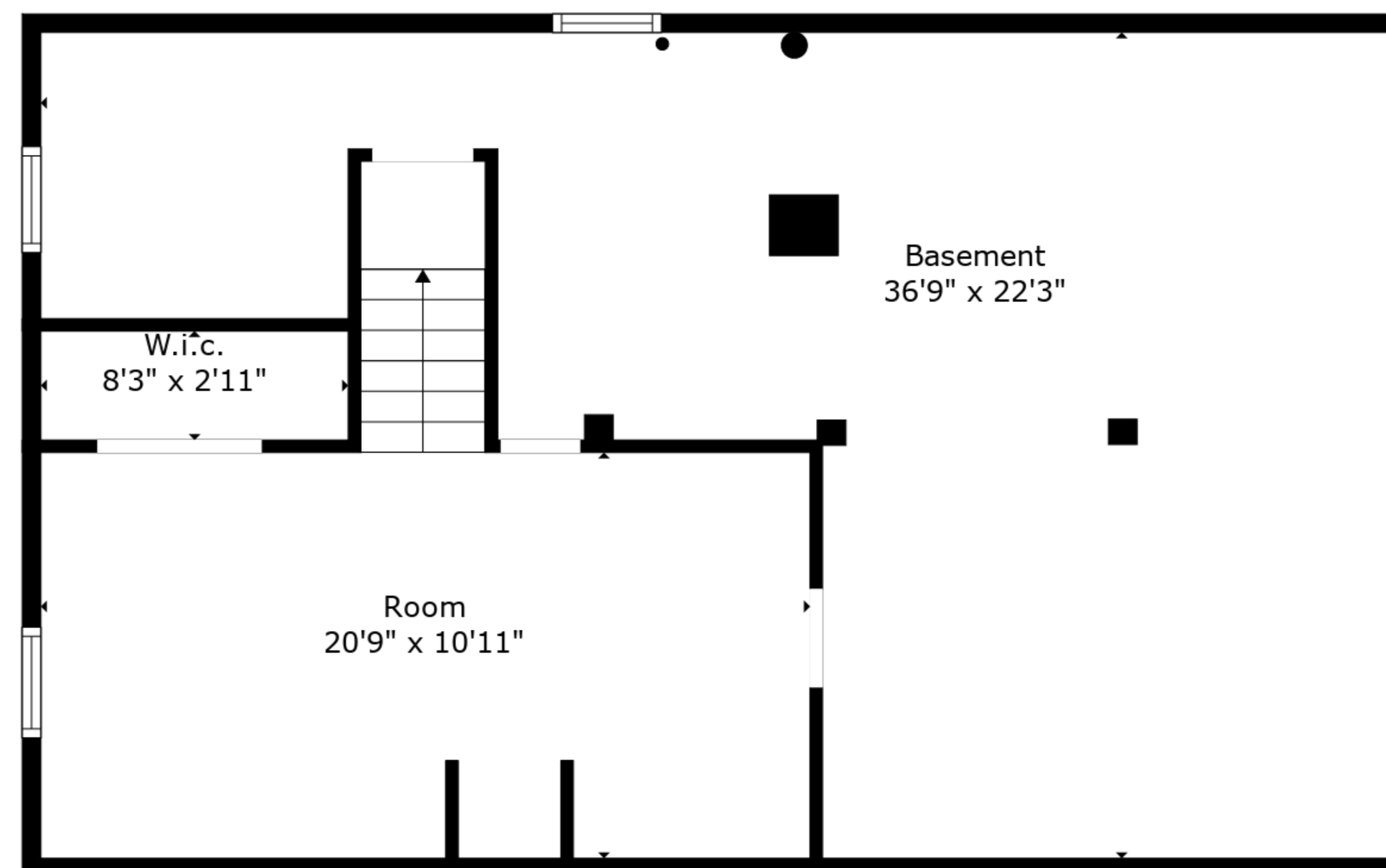
BELOW GROUND: 297 sq. ft, FLOOR 2: 1030 sq. ft

EXCLUDED AREAS: BASEMENT: 521 sq. ft, GARAGE: 311 sq. ft, SCREENED PORCH: 192 sq. ft

Created By Nordy Photography. Calculations Deemed Highly Reliable But Not Guaranteed.



Floor 2



Floor 1

TOTAL: 1327 sq. ft

BELOW GROUND: 297 sq. ft, FLOOR 2: 1030 sq. ft

EXCLUDED AREAS: BASEMENT: 521 sq. ft, GARAGE: 311 sq. ft, SCREENED PORCH: 192 sq. ft

Created By Nordy Photography. Calculations Deemed Highly Reliable But Not Guaranteed.