



Home report


20140 N 269th Dr,Buckeye,AZ,US




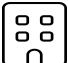
Property summary


**2** Garages


**2** Bedrooms

**2** Bathrooms

**0** Half baths

**1** Floors

**2,109** Gross living area sqft

**3,480** Total sqft

Home report

20140 N 269th Dr,Buckeye,AZ,US



Room dimensions

Floor 1 Total sqft: 3480 Living area: 2109

#		Dimensions	sqft	Counted as living area
1	Garage	18'9" x 11'1"	207 sq. ft	No
2	Breakfast Nook	13'5" x 9'5"	127 sq. ft	Yes
3	Primary Bedroom	16'6" x 15'3"	242 sq. ft	Yes
4	Bedroom	13'4" x 13'2"	151 sq. ft	Yes
5	Primary Bath	11'11" x 13'2"	127 sq. ft	Yes
6	Covered Patio	28'1" x 9'4"	263 sq. ft	No
7	Office	11'6" x 12'4"	142 sq. ft	Yes
8	Hall	5'6" x 8'9"	44 sq. ft	Yes
9	Garage	19'3" x 20'10"	400 sq. ft	No
10	Laundry	6'3" x 13'11"	87 sq. ft	Yes
11	Living Room	15'2" x 19'8"	289 sq. ft	Yes

Home report

20140 N 269th Dr,Buckeye,AZ,US

#		Dimensions	sqft	Counted as living area
12	Porch	21'9" x 11'11"	206 sq. ft	No
13	Patio	26'11" x 11'9"	238 sq. ft	No
14	Dining Area	11'1" x 19'8"	198 sq. ft	Yes
15	WC	5'6" x 3'6"	19 sq. ft	Yes
16	Foyer	7'9" x 13'2"	106 sq. ft	Yes
17	Bath	7'6" x 8'9"	54 sq. ft	Yes
18	W.I.C.	11'11" x 6'2"	73 sq. ft	Yes
19	Kitchen	15'4" x 14'3"	193 sq. ft	Yes
20	Hall	8'4" x 5'4"	41 sq. ft	Yes

1 Floor 1 - Garage



Dimensions: 18'9" x 11'1"
Area: 207 sq. ft
Counted as living area: No

Heated: No
Finished: No
Enclosed: Yes
Contiguous: Yes
Permitted: Yes
Wet space: No
Addition: No
Conversion: No

2 Floor 1 - Breakfast Nook



Dimensions: 13'5" x 9'5"
Area: 127 sq. ft
Counted as living area: Yes

Heated: Yes
Finished: Yes
Enclosed: Yes
Contiguous: Yes
Permitted: Yes
Wet space: No
Addition: No
Conversion: No

3 Floor 1 - Primary Bedroom



Dimensions: 16'6" x 15'3"
Area: 242 sq. ft
Counted as living area: Yes

Heated: Yes
Finished: Yes
Enclosed: Yes
Contiguous: Yes
Permitted: Yes
Wet space: No
Addition: No
Conversion: No

4 Floor 1 - Bedroom



Dimensions: 13'4" x 13'2"
Area: 151 sq. ft
Counted as living area: Yes

Heated: Yes
Finished: Yes
Enclosed: Yes
Contiguous: Yes
Permitted: Yes
Wet space: No
Addition: No
Conversion: No

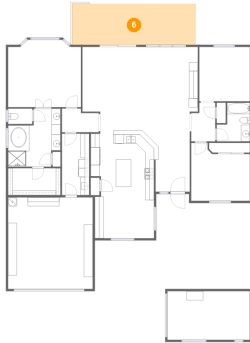
5 Floor 1 - Primary Bath



Dimensions: 11'11" x 13'2"
Area: 127 sq. ft
Counted as living area: Yes

Heated: Yes
Finished: Yes
Enclosed: Yes
Contiguous: Yes
Permitted: Yes
Wet space: Yes
Addition: No
Conversion: No

6 Floor 1 - Covered Patio



Dimensions: 28'1" x 9'4"
Area: 263 sq. ft
Counted as living area: No

Heated: No
Finished: Yes
Enclosed: No
Contiguous: Yes
Permitted: Yes
Wet space: No
Addition: No
Conversion: No

7 Floor 1 - Office



Dimensions: 11'6" x 12'4"
Area: 142 sq. ft
Counted as living area: Yes

Heated: Yes
Finished: Yes
Enclosed: Yes
Contiguous: Yes
Permitted: Yes
Wet space: No
Addition: No
Conversion: No

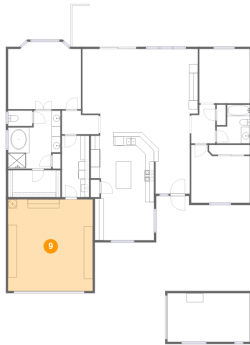
8 Floor 1 - Hall



Dimensions: 5'6" x 8'9"
Area: 44 sq. ft
Counted as living area: Yes

Heated: Yes
Finished: Yes
Enclosed: Yes
Contiguous: Yes
Permitted: Yes
Wet space: No
Addition: No
Conversion: No

9 Floor 1 - Garage



Dimensions: 19'3" x 20'10"
Area: 400 sq. ft
Counted as living area: No

Heated: No
Finished: No
Enclosed: Yes
Contiguous: Yes
Permitted: Yes
Wet space: No
Addition: No
Conversion: No

10 Floor 1 - Laundry



Dimensions: 6'3" x 13'11"
Area: 87 sq. ft
Counted as living area: Yes

Heated: Yes
Finished: Yes
Enclosed: Yes
Contiguous: Yes
Permitted: Yes
Wet space: No
Addition: No
Conversion: No

11 Floor 1 - Living Room



Dimensions: 15'2" x 19'8"
Area: 289 sq. ft
Counted as living area: Yes

Heated: Yes
Finished: Yes
Enclosed: Yes
Contiguous: Yes
Permitted: Yes
Wet space: No
Addition: No
Conversion: No

12 Floor 1 - Porch



Dimensions: 21'9" x 11'11"
Area: 206 sq. ft
Counted as living area: No

Heated: No
Finished: Yes
Enclosed: No
Contiguous: Yes
Permitted: Yes
Wet space: No
Addition: No
Conversion: No

13 Floor 1 - Patio



Dimensions: 26'11" x 11'9"
Area: 238 sq. ft
Counted as living area: No

Heated: No
Finished: Yes
Enclosed: No
Contiguous: Yes
Permitted: Yes
Wet space: No
Addition: No
Conversion: No

14 Floor 1 - Dining Area



Dimensions: 11'1" x 19'8"
Area: 198 sq. ft
Counted as living area: Yes

Heated: Yes
Finished: Yes
Enclosed: Yes
Contiguous: Yes
Permitted: Yes
Wet space: No
Addition: No
Conversion: No

15 Floor 1 - WC



Dimensions: 5'6" x 3'6"
Area: 19 sq. ft
Counted as living area: Yes

Heated: Yes
Finished: Yes
Enclosed: Yes
Contiguous: Yes
Permitted: Yes
Wet space: Yes
Addition: No
Conversion: No

16 Floor 1 - Foyer



Dimensions: 7'9" x 13'2"
Area: 106 sq. ft
Counted as living area: Yes

Heated: Yes
Finished: Yes
Enclosed: Yes
Contiguous: Yes
Permitted: Yes
Wet space: No
Addition: No
Conversion: No

17 Floor 1 - Bath



Dimensions: 7'6" x 8'9"
Area: 54 sq. ft
Counted as living area: Yes

Heated: Yes
Finished: Yes
Enclosed: Yes
Contiguous: Yes
Permitted: Yes
Wet space: Yes
Addition: No
Conversion: No

18 Floor 1 - W.I.C.



Dimensions: 11'11" x 6'2"
Area: 73 sq. ft
Counted as living area: Yes

Heated: Yes
Finished: Yes
Enclosed: Yes
Contiguous: Yes
Permitted: Yes
Wet space: No
Addition: No
Conversion: No

19 Floor 1 - Kitchen



Dimensions: 15'4" x 14'3"
Area: 193 sq. ft
Counted as living area: Yes

Heated: Yes
Finished: Yes
Enclosed: Yes
Contiguous: Yes
Permitted: Yes
Wet space: No
Addition: No
Conversion: No

20 Floor 1 - Hall



Dimensions: 8'4" x 5'4"
Area: 41 sq. ft
Counted as living area: Yes

Heated: Yes
Finished: Yes
Enclosed: Yes
Contiguous: Yes
Permitted: Yes
Wet space: No
Addition: No
Conversion: No