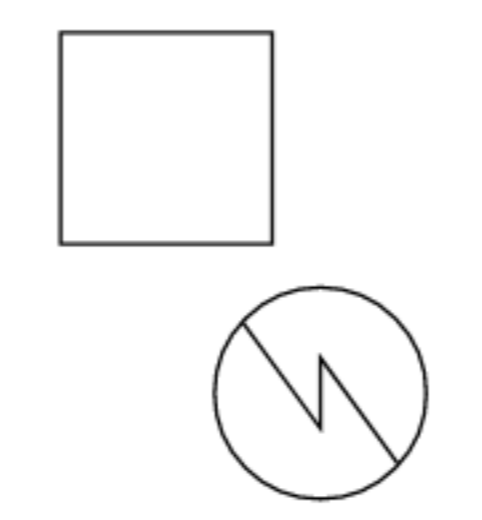
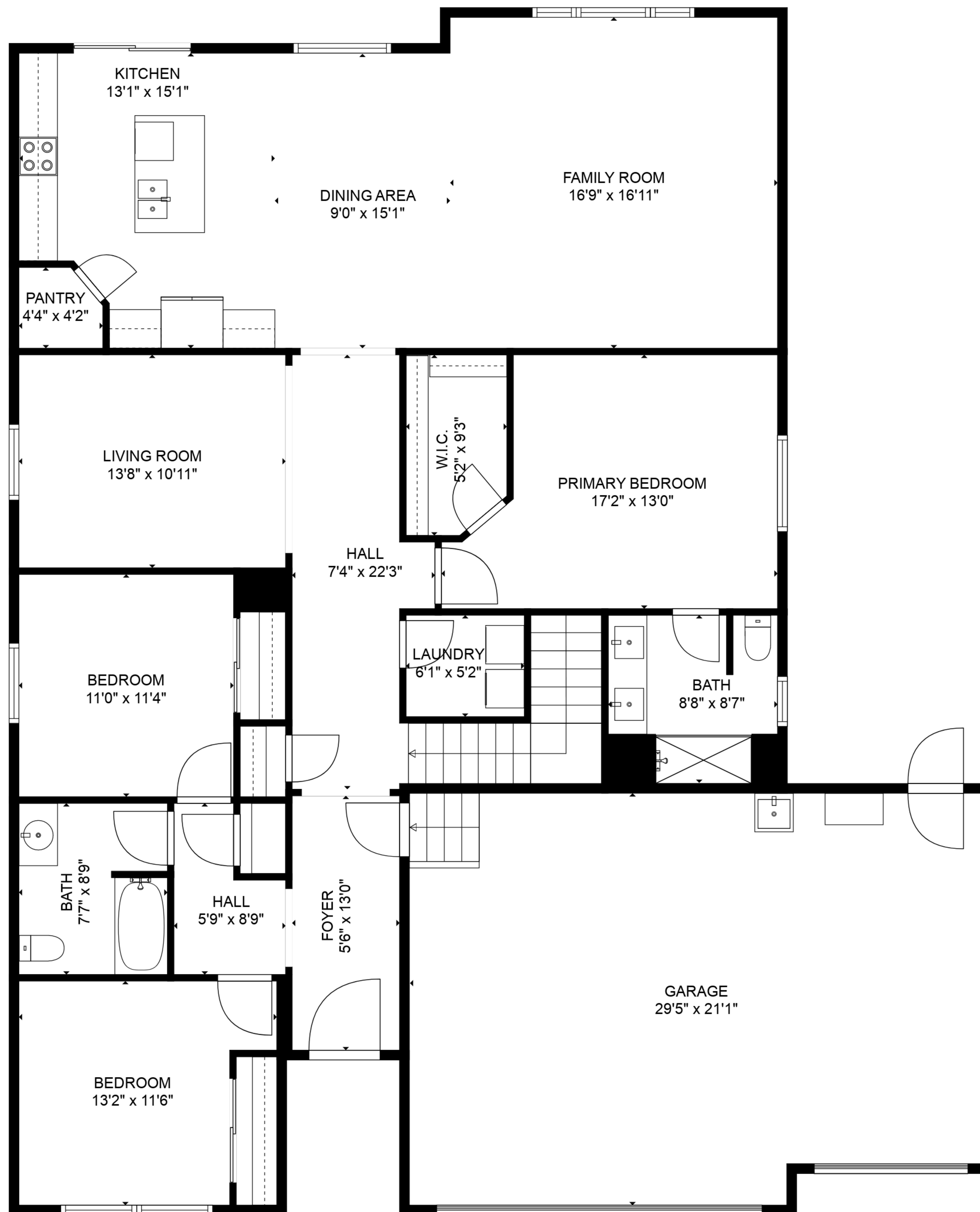


BASEMENT
38'9" x 57'2"



TOTAL: 1852 sq. ft
BELOW GROUND: 0 sq. ft, FLOOR 2: 1852 sq. ft
EXCLUDED AREAS: BASEMENT: 1782 sq. ft, GARAGE: 599 sq. ft

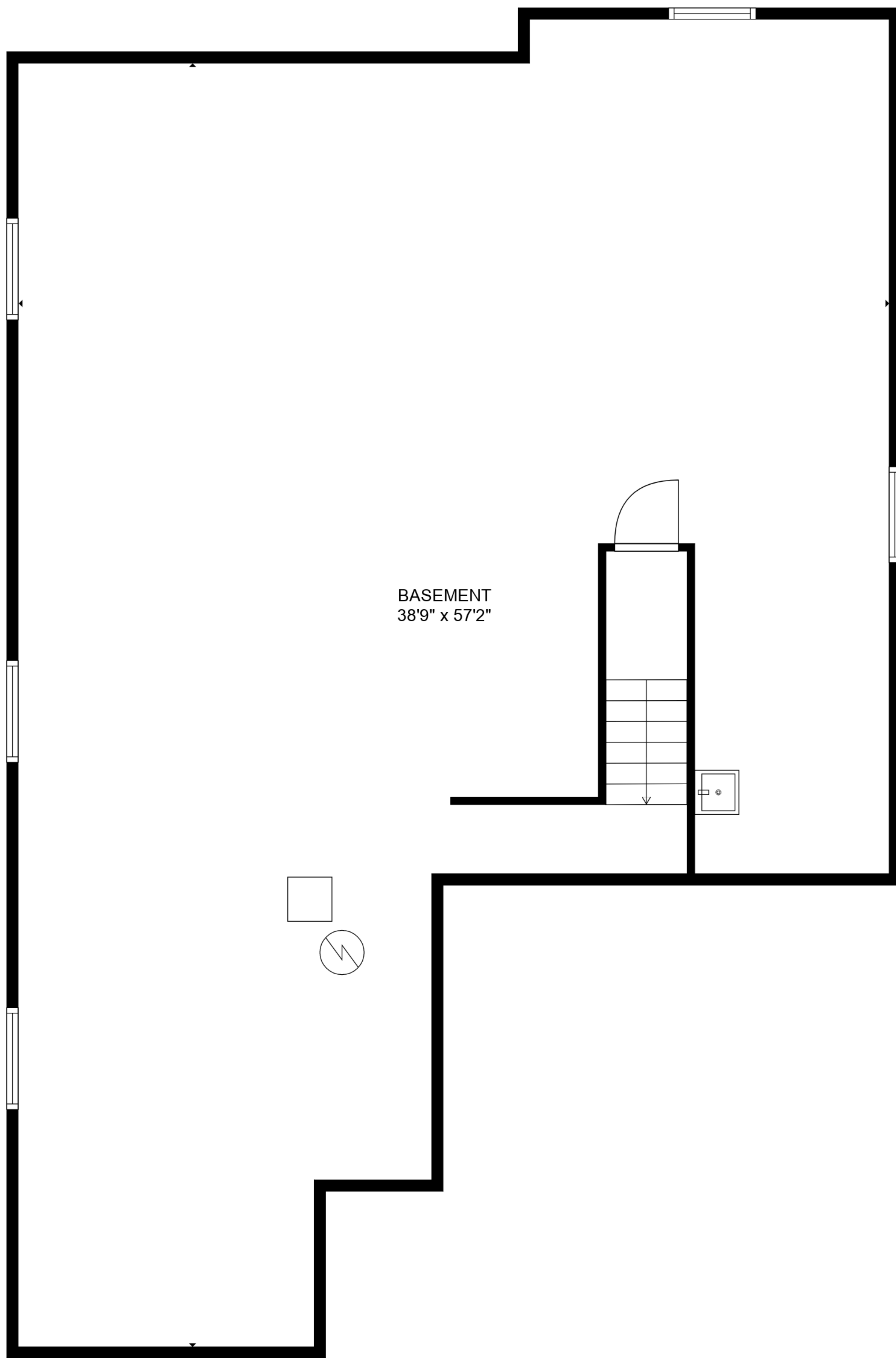
SIZES AND DIMENSIONS ARE APPROXIMATE, ACTUAL MAY VARY.



TOTAL: 1852 sq. ft

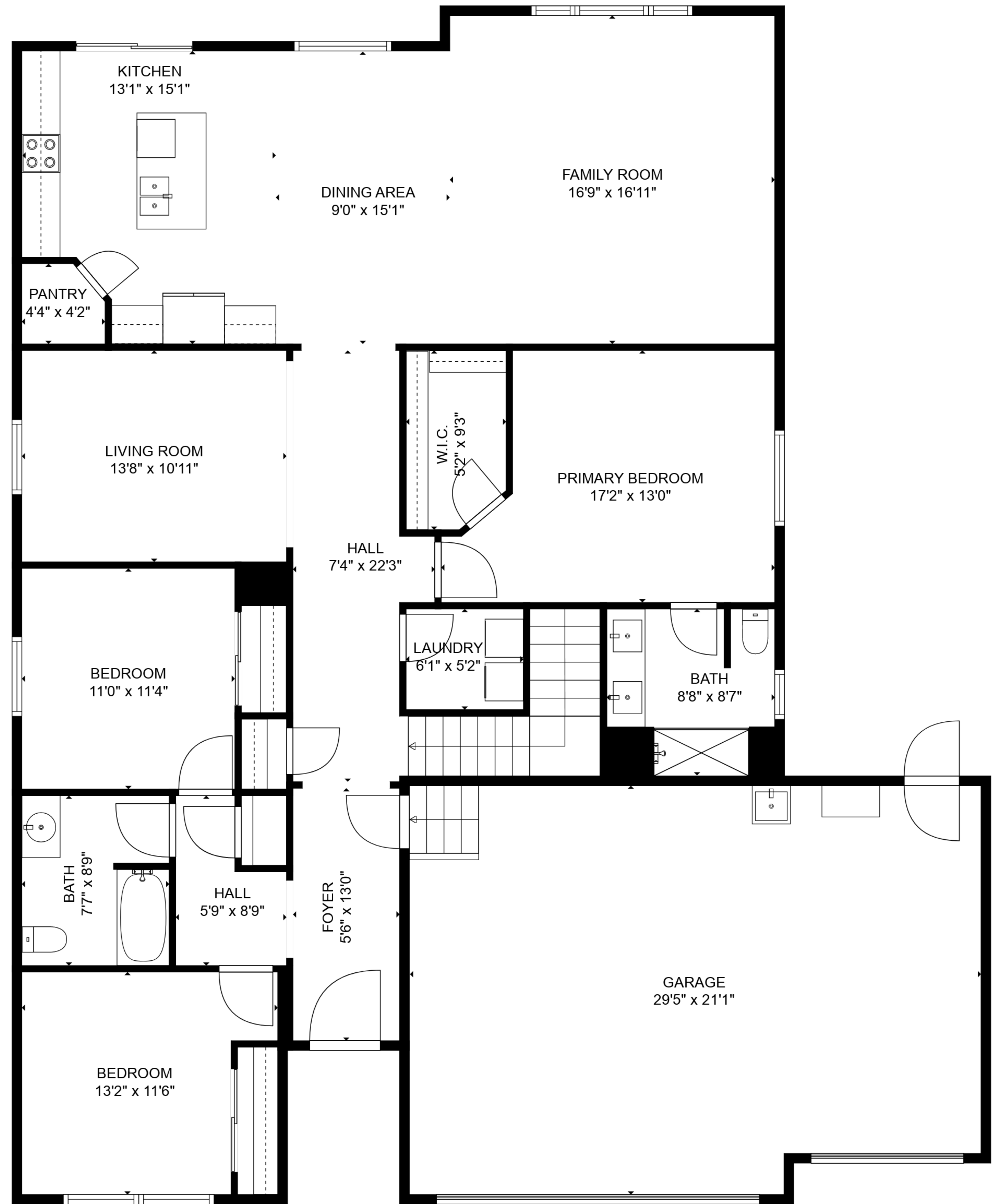
BELOW GROUND: 0 sq. ft, FLOOR 2: 1852 sq. ft
 EXCLUDED AREAS: BASEMENT: 1782 sq. ft, GARAGE: 599 sq. ft

SIZES AND DIMENSIONS ARE APPROXIMATE, ACTUAL MAY VARY.



BASEMENT
38'9" x 57'2"

FLOOR 1



KITCHEN
13'1" x 15'1"

DINING AREA
9'0" x 15'1"

FAMILY ROOM
16'9" x 16'11"

PANTRY
4'4" x 4'2"

LIVING ROOM
13'8" x 10'11"

W.I.C.
5'2" x 9'3"

PRIMARY BEDROOM
17'2" x 13'0"

HALL
7'4" x 22'3"

BEDROOM
11'0" x 11'4"

LAUNDRY
6'1" x 5'2"

BATH
8'8" x 8'7"

BATH
7'7" x 8'9"

HALL
5'9" x 8'9"

FOYER
5'6" x 13'0"

BEDROOM
13'2" x 11'6"

GARAGE
29'5" x 21'1"

FLOOR 2

TOTAL: 1852 sq. ft
 BELOW GROUND: 0 sq. ft, FLOOR 2: 1852 sq. ft
 EXCLUDED AREAS: BASEMENT: 1782 sq. ft, GARAGE: 599 sq. ft

SIZES AND DIMENSIONS ARE APPROXIMATE, ACTUAL MAY VARY.