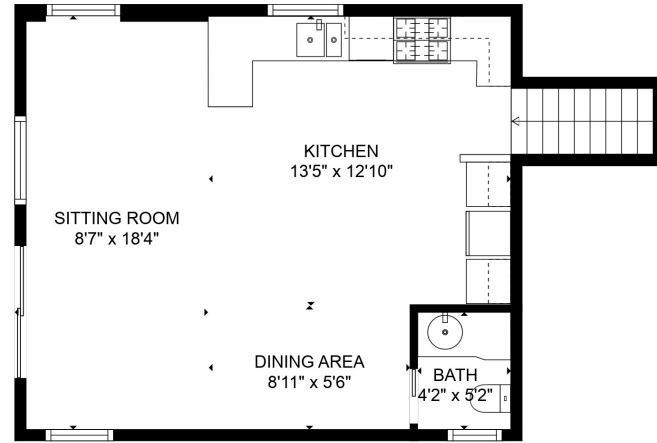
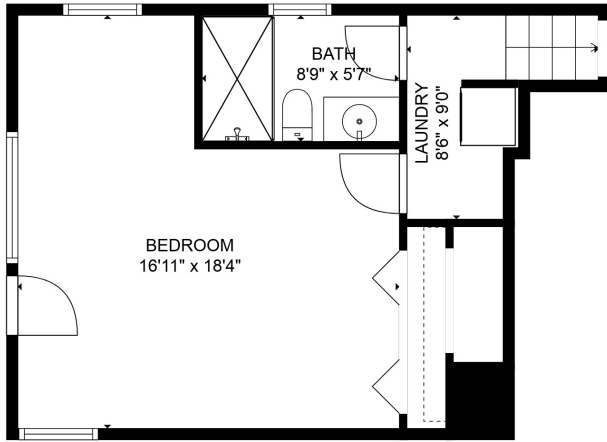


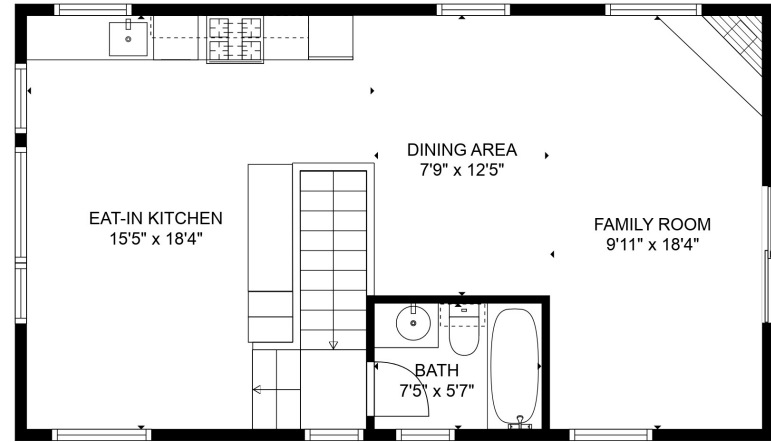
FLOOR 2



FLOOR 3



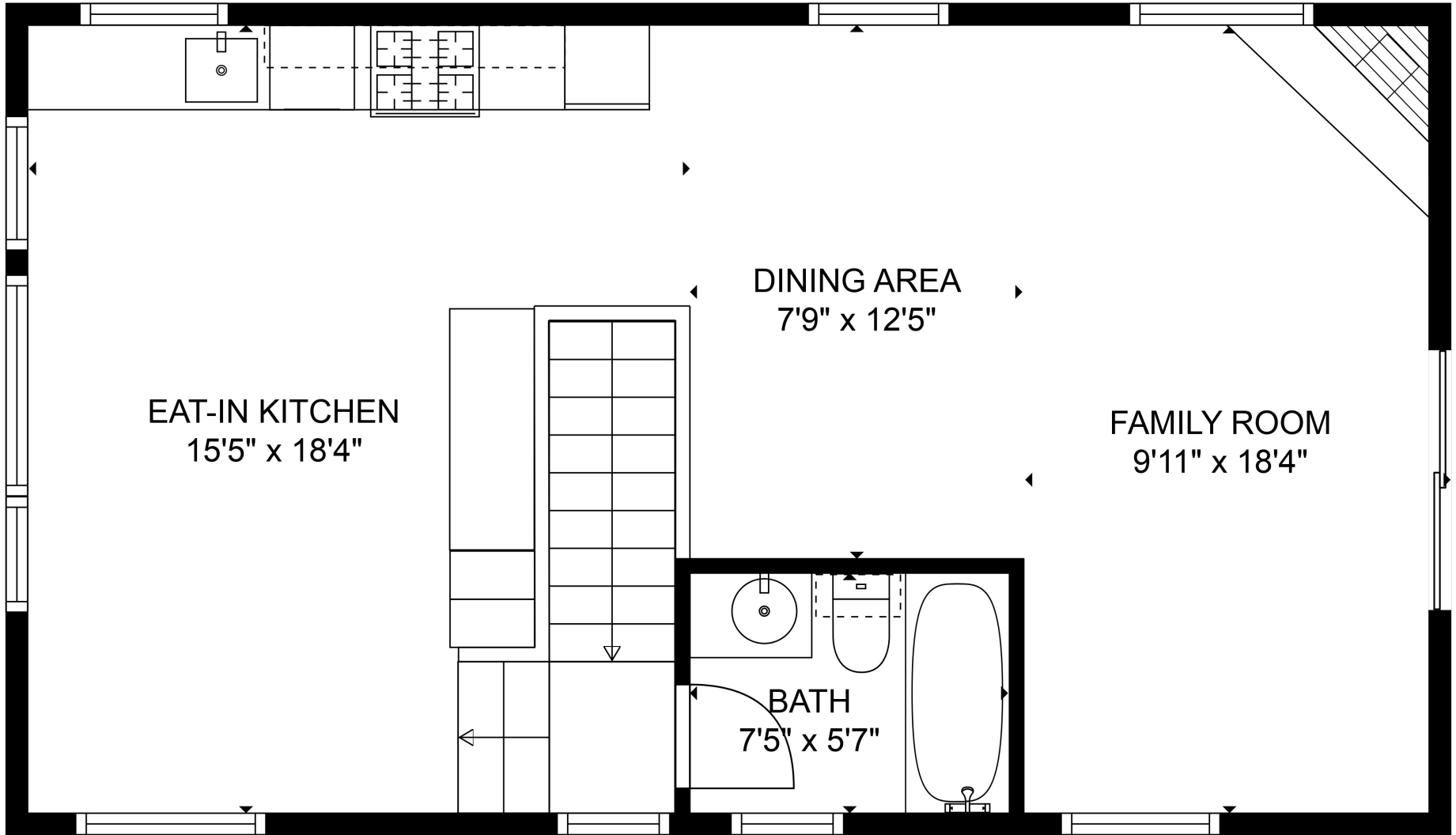
FLOOR 1



FLOOR 4

TOTAL: 1660 sq. ft
 Below Ground: 409 sq. ft, FLOOR 2: 239 sq. ft, FLOOR 3: 413 sq. ft, FLOOR 4: 599 sq. ft
 EXCLUDED AREAS: GARAGE: 314 sq. ft, LOW CEILING: 51 sq. ft, PORCH: 52 sq. ft

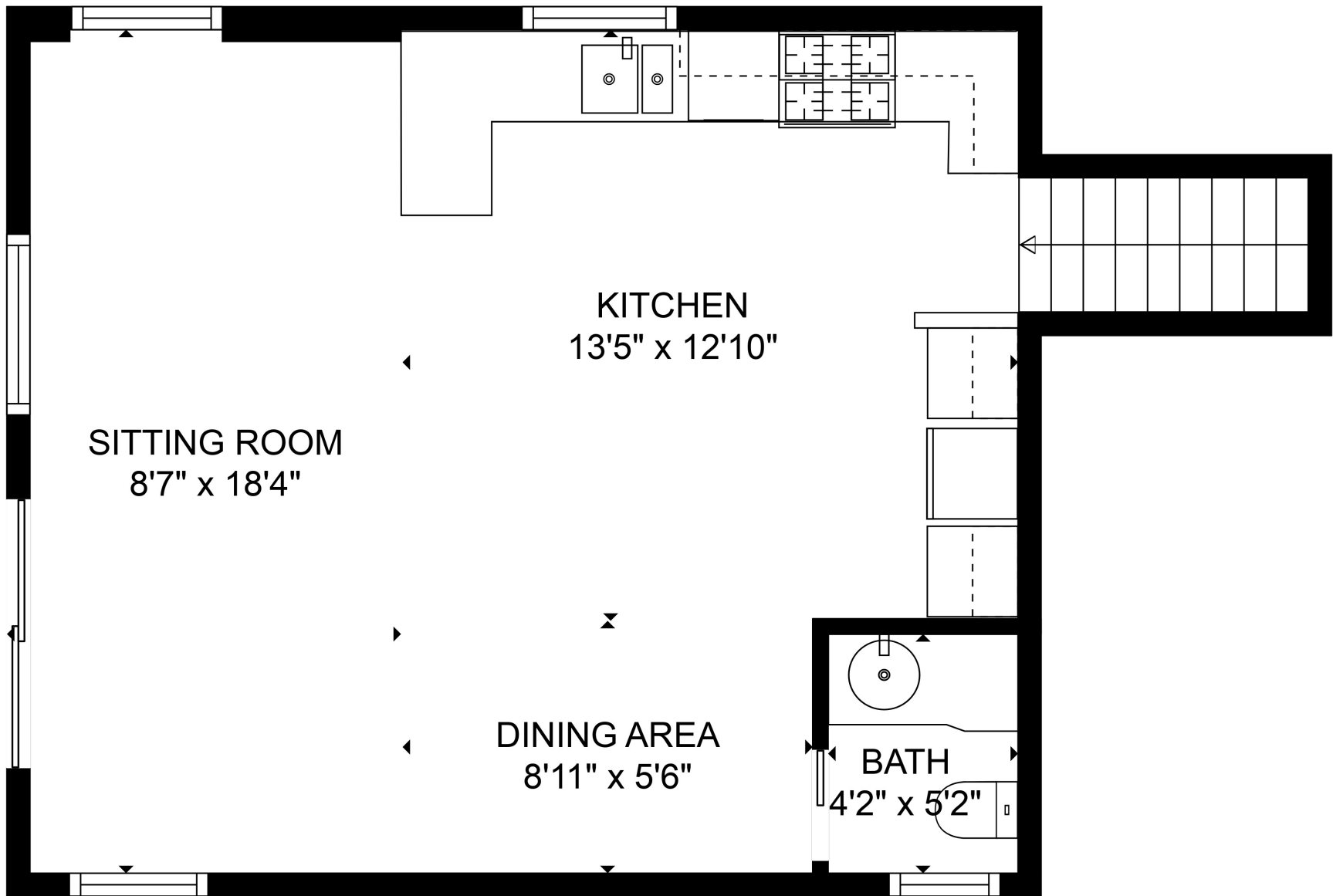
SIZES AND DIMENSIONS ARE APPROXIMATE, ACTUAL MAY VARY.



TOTAL: 1660 sq. ft

Below Ground: 409 sq. ft, FLOOR 2: 239 sq. ft, FLOOR 3: 413 sq. ft, FLOOR 4: 599 sq. ft
EXCLUDED AREAS: GARAGE: 314 sq. ft, LOW CEILING: 51 sq. ft, PORCH: 52 sq. ft

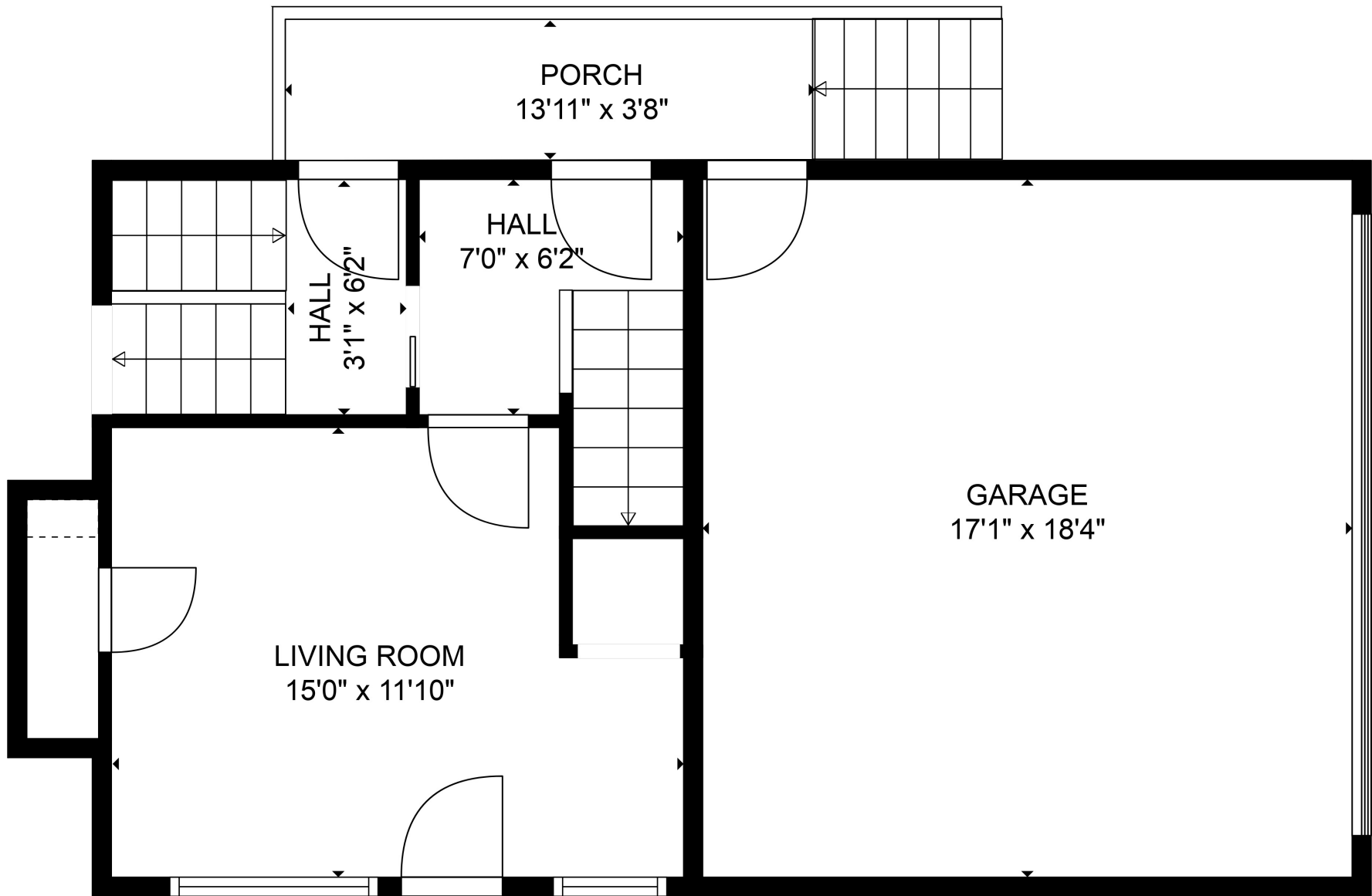
SIZES AND DIMENSIONS ARE APPROXIMATE, ACTUAL MAY VARY.



TOTAL: 1660 sq. ft

Below Ground: 409 sq. ft, FLOOR 2: 239 sq. ft, FLOOR 3: 413 sq. ft, FLOOR 4: 599 sq. ft
EXCLUDED AREAS: GARAGE: 314 sq. ft, LOW CEILING: 51 sq. ft, PORCH: 52 sq. ft

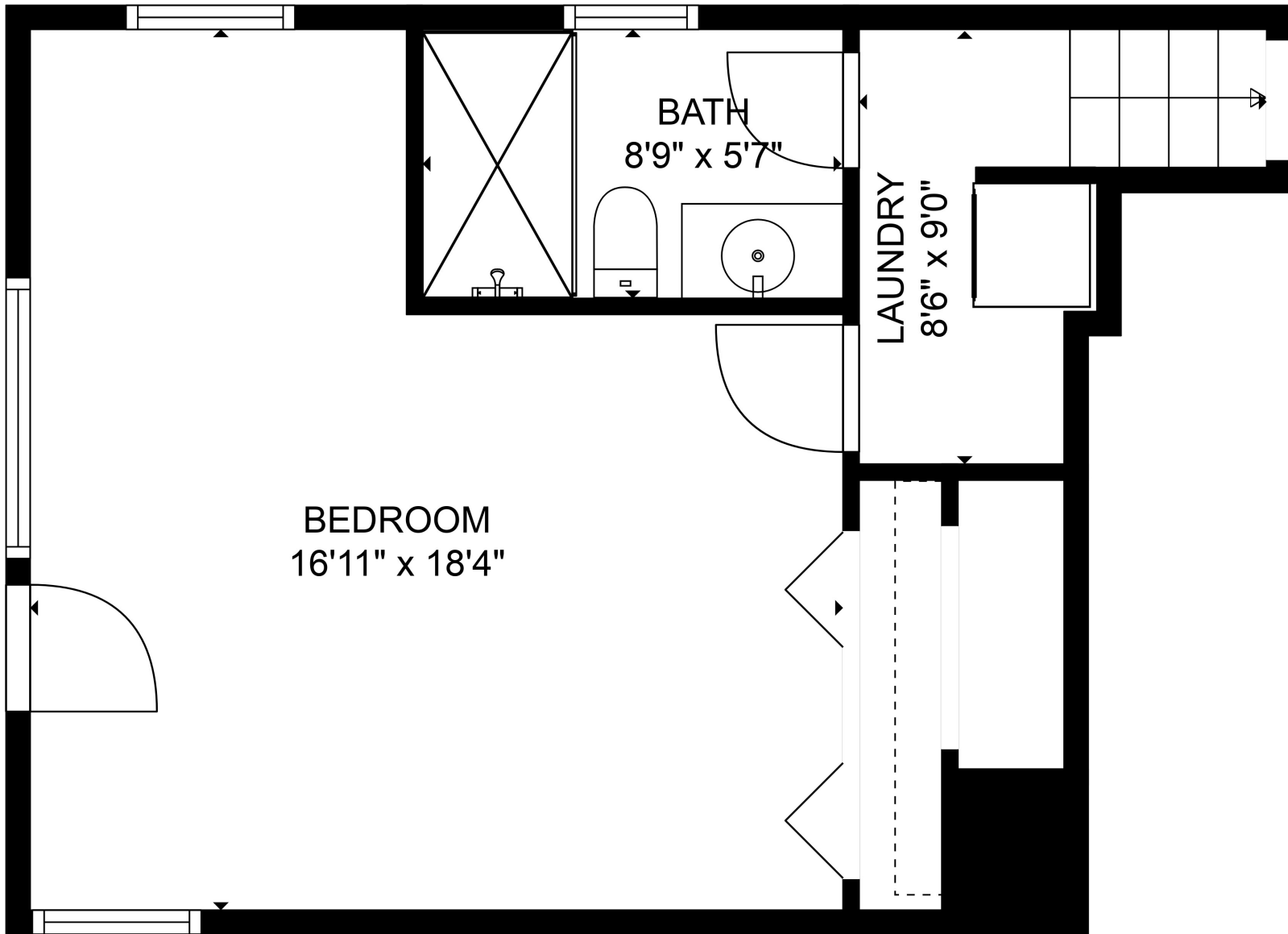
SIZES AND DIMENSIONS ARE APPROXIMATE, ACTUAL MAY VARY.



TOTAL: 1660 sq. ft

Below Ground: 409 sq. ft, FLOOR 2: 239 sq. ft, FLOOR 3: 413 sq. ft, FLOOR 4: 599 sq. ft
EXCLUDED AREAS: GARAGE: 314 sq. ft, LOW CEILING: 51 sq. ft, PORCH: 52 sq. ft

SIZES AND DIMENSIONS ARE APPROXIMATE, ACTUAL MAY VARY.



BEDROOM
16'11" x 18'4"

BATH
8'9" x 5'7"

LAUNDRY
8'6" x 9'0"

TOTAL: 1660 sq. ft

Below Ground: 409 sq. ft, FLOOR 2: 239 sq. ft, FLOOR 3: 413 sq. ft, FLOOR 4: 599 sq. ft
EXCLUDED AREAS: GARAGE: 314 sq. ft, LOW CEILING: 51 sq. ft, PORCH: 52 sq. ft

SIZES AND DIMENSIONS ARE APPROXIMATE, ACTUAL MAY VARY.