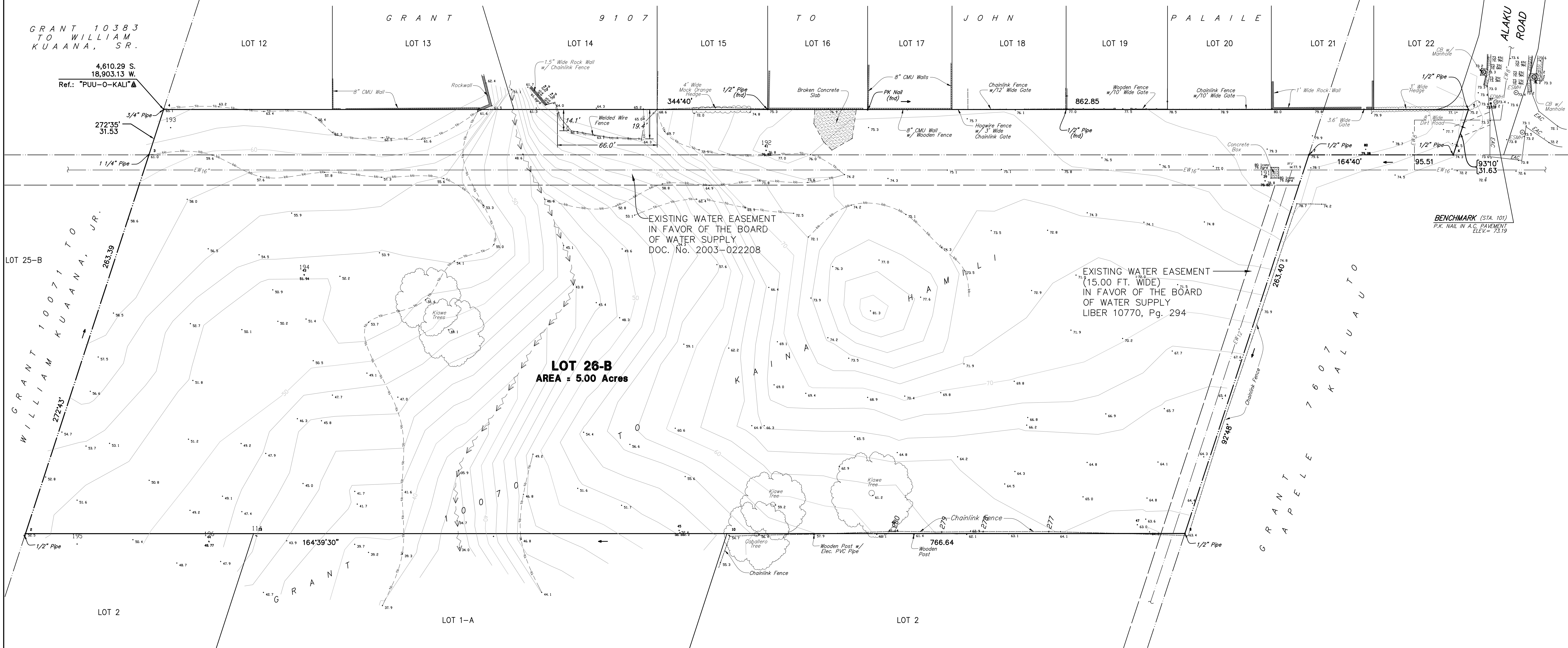


"KEONEKAI HEIGHTS IV SUBDIVISION"  
(FILE PLAN 2095)



EXISTING WATER EASEMENT  
IN FAVOR OF THE BOARD  
OF WATER SUPPLY  
DOC. No. 2003-022208

EXISTING WATER EASEMENT  
(15.00 FT. WIDE)  
IN FAVOR OF THE BOARD  
OF WATER SUPPLY  
LIBER 10770, Pg. 294

**TOPOGRAPHIC SURVEY MAP**  
OF  
**LOT 26-B, KAMAOLE HOMESTEADS**

BEING PORTIONS OF GRANT 9107 TO JOHN PALAILE;  
GRANT 9761 TO HAMILI OR HIS HEIRS AND  
GRANT 10070 TO KAINA HAMILI

**AT KAMAOLE, KIEHI, MAUI, HAWAII**

**LEGEND AND ABBREVIATIONS:**

- 60 ——— CONTOUR
- 70.9 ——— EXISTING SPOT ELEVATION
- EAC ——— EDGE AC PAVEMENT
- CB ——— CATCH BASIN
- ESMH ——— EXISTING SEWER MANHOLE
- EDMH ——— EXISTING DRAIN MANHOLE
- WV ——— WATER VALVE
- tb ——— TOP BANK
- bb ——— BOTTOM BANK
- EW16 ——— WATERLINE AND SIZE (APPROX. LOCATION)

- NOTES FOR TOPOGRAPHIC FEATURES:**
- ELEVATION DATUM = APPROXIMATE SEA LEVEL.
  - ALL VISIBLE UTILITY STRUCTURES HAVE BEEN LOCATED IN THE FIELD. HOWEVER, CONNECTION OF UNDERGROUND UTILITY LINES AS SHOWN ARE UNVERIFIED AND COMPILED FROM EXISTING DATA. UNDERGROUND UTILITIES SHOWN HEREON ARE FOR INFORMATION ONLY, HAVING BEEN OBTAINED FROM THE BEST AVAILABLE SOURCES, BUT FROM OTHERS NOT CONNECTED WITH THIS COMPANY. THEREFORE, NO GUARANTEE IS MADE ON THE ACCURACY OR COMPLETENESS OF SAID INFORMATION.



THIS WORK WAS PREPARED BY ME OR UNDER MY SUPERVISION

*Kirk T. Tanaka*  
KIRK T. TANAKA  
Licensed Professional Land Surveyor  
Certificate No. 7223  
License Expires: APRIL 30, 2016

08/08/05  
DATE

2012005 (05-023) ARCHER, TOPO-24x36.DWG (LAYOUT 2) FB#52/64-76