






1721 Saint Pauls Drive, Clearwater, Pinellas County, Florida, United States, 33764



Property Summary

 **1** garages  **3** bedrooms  **2** bathrooms  **1** half baths

 **1** floors

 **2,834** Gross Living Area sqft

 **4,725** total sqft

1721 Saint Pauls Drive, Clearwater, Pinellas County, Florida, United States, 33764



Room Dimensions

Floor 1

Total sqft: 4725

Living area: 2834

#	Room name	Dimensions	Area (sqft)	Counted as Living Area
1	Hall	3'4" x 9'10"	33 sq. ft	Yes
2	Foyer	6'4" x 9'2"	58 sq. ft	Yes
3	Family Room	23'11" x 18'2"	408 sq. ft	Yes
4	Bedroom	12'6" x 16'0"	175 sq. ft	Yes
5	Office	11'8" x 14'0"	141 sq. ft	Yes
6	W.i.c.	6'0" x 6'0"	36 sq. ft	Yes
7	Bedroom	12'6" x 12'1"	151 sq. ft	Yes
8	Dining Area	17'5" x 19'4"	278 sq. ft	Yes
9	Primary Bath	11'9" x 11'7"	118 sq. ft	Yes
10	Living Room	15'11" x 18'2"	258 sq. ft	Yes
11	Covered Patio	35'7" x 11'3"	401 sq. ft	No

Scan captured on Sun, 20 Oct 2024 14:24:34 GMT

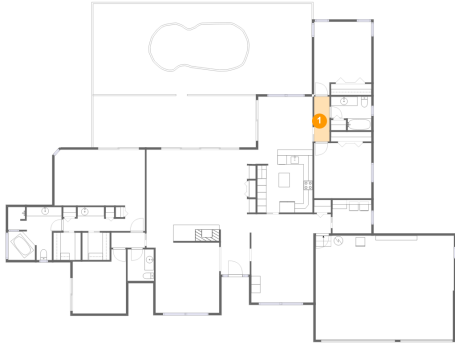
Information is calculated by CubiCasa technology; deemed highly reliable but not guaranteed.

**1721 Saint Pauls Drive, Clearwater, Pinellas
County, Florida, United States, 33764**

#	Room name	Dimensions	Area (sqft)	Counted as Living Area
12	Bath	8'10" x 7'4"	56 sq. ft	Yes
13	Garage	30'3" x 22'9"	684 sq. ft	No
14	Breakfast Nook	11'11" x 11'7"	138 sq. ft	Yes
15	Primary Bedroom	19'9" x 12'2"	240 sq. ft	Yes
16	Swimming Pool	21'3" x 9'7"	181 sq. ft	No
17	Patio	47'10" x 19'9"	945 sq. ft	No
18	Kitchen	12'5" x 13'9"	167 sq. ft	Yes
19	Laundry	8'6" x 7'4"	62 sq. ft	Yes
20	W.i.c.	6'0" x 6'0"	36 sq. ft	Yes
21	Bath	8'11" x 5'3"	39 sq. ft	Yes
22	Hall	7'4" x 3'4"	24 sq. ft	Yes
23	Hall	8'11" x 5'7"	37 sq. ft	Yes
24	Wc	5'9" x 6'11"	40 sq. ft	Yes

1721 Saint Pauls Drive, Clearwater, Pinellas County, Florida, United States, 33764

1 Floor 1 - Hall



Dimensions: 3'4" x 9'10"
Area: 33 sq. ft
Counted as Living Area:
Yes

Heated: Yes
Finished: Yes
Enclosed: Yes
Contiguous:
Yes
Permitted: Yes
Wet Space: No
Addition: No
Conversion: No

2 Floor 1 - Foyer

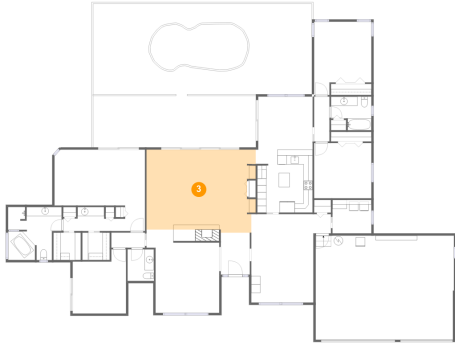


Dimensions: 6'4" x 9'2"
Area: 58 sq. ft
Counted as Living Area:
Yes

Heated: Yes
Finished: Yes
Enclosed: Yes
Contiguous:
Yes
Permitted: Yes
Wet Space: No
Addition: No
Conversion: No

1721 Saint Pauls Drive, Clearwater, Pinellas County, Florida, United States, 33764

3 Floor 1 - Family Room



Dimensions: 23'11" x 18'2"
Area: 408 sq. ft
Counted as Living Area:
Yes

Heated: Yes
Finished: Yes
Enclosed: Yes
Contiguous:
Yes
Permitted: Yes
Wet Space: No
Addition: No
Conversion: No

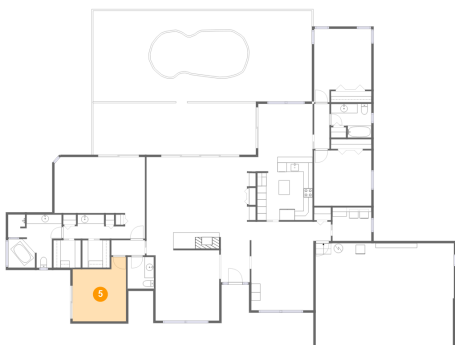
4 Floor 1 - Bedroom



Dimensions: 12'6" x 16'0"
Area: 175 sq. ft
Counted as Living Area:
Yes

Heated: Yes
Finished: Yes
Enclosed: Yes
Contiguous:
Yes
Permitted: Yes
Wet Space: No
Addition: No
Conversion: No

5 Floor 1 - Office



Dimensions: 11'8" x 14'0"
Area: 141 sq. ft
Counted as Living Area:
Yes

Heated: Yes
Finished: Yes
Enclosed: Yes
Contiguous:
Yes
Permitted: Yes
Wet Space: No
Addition: No
Conversion: No

1721 Saint Pauls Drive, Clearwater, Pinellas County, Florida, United States, 33764

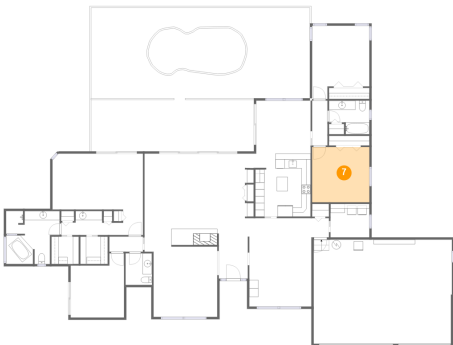
6 Floor 1 - W.i.c.



Dimensions: 6'0" x 6'0"
Area: 36 sq. ft
Counted as Living Area:
Yes

Heated: Yes
Finished: Yes
Enclosed: Yes
Contiguous:
Yes
Permitted: Yes
Wet Space: No
Addition: No
Conversion: No

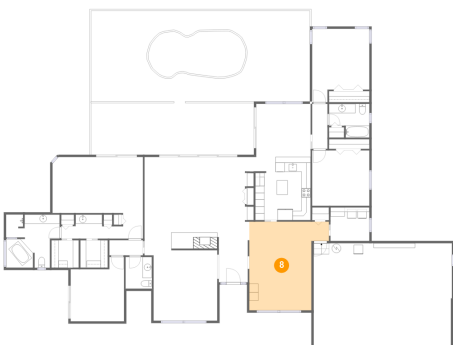
7 Floor 1 - Bedroom



Dimensions: 12'6" x 12'1"
Area: 151 sq. ft
Counted as Living Area:
Yes

Heated: Yes
Finished: Yes
Enclosed: Yes
Contiguous:
Yes
Permitted: Yes
Wet Space: No
Addition: No
Conversion: No

8 Floor 1 - Dining Area



Dimensions: 17'5" x 19'4"
Area: 278 sq. ft
Counted as Living Area:
Yes

Heated: Yes
Finished: Yes
Enclosed: Yes
Contiguous:
Yes
Permitted: Yes
Wet Space: No
Addition: No
Conversion: No

1721 Saint Pauls Drive, Clearwater, Pinellas County, Florida, United States, 33764

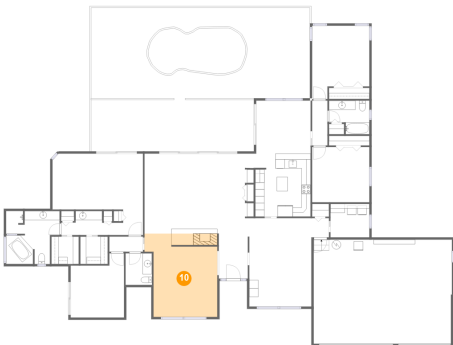
9 Floor 1 - Primary Bath



Dimensions: 11'9" x 11'7"
Area: 118 sq. ft
Counted as Living Area:
Yes

Heated: Yes
Finished: Yes
Enclosed: Yes
Contiguous:
Yes
Permitted: Yes
Wet Space: Yes
Addition: No
Conversion: No

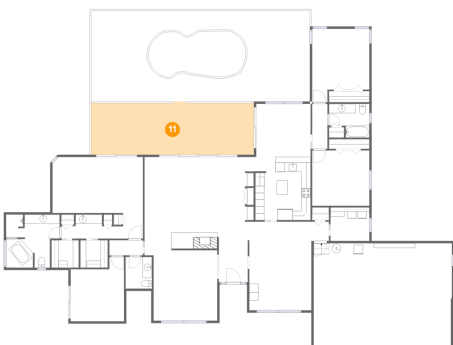
10 Floor 1 - Living Room



Dimensions: 15'11" x 18'2"
Area: 258 sq. ft
Counted as Living Area:
Yes

Heated: Yes
Finished: Yes
Enclosed: Yes
Contiguous:
Yes
Permitted: Yes
Wet Space: No
Addition: No
Conversion: No

11 Floor 1 - Covered Patio



Dimensions: 35'7" x 11'3"
Area: 401 sq. ft
Counted as Living Area: No

Heated: No
Finished: Yes
Enclosed: No
Contiguous: Yes
Permitted: Yes
Wet Space: No
Addition: No
Conversion: No

1721 Saint Pauls Drive, Clearwater, Pinellas County, Florida, United States, 33764

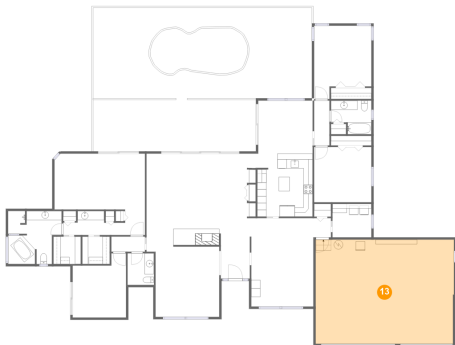
12 Floor 1 - Bath



Dimensions: 8'10" x 7'4"
Area: 56 sq. ft
Counted as Living Area: Yes

Heated: Yes
Finished: Yes
Enclosed: Yes
Contiguous: Yes
Permitted: Yes
Wet Space: Yes
Addition: No
Conversion: No

13 Floor 1 - Garage



Dimensions: 30'3" x 22'9"
Area: 684 sq. ft
Counted as Living Area: No

Heated: No
Finished: No
Enclosed: Yes
Contiguous: Yes
Permitted: Yes
Wet Space: No
Addition: No
Conversion: No

14 Floor 1 - Breakfast Nook

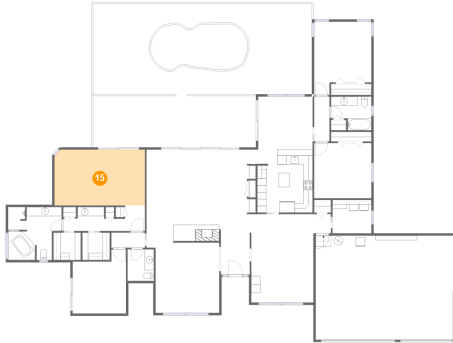


Dimensions: 11'11" x 11'7"
Area: 138 sq. ft
Counted as Living Area: Yes

Heated: Yes
Finished: Yes
Enclosed: Yes
Contiguous: Yes
Permitted: Yes
Wet Space: No
Addition: No
Conversion: No

1721 Saint Pauls Drive, Clearwater, Pinellas County, Florida, United States, 33764

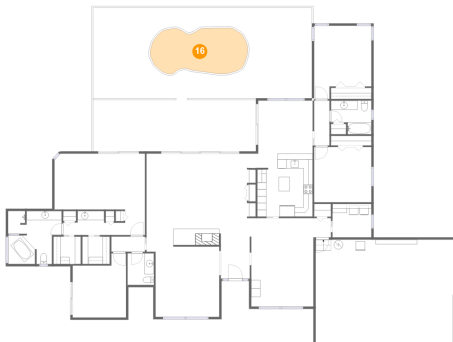
15 Floor 1 - Primary Bedroom



Dimensions: 19'9" x 12'2"
Area: 240 sq. ft
Counted as Living Area: Yes

Heated: Yes
Finished: Yes
Enclosed: Yes
Contiguous: Yes
Permitted: Yes
Wet Space: No
Addition: No
Conversion: No

16 Floor 1 - Swimming Pool



Dimensions: 21'3" x 9'7"
Area: 181 sq. ft
Counted as Living Area: No

Heated: No
Finished: No
Enclosed: No
Contiguous: Yes
Permitted: No
Wet Space: No
Addition: No
Conversion: No

17 Floor 1 - Patio

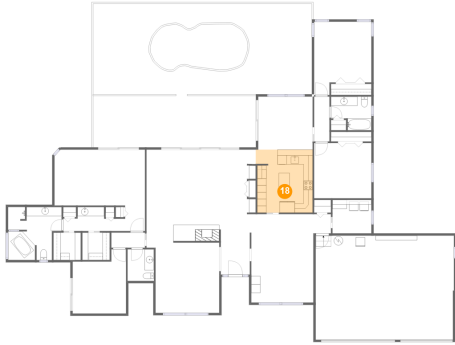


Dimensions: 47'10" x 19'9"
Area: 945 sq. ft
Counted as Living Area: No

Heated: No
Finished: Yes
Enclosed: No
Contiguous: Yes
Permitted: Yes
Wet Space: No
Addition: No
Conversion: No

1721 Saint Pauls Drive, Clearwater, Pinellas County, Florida, United States, 33764

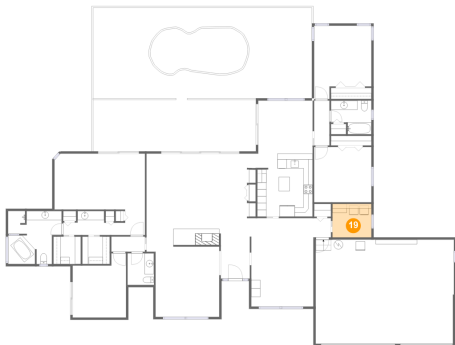
18 Floor 1 - Kitchen



Dimensions: 12'5" x 13'9"
Area: 167 sq. ft
Counted as Living Area:
Yes

Heated: Yes
Finished: Yes
Enclosed: Yes
Contiguous:
Yes
Permitted: Yes
Wet Space: No
Addition: No
Conversion: No

19 Floor 1 - Laundry



Dimensions: 8'6" x 7'4"
Area: 62 sq. ft
Counted as Living Area:
Yes

Heated: Yes
Finished: Yes
Enclosed: Yes
Contiguous:
Yes
Permitted: Yes
Wet Space: No
Addition: No
Conversion: No

20 Floor 1 - W.i.c.



Dimensions: 6'0" x 6'0"
Area: 36 sq. ft
Counted as Living Area:
Yes

Heated: Yes
Finished: Yes
Enclosed: Yes
Contiguous:
Yes
Permitted: Yes
Wet Space: No
Addition: No
Conversion: No

1721 Saint Pauls Drive, Clearwater, Pinellas County, Florida, United States, 33764

21 Floor 1 - Bath



Dimensions: 8'11" x 5'3"
Area: 39 sq. ft
Counted as Living Area:
Yes

Heated: Yes
Finished: Yes
Enclosed: Yes
Contiguous:
Yes
Permitted: Yes
Wet Space: Yes
Addition: No
Conversion: No

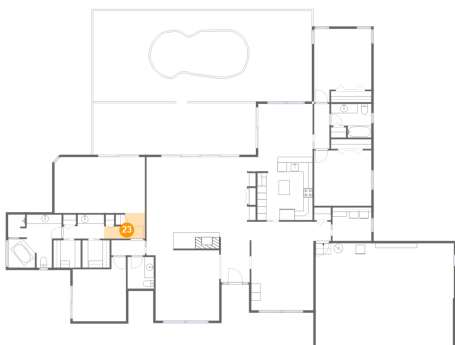
22 Floor 1 - Hall



Dimensions: 7'4" x 3'4"
Area: 24 sq. ft
Counted as Living Area:
Yes

Heated: Yes
Finished: Yes
Enclosed: Yes
Contiguous:
Yes
Permitted: Yes
Wet Space: No
Addition: No
Conversion: No

23 Floor 1 - Hall



Dimensions: 8'11" x 5'7"
Area: 37 sq. ft
Counted as Living Area:
Yes

Heated: Yes
Finished: Yes
Enclosed: Yes
Contiguous:
Yes
Permitted: Yes
Wet Space: No
Addition: No
Conversion: No

1721 Saint Pauls Drive, Clearwater, Pinellas County, Florida, United States, 33764

24 Floor 1 - Wc



Dimensions: 5'9" x 6'11"
Area: 40 sq. ft
Counted as Living Area:
Yes

Heated: Yes
Finished: Yes
Enclosed: Yes
Contiguous:
Yes
Permitted: Yes
Wet Space: Yes
Addition: No
Conversion: No