

Home report

1068 Upper Ln, Tory Hill, Haliburton County, Ontario, Canada,
K0L 2Y0




Total Area: 2996 sq. ft

Below Ground: 1397 sq. ft, Floor 2: 1599 sq. ft

Excluded: Utility 64 sq. ft, Balcony 85 sq. ft, Deck 493 sq. ft, Porch 79 sq. ft, Walls: 181 sq. ft

Property summary

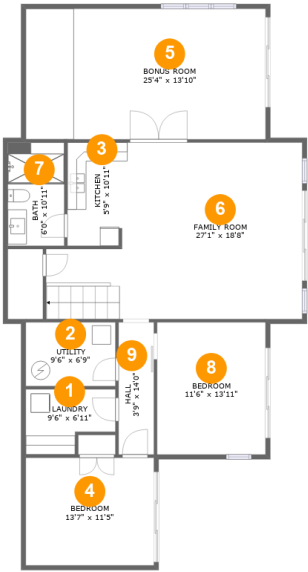
 2 Floors

 4 Bedrooms

 3 Bathrooms

Home report

1068 Upper Ln, Tory Hill, Haliburton County, Ontario, Canada,
K0L 2Y0



Room dimensions

Floor 1 Below ground Total:1397sqft Excluded: 64sqft

#		Max Dimensions	sqft	Included
1	Laundry	9'6" x 6'11"	55 sq. ft	Yes
2	Utility	9'6" x 6'9"	64 sq. ft	No
3	Kitchen	5'9" x 10'11"	62 sq. ft	Yes
4	Bedroom	13'7" x 11'5"	154 sq. ft	Yes
5	Bonus Room	25'4" x 13'10"	350 sq. ft	Yes
6	Family Room	27'1" x 18'8"	415 sq. ft	Yes
7	Bath	6'0" x 10'11"	65 sq. ft	Yes
8	Bedroom	11'6" x 13'11"	160 sq. ft	Yes
9	Hall	3'9" x 14'0"	52 sq. ft	Yes

Home report

1068 Upper Ln, Tory Hill, Haliburton County, Ontario, Canada,
K0L 2Y0



Room dimensions

Floor 2 Total:1599sqft Excluded: 657sqft

#		Max Dimensions	sqft	Included
10	Deck	20'1" x 38'1"	493 sq. ft	No
11	Sunroom	11'6" x 11'5"	131 sq. ft	Yes
12	Bath	10'4" x 5'8"	58 sq. ft	Yes
13	Bath	10'4" x 7'10"	67 sq. ft	Yes
14	Dining Area	11'10" x 14'4"	169 sq. ft	Yes
15	Hall	7'6" x 3'6"	25 sq. ft	Yes
16	Balcony	2'4" x 13'10"	85 sq. ft	No
17	Bedroom	12'2" x 11'0"	134 sq. ft	Yes
18	Kitchen	13'6" x 26'0"	329 sq. ft	Yes
19	Primary Bedroom	14'9" x 11'6"	164 sq. ft	Yes
20	Living Room	21'2" x 18'8"	439 sq. ft	Yes

Home report

1068 Upper Ln, Tory Hill, Haliburton County, Ontario, Canada,
K0L 2Y0

#		Max Dimensions	sqft	Included
21	Porch	14'1" x 5'7"	79 sq. ft	No

1068 Upper Ln, Tory Hill, Haliburton County, Ontario, Canada,
K0L 2Y0

1 Floor 1 - Laundry



Max Dimensions: 9'6" x 6'11"
Calculated Area: 55 sq. ft
Included: Yes

Heated: Yes
Finished: Yes
Enclosed: Yes
Contiguous: Yes
Permitted: Yes
Wet space: No
Addition: No
Conversion: No

2 Floor 1 - Utility



Max Dimensions: 9'6" x 6'9"
Calculated Area: 64 sq. ft
Included: No

Heated: Yes
Finished: No
Enclosed: Yes
Contiguous: Yes
Permitted: Yes
Wet space: No
Addition: No
Conversion: No

1068 Upper Ln, Tory Hill, Haliburton County, Ontario, Canada,
K0L 2Y0

3 Floor 1 - Kitchen



Max Dimensions: 5'9" x 10'11"
Calculated Area: 62 sq. ft
Included: Yes

Heated: Yes
Finished: Yes
Enclosed: Yes
Contiguous: Yes
Permitted: Yes
Wet space: No
Addition: No
Conversion: No

4 Floor 1 - Bedroom



Max Dimensions: 13'7" x 11'5"
Calculated Area: 154 sq. ft
Included: Yes

Heated: Yes
Finished: Yes
Enclosed: Yes
Contiguous: Yes
Permitted: Yes
Wet space: No
Addition: No
Conversion: No

5 Floor 1 - Bonus Room



Max Dimensions: 25'4" x 13'10"
Calculated Area: 350 sq. ft
Included: Yes

Heated: Yes
Finished: Yes
Enclosed: Yes
Contiguous: Yes
Permitted: Yes
Wet space: No
Addition: No
Conversion: No

1068 Upper Ln, Tory Hill, Haliburton County, Ontario, Canada,
K0L 2Y0

6 Floor 1 - Family Room



Max Dimensions: 27'1" x 18'8"
Calculated Area: 415 sq. ft
Included: Yes

Heated: Yes
Finished: Yes
Enclosed: Yes
Contiguous: Yes
Permitted: Yes
Wet space: No
Addition: No
Conversion: No

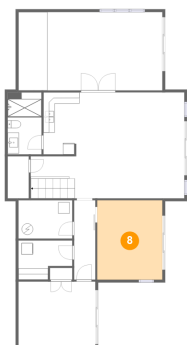
7 Floor 1 - Bath



Max Dimensions: 6'0" x 10'11"
Calculated Area: 65 sq. ft
Included: Yes

Heated: Yes
Finished: Yes
Enclosed: Yes
Contiguous: Yes
Permitted: Yes
Wet space: Yes
Addition: No
Conversion: No

8 Floor 1 - Bedroom



Max Dimensions: 11'6" x 13'11"
Calculated Area: 160 sq. ft
Included: Yes

Heated: Yes
Finished: Yes
Enclosed: Yes
Contiguous: Yes
Permitted: Yes
Wet space: No
Addition: No
Conversion: No

1068 Upper Ln, Tory Hill, Haliburton County, Ontario, Canada,
K0L 2Y0

9 Floor 1 - Hall



Max Dimensions: 3'9" x 14'0"
Calculated Area: 52 sq. ft
Included: Yes

Heated: Yes
Finished: Yes
Enclosed: Yes
Contiguous: Yes
Permitted: Yes
Wet space: No
Addition: No
Conversion: No

10 Floor 2 - Deck



Max Dimensions: 20'1" x 38'1"
Calculated Area: 493 sq. ft
Included: No

Heated: No
Finished: Yes
Enclosed: No
Contiguous: Yes
Permitted: Yes
Wet space: No
Addition: No
Conversion: No

11 Floor 2 - Sunroom



Max Dimensions: 11'6" x 11'5"
Calculated Area: 131 sq. ft
Included: Yes

Heated: Yes
Finished: Yes
Enclosed: Yes
Contiguous: Yes
Permitted: Yes
Wet space: No
Addition: No
Conversion: No

1068 Upper Ln, Tory Hill, Haliburton County, Ontario, Canada,
K0L 2Y0

12 Floor 2 - Bath



Max Dimensions: 10'4" x 5'8"
Calculated Area: 58 sq. ft
Included: Yes

Heated: Yes
Finished: Yes
Enclosed: Yes
Contiguous: Yes
Permitted: Yes
Wet space: Yes
Addition: No
Conversion: No

13 Floor 2 - Bath



Max Dimensions: 10'4" x 7'10"
Calculated Area: 67 sq. ft
Included: Yes

Heated: Yes
Finished: Yes
Enclosed: Yes
Contiguous: Yes
Permitted: Yes
Wet space: Yes
Addition: No
Conversion: No

14 Floor 2 - Dining Area



Max Dimensions: 11'10" x 14'4"
Calculated Area: 169 sq. ft
Included: Yes

Heated: Yes
Finished: Yes
Enclosed: Yes
Contiguous: Yes
Permitted: Yes
Wet space: No
Addition: No
Conversion: No

1068 Upper Ln, Tory Hill, Haliburton County, Ontario, Canada,
K0L 2Y0

15 Floor 2 - Hall



Max Dimensions: 7'6" x 3'6"
Calculated Area: 25 sq. ft
Included: Yes

Heated: Yes
Finished: Yes
Enclosed: Yes
Contiguous: Yes
Permitted: Yes
Wet space: No
Addition: No
Conversion: No

16 Floor 2 - Balcony



Max Dimensions: 2'4" x
13'10"
Calculated Area: 85 sq. ft
Included: No

Heated: No
Finished: Yes
Enclosed: No
Contiguous:
Yes
Permitted: Yes
Wet space: No
Addition: No
Conversion: No

17 Floor 2 - Bedroom



Max Dimensions: 12'2" x
11'0"
Calculated Area: 134 sq. ft
Included: Yes

Heated: Yes
Finished: Yes
Enclosed: Yes
Contiguous:
Yes
Permitted: Yes
Wet space: No
Addition: No
Conversion: No

1068 Upper Ln, Tory Hill, Haliburton County, Ontario, Canada,
K0L 2Y0

18 Floor 2 - Kitchen



Max Dimensions: 13'6" x 26'0"
Calculated Area: 329 sq. ft
Included: Yes

Heated: Yes
Finished: Yes
Enclosed: Yes
Contiguous: Yes
Permitted: Yes
Wet space: No
Addition: No
Conversion: No

19 Floor 2 - Primary Bedroom



Max Dimensions: 14'9" x 11'6"
Calculated Area: 164 sq. ft
Included: Yes

Heated: Yes
Finished: Yes
Enclosed: Yes
Contiguous: Yes
Permitted: Yes
Wet space: No
Addition: No
Conversion: No

20 Floor 2 - Living Room



Max Dimensions: 21'2" x 18'8"
Calculated Area: 439 sq. ft
Included: Yes

Heated: Yes
Finished: Yes
Enclosed: Yes
Contiguous: Yes
Permitted: Yes
Wet space: No
Addition: No
Conversion: No

1068 Upper Ln, Tory Hill, Haliburton County, Ontario, Canada,
K0L 2Y0

21 Floor 2 - Porch



Max Dimensions: 14'1" x 5'7"
Calculated Area: 79 sq. ft
Included: No

Heated: No
Finished: Yes
Enclosed: No
Contiguous: Yes
Permitted: Yes
Wet space: No
Addition: No
Conversion: No