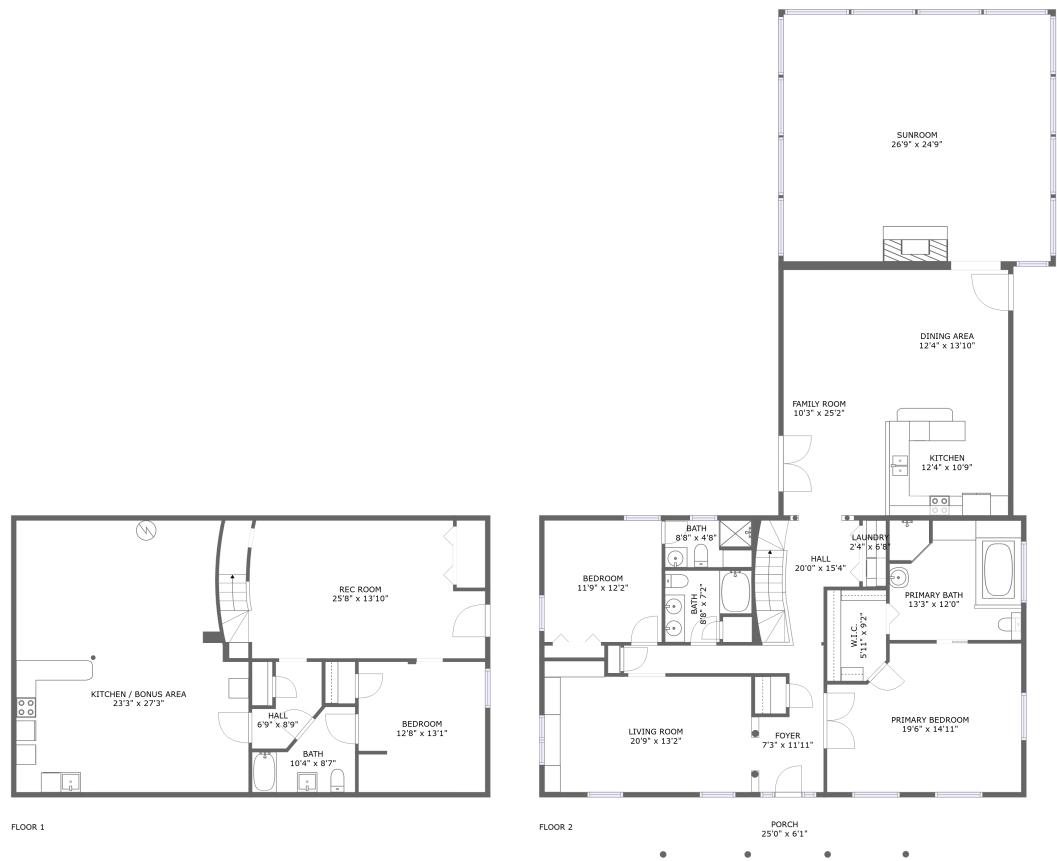


Home report

581 Ben Annie Road, Gretna, Pittsylvania County, Virginia,
United States, 24557



Total Area: 3414 sq. ft
Below Ground: 729 sq. ft, Floor 2: 2685 sq. ft
Excluded: Kitchen / Bonus Area 628 sq. ft, Outdoor Porch 152 sq. ft

Property summary

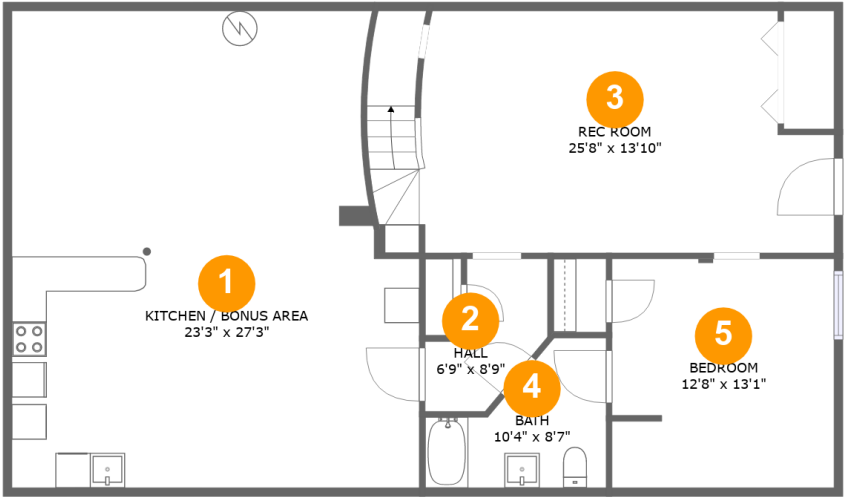
 **2** Floors

 **3** Bedrooms

 **4** Bathrooms

Home report

581 Ben Annie Road, Gretna, Pittsylvania County, Virginia,
United States, 24557



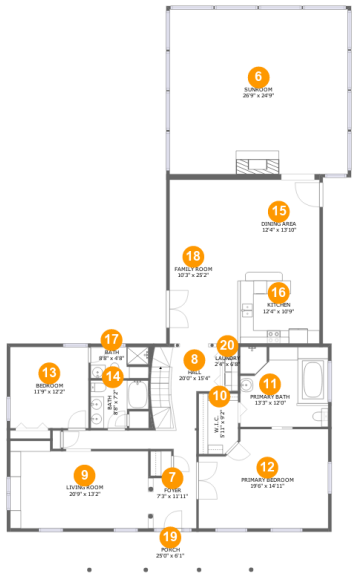
Room dimensions

Floor 1 Below ground Total:729sqft Excluded: 628sqft

#		Max Dimensions	sqft	Included
1	Kitchen / Bonus Area	23'3" x 27'3"	592 sq. ft	No
2	Hall	6'9" x 8'9"	42 sq. ft	Yes
3	Rec Room	25'8" x 13'10"	341 sq. ft	Yes
4	Bath	10'4" x 8'7"	64 sq. ft	Yes
5	Bedroom	12'8" x 13'1"	165 sq. ft	Yes

Home report

581 Ben Annie Road, Gretna, Pittsylvania County, Virginia,
United States, 24557



Room dimensions

Floor 2 Total:2685sqft Excluded: 152sqft

#		Max Dimensions	sqft	Included
6	Sunroom	26'9" x 24'9"	664 sq. ft	Yes
7	Foyer	7'3" x 11'11"	70 sq. ft	Yes
8	Hall	20'0" x 15'4"	163 sq. ft	Yes
9	Living Room	20'9" x 13'2"	250 sq. ft	Yes
10	W.I.C.	5'11" x 9'2"	52 sq. ft	Yes
11	Primary Bath	13'3" x 12'0"	157 sq. ft	Yes
12	Primary Bedroom	19'6" x 14'11"	268 sq. ft	Yes
13	Bedroom	11'9" x 12'2"	144 sq. ft	Yes
14	Bath	8'8" x 7'2"	53 sq. ft	Yes
15	Dining Area	12'4" x 13'10"	171 sq. ft	Yes
16	Kitchen	12'4" x 10'9"	132 sq. ft	Yes

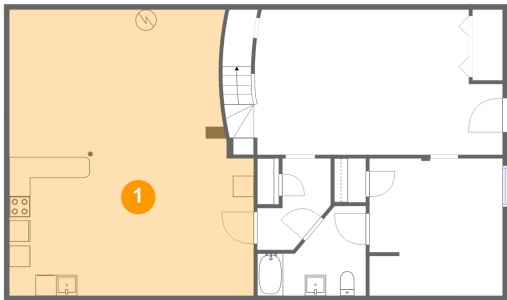
Home report

581 Ben Annie Road, Gretna, Pittsylvania County, Virginia,
United States, 24557

#		Max Dimensions	sqft	Included
17	Bath	8'8" x 4'8"	41 sq. ft	Yes
18	Family Room	10'3" x 25'2"	256 sq. ft	Yes
19	Porch	25'0" x 6'1"	152 sq. ft	No
20	Laundry	2'4" x 6'8"	16 sq. ft	Yes

581 Ben Annie Road, Gretna, Pittsylvania County, Virginia,
United States, 24557

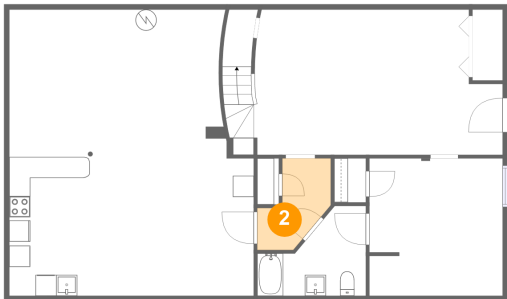
1 Floor 1 - Kitchen / Bonus Area



Max Dimensions: 23'3" x 27'3"
Calculated Area: 592 sq. ft
Included: No

Heated: Yes
Finished: No
Enclosed: Yes
Contiguous: Yes
Permitted: Yes
Wet space: No
Addition: No
Conversion: No

2 Floor 1 - Hall

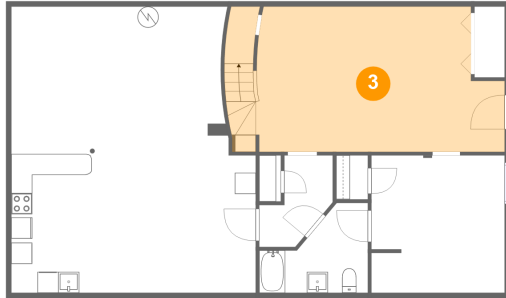


Max Dimensions: 6'9" x 8'9"
Calculated Area: 42 sq. ft
Included: Yes

Heated: Yes
Finished: Yes
Enclosed: Yes
Contiguous: Yes
Permitted: Yes
Wet space: No
Addition: No
Conversion: No

581 Ben Annie Road, Gretna, Pittsylvania County, Virginia,
United States, 24557

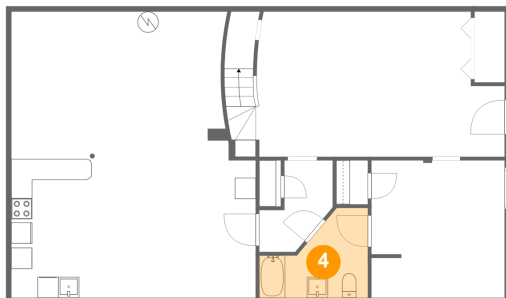
3 Floor 1 - Rec Room



Max Dimensions: 25'8" x 13'10"
Calculated Area: 341 sq. ft
Included: Yes

Heated: Yes
Finished: Yes
Enclosed: Yes
Contiguous: Yes
Permitted: Yes
Wet space: No
Addition: No
Conversion: No

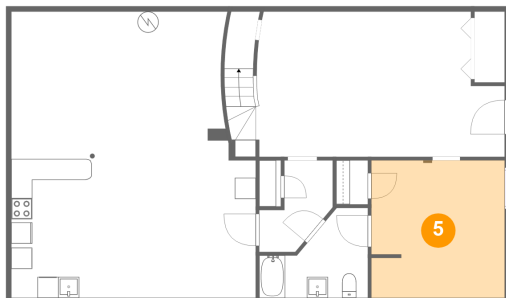
4 Floor 1 - Bath



Max Dimensions: 10'4" x 8'7"
Calculated Area: 64 sq. ft
Included: Yes

Heated: Yes
Finished: Yes
Enclosed: Yes
Contiguous: Yes
Permitted: Yes
Wet space: Yes
Addition: No
Conversion: No

5 Floor 1 - Bedroom



Max Dimensions: 12'8" x 13'1"
Calculated Area: 165 sq. ft
Included: Yes

Heated: Yes
Finished: Yes
Enclosed: Yes
Contiguous: Yes
Permitted: Yes
Wet space: No
Addition: No
Conversion: No

581 Ben Annie Road, Gretna, Pittsylvania County, Virginia,
United States, 24557

6 Floor 2 - Sunroom



Max Dimensions: 26'9" x 24'9"
Calculated Area: 664 sq. ft
Included: Yes

Heated: Yes
Finished: Yes
Enclosed: Yes
Contiguous: Yes
Permitted: Yes
Wet space: No
Addition: No
Conversion: No

7 Floor 2 - Foyer



Max Dimensions: 7'3" x 11'11"
Calculated Area: 70 sq. ft
Included: Yes

Heated: Yes
Finished: Yes
Enclosed: Yes
Contiguous: Yes
Permitted: Yes
Wet space: No
Addition: No
Conversion: No

8 Floor 2 - Hall

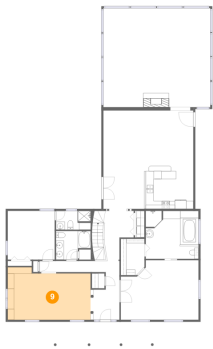


Max Dimensions: 20'0" x 15'4"
Calculated Area: 163 sq. ft
Included: Yes

Heated: Yes
Finished: Yes
Enclosed: Yes
Contiguous: Yes
Permitted: Yes
Wet space: No
Addition: No
Conversion: No

581 Ben Annie Road, Gretna, Pittsylvania County, Virginia,
United States, 24557

9 Floor 2 - Living Room



Max Dimensions: 20'9" x 13'2"
Calculated Area: 250 sq. ft
Included: Yes

Heated: Yes
Finished: Yes
Enclosed: Yes
Contiguous: Yes
Permitted: Yes
Wet space: No
Addition: No
Conversion: No

10 Floor 2 - W.I.C.



Max Dimensions: 5'11" x 9'2"
Calculated Area: 52 sq. ft
Included: Yes

Heated: Yes
Finished: Yes
Enclosed: Yes
Contiguous: Yes
Permitted: Yes
Wet space: No
Addition: No
Conversion: No

11 Floor 2 - Primary Bath



Max Dimensions: 13'3" x 12'0"
Calculated Area: 157 sq. ft
Included: Yes

Heated: Yes
Finished: Yes
Enclosed: Yes
Contiguous: Yes
Permitted: Yes
Wet space: Yes
Addition: No
Conversion: No

581 Ben Annie Road, Gretna, Pittsylvania County, Virginia,
United States, 24557

12 Floor 2 - Primary Bedroom



Max Dimensions: 19'6" x 14'11"
Calculated Area: 268 sq. ft
Included: Yes

Heated: Yes
Finished: Yes
Enclosed: Yes
Contiguous: Yes
Permitted: Yes
Wet space: No
Addition: No
Conversion: No

13 Floor 2 - Bedroom



Max Dimensions: 11'9" x 12'2"
Calculated Area: 144 sq. ft
Included: Yes

Heated: Yes
Finished: Yes
Enclosed: Yes
Contiguous: Yes
Permitted: Yes
Wet space: No
Addition: No
Conversion: No

14 Floor 2 - Bath



Max Dimensions: 8'8" x 7'2"
Calculated Area: 53 sq. ft
Included: Yes

Heated: Yes
Finished: Yes
Enclosed: Yes
Contiguous: Yes
Permitted: Yes
Wet space: Yes
Addition: No
Conversion: No

581 Ben Annie Road, Gretna, Pittsylvania County, Virginia,
United States, 24557

15 Floor 2 - Dining Area



Max Dimensions: 12'4" x 13'10"
Calculated Area: 171 sq. ft
Included: Yes

Heated: Yes
Finished: Yes
Enclosed: Yes
Contiguous: Yes
Permitted: Yes
Wet space: No
Addition: No
Conversion: No

16 Floor 2 - Kitchen



Max Dimensions: 12'4" x 10'9"
Calculated Area: 132 sq. ft
Included: Yes

Heated: Yes
Finished: Yes
Enclosed: Yes
Contiguous: Yes
Permitted: Yes
Wet space: No
Addition: No
Conversion: No

17 Floor 2 - Bath



Max Dimensions: 8'8" x 4'8"
Calculated Area: 41 sq. ft
Included: Yes

Heated: Yes
Finished: Yes
Enclosed: Yes
Contiguous: Yes
Permitted: Yes
Wet space: Yes
Addition: No
Conversion: No

581 Ben Annie Road, Gretna, Pittsylvania County, Virginia,
United States, 24557

18 Floor 2 - Family Room



Max Dimensions: 10'3" x 25'2"
Calculated Area: 256 sq. ft
Included: Yes

Heated: Yes
Finished: Yes
Enclosed: Yes
Contiguous: Yes
Permitted: Yes
Wet space: No
Addition: No
Conversion: No

19 Floor 2 - Porch



Max Dimensions: 25'0" x 6'1"
Calculated Area: 152 sq. ft
Included: No

Heated: No
Finished: Yes
Enclosed: No
Contiguous: Yes
Permitted: Yes
Wet space: No
Addition: No
Conversion: No

20 Floor 2 - Laundry



Max Dimensions: 2'4" x 6'8"
Calculated Area: 16 sq. ft
Included: Yes

Heated: Yes
Finished: Yes
Enclosed: Yes
Contiguous: Yes
Permitted: Yes
Wet space: No
Addition: No
Conversion: No