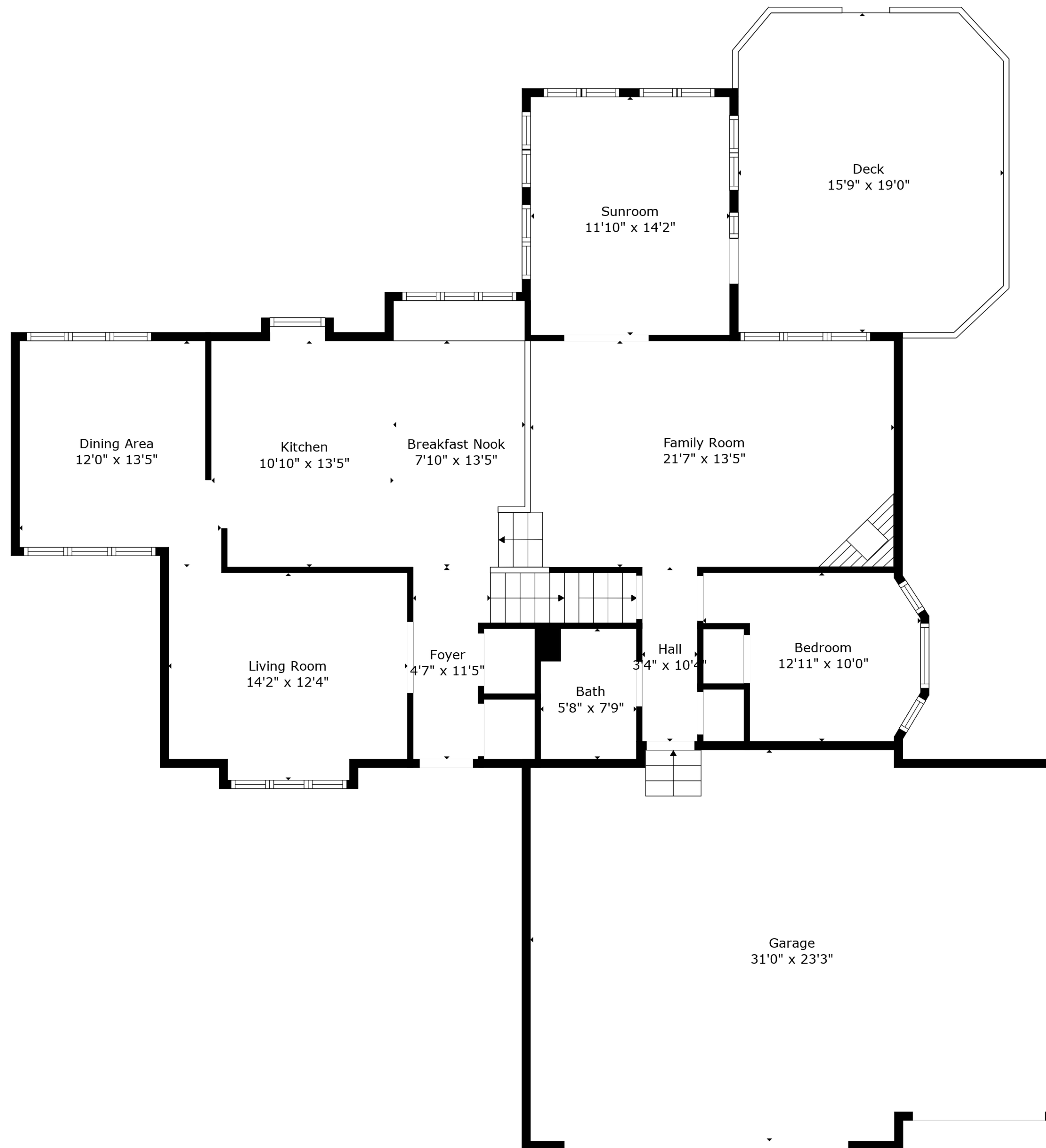


TOTAL: 2636 sq. ft

BELOW GROUND: 566 sq. ft, FLOOR 2: 1380 sq. ft, FLOOR 3: 690 sq. ft
EXCLUDED AREAS: STORAGE: 48 sq. ft, BASEMENT: 474 sq. ft, DECK: 290 sq. ft,
GARAGE: 688 sq. ft, BAY WINDOW: 4 sq. ft, LOW CEILING: 8 sq. ft

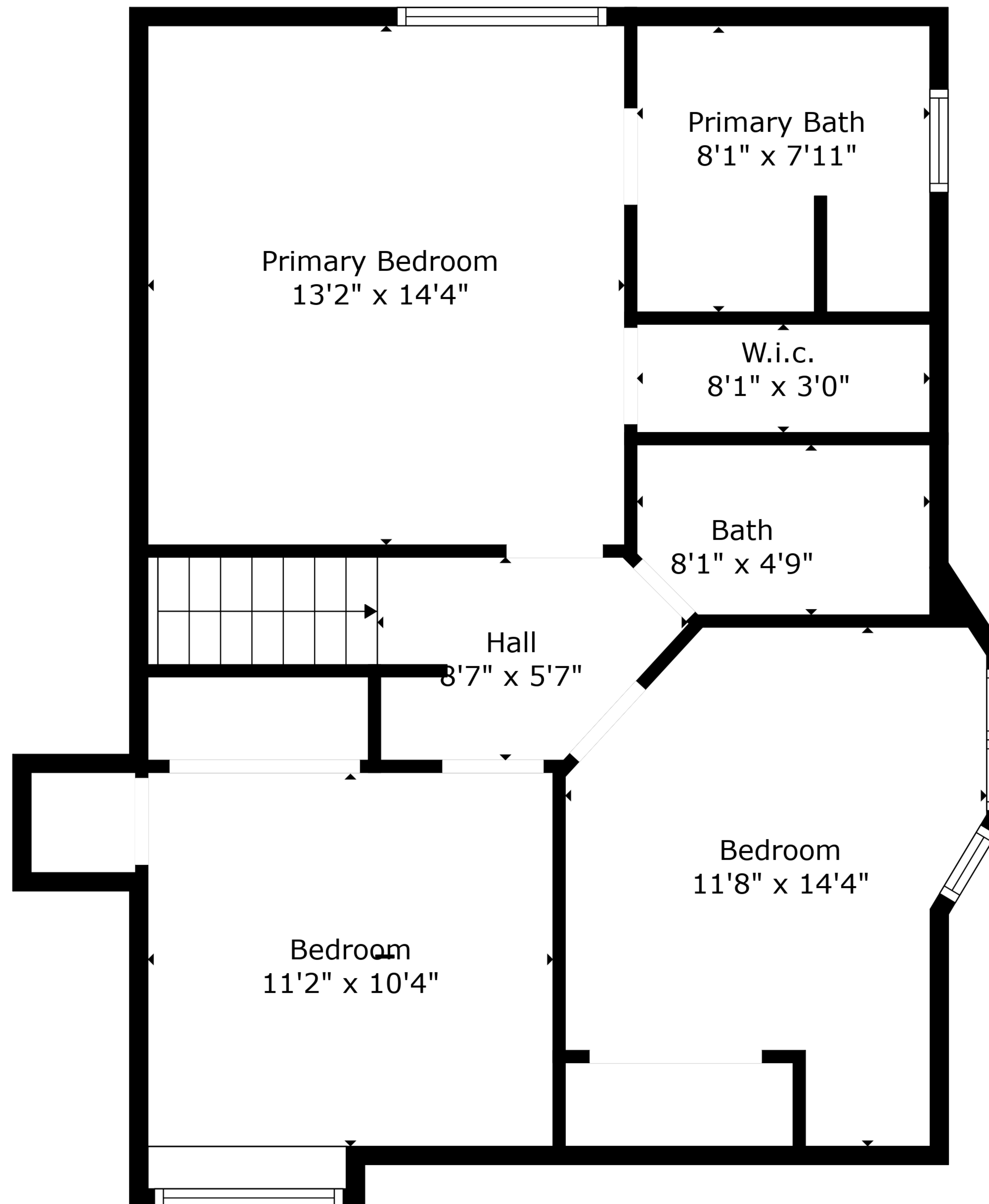
Created By Nordy Photography. Calculations Deemed Highly Reliable But Not Guaranteed.



TOTAL: 2636 sq. ft

BELOW GROUND: 566 sq. ft, FLOOR 2: 1380 sq. ft, FLOOR 3: 690 sq. ft
 EXCLUDED AREAS: STORAGE: 48 sq. ft, BASEMENT: 474 sq. ft, DECK: 290 sq. ft,
 GARAGE: 688 sq. ft, BAY WINDOW: 4 sq. ft, LOW CEILING: 8 sq. ft

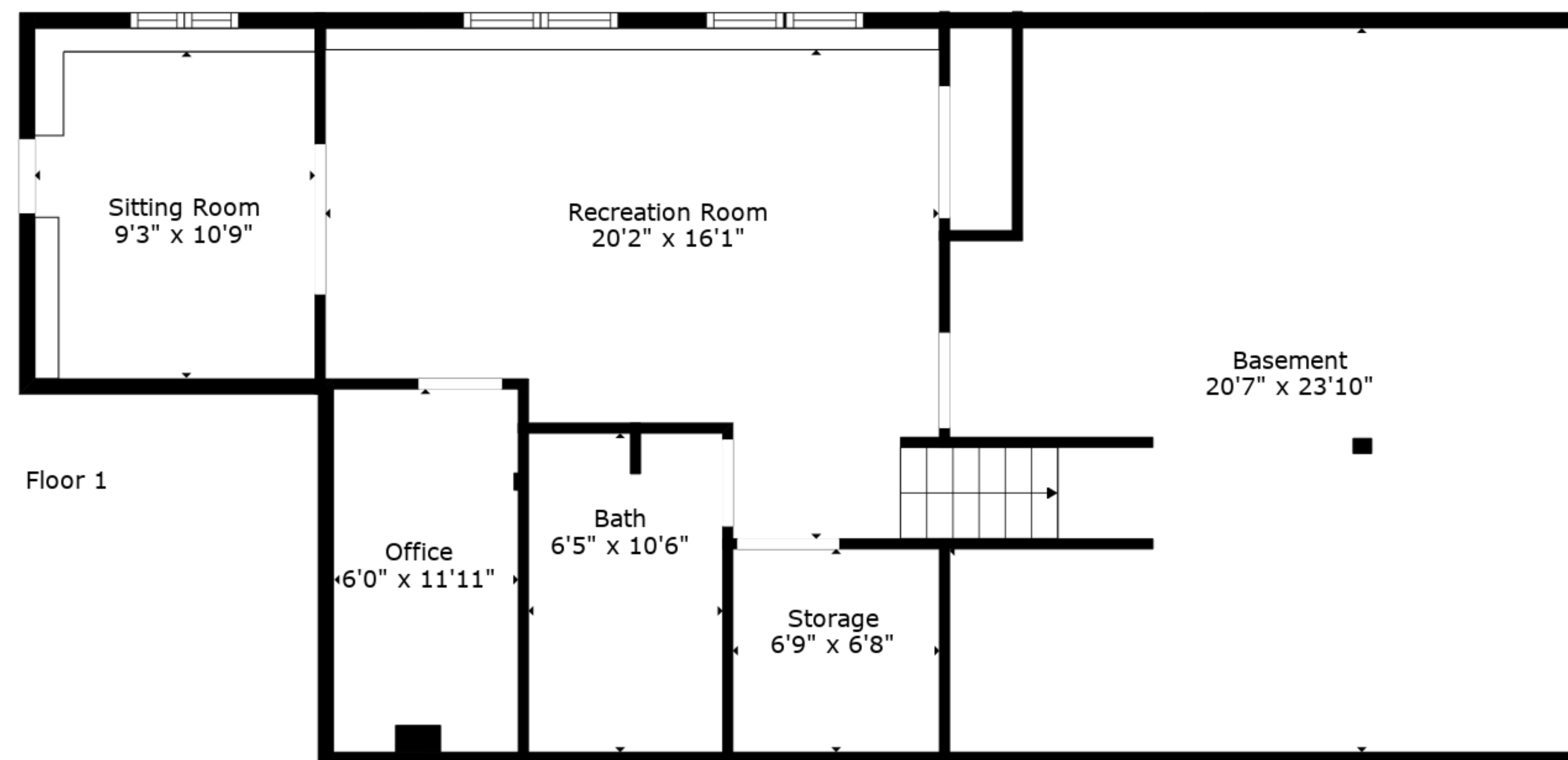
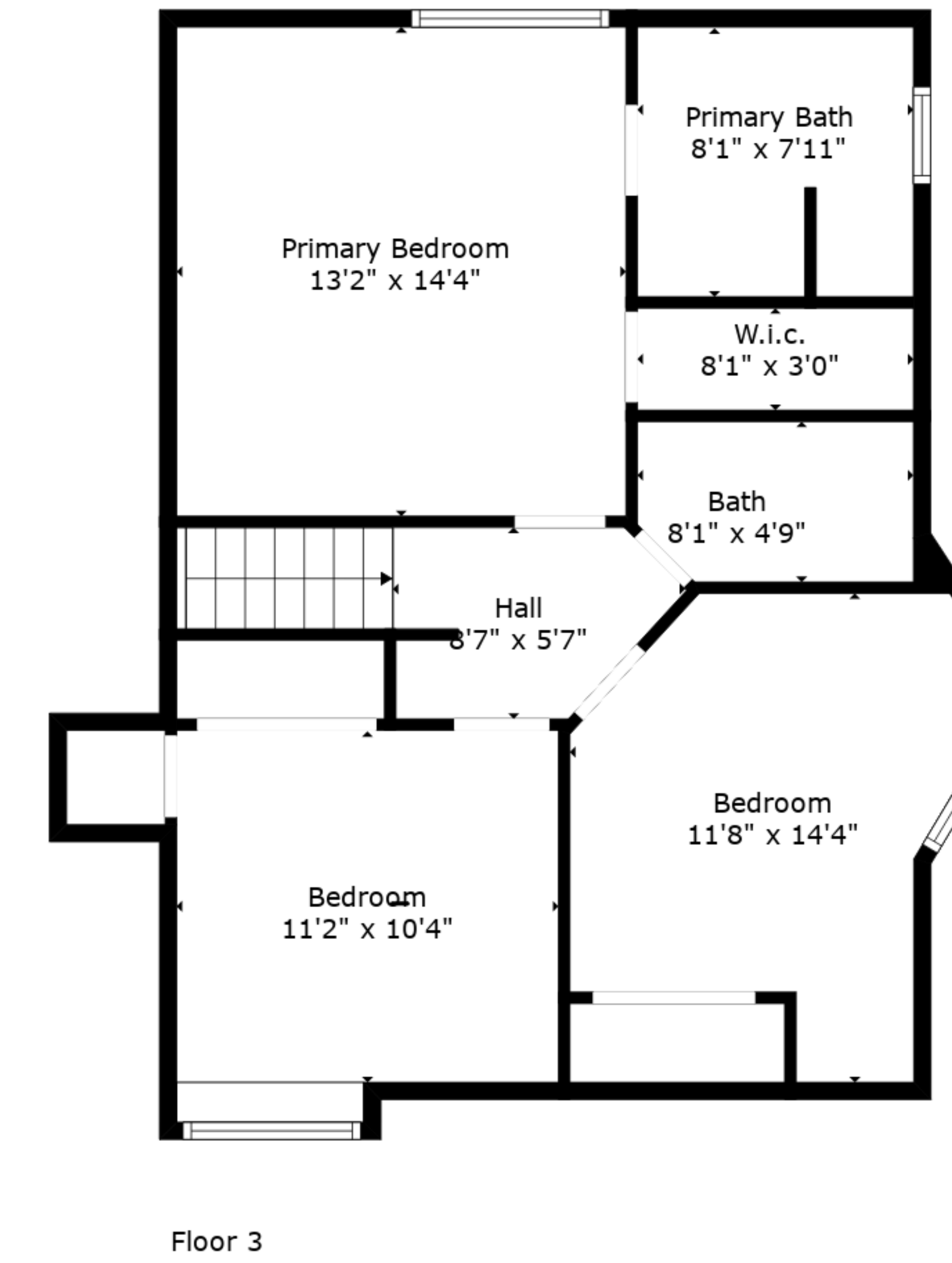
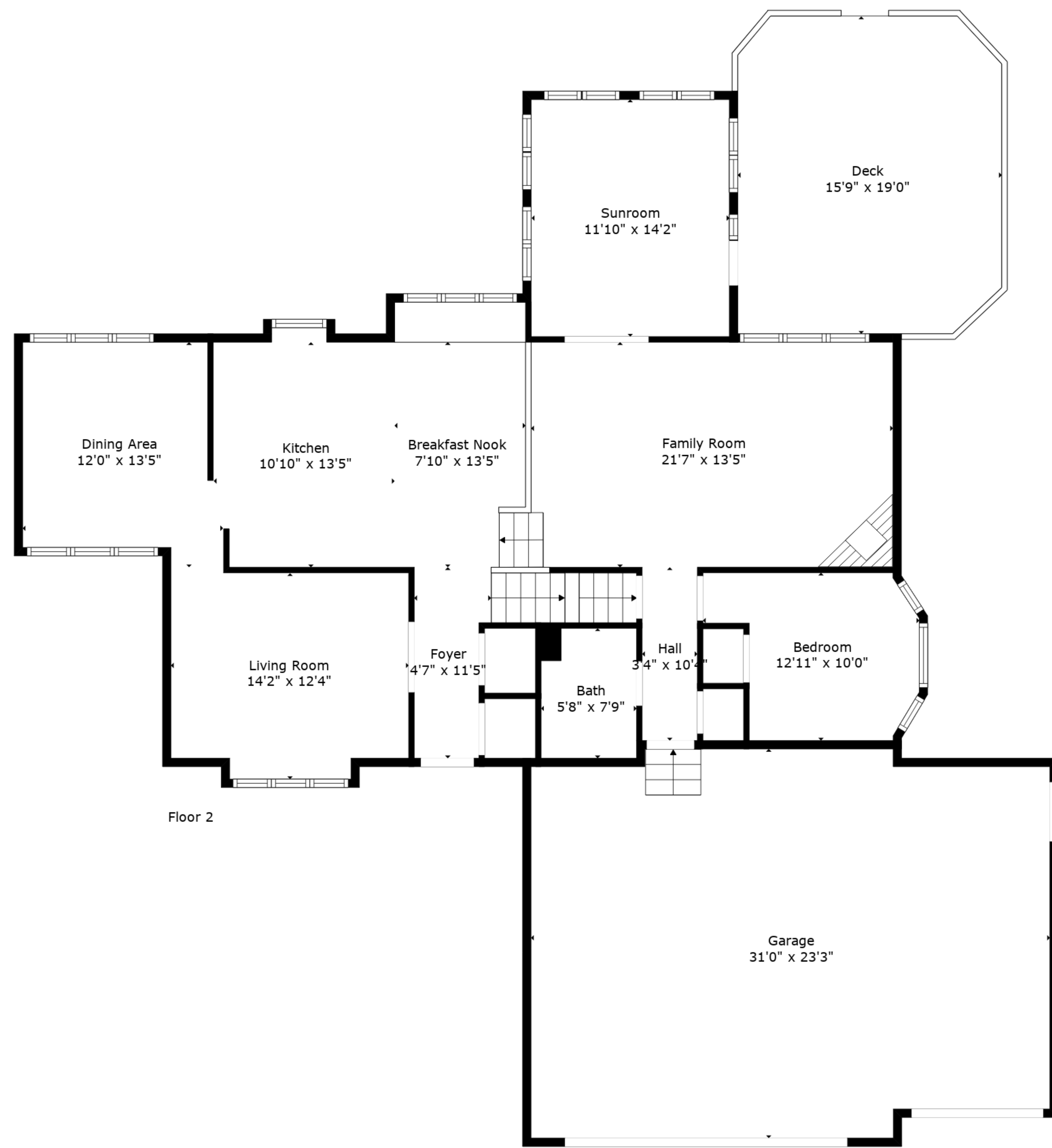
Created By Nordy Photography. Calculations Deemed Highly Reliable But Not Guaranteed.



TOTAL: 2636 sq. ft

BELOW GROUND: 566 sq. ft, FLOOR 2: 1380 sq. ft, FLOOR 3: 690 sq. ft
 EXCLUDED AREAS: STORAGE: 48 sq. ft, BASEMENT: 474 sq. ft, DECK: 290 sq. ft,
 GARAGE: 688 sq. ft, BAY WINDOW: 4 sq. ft, LOW CEILING: 8 sq. ft

Created By Nordy Photography. Calculations Deemed Highly Reliable But Not Guaranteed.



TOTAL: 2636 sq. ft

BELOW GROUND: 566 sq. ft, FLOOR 2: 1380 sq. ft, FLOOR 3: 690 sq. ft
 EXCLUDED AREAS: STORAGE: 48 sq. ft, BASEMENT: 474 sq. ft, DECK: 290 sq. ft,
 GARAGE: 688 sq. ft, BAY WINDOW: 4 sq. ft, LOW CEILING: 8 sq. ft

Created By Nordy Photography. Calculations Deemed Highly Reliable But Not Guaranteed.