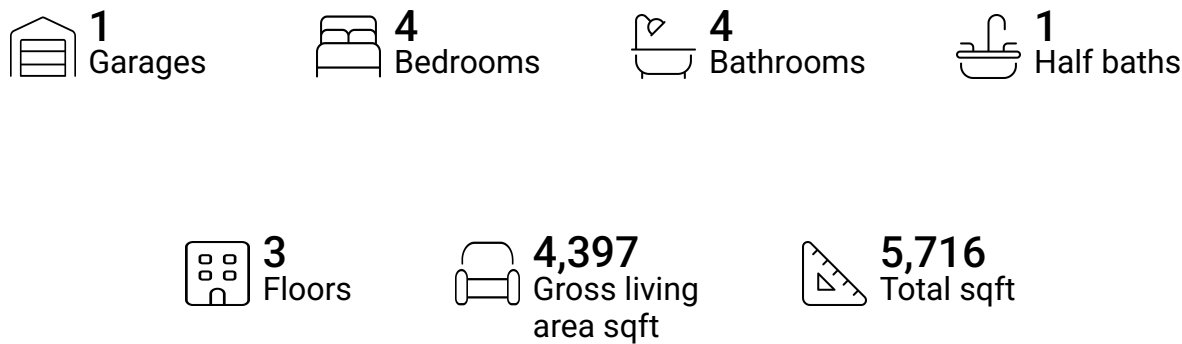


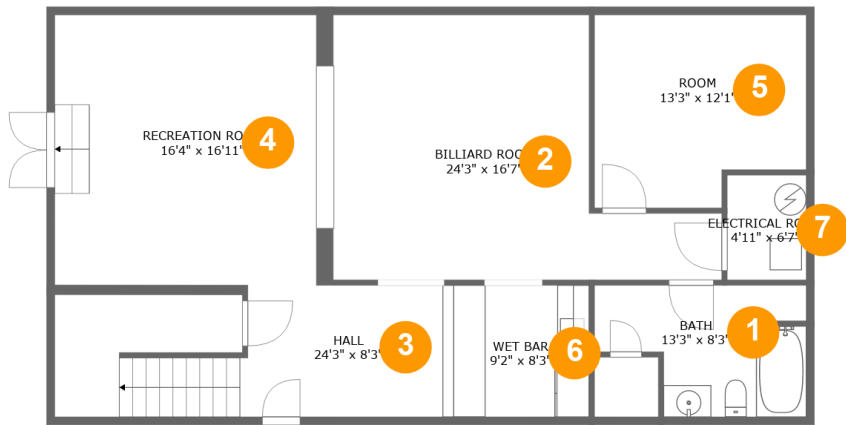
152 Southwind Cir, Pierpont, Morgantown,
Monongalia County, West Virginia, United States,



Property summary



152 Southwind Cir, Pierpont, Morgantown,
Monongalia County, West Virginia, United States,



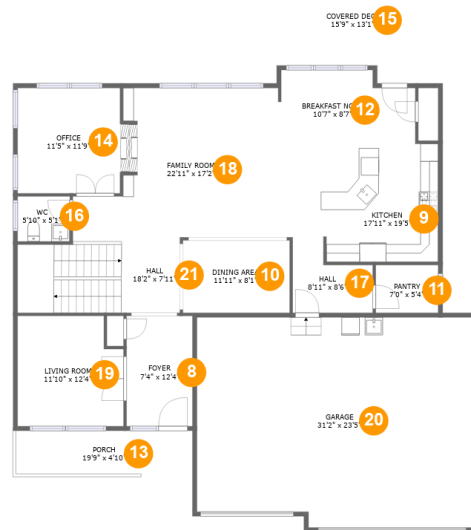
Room dimensions

Floor 1

Total sqft: 1254 Living area: 1218

#		Dimensions	sqft	Counted as living area
1	Bath	13'3" x 8'3"	90 sq. ft	Yes
2	Billiard Room	24'3" x 16'7"	300 sq. ft	Yes
3	Hall	24'3" x 8'3"	189 sq. ft	Yes
4	Recreation Room	16'4" x 16'11"	288 sq. ft	Yes
5	Room	13'3" x 12'1"	147 sq. ft	Yes
6	Wet Bar	9'2" x 8'3"	75 sq. ft	Yes
7	Electrical Room	4'11" x 6'7"	32 sq. ft	No

152 Southwind Cir, Pierpont, Morgantown, Monongalia County, West Virginia, United States,



Room dimensions

Floor 2

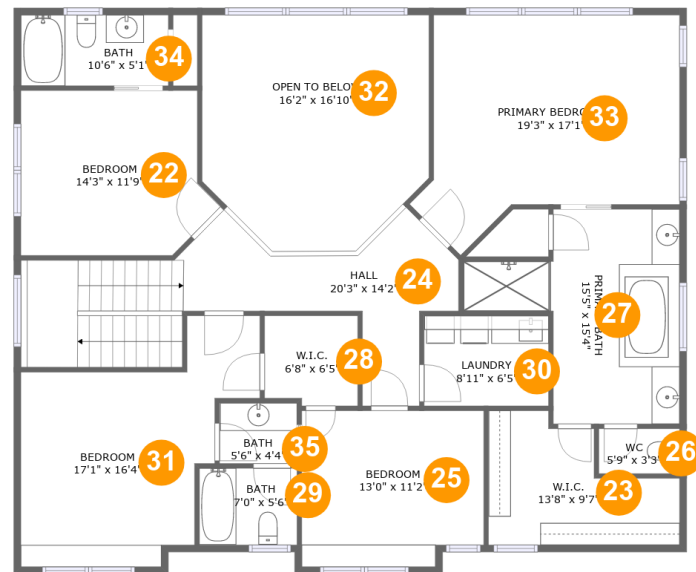
Total sqft: 2565 Living area: 1537

#		Dimensions	sqft	Counted as living area
8	Foyer	7'4" x 12'4"	91 sq. ft	Yes
9	Kitchen	17'11" x 19'5"	246 sq. ft	Yes
10	Dining Area	11'11" x 8'1"	97 sq. ft	Yes
11	Pantry	7'0" x 5'4"	37 sq. ft	Yes
12	Breakfast Nook	10'7" x 8'7"	90 sq. ft	Yes
13	Porch	19'9" x 4'10"	95 sq. ft	No
14	Office	11'5" x 11'9"	135 sq. ft	Yes
15	Covered Deck	15'9" x 13'1"	185 sq. ft	No
16	WC	5'10" x 5'1"	29 sq. ft	Yes
17	Hall	8'11" x 8'6"	59 sq. ft	Yes
18	Family Room	22'11" x 17'2"	322 sq. ft	Yes

**152 Southwind Cir, Pierpont, Morgantown,
Monongalia County, West Virginia, United States,**

#		Dimensions	sqft	Counted as living area
19	Living Room	11'10" x 12'4"	138 sq. ft	Yes
20	Garage	31'2" x 23'5"	712 sq. ft	No
21	Hall	18'2" x 7'11"	142 sq. ft	Yes

152 Southwind Cir, Pierpont, Morgantown, Monongalia County, West Virginia, United States,



Room dimensions

Floor 3

Total sqft: 1897 Living area: 1642

#		Dimensions	sqft	Counted as living area
22	Bedroom	14'3" x 11'9"	149 sq. ft	Yes
23	W.I.C.	13'8" x 9'7"	97 sq. ft	Yes
24	Hall	20'3" x 14'2"	221 sq. ft	Yes
25	Bedroom	13'0" x 11'2"	140 sq. ft	Yes
26	WC	5'9" x 3'3"	19 sq. ft	Yes
27	Primary Bath	15'5" x 15'4"	161 sq. ft	Yes
28	W.I.C.	6'8" x 6'5"	41 sq. ft	Yes
29	Bath	7'0" x 5'6"	38 sq. ft	Yes
30	Laundry	8'11" x 6'5"	57 sq. ft	Yes
31	Bedroom	17'1" x 16'4"	205 sq. ft	Yes
32	Open To Below	16'2" x 16'10"	247 sq. ft	No

**152 Southwind Cir, Pierpont, Morgantown,
Monongalia County, West Virginia, United States,**

#		Dimensions	sqft	Counted as living area
33	Primary Bedroom	19'3" x 17'1"	252 sq. ft	Yes
34	Bath	10'6" x 5'1"	53 sq. ft	Yes
35	Bath	5'6" x 4'4"	24 sq. ft	Yes

152 Southwind Cir, Pierpont, Morgantown,
Monongalia County, West Virginia, United States,

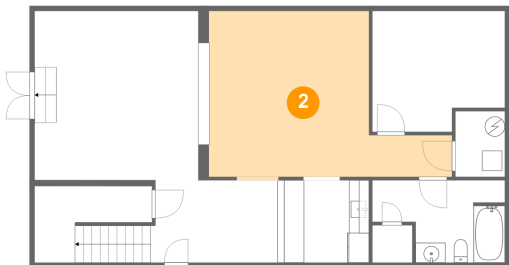
1 Floor 1 - Bath



Dimensions: 13'3" x 8'3"
Area: 90 sq. ft
Counted as living area: Yes

Heated: Yes
Finished: Yes
Enclosed: Yes
Contiguous: Yes
Permitted: Yes
Wet space: Yes
Addition: No
Conversion: No

2 Floor 1 - Billiard Room



Dimensions: 24'3" x 16'7"
Area: 300 sq. ft
Counted as living area: Yes

Heated: Yes
Finished: Yes
Enclosed: Yes
Contiguous: Yes
Permitted: Yes
Wet space: No
Addition: No
Conversion: No

152 Southwind Cir, Pierpont, Morgantown, Monongalia County, West Virginia, United States,

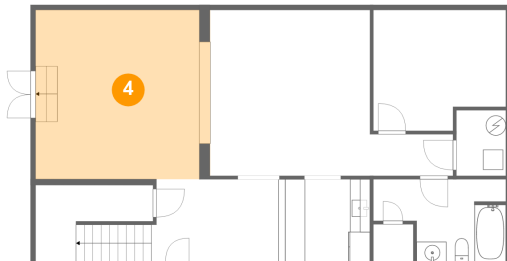
3 Floor 1 - Hall



Dimensions: 24'3" x 8'3"
Area: 189 sq. ft
Counted as living area: Yes

Heated: Yes
Finished: Yes
Enclosed: Yes
Contiguous: Yes
Permitted: Yes
Wet space: No
Addition: No
Conversion: No

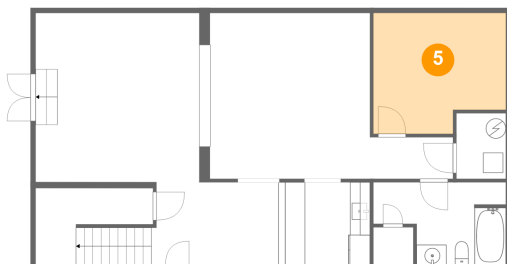
4 Floor 1 - Recreation Room



Dimensions: 16'4" x 16'11"
Area: 288 sq. ft
Counted as living area: Yes

Heated: Yes
Finished: Yes
Enclosed: Yes
Contiguous: Yes
Permitted: Yes
Wet space: No
Addition: No
Conversion: No

5 Floor 1 - Room

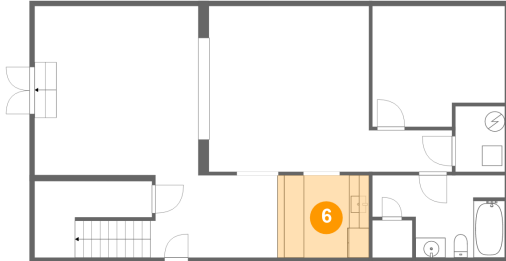


Dimensions: 13'3" x 12'1"
Area: 147 sq. ft
Counted as living area: Yes

Heated: Yes
Finished: Yes
Enclosed: Yes
Contiguous: Yes
Permitted: Yes
Wet space: No
Addition: No
Conversion: No

152 Southwind Cir, Pierpont, Morgantown, Monongalia County, West Virginia, United States,

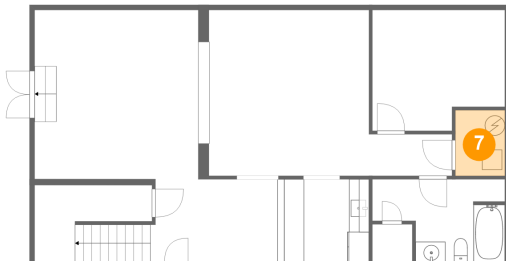
6 Floor 1 - Wet Bar



Dimensions: 9'2" x 8'3"
Area: 75 sq. ft
Counted as living area: Yes

Heated: Yes
Finished: Yes
Enclosed: Yes
Contiguous: Yes
Permitted: Yes
Wet space: No
Addition: No
Conversion: No

7 Floor 1 - Electrical Room



Dimensions: 4'11" x 6'7"
Area: 32 sq. ft
Counted as living area: No

Heated: No
Finished: No
Enclosed: Yes
Contiguous: Yes
Permitted: Yes
Wet space: No
Addition: No
Conversion: No

8 Floor 2 - Foyer



Dimensions: 7'4" x 12'4"
Area: 91 sq. ft
Counted as living area: Yes

Heated: Yes
Finished: Yes
Enclosed: Yes
Contiguous: Yes
Permitted: Yes
Wet space: No
Addition: No
Conversion: No

152 Southwind Cir, Pierpont, Morgantown, Monongalia County, West Virginia, United States,

9 Floor 2 - Kitchen



Dimensions: 17'11" x 19'5"
Area: 246 sq. ft
Counted as living area: Yes

Heated: Yes
Finished: Yes
Enclosed: Yes
Contiguous: Yes
Permitted: Yes
Wet space: No
Addition: No
Conversion: No

10 Floor 2 - Dining Area



Dimensions: 11'11" x 8'1"
Area: 97 sq. ft
Counted as living area: Yes

Heated: Yes
Finished: Yes
Enclosed: Yes
Contiguous: Yes
Permitted: Yes
Wet space: No
Addition: No
Conversion: No

11 Floor 2 - Pantry



Dimensions: 7'0" x 5'4"
Area: 37 sq. ft
Counted as living area: Yes

Heated: Yes
Finished: Yes
Enclosed: Yes
Contiguous: Yes
Permitted: Yes
Wet space: No
Addition: No
Conversion: No

152 Southwind Cir, Pierpont, Morgantown, Monongalia County, West Virginia, United States,

12 Floor 2 - Breakfast Nook



Dimensions: 10'7" x 8'7"
Area: 90 sq. ft
Counted as living area: Yes

Heated: Yes
Finished: Yes
Enclosed: Yes
Contiguous: Yes
Permitted: Yes
Wet space: No
Addition: No
Conversion: No

13 Floor 2 - Porch



Dimensions: 19'9" x 4'10"
Area: 95 sq. ft
Counted as living area: No

Heated: No
Finished: Yes
Enclosed: No
Contiguous: Yes
Permitted: Yes
Wet space: No
Addition: No
Conversion: No

14 Floor 2 - Office

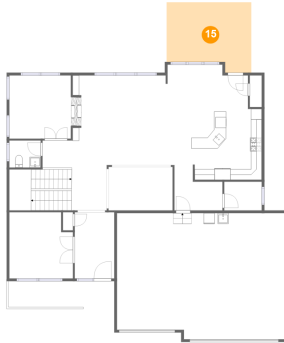


Dimensions: 11'5" x 11'9"
Area: 135 sq. ft
Counted as living area: Yes

Heated: Yes
Finished: Yes
Enclosed: Yes
Contiguous: Yes
Permitted: Yes
Wet space: No
Addition: No
Conversion: No

152 Southwind Cir, Pierpont, Morgantown, Monongalia County, West Virginia, United States,

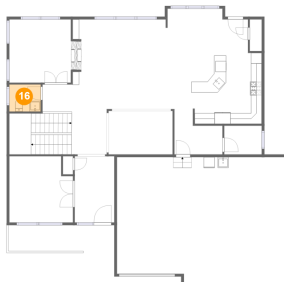
15 Floor 2 - Covered Deck



Dimensions: 15'9" x 13'1"
Area: 185 sq. ft
Counted as living area: No

Heated: No
Finished: Yes
Enclosed: No
Contiguous: Yes
Permitted: Yes
Wet space: No
Addition: No
Conversion: No

16 Floor 2 - WC



Dimensions: 5'10" x 5'1"
Area: 29 sq. ft
Counted as living area: Yes

Heated: Yes
Finished: Yes
Enclosed: Yes
Contiguous: Yes
Permitted: Yes
Wet space: Yes
Addition: No
Conversion: No

17 Floor 2 - Hall



Dimensions: 8'11" x 8'6"
Area: 59 sq. ft
Counted as living area: Yes

Heated: Yes
Finished: Yes
Enclosed: Yes
Contiguous: Yes
Permitted: Yes
Wet space: No
Addition: No
Conversion: No

152 Southwind Cir, Pierpont, Morgantown, Monongalia County, West Virginia, United States,

18 Floor 2 - Family Room



Dimensions: 22'11" x 17'2"
Area: 322 sq. ft
Counted as living area: Yes

Heated: Yes
Finished: Yes
Enclosed: Yes
Contiguous: Yes
Permitted: Yes
Wet space: No
Addition: No
Conversion: No

19 Floor 2 - Living Room



Dimensions: 11'10" x 12'4"
Area: 138 sq. ft
Counted as living area: Yes

Heated: Yes
Finished: Yes
Enclosed: Yes
Contiguous: Yes
Permitted: Yes
Wet space: No
Addition: No
Conversion: No

20 Floor 2 - Garage



Dimensions: 31'2" x 23'5"
Area: 712 sq. ft
Counted as living area: No

Heated: No
Finished: No
Enclosed: Yes
Contiguous: Yes
Permitted: Yes
Wet space: No
Addition: No
Conversion: No

152 Southwind Cir, Pierpont, Morgantown, Monongalia County, West Virginia, United States,

21 Floor 2 - Hall



Dimensions: 18'2" x 7'11"
Area: 142 sq. ft
Counted as living area: Yes

Heated: Yes
Finished: Yes
Enclosed: Yes
Contiguous: Yes
Permitted: Yes
Wet space: No
Addition: No
Conversion: No

22 Floor 3 - Bedroom



Dimensions: 14'3" x 11'9"
Area: 149 sq. ft
Counted as living area: Yes

Heated: Yes
Finished: Yes
Enclosed: Yes
Contiguous: Yes
Permitted: Yes
Wet space: No
Addition: No
Conversion: No

23 Floor 3 - W.I.C.



Dimensions: 13'8" x 9'7"
Area: 97 sq. ft
Counted as living area: Yes

Heated: Yes
Finished: Yes
Enclosed: Yes
Contiguous: Yes
Permitted: Yes
Wet space: No
Addition: No
Conversion: No

152 Southwind Cir, Pierpont, Morgantown, Monongalia County, West Virginia, United States,

24 Floor 3 - Hall



Dimensions: 20'3" x 14'2"
Area: 221 sq. ft
Counted as living area: Yes

Heated: Yes
Finished: Yes
Enclosed: Yes
Contiguous: Yes
Permitted: Yes
Wet space: No
Addition: No
Conversion: No

25 Floor 3 - Bedroom



Dimensions: 13'0" x 11'2"
Area: 140 sq. ft
Counted as living area: Yes

Heated: Yes
Finished: Yes
Enclosed: Yes
Contiguous: Yes
Permitted: Yes
Wet space: No
Addition: No
Conversion: No

26 Floor 3 - WC



Dimensions: 5'9" x 3'3"
Area: 19 sq. ft
Counted as living area: Yes

Heated: Yes
Finished: Yes
Enclosed: Yes
Contiguous: Yes
Permitted: Yes
Wet space: Yes
Addition: No
Conversion: No

152 Southwind Cir, Pierpont, Morgantown, Monongalia County, West Virginia, United States,

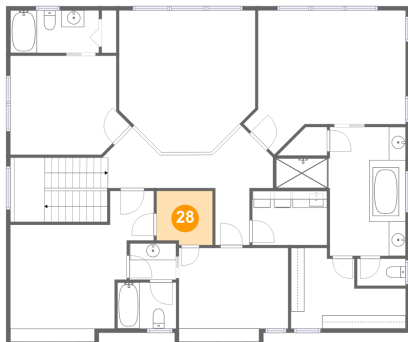
27 Floor 3 - Primary Bath



Dimensions: 15'5" x 15'4"
Area: 161 sq. ft
Counted as living area: Yes

Heated: Yes
Finished: Yes
Enclosed: Yes
Contiguous: Yes
Permitted: Yes
Wet space: Yes
Addition: No
Conversion: No

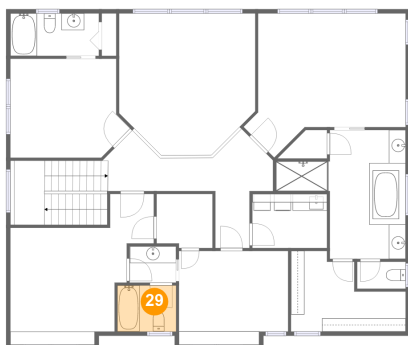
28 Floor 3 - W.I.C.



Dimensions: 6'8" x 6'5"
Area: 41 sq. ft
Counted as living area: Yes

Heated: Yes
Finished: Yes
Enclosed: Yes
Contiguous: Yes
Permitted: Yes
Wet space: No
Addition: No
Conversion: No

29 Floor 3 - Bath

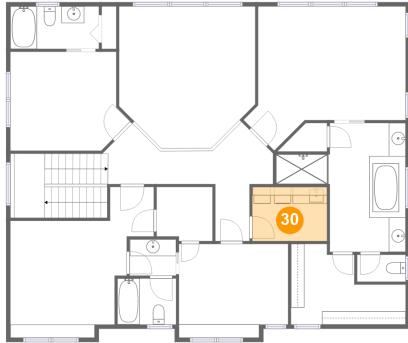


Dimensions: 7'0" x 5'6"
Area: 38 sq. ft
Counted as living area: Yes

Heated: Yes
Finished: Yes
Enclosed: Yes
Contiguous: Yes
Permitted: Yes
Wet space: Yes
Addition: No
Conversion: No

152 Southwind Cir, Pierpont, Morgantown, Monongalia County, West Virginia, United States,

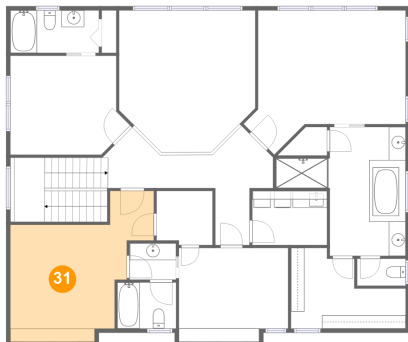
30 Floor 3 - Laundry



Dimensions: 8'11" x 6'5"
Area: 57 sq. ft
Counted as living area: Yes

Heated: Yes
Finished: Yes
Enclosed: Yes
Contiguous: Yes
Permitted: Yes
Wet space: No
Addition: No
Conversion: No

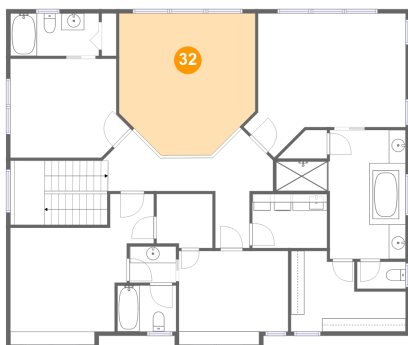
31 Floor 3 - Bedroom



Dimensions: 17'1" x 16'4"
Area: 205 sq. ft
Counted as living area: Yes

Heated: Yes
Finished: Yes
Enclosed: Yes
Contiguous: Yes
Permitted: Yes
Wet space: No
Addition: No
Conversion: No

32 Floor 3 - Open To Below



Dimensions: 16'2" x 16'10"
Area: 247 sq. ft
Counted as living area: No

Heated: No
Finished: No
Enclosed: No
Contiguous: Yes
Permitted: No
Wet space: No
Addition: No
Conversion: No

152 Southwind Cir, Pierpont, Morgantown, Monongalia County, West Virginia, United States,

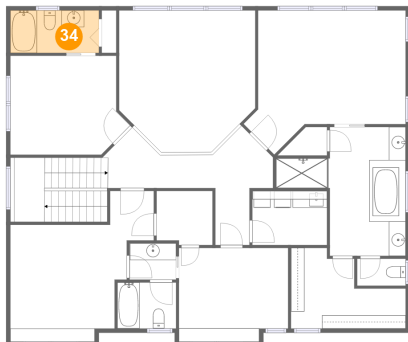
33 Floor 3 - Primary Bedroom



Dimensions: 19'3" x 17'1"
Area: 252 sq. ft
Counted as living area: Yes

Heated: Yes
Finished: Yes
Enclosed: Yes
Contiguous: Yes
Permitted: Yes
Wet space: No
Addition: No
Conversion: No

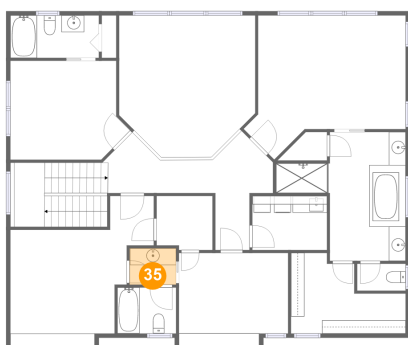
34 Floor 3 - Bath



Dimensions: 10'6" x 5'1"
Area: 53 sq. ft
Counted as living area: Yes

Heated: Yes
Finished: Yes
Enclosed: Yes
Contiguous: Yes
Permitted: Yes
Wet space: Yes
Addition: No
Conversion: No

35 Floor 3 - Bath



Dimensions: 5'6" x 4'4"
Area: 24 sq. ft
Counted as living area: Yes

Heated: Yes
Finished: Yes
Enclosed: Yes
Contiguous: Yes
Permitted: Yes
Wet space: Yes
Addition: No
Conversion: No