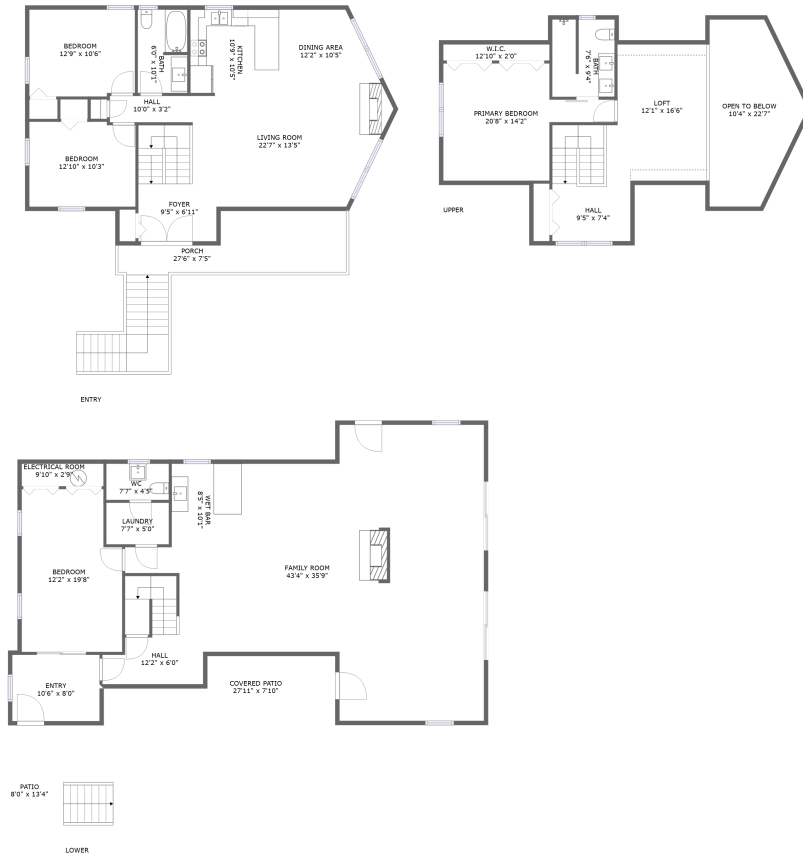


5632 Prices Turnpike & Cumberland Gap Road, Newport, Craig County, Virginia, United States,



Property Summary

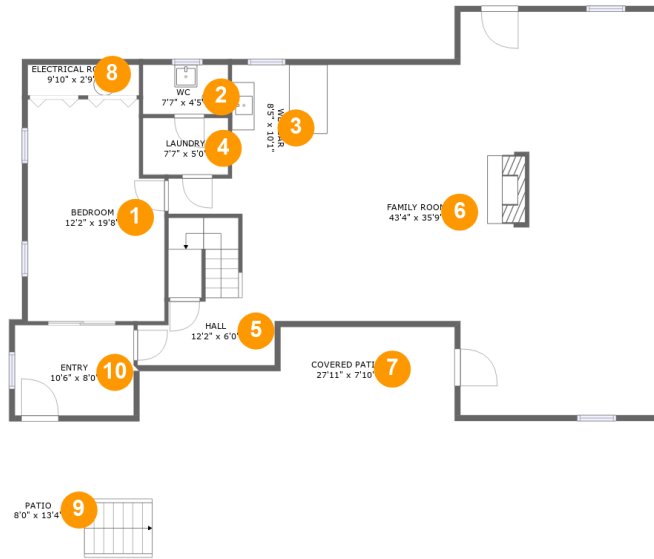
0 garages **4** bedrooms **2** bathrooms **1** half baths

3 floors

3,427 Gross Living Area sqft

4,313 total sqft

**5632 Prices Turnpike & Cumberland Gap Road,
Newport, Craig County, Virginia, United States,**



Room Dimensions

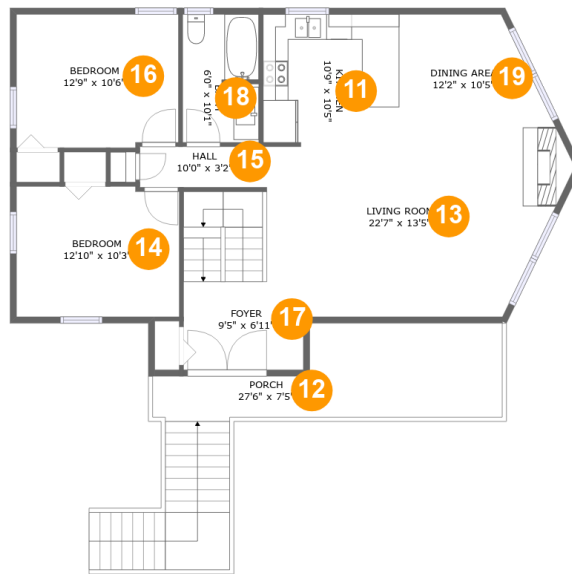
Floor 1

Total sqft: 2036

Living area: 1702

#	Room name	Dimensions	Area (sqft)	Counted as Living Area
1	Bedroom	12'2" x 19'8"	223 sq. ft	Yes
2	Wc	7'7" x 4'5"	33 sq. ft	Yes
3	Wet Bar	8'5" x 10'1"	85 sq. ft	Yes
4	Laundry	7'7" x 5'0"	38 sq. ft	Yes
5	Hall	12'2" x 6'0"	109 sq. ft	Yes
6	Family Room	43'4" x 35'9"	1002 sq. ft	Yes
7	Covered Patio	27'11" x 7'10"	171 sq. ft	No
8	Electrical Room	9'10" x 2'9"	27 sq. ft	No
9	Patio	8'0" x 13'4"	129 sq. ft	No
10	Entry	10'6" x 8'0"	85 sq. ft	Yes

5632 Prices Turnpike & Cumberland Gap Road, Newport, Craig County, Virginia, United States,



Room Dimensions

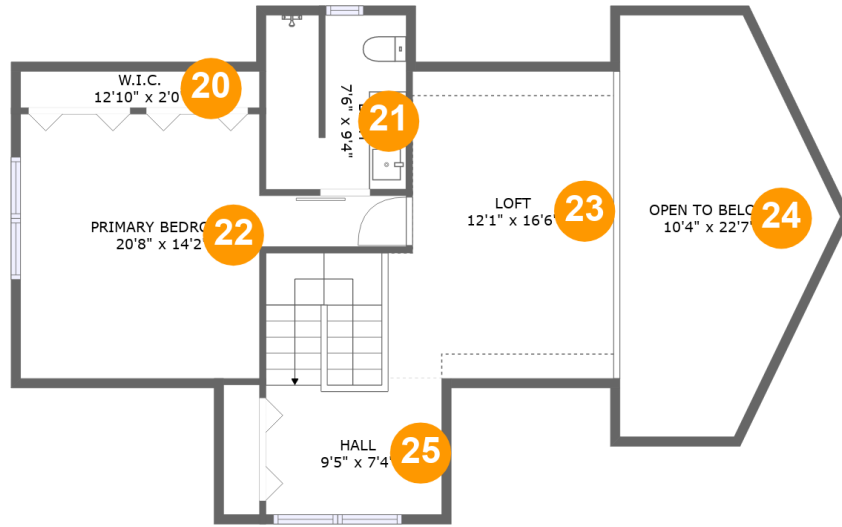
Floor 2

Total sqft: 1360

Living area: 1096

#	Room name	Dimensions	Area (sqft)	Counted as Living Area
11	Kitchen	10'9" x 10'5"	111 sq. ft	Yes
12	Porch	27'6" x 7'5"	264 sq. ft	No
13	Living Room	22'7" x 13'5"	283 sq. ft	Yes
14	Bedroom	12'10" x 10'3"	130 sq. ft	Yes
15	Hall	10'0" x 3'2"	32 sq. ft	Yes
16	Bedroom	12'9" x 10'6"	133 sq. ft	Yes
17	Foyer	9'5" x 6'11"	112 sq. ft	Yes
18	Bath	6'0" x 10'1"	60 sq. ft	Yes
19	Dining Area	12'2" x 10'5"	110 sq. ft	Yes

**5632 Prices Turnpike & Cumberland Gap Road,
Newport, Craig County, Virginia, United States,**



Room Dimensions

Floor 3

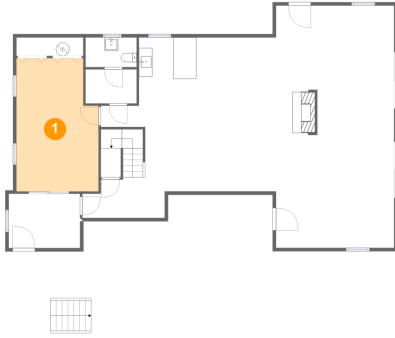
Total sqft: 917

Living area: 629

#	Room name	Dimensions	Area (sqft)	Counted as Living Area
20	W.i.c.	12'10" x 2'0"	25 sq. ft	Yes
21	Bath	7'6" x 9'4"	68 sq. ft	Yes
22	Primary Bedroom	20'8" x 14'2"	186 sq. ft	Yes
23	Loft	12'1" x 16'6"	167 sq. ft	Yes
24	Open To Below	10'4" x 22'7"	206 sq. ft	No
25	Hall	9'5" x 7'4"	111 sq. ft	Yes

5632 Prices Turnpike & Cumberland Gap Road, Newport, Craig County, Virginia, United States,

1 Floor 1 - Bedroom



Dimensions: 12'2" x 19'8"
Area: 223 sq. ft
Counted as Living Area:
Yes

Heated: Yes
Finished: Yes
Enclosed: Yes
Contiguous:
Yes
Permitted: Yes
Wet Space: No
Addition: No
Conversion: No

2 Floor 1 - Wc

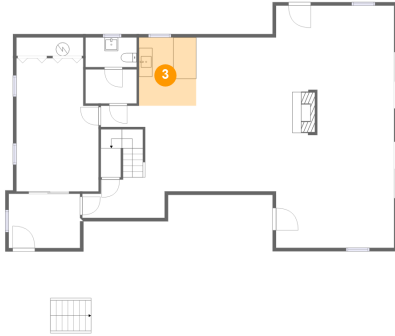


Dimensions: 7'7" x 4'5"
Area: 33 sq. ft
Counted as Living Area:
Yes

Heated: Yes
Finished: Yes
Enclosed: Yes
Contiguous:
Yes
Permitted: Yes
Wet Space: Yes
Addition: No
Conversion: No

5632 Prices Turnpike & Cumberland Gap Road, Newport, Craig County, Virginia, United States,

3 Floor 1 - Wet Bar



Dimensions: 8'5" x 10'1"
Area: 85 sq. ft
Counted as Living Area:
Yes

Heated: Yes
Finished: Yes
Enclosed: Yes
Contiguous:
Yes
Permitted: Yes
Wet Space: No
Addition: No
Conversion: No

4 Floor 1 - Laundry



Dimensions: 7'7" x 5'0"
Area: 38 sq. ft
Counted as Living Area:
Yes

Heated: Yes
Finished: Yes
Enclosed: Yes
Contiguous:
Yes
Permitted: Yes
Wet Space: No
Addition: No
Conversion: No

5 Floor 1 - Hall

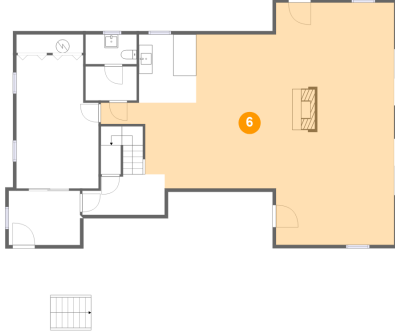


Dimensions: 12'2" x 6'0"
Area: 109 sq. ft
Counted as Living Area:
Yes

Heated: Yes
Finished: Yes
Enclosed: Yes
Contiguous:
Yes
Permitted: Yes
Wet Space: No
Addition: No
Conversion: No

5632 Prices Turnpike & Cumberland Gap Road, Newport, Craig County, Virginia, United States,

6 Floor 1 - Family Room



Dimensions: 43'4" x 35'9"
Area: 1002 sq. ft
Counted as Living Area:
Yes

Heated: Yes
Finished: Yes
Enclosed: Yes
Contiguous:
Yes
Permitted: Yes
Wet Space: No
Addition: No
Conversion: No

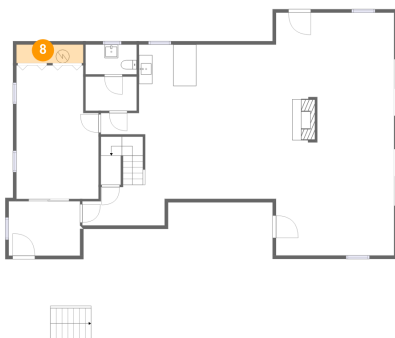
7 Floor 1 - Covered Patio



Dimensions: 27'11" x 7'10"
Area: 171 sq. ft
Counted as Living Area: No

Heated: No
Finished: Yes
Enclosed: No
Contiguous: Yes
Permitted: Yes
Wet Space: No
Addition: No
Conversion: No

8 Floor 1 - Electrical Room

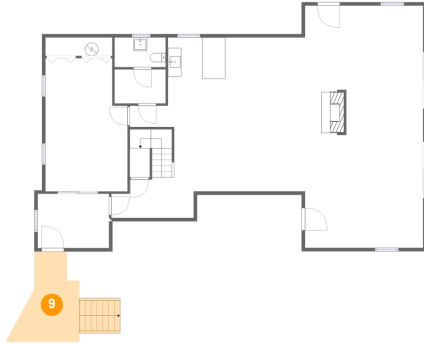


Dimensions: 9'10" x 2'9"
Area: 27 sq. ft
Counted as Living Area: No

Heated: No
Finished: No
Enclosed: Yes
Contiguous: Yes
Permitted: Yes
Wet Space: No
Addition: No
Conversion: No

5632 Prices Turnpike & Cumberland Gap Road, Newport, Craig County, Virginia, United States,

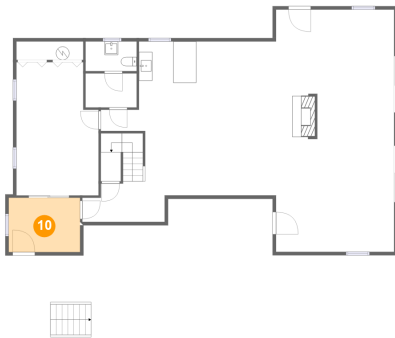
9 Floor 1 - Patio



Dimensions: 8'0" x 13'4"
Area: 129 sq. ft
Counted as Living Area: No

Heated: No
Finished: Yes
Enclosed: No
Contiguous: Yes
Permitted: Yes
Wet Space: No
Addition: No
Conversion: No

10 Floor 1 - Entry



Dimensions: 10'6" x 8'0"
Area: 85 sq. ft
Counted as Living Area: Yes

Heated: Yes
Finished: Yes
Enclosed: Yes
Contiguous: Yes
Permitted: Yes
Wet Space: No
Addition: No
Conversion: No

11 Floor 2 - Kitchen

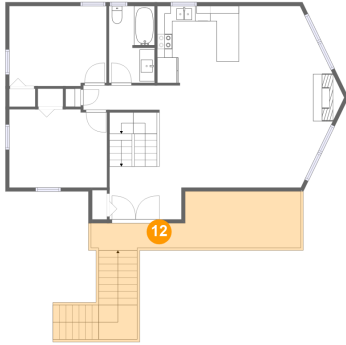


Dimensions: 10'9" x 10'5"
Area: 111 sq. ft
Counted as Living Area: Yes

Heated: Yes
Finished: Yes
Enclosed: Yes
Contiguous: Yes
Permitted: Yes
Wet Space: No
Addition: No
Conversion: No

5632 Prices Turnpike & Cumberland Gap Road, Newport, Craig County, Virginia, United States,

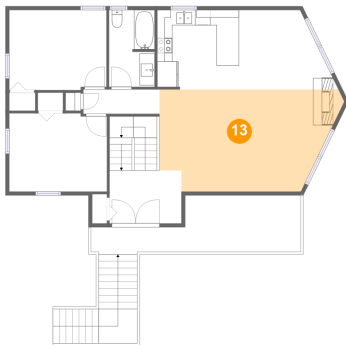
12 Floor 2 - Porch



Dimensions: 27'6" x 7'5"
Area: 264 sq. ft
Counted as Living Area: No

Heated: No
Finished: Yes
Enclosed: No
Contiguous: Yes
Permitted: Yes
Wet Space: No
Addition: No
Conversion: No

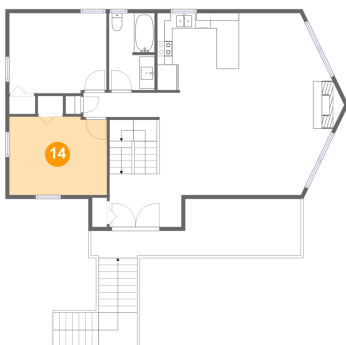
13 Floor 2 - Living Room



Dimensions: 22'7" x 13'5"
Area: 283 sq. ft
Counted as Living Area:
Yes

Heated: Yes
Finished: Yes
Enclosed: Yes
Contiguous:
Yes
Permitted: Yes
Wet Space: No
Addition: No
Conversion: No

14 Floor 2 - Bedroom

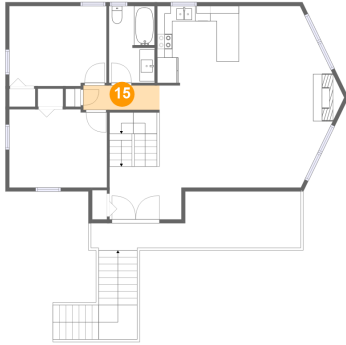


Dimensions: 12'10" x 10'3"
Area: 130 sq. ft
Counted as Living Area:
Yes

Heated: Yes
Finished: Yes
Enclosed: Yes
Contiguous:
Yes
Permitted: Yes
Wet Space: No
Addition: No
Conversion: No

5632 Prices Turnpike & Cumberland Gap Road, Newport, Craig County, Virginia, United States,

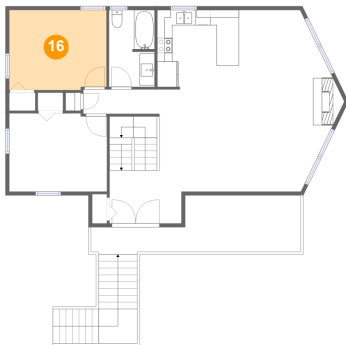
15 Floor 2 - Hall



Dimensions: 10'0" x 3'2"
Area: 32 sq. ft
Counted as Living Area:
Yes

Heated: Yes
Finished: Yes
Enclosed: Yes
Contiguous:
Yes
Permitted: Yes
Wet Space: No
Addition: No
Conversion: No

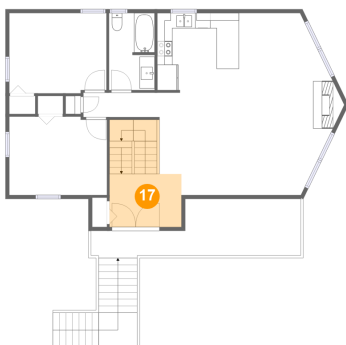
16 Floor 2 - Bedroom



Dimensions: 12'9" x 10'6"
Area: 133 sq. ft
Counted as Living Area:
Yes

Heated: Yes
Finished: Yes
Enclosed: Yes
Contiguous:
Yes
Permitted: Yes
Wet Space: No
Addition: No
Conversion: No

17 Floor 2 - Foyer

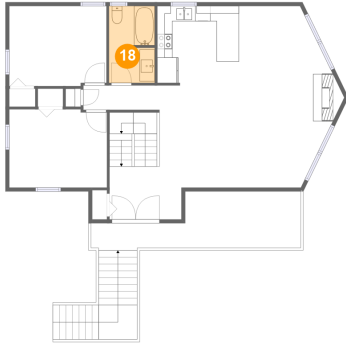


Dimensions: 9'5" x 6'11"
Area: 112 sq. ft
Counted as Living Area:
Yes

Heated: Yes
Finished: Yes
Enclosed: Yes
Contiguous:
Yes
Permitted: Yes
Wet Space: No
Addition: No
Conversion: No

5632 Prices Turnpike & Cumberland Gap Road, Newport, Craig County, Virginia, United States,

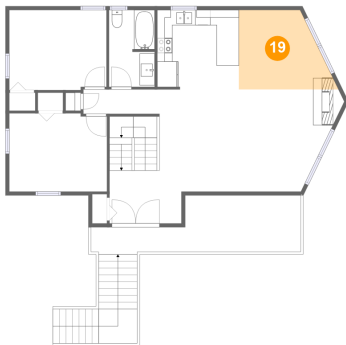
18 Floor 2 - Bath



Dimensions: 6'0" x 10'1"
Area: 60 sq. ft
Counted as Living Area:
Yes

Heated: Yes
Finished: Yes
Enclosed: Yes
Contiguous:
Yes
Permitted: Yes
Wet Space: Yes
Addition: No
Conversion: No

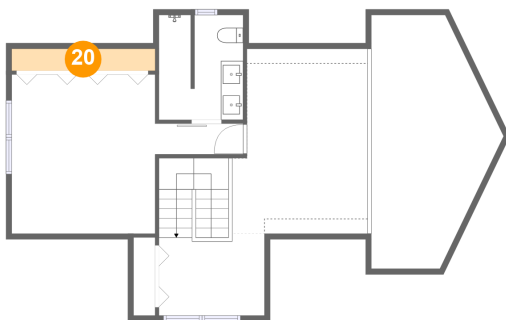
19 Floor 2 - Dining Area



Dimensions: 12'2" x 10'5"
Area: 110 sq. ft
Counted as Living Area:
Yes

Heated: Yes
Finished: Yes
Enclosed: Yes
Contiguous:
Yes
Permitted: Yes
Wet Space: No
Addition: No
Conversion: No

20 Floor 3 - W.i.c.

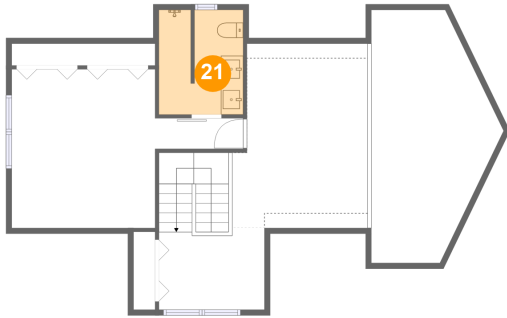


Dimensions: 12'10" x 2'0"
Area: 25 sq. ft
Counted as Living Area:
Yes

Heated: Yes
Finished: Yes
Enclosed: Yes
Contiguous:
Yes
Permitted: Yes
Wet Space: No
Addition: No
Conversion: No

5632 Prices Turnpike & Cumberland Gap Road, Newport, Craig County, Virginia, United States,

21 Floor 3 - Bath



Dimensions: 7'6" x 9'4"
Area: 68 sq. ft
Counted as Living Area:
Yes

Heated: Yes
Finished: Yes
Enclosed: Yes
Contiguous:
Yes
Permitted: Yes
Wet Space: Yes
Addition: No
Conversion: No

22 Floor 3 - Primary Bedroom



Dimensions: 20'8" x 14'2"
Area: 186 sq. ft
Counted as Living Area:
Yes

Heated: Yes
Finished: Yes
Enclosed: Yes
Contiguous:
Yes
Permitted: Yes
Wet Space: No
Addition: No
Conversion: No

23 Floor 3 - Loft



Dimensions: 12'1" x 16'6"
Area: 167 sq. ft
Counted as Living Area:
Yes

Heated: Yes
Finished: Yes
Enclosed: Yes
Contiguous:
Yes
Permitted: Yes
Wet Space: No
Addition: No
Conversion: No

5632 Prices Turnpike & Cumberland Gap Road, Newport, Craig County, Virginia, United States,

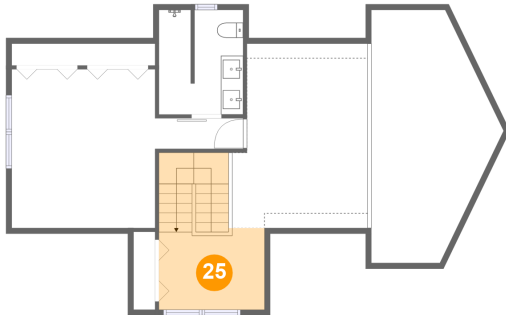
24 Floor 3 - Open To Below



Dimensions: 10'4" x 22'7"
Area: 206 sq. ft
Counted as Living Area: No

Heated: No
Finished: No
Enclosed: No
Contiguous: Yes
Permitted: No
Wet Space: No
Addition: No
Conversion: No

25 Floor 3 - Hall



Dimensions: 9'5" x 7'4"
Area: 111 sq. ft
Counted as Living Area:
Yes

Heated: Yes
Finished: Yes
Enclosed: Yes
Contiguous:
Yes
Permitted: Yes
Wet Space: No
Addition: No
Conversion: No