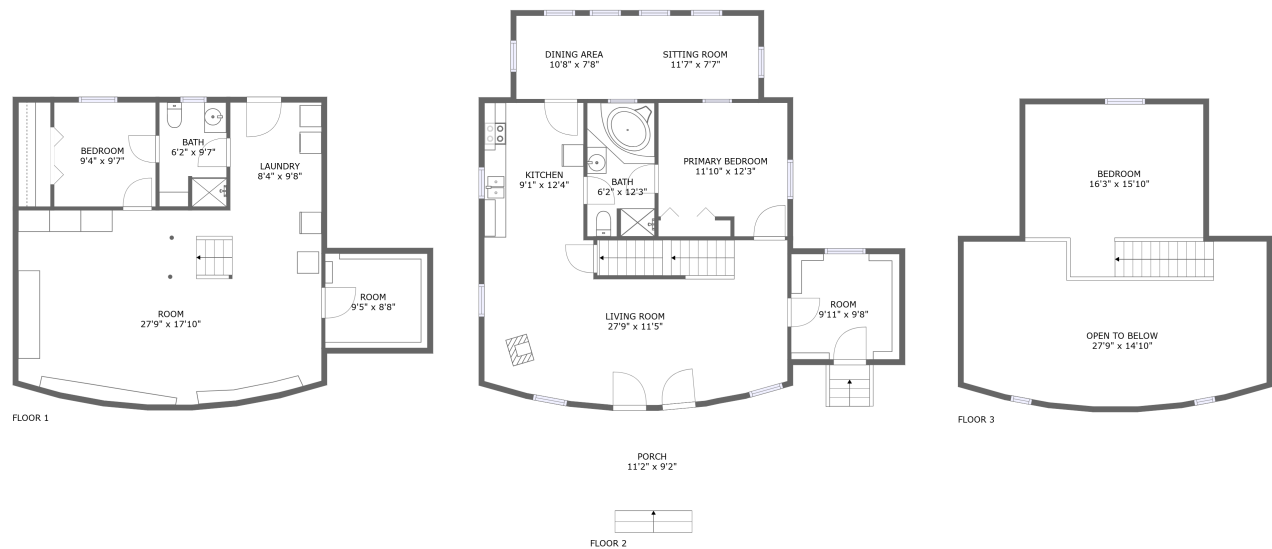




Home report


17 Mountainside Loop, Berkeley Springs, Morgan County, West Virginia, United States, 25411




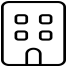
Property summary


**0** Garages


**3** Bedrooms

**2** Bathrooms

**0** Half baths

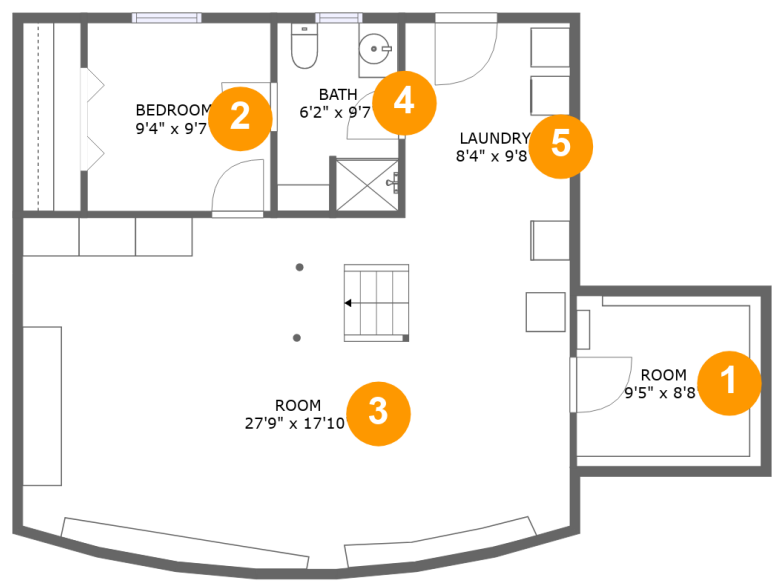
**3** Floors

**2,178** Gross living area sqft

**2,762** Total sqft

Home report

17 Mountainside Loop, Berkeley Springs, Morgan County, West Virginia, United States, 25411



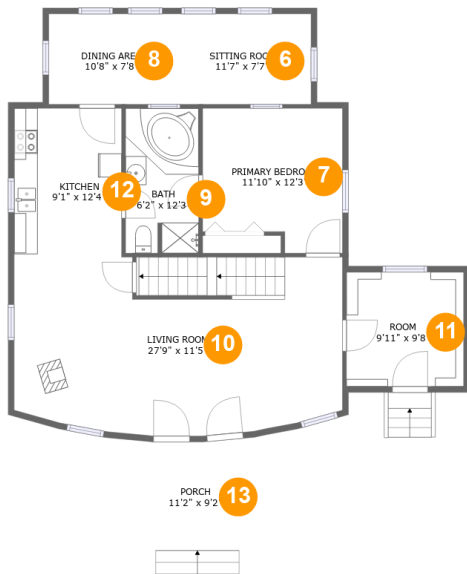
Room dimensions

Floor 1 Total sqft: 898 Living area: 803

#		Max Dimensions	sqft	Included
1	Room	9'5" x 8'8"	81 sq. ft	No
2	Bedroom	9'4" x 9'7"	89 sq. ft	Yes
3	Room	27'9" x 17'10"	477 sq. ft	Yes
4	Bath	6'2" x 9'7"	58 sq. ft	Yes
5	Laundry	8'4" x 9'8"	81 sq. ft	Yes

Home report

17 Mountainside Loop, Berkeley Springs, Morgan County, West Virginia, United States, 25411



Room dimensions

Floor 2

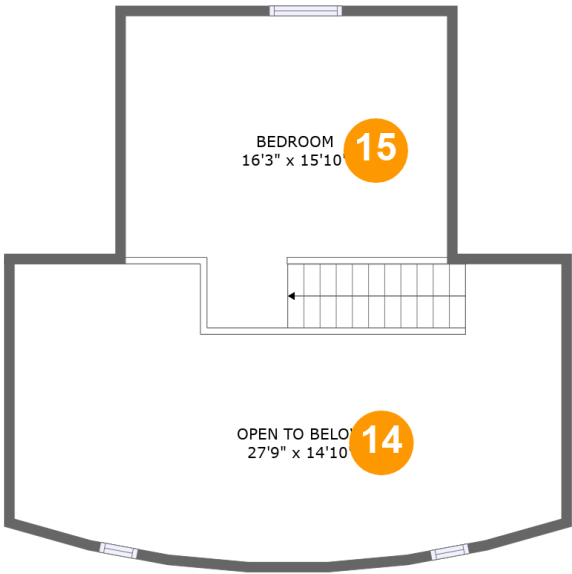
Total sqft: 1204

Living area: 1100

#		Max Dimensions	sqft	Included
6	Sitting Room	11'7" x 7'7"	89 sq. ft	Yes
7	Primary Bedroom	11'10" x 12'3"	132 sq. ft	Yes
8	Dining Area	10'8" x 7'8"	81 sq. ft	Yes
9	Bath	6'2" x 12'3"	75 sq. ft	Yes
10	Living Room	27'9" x 11'5"	398 sq. ft	Yes
11	Room	9'11" x 9'8"	96 sq. ft	Yes
12	Kitchen	9'1" x 12'4"	113 sq. ft	Yes
13	Porch	11'2" x 9'2"	104 sq. ft	No

Home report

17 Mountainside Loop, Berkeley Springs, Morgan County, West Virginia, United States, 25411



Room dimensions

Floor 3 Total sqft: 660 Living area: 275

#		Max Dimensions	sqft	Included
14	Open To Below	27'9" x 14'10"	352 sq. ft	No
15	Bedroom	16'3" x 15'10"	254 sq. ft	Yes

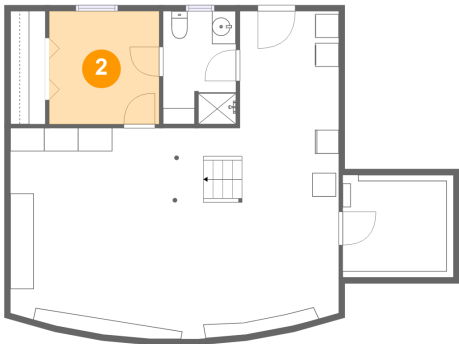
1 Floor 1 - Room



Max Dimensions: 9'5" x 8'8"
Calculated Area: 81 sq. ft
Included: No

Heated: Yes
Finished: No
Enclosed: Yes
Contiguous: Yes
Permitted: Yes
Wet space: No
Addition: No
Conversion: No

2 Floor 1 - Bedroom



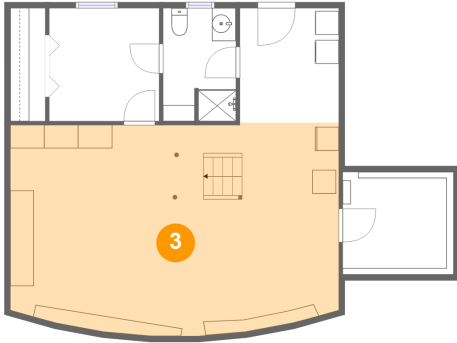
Max Dimensions: 9'4" x 9'7"
Calculated Area: 89 sq. ft
Included: Yes

Heated: Yes
Finished: Yes
Enclosed: Yes
Contiguous: Yes
Permitted: Yes
Wet space: No
Addition: No
Conversion: No

Home report

17 Mountainside Loop, Berkeley Springs, Morgan County, West Virginia, United States, 25411

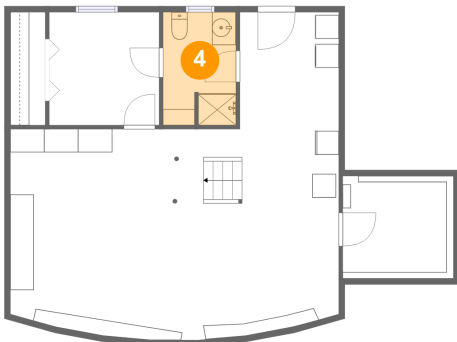
3 Floor 1 - Room



Max Dimensions: 27'9" x 17'10"
Calculated Area: 477 sq. ft
Included: Yes

Heated: Yes
Finished: Yes
Enclosed: Yes
Contiguous: Yes
Permitted: Yes
Wet space: No
Addition: No
Conversion: No

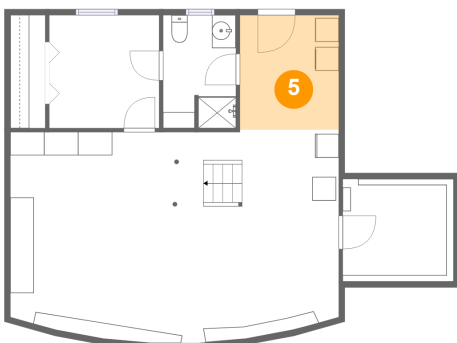
4 Floor 1 - Bath



Max Dimensions: 6'2" x 9'7"
Calculated Area: 58 sq. ft
Included: Yes

Heated: Yes
Finished: Yes
Enclosed: Yes
Contiguous: Yes
Permitted: Yes
Wet space: Yes
Addition: No
Conversion: No

5 Floor 1 - Laundry

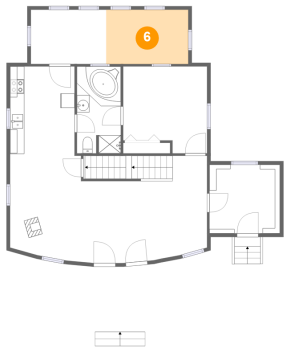


Max Dimensions: 8'4" x 9'8"
Calculated Area: 81 sq. ft
Included: Yes

Heated: Yes
Finished: Yes
Enclosed: Yes
Contiguous: Yes
Permitted: Yes
Wet space: No
Addition: No
Conversion: No

17 Mountainside Loop, Berkeley Springs, Morgan County, West Virginia, United States, 25411

6 Floor 2 - Sitting Room



Max Dimensions: 11'7" x 7'7"
Calculated Area: 89 sq. ft
Included: Yes

Heated: Yes
Finished: Yes
Enclosed: Yes
Contiguous: Yes
Permitted: Yes
Wet space: No
Addition: No
Conversion: No

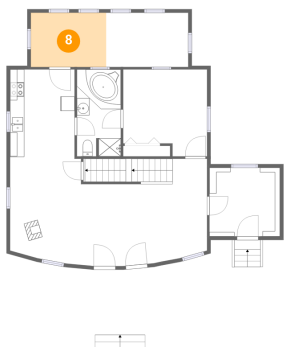
7 Floor 2 - Primary Bedroom



Max Dimensions: 11'10" x 12'3"
Calculated Area: 132 sq. ft
Included: Yes

Heated: Yes
Finished: Yes
Enclosed: Yes
Contiguous: Yes
Permitted: Yes
Wet space: No
Addition: No
Conversion: No

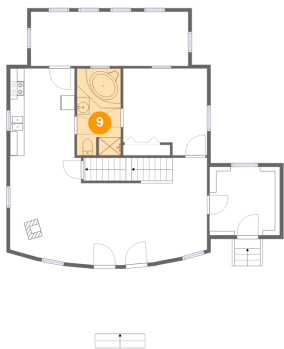
8 Floor 2 - Dining Area



Max Dimensions: 10'8" x 7'8"
Calculated Area: 81 sq. ft
Included: Yes

Heated: Yes
Finished: Yes
Enclosed: Yes
Contiguous: Yes
Permitted: Yes
Wet space: No
Addition: No
Conversion: No

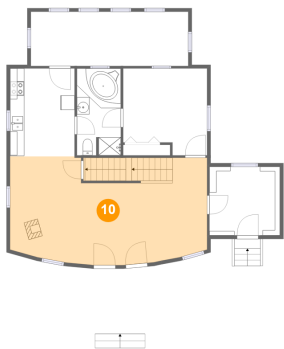
9 Floor 2 - Bath



Max Dimensions: 6'2" x 12'3"
Calculated Area: 75 sq. ft
Included: Yes

Heated: Yes
Finished: Yes
Enclosed: Yes
Contiguous: Yes
Permitted: Yes
Wet space: Yes
Addition: No
Conversion: No

10 Floor 2 - Living Room



Max Dimensions: 27'9" x 11'5"
Calculated Area: 398 sq. ft
Included: Yes

Heated: Yes
Finished: Yes
Enclosed: Yes
Contiguous: Yes
Permitted: Yes
Wet space: No
Addition: No
Conversion: No

11 Floor 2 - Room



Max Dimensions: 9'11" x 9'8"
Calculated Area: 96 sq. ft
Included: Yes

Heated: Yes
Finished: Yes
Enclosed: Yes
Contiguous: Yes
Permitted: Yes
Wet space: No
Addition: No
Conversion: No

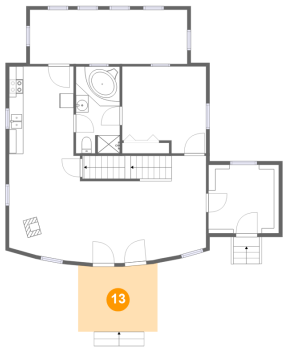
12 Floor 2 - Kitchen



Max Dimensions: 9'1" x 12'4"
Calculated Area: 113 sq. ft
Included: Yes

Heated: Yes
Finished: Yes
Enclosed: Yes
Contiguous: Yes
Permitted: Yes
Wet space: No
Addition: No
Conversion: No

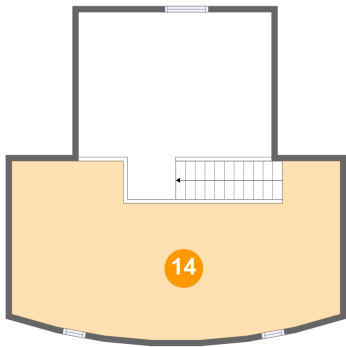
13 Floor 2 - Porch



Max Dimensions: 11'2" x 9'2"
Calculated Area: 104 sq. ft
Included: No

Heated: No
Finished: Yes
Enclosed: No
Contiguous: Yes
Permitted: Yes
Wet space: No
Addition: No
Conversion: No

14 Floor 3 - Open To Below



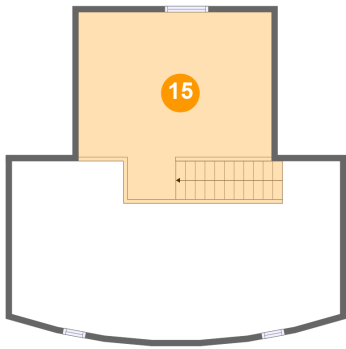
Max Dimensions: 27'9" x 14'10"
Calculated Area: 352 sq. ft
Included: No

Heated: No
Finished: No
Enclosed: No
Contiguous: Yes
Permitted: No
Wet space: No
Addition: No
Conversion: No

Home report

17 Mountainside Loop, Berkeley Springs, Morgan County, West Virginia, United States, 25411

15 Floor 3 - Bedroom



Max Dimensions: 16'3" x 15'10"
Calculated Area: 254 sq. ft
Included: Yes

Heated: Yes
Finished: Yes
Enclosed: Yes
Contiguous: Yes
Permitted: Yes
Wet space: No
Addition: No
Conversion: No