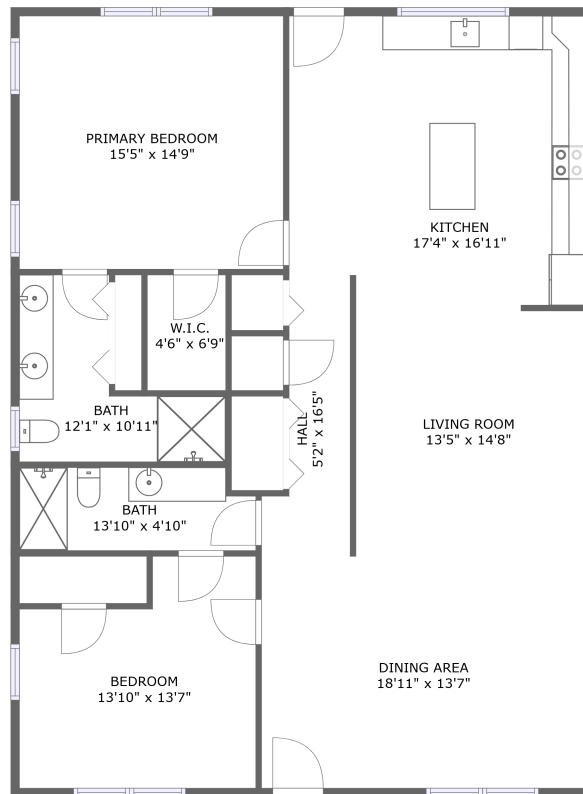



8018 County Rd 804, Burleson, TX, US



FLOOR 1

Property summary

 **0** Garages

 **2** Bedrooms

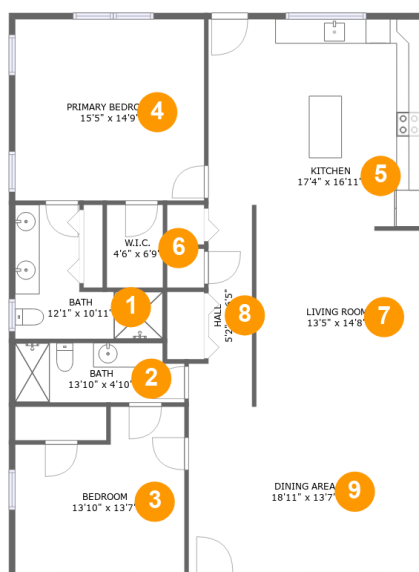
 **2** Bathrooms

 **0** Half baths

 **1** Floors

 **1,571** Gross living area sqft

 **1,571** Total sqft

8018 County Rd 804, Burleson, TX, US**Room dimensions****Floor 1****Total sqft: 1571 Living area: 1571**

#		Dimensions	sqft	Counted as living area
1	Bath	12'1" x 10'11"	83 sq. ft	Yes
2	Bath	13'10" x 4'10"	64 sq. ft	Yes
3	Bedroom	13'10" x 13'7"	163 sq. ft	Yes
4	Primary Bedroom	15'5" x 14'9"	228 sq. ft	Yes
5	Kitchen	17'4" x 16'11"	286 sq. ft	Yes
6	W.I.C.	4'6" x 6'9"	31 sq. ft	Yes
7	Living Room	13'5" x 14'8"	196 sq. ft	Yes
8	Hall	5'2" x 16'5"	64 sq. ft	Yes
9	Dining Area	18'11" x 13'7"	256 sq. ft	Yes

8018 County Rd 804, Burleson, TX, US

1 Floor 1 - Bath



Dimensions: 12'1" x 10'11"
Area: 83 sq. ft
Counted as living area: Yes

Heated: Yes
Finished: Yes
Enclosed: Yes
Contiguous: Yes
Permitted: Yes
Wet space: Yes
Addition: No
Conversion: No

2 Floor 1 - Bath

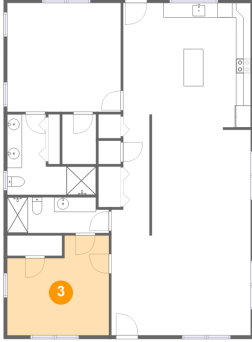


Dimensions: 13'10" x 4'10"
Area: 64 sq. ft
Counted as living area: Yes

Heated: Yes
Finished: Yes
Enclosed: Yes
Contiguous: Yes
Permitted: Yes
Wet space: Yes
Addition: No
Conversion: No

8018 County Rd 804, Burleson, TX, US

3 Floor 1 - Bedroom



Dimensions: 13'10" x 13'7"
Area: 163 sq. ft
Counted as living area: Yes

Heated: Yes
Finished: Yes
Enclosed: Yes
Contiguous: Yes
Permitted: Yes
Wet space: No
Addition: No
Conversion: No

4 Floor 1 - Primary Bedroom



Dimensions: 15'5" x 14'9"
Area: 228 sq. ft
Counted as living area: Yes

Heated: Yes
Finished: Yes
Enclosed: Yes
Contiguous: Yes
Permitted: Yes
Wet space: No
Addition: No
Conversion: No

5 Floor 1 - Kitchen

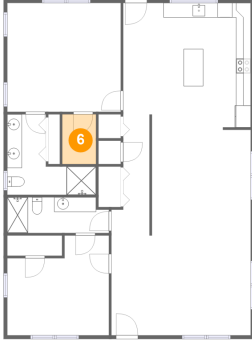


Dimensions: 17'4" x 16'11"
Area: 286 sq. ft
Counted as living area: Yes

Heated: Yes
Finished: Yes
Enclosed: Yes
Contiguous: Yes
Permitted: Yes
Wet space: No
Addition: No
Conversion: No

8018 County Rd 804, Burleson, TX, US

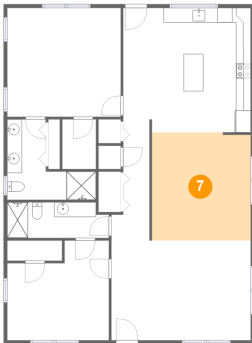
6 Floor 1 - W.I.C.



Dimensions: 4'6" x 6'9"
Area: 31 sq. ft
Counted as living area: Yes

Heated: Yes
Finished: Yes
Enclosed: Yes
Contiguous: Yes
Permitted: Yes
Wet space: No
Addition: No
Conversion: No

7 Floor 1 - Living Room



Dimensions: 13'5" x 14'8"
Area: 196 sq. ft
Counted as living area: Yes

Heated: Yes
Finished: Yes
Enclosed: Yes
Contiguous: Yes
Permitted: Yes
Wet space: No
Addition: No
Conversion: No

8 Floor 1 - Hall

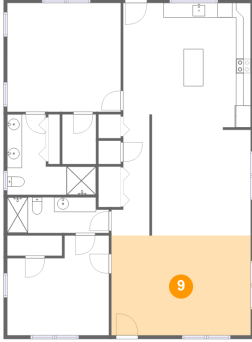


Dimensions: 5'2" x 16'5"
Area: 64 sq. ft
Counted as living area: Yes

Heated: Yes
Finished: Yes
Enclosed: Yes
Contiguous: Yes
Permitted: Yes
Wet space: No
Addition: No
Conversion: No

8018 County Rd 804, Burleson, TX, US

9 Floor 1 - Dining Area



Dimensions: 18'11" x 13'7"
Area: 256 sq. ft
Counted as living area: Yes

Heated: Yes
Finished: Yes
Enclosed: Yes
Contiguous: Yes
Permitted: Yes
Wet space: No
Addition: No
Conversion: No