


1014 Sevierville Rd, Maryville, TN, US



Property summary

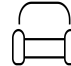
 **0** Garages

 **3** Bedrooms

 **3** Bathrooms

 **0** Half baths

 **2** Floors

 **2,785** Gross living area sqft

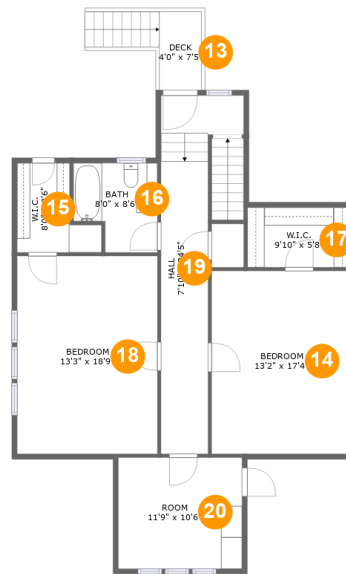
 **3,119** Total sqft

1014 Sevierville Rd, Maryville, TN, US**Room dimensions****Floor 1****Total sqft: 2007 Living area: 1703**

#		Dimensions	sqft	Counted as living area
1	Living Room	18'0" x 15'2"	282 sq. ft	Yes
2	Laundry	13'3" x 4'11"	65 sq. ft	Yes
3	Family Room	13'3" x 12'0"	160 sq. ft	Yes
4	Bath	7'10" x 6'5"	50 sq. ft	Yes
5	W.I.C.	8'11" x 6'4"	56 sq. ft	Yes
6	Primary Bath	13'3" x 17'5"	170 sq. ft	Yes
7	Hall	7'10" x 15'9"	86 sq. ft	Yes
8	Room	9'10" x 8'6"	75 sq. ft	Yes
9	Porch	31'11" x 10'3"	294 sq. ft	No
10	Primary Bedroom	13'3" x 14'4"	189 sq. ft	Yes
11	Dining Room	18'0" x 13'3"	239 sq. ft	Yes

1014 Sevierville Rd, Maryville, TN, US

#		Dimensions	sqft	Counted as living area
12	Kitchen	9'10" x 15'9"	155 sq. ft	Yes

1014 Sevierville Rd, Maryville, TN, US**Room dimensions**

Floor 2

Total sqft: 1112 Living area: 1082

#		Dimensions	sqft	Counted as living area
13	Deck	4'0" x 7'5"	30 sq. ft	No
14	Bedroom	13'2" x 17'4"	228 sq. ft	Yes
15	W.I.C.	8'0" x 8'6"	50 sq. ft	Yes
16	Bath	8'0" x 8'6"	58 sq. ft	Yes
17	W.I.C.	9'10" x 5'8"	56 sq. ft	Yes
18	Bedroom	13'3" x 18'9"	249 sq. ft	Yes
19	Hall	7'10" x 34'5"	165 sq. ft	Yes
20	Room	11'9" x 10'6"	123 sq. ft	Yes

1014 Sevierville Rd, Maryville, TN, US

1 Floor 1 - Living Room



Dimensions: 18'0" x 15'2"
Area: 282 sq. ft
Counted as living area: Yes

Heated: Yes
Finished: Yes
Enclosed: Yes
Contiguous: Yes
Permitted: Yes
Wet space: No
Addition: No
Conversion: No

2 Floor 1 - Laundry



Dimensions: 13'3" x 4'11"
Area: 65 sq. ft
Counted as living area: Yes

Heated: Yes
Finished: Yes
Enclosed: Yes
Contiguous: Yes
Permitted: Yes
Wet space: No
Addition: No
Conversion: No

1014 Sevierville Rd, Maryville, TN, US

3 Floor 1 - Family Room



Dimensions: 13'3" x 12'0"
Area: 160 sq. ft
Counted as living area: Yes

Heated: Yes
Finished: Yes
Enclosed: Yes
Contiguous: Yes
Permitted: Yes
Wet space: No
Addition: No
Conversion: No

4 Floor 1 - Bath



Dimensions: 7'10" x 6'5"
Area: 50 sq. ft
Counted as living area: Yes

Heated: Yes
Finished: Yes
Enclosed: Yes
Contiguous: Yes
Permitted: Yes
Wet space: Yes
Addition: No
Conversion: No

5 Floor 1 - W.I.C.



Dimensions: 8'11" x 6'4"
Area: 56 sq. ft
Counted as living area: Yes

Heated: Yes
Finished: Yes
Enclosed: Yes
Contiguous: Yes
Permitted: Yes
Wet space: No
Addition: No
Conversion: No

1014 Sevierville Rd, Maryville, TN, US**6 Floor 1 - Primary Bath**

Dimensions: 13'3" x 17'5"
Area: 170 sq. ft
Counted as living area: Yes

Heated: Yes
Finished: Yes
Enclosed: Yes
Contiguous: Yes
Permitted: Yes
Wet space: Yes
Addition: No
Conversion: No

7 Floor 1 - Hall

Dimensions: 7'10" x 15'9"
Area: 86 sq. ft
Counted as living area: Yes

Heated: Yes
Finished: Yes
Enclosed: Yes
Contiguous: Yes
Permitted: Yes
Wet space: No
Addition: No
Conversion: No

8 Floor 1 - Room

Dimensions: 9'10" x 8'6"
Area: 75 sq. ft
Counted as living area: Yes

Heated: Yes
Finished: Yes
Enclosed: Yes
Contiguous: Yes
Permitted: Yes
Wet space: No
Addition: No
Conversion: No

1014 Sevierville Rd, Maryville, TN, US

9 Floor 1 - Porch



Dimensions: 31'11" x 10'3"
Area: 294 sq. ft
Counted as living area: No

Heated: No
Finished: Yes
Enclosed: No
Contiguous: Yes
Permitted: Yes
Wet space: No
Addition: No
Conversion: No

10 Floor 1 - Primary Bedroom



Dimensions: 13'3" x 14'4"
Area: 189 sq. ft
Counted as living area: Yes

Heated: Yes
Finished: Yes
Enclosed: Yes
Contiguous: Yes
Permitted: Yes
Wet space: No
Addition: No
Conversion: No

11 Floor 1 - Dining Room



Dimensions: 18'0" x 13'3"
Area: 239 sq. ft
Counted as living area: Yes

Heated: Yes
Finished: Yes
Enclosed: Yes
Contiguous: Yes
Permitted: Yes
Wet space: No
Addition: No
Conversion: No

1014 Sevierville Rd, Maryville, TN, US

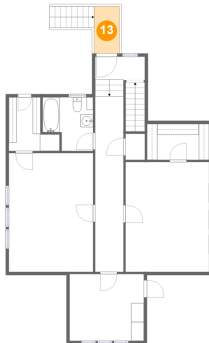
12 Floor 1 - Kitchen



Dimensions: 9'10" x 15'9"
Area: 155 sq. ft
Counted as living area: Yes

Heated: Yes
Finished: Yes
Enclosed: Yes
Contiguous: Yes
Permitted: Yes
Wet space: No
Addition: No
Conversion: No

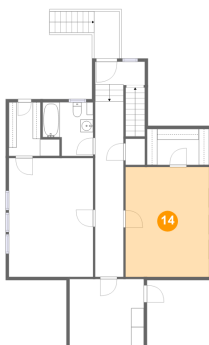
13 Floor 2 - Deck



Dimensions: 4'0" x 7'5"
Area: 30 sq. ft
Counted as living area: No

Heated: No
Finished: Yes
Enclosed: No
Contiguous: Yes
Permitted: Yes
Wet space: No
Addition: No
Conversion: No

14 Floor 2 - Bedroom

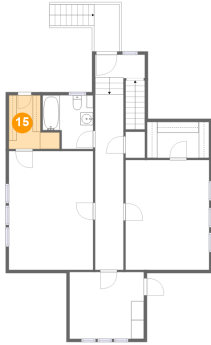


Dimensions: 13'2" x 17'4"
Area: 228 sq. ft
Counted as living area: Yes

Heated: Yes
Finished: Yes
Enclosed: Yes
Contiguous: Yes
Permitted: Yes
Wet space: No
Addition: No
Conversion: No

1014 Sevierville Rd, Maryville, TN, US

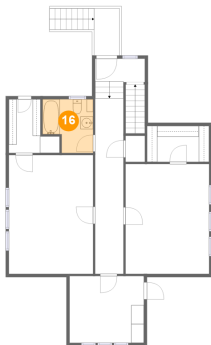
15 Floor 2 - W.I.C.



Dimensions: 8'0" x 8'6"
Area: 50 sq. ft
Counted as living area: Yes

Heated: Yes
Finished: Yes
Enclosed: Yes
Contiguous: Yes
Permitted: Yes
Wet space: No
Addition: No
Conversion: No

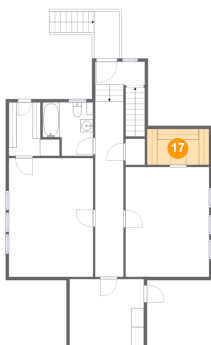
16 Floor 2 - Bath



Dimensions: 8'0" x 8'6"
Area: 58 sq. ft
Counted as living area: Yes

Heated: Yes
Finished: Yes
Enclosed: Yes
Contiguous: Yes
Permitted: Yes
Wet space: Yes
Addition: No
Conversion: No

17 Floor 2 - W.I.C.

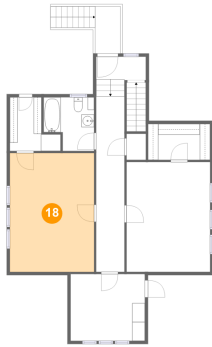


Dimensions: 9'10" x 5'8"
Area: 56 sq. ft
Counted as living area: Yes

Heated: Yes
Finished: Yes
Enclosed: Yes
Contiguous: Yes
Permitted: Yes
Wet space: No
Addition: No
Conversion: No

1014 Sevierville Rd, Maryville, TN, US

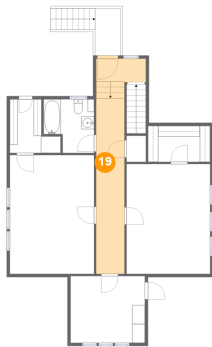
18 Floor 2 - Bedroom



Dimensions: 13'3" x 18'9"
Area: 249 sq. ft
Counted as living area: Yes

Heated: Yes
Finished: Yes
Enclosed: Yes
Contiguous: Yes
Permitted: Yes
Wet space: No
Addition: No
Conversion: No

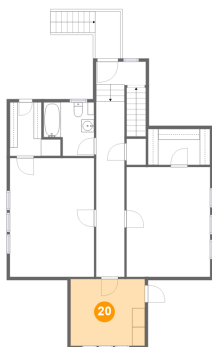
19 Floor 2 - Hall



Dimensions: 7'10" x 34'5"
Area: 165 sq. ft
Counted as living area: Yes

Heated: Yes
Finished: Yes
Enclosed: Yes
Contiguous: Yes
Permitted: Yes
Wet space: No
Addition: No
Conversion: No

20 Floor 2 - Room



Dimensions: 11'9" x 10'6"
Area: 123 sq. ft
Counted as living area: Yes

Heated: Yes
Finished: Yes
Enclosed: Yes
Contiguous: Yes
Permitted: Yes
Wet space: No
Addition: No
Conversion: No